



159 E WALTON PLACE #28A NEAR NORTH SIDE

159 E WALTON PLACE #28A · NEAR NORTH SIDE



@properties | CHRISTIE'S INTERNATIONAL REAL ESTATE

LUXURY PORTFOLIO INTERNATIONAL



CAROLYN LANDIS BROKER

773.704.0644 mobile  
630.530.0900 office  
clandis@atproperties.com  
www.landischicago.com



159 E WALTON PLACE #28A · NEAR NORTH SIDE





# 159 E WALTON PLACE #28A

## ROOM DIMENSIONS

Private Elevator Foyer .....	25'x10'
Rotunda Entry .....	10'x10'
Family Room .....	17'x18'
Living Room .....	16'x22'
Bar .....	15'x8'
Office .....	19'x13'
Dining Room .....	17'x16'
Kitchen .....	16'x16'
Butler's Pantry .....	18'x9'
Bedroom 3 .....	16'x11'
Gallery .....	12'x7'
Laundry Room .....	10'x9'
Primary Bedroom .....	18'x14'
Bedroom 2 .....	18'x14'
Wine Cellar .....	6'x7'

## FEATURES

Located on the 28th floor of the iconic Palmolive Building, this extraordinary full-floor residence offers an unmatched blend of historic grandeur, refined craftsmanship, and breathtaking panoramic views of Lake Michigan, the Magnificent Mile, and Navy Pier.

- 5,400 square feet, 3-bedroom, 2.5-bath home decorated by acclaimed designer Paula Berg is a true masterpiece of luxury living.
- Private Elevator Foyer wrapped in Romanoff rolled wood wall coverings
- Dramatic rotunda adorned with a hand-applied silverleaf ceiling, Venetian plaster niches, and stunning marble, limestone, and onyx flooring.
- Spectacular lounge and bar with Lalique glass panels, granite countertops, a Herbeau polished nickel sink, Franke faucet, refrigerator, and ice maker.
- DeGuillio Kitchen featuring a custom marble sink, Subzero refrigerator with butternut wood doors and a full butler's pantry.
- Primary Suite with a Venetian plaster ceiling, two walk-in closets, and an ensuite bathroom with custom burl wood and onyx cabinets, a Seura mirror with TV, a spectacular stand-alone Kohler tub and limestone shower.
- Soaring ceilings, rich hardwood floors, classic Art Deco moldings, custom Evan Lewis-designed fireplaces, custom millwork, 600-bottle EuroCave wine coolers, a complete total home control system with Lutron lighting, motorized shades, distributed audio/video, and much more.



**CAROLYN LANDIS** BROKER

773.704.0644 mobile  
630.530.0900 office

clandis@atproperties.com  
www.landischicago.com































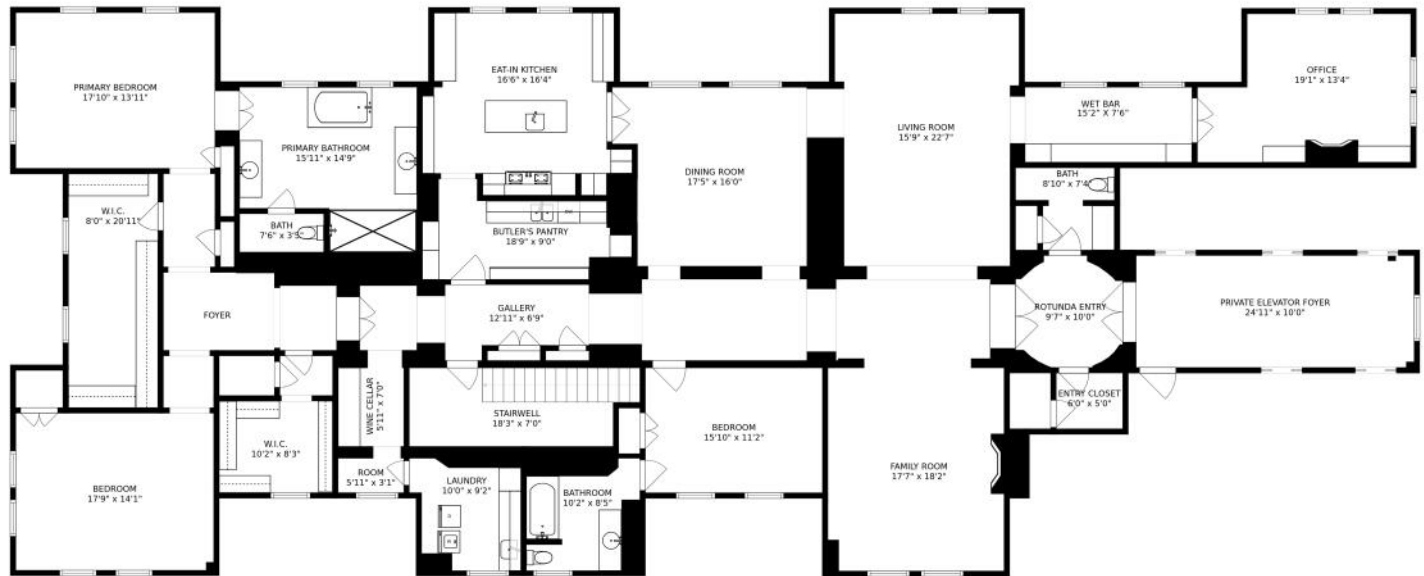




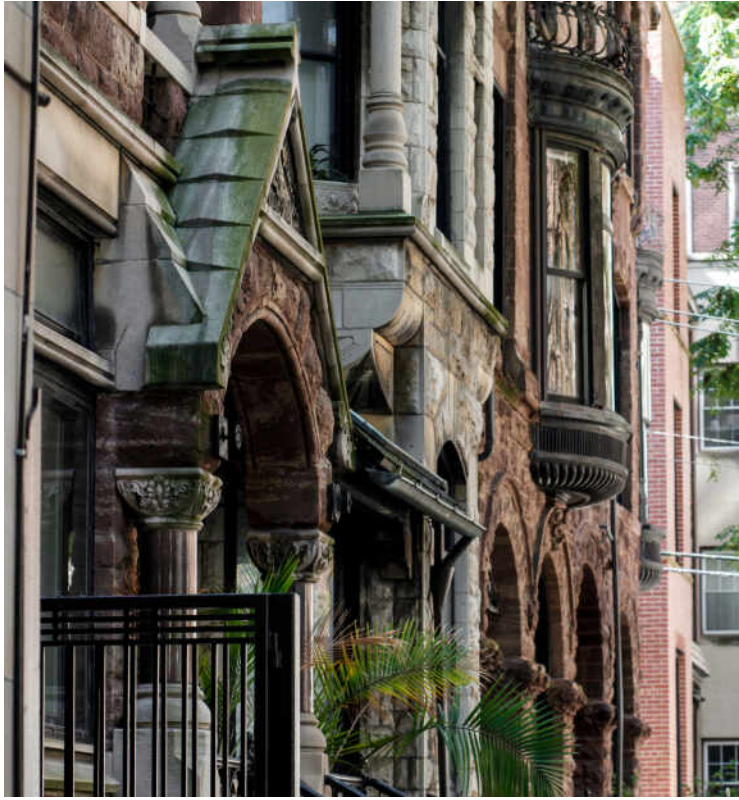








SIZES AND DIMENSIONS ARE APPROXIMATE, ACTUAL MAY VARY.



## WHEN YOU REACH THE **GOLD COAST**, YOU KNOW YOU HAVE ARRIVED.

*Locals love the neighborhood's mix of vintage and modern architecture, world-class shopping and dining, and easy access to Chicago's lakefront parks and beaches.*

In Chicago's ultimate luxury neighborhood, you'll find lively beaches, internationally renowned boutiques, incredible cuisine, and vibrant nightlife, as well as beautiful parks and attractions.

Residents live among the best experiences the city has to offer. A day in the Gold Coast might include a venture down Michigan Avenue, a day at the beach, and shopping along Oak Street, followed by dinner at an award-winning restaurant.

From the stately mansions on Astor Street to the magnificent high-rises overlooking the lake, the Gold Coast also features a surprising variety of housing choices. In addition to the historic apartment buildings that line Lake Shore Drive, there are walk-ups, townhomes, and a number of contemporary high-rises with all the modern amenities.

For those heading to work downtown, their “commute” is about as convenient as it gets when it comes to city living.

@properties® | CHRISTIE'S  
INTERNATIONAL REAL ESTATE

*Leading* REAL ESTATE  
COMPANIES  
OF THE WORLD®

LP  
LUXURY  
PORTFOLIO  
INTERNATIONAL

