

1600 S INDIANA AVENUE #702
PRAIRIE DISTRICT

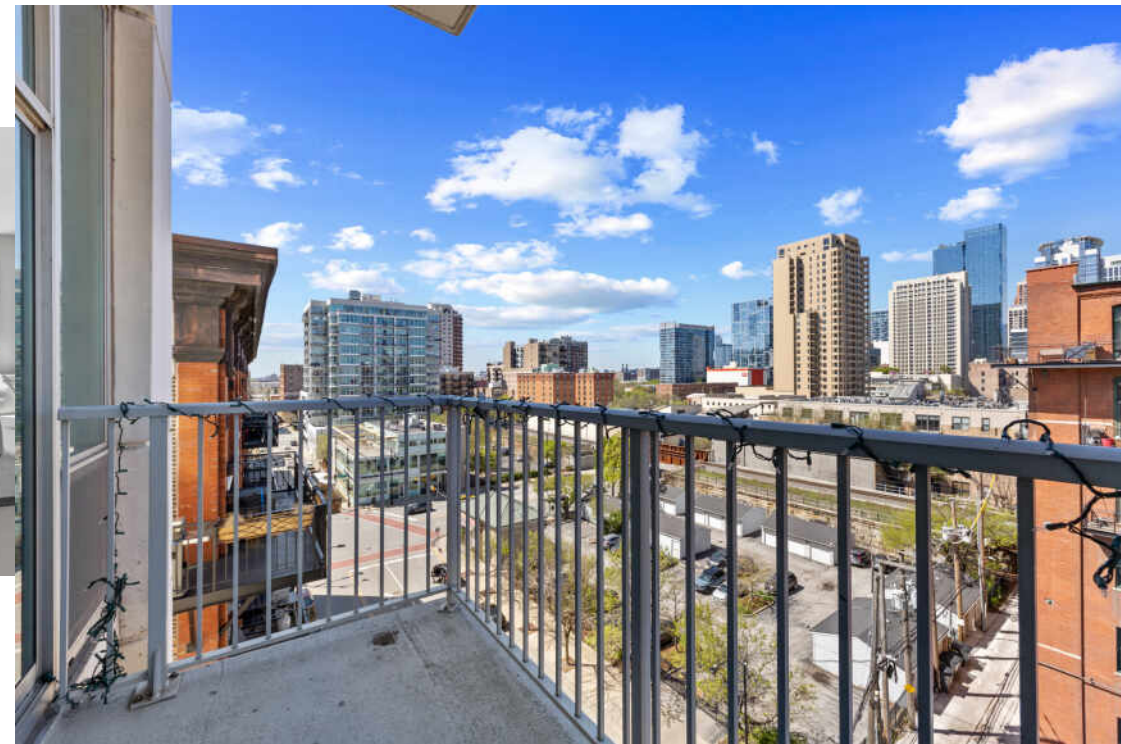
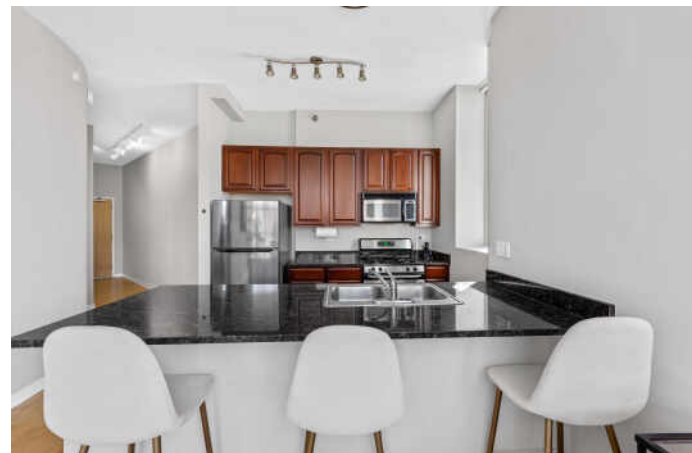


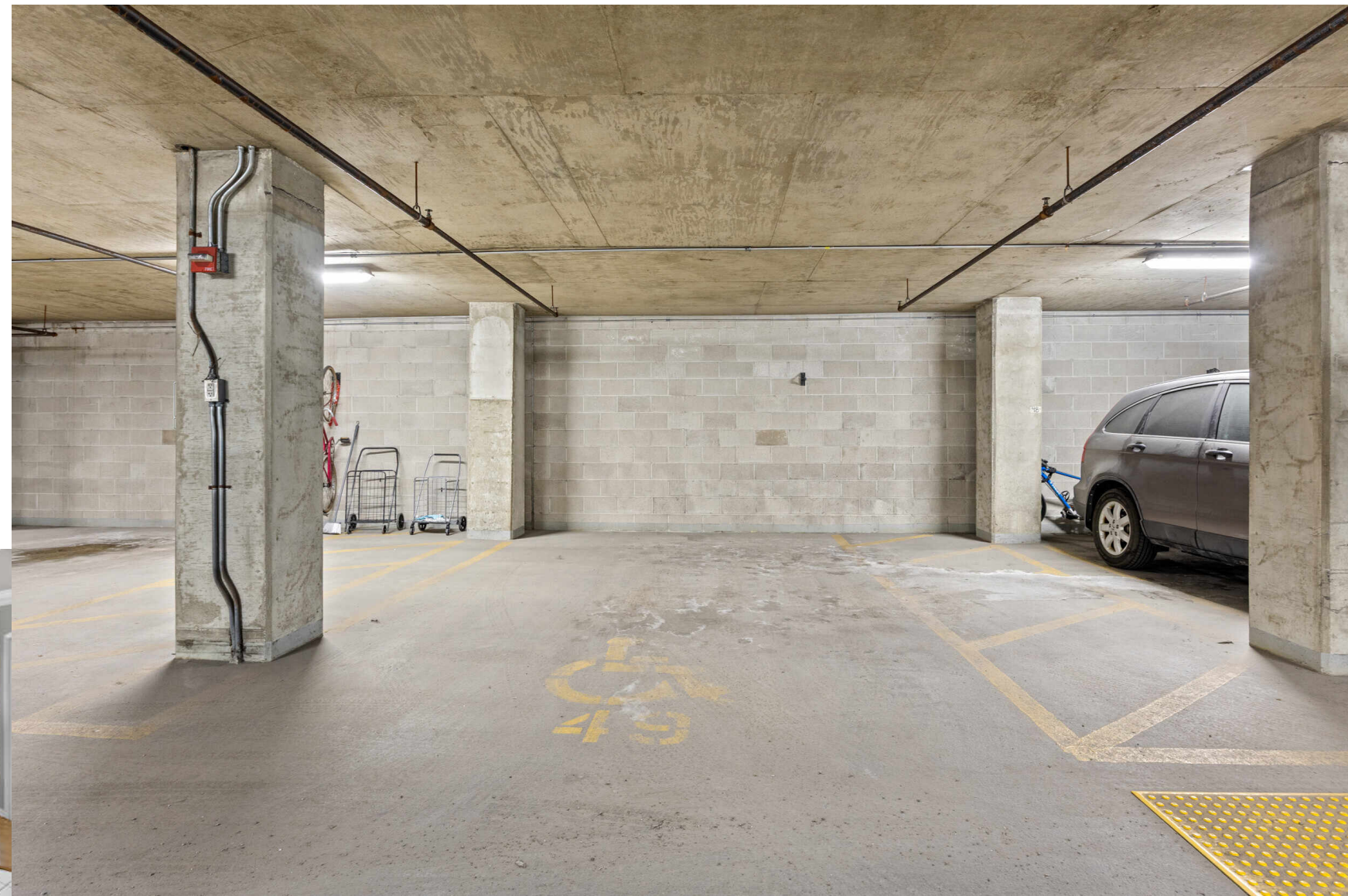


BRIGHT SOUTH LOOP CONDO WITH HUGE GARAGE PARKING SPACE

NW Bright corner condo features floor to ceiling windows, balcony, & huge parking spot. 1 bed 1 bath condo in lovely Museum Park South Loop. Open floor plan, breakfast bar, room for dining, good closet space, front entry space, in unit laundry, central air & heat. Corner unit with extra windows in kitchen & living room. New fridge 2025. Fitness center and indoor deeded parking included. Taxes do not include homeowner exemption. Super cute and super bright. Close to expressway, Michigan Ave, grocery and medical district.

1 BEDROOM
1 BATH
TAXES: \$5,658
ASSESSMENTS: \$675 / MONTH

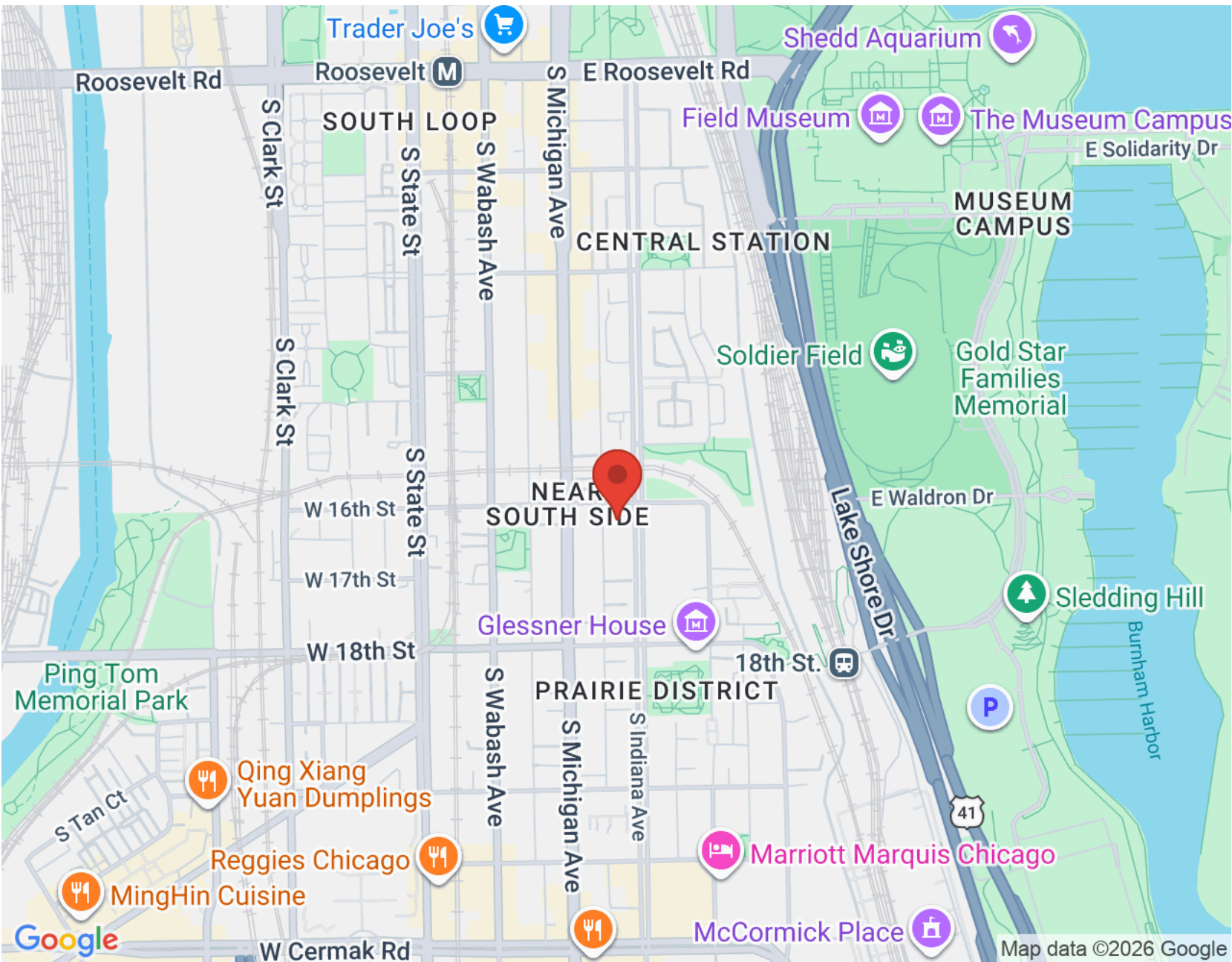






Floor Plan Created By Cubicasa App. Measurements Deemed Highly Reliable But Not Guaranteed.





NOTES _____



META ROSE TORCHIA

REAL ESTATE BROKER

312.882.6796

METAROSE@ATPROPERTIES.COM

TOP PRODUCER 5-10M

META ROSE TORCHIA

