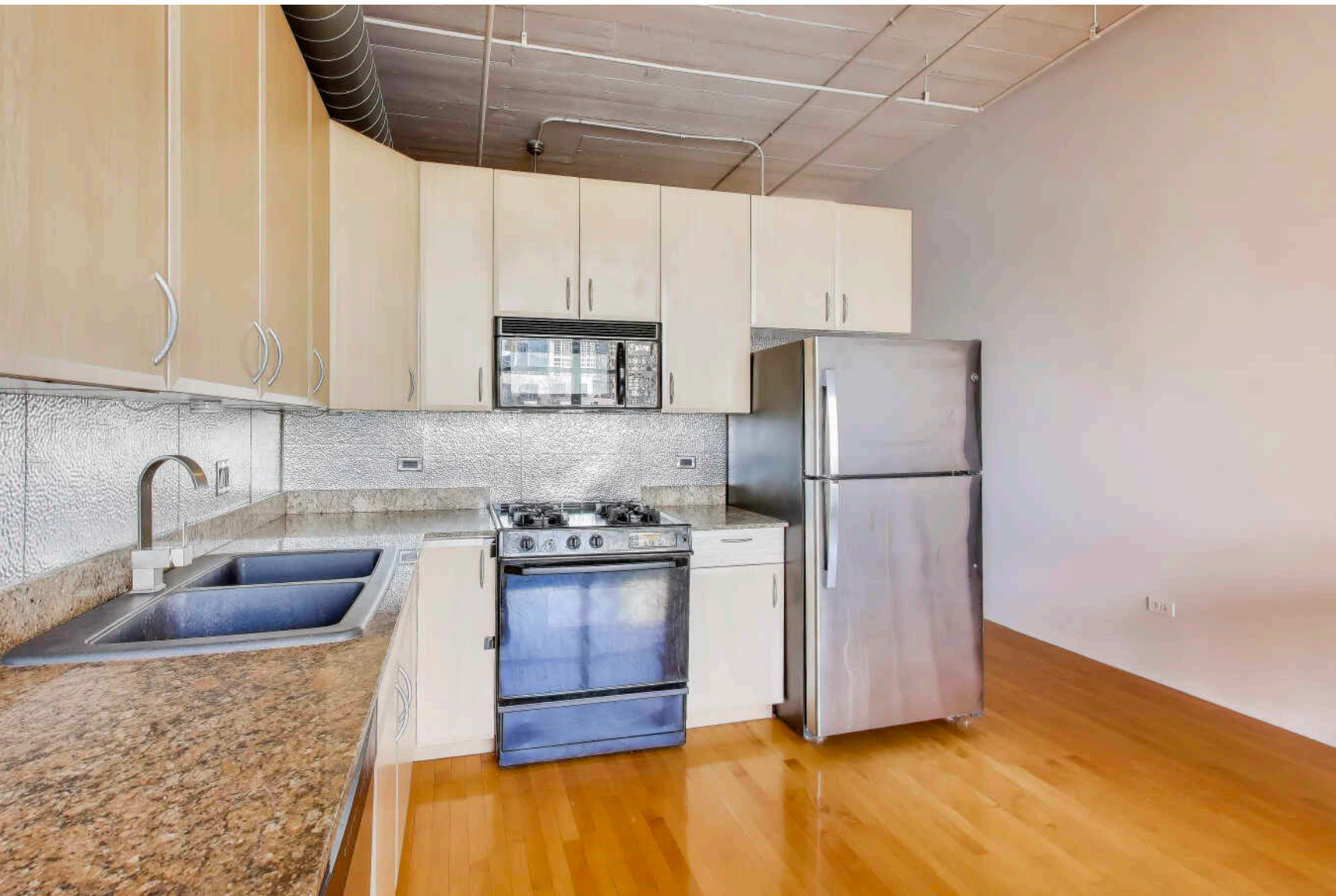


1601 S MICHIGAN AVENUE #304
SOUTH LOOP

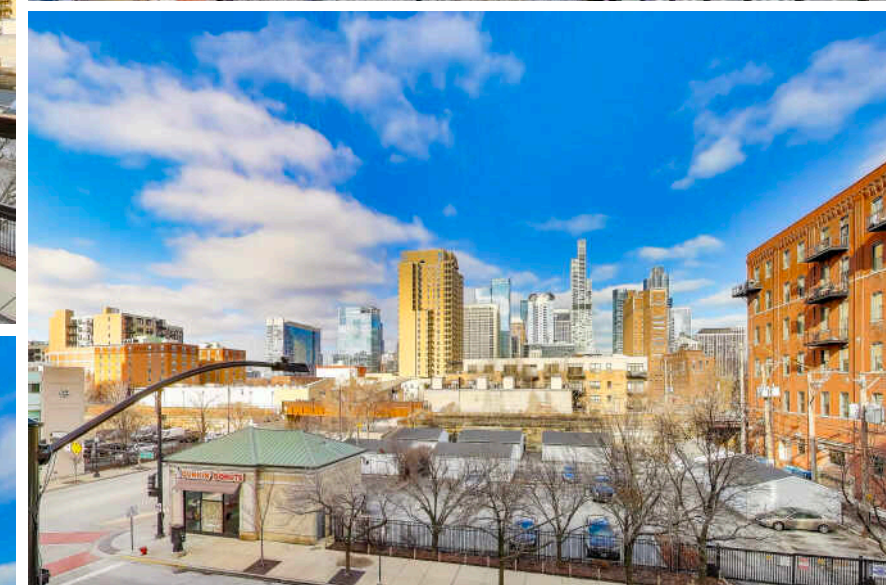
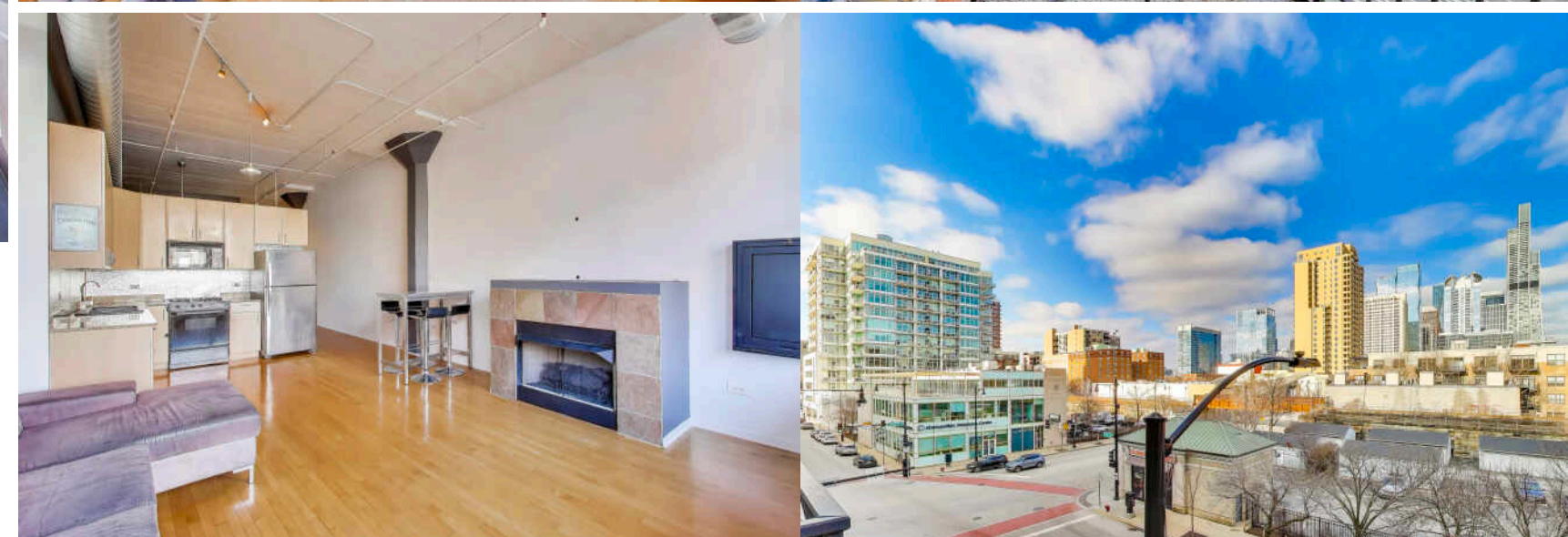
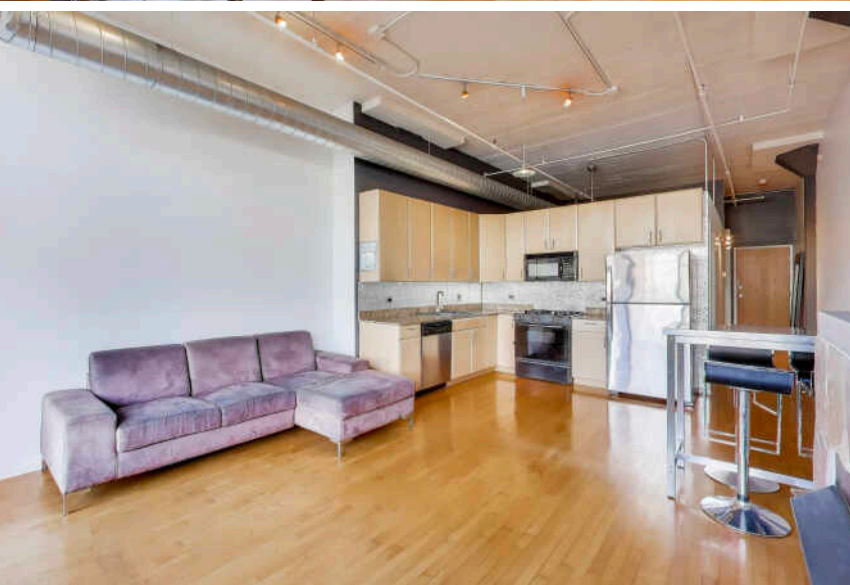
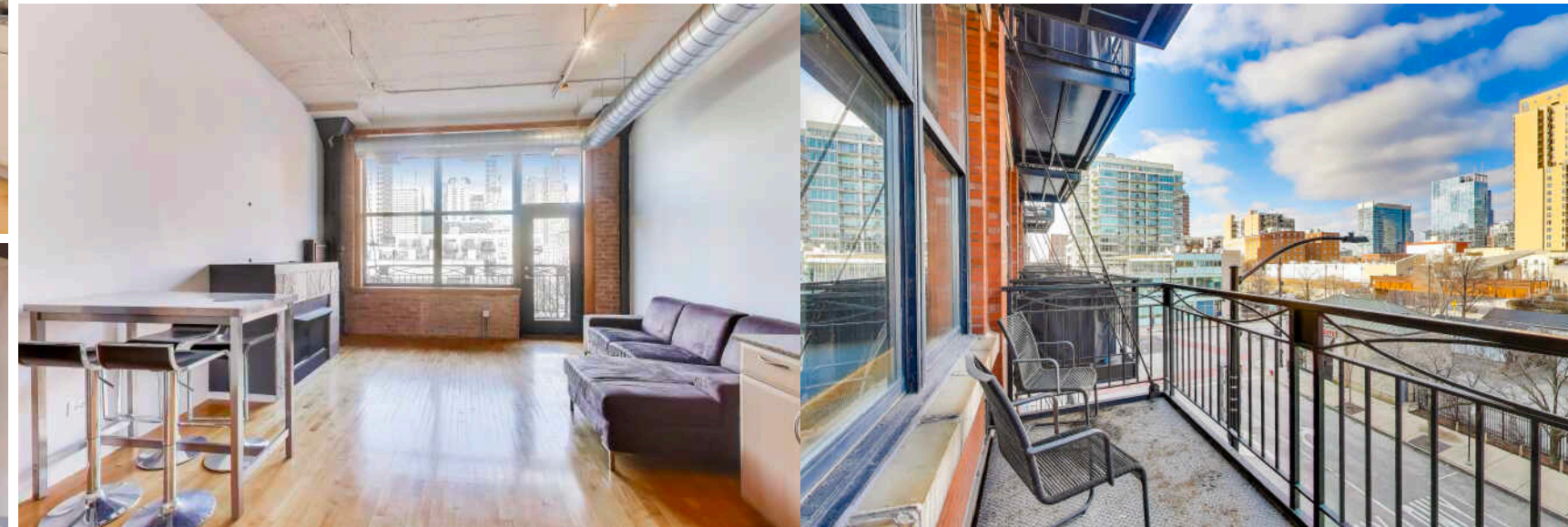
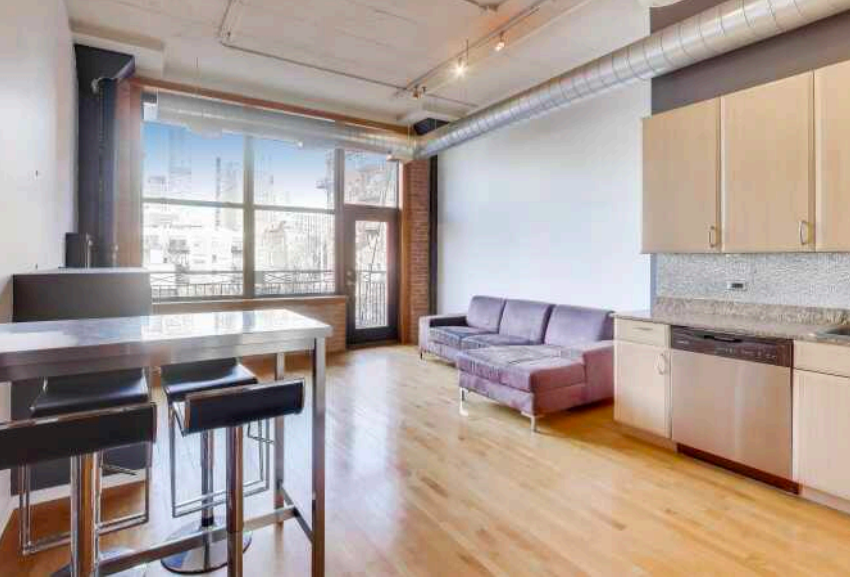


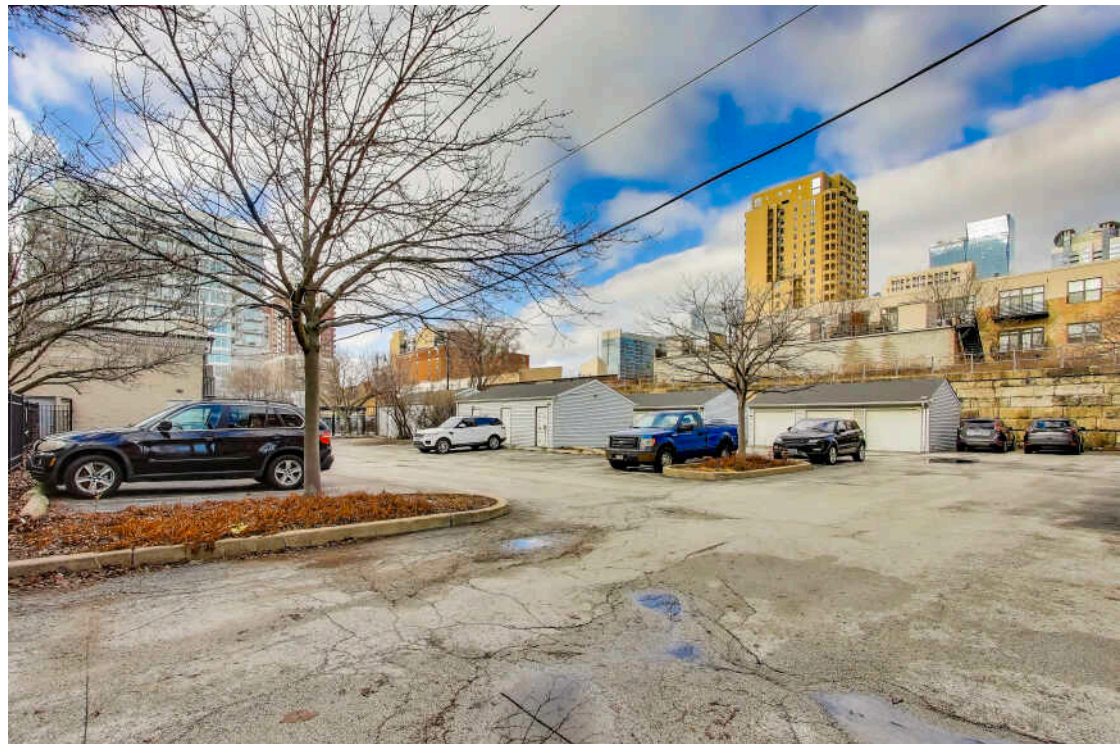


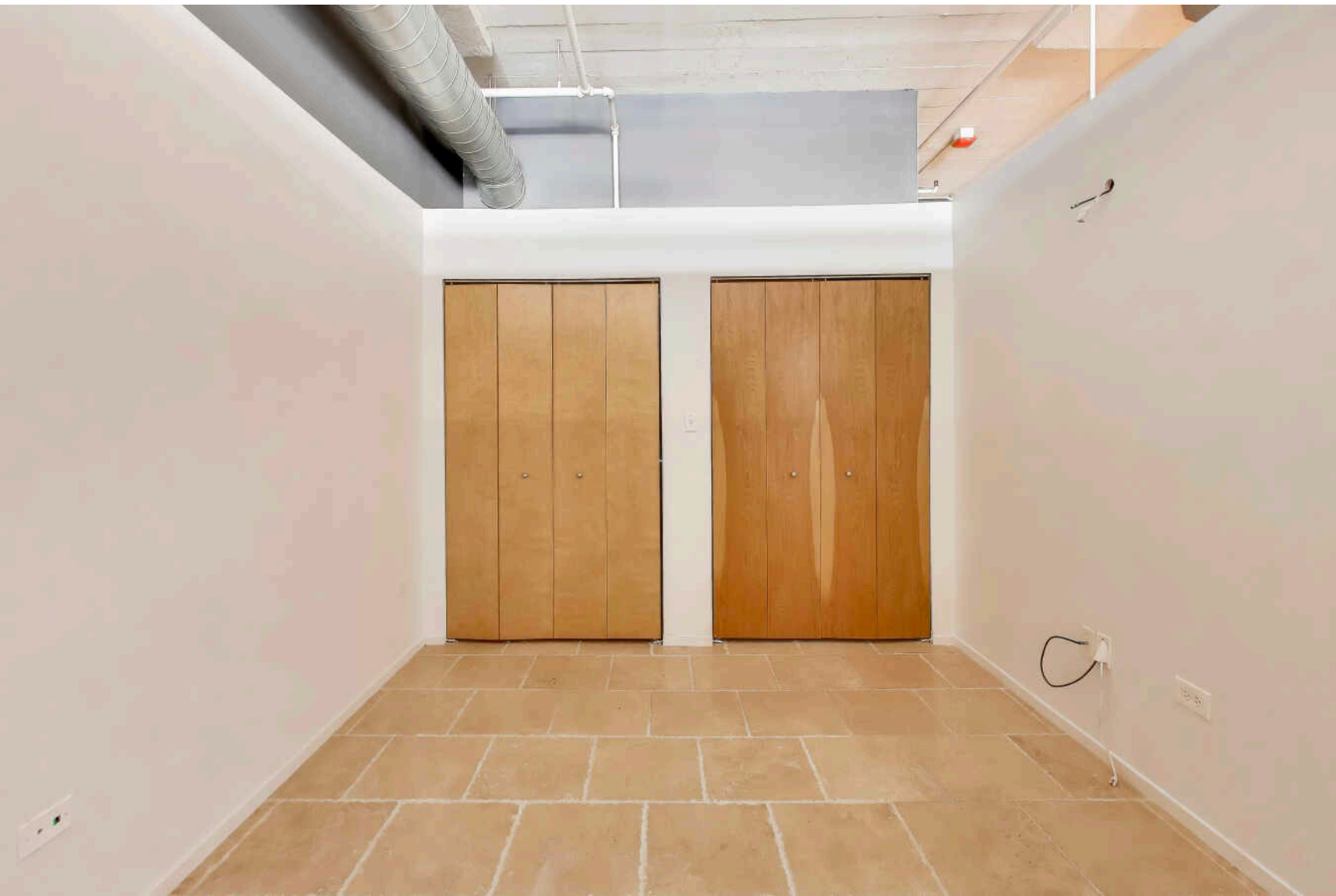
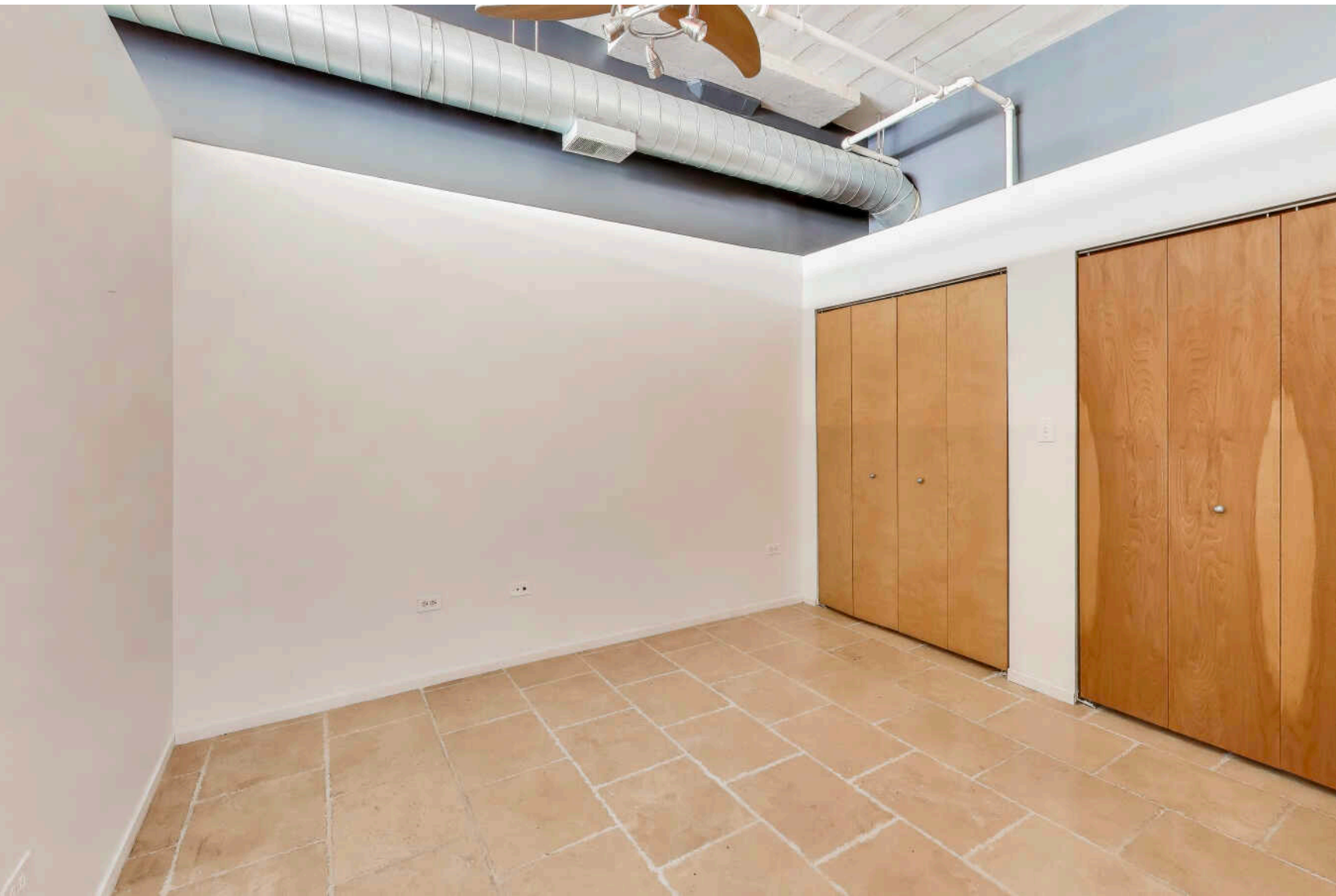
1 BEDROOM
1 BATH

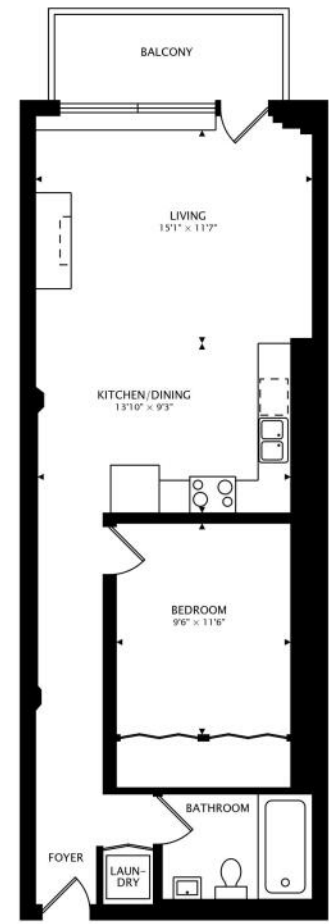
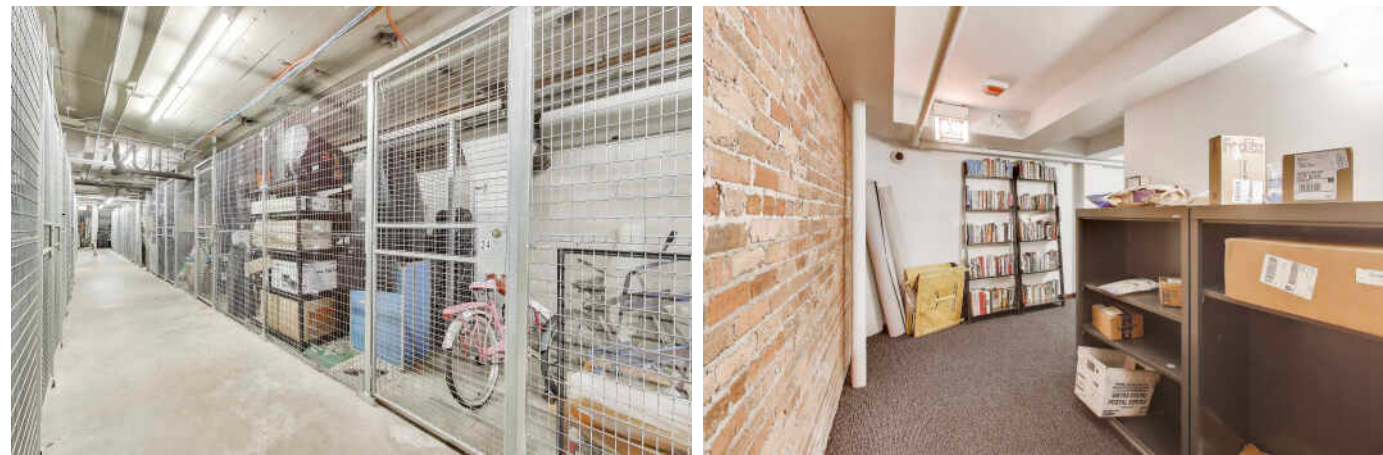
SOUTH LOOP FABULOUS

Welcome to this beautifully light-filled one-bedroom, one-bath residence located in the vibrant heart of the South Loop. Oversized windows frame city street views and bathe the open-concept living space in abundant natural light. The spacious living area is anchored by a cozy fireplace, creating a warm and inviting ambiance. The thoughtfully designed kitchen features an open concept overlooking your living area and balcony, ideal for entertaining. An in-unit washer and dryer add everyday convenience. Step onto your private balcony, perfect for relaxing or hosting guests during the warmer months. A basement storage locker (24) and a deeded outdoor parking space are included in the price-an exceptional and rare offering in this neighborhood. The building also provides guest parking for added ease. Enjoy a truly walkable lifestyle with close proximity to the lakefront, museums, Grant Park, campus areas, acclaimed dining, grocery stores, Dunkin' is across the street, walking distance to Huge dog park and steps away from public transportation.









711 sq ft + 58 sq ft BALCONY



CHARACTERIZED BY TOWERING HIGH RISES AND HISTORIC POCKETS THAT REFLECT THE AREA'S STORIED PAST, THE **SOUTH LOOP** IS A DISTINCTIVE CHICAGO NEIGHBORHOOD.

Chicago's original Gold Coast in the late 19th century, the South Loop was once home to the likes of Marshall Field, George Pullman, and Philip Armour. Today the vibrant neighborhood is known for its access to the lakefront, shops, restaurants, parks, Museum Campus, and The Loop.

The South Loop is comprised of several historic areas including Printer's Row, which features a number of buildings that have been converted into residential lofts, along with Motor Row District and Prairie Avenue District. Meanwhile, several apartment and condominium buildings are under construction, bringing thousands of new residences to the neighborhood.

The South Loop's housing boom has brought with it an influx of retailers along with eateries and nightlife on South Michigan Avenue. The Roosevelt Collection is a popular destination featuring a movie theater and an assortment of retailers.

Museum Campus is the cultural hub of the South Loop featuring attractions including the Field Museum, Shedd Aquarium, Adler Planetarium, and Soldier Field. Residents also enjoy being in close proximity to Northerly Island and public transportation including the CTA's Roosevelt station.



TATIANA REA

(773) 320-5555

TATIANA@ATPROPERTIES.COM

TATIANAREA.COM

