

1605 W LEXINGTON DRIVE
ARLINGTON HEIGHTS



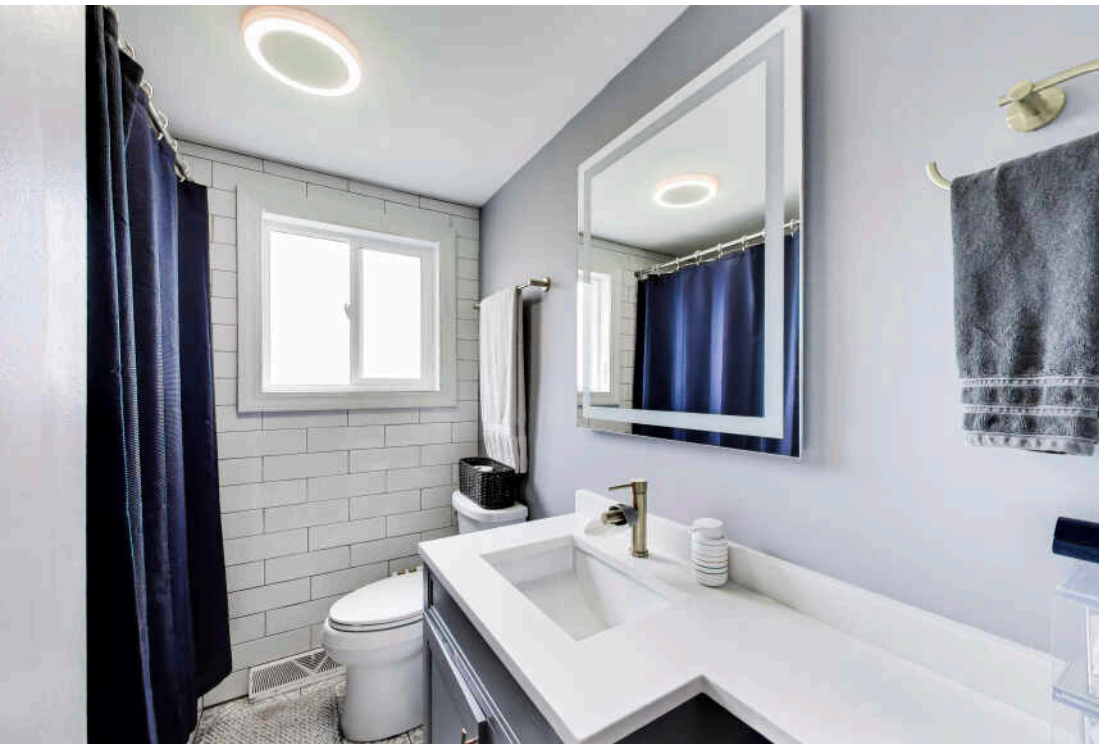
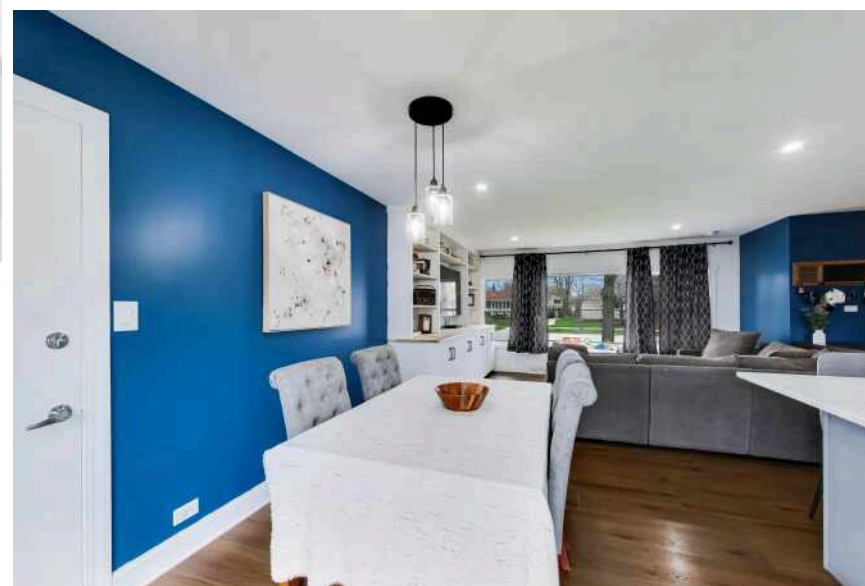
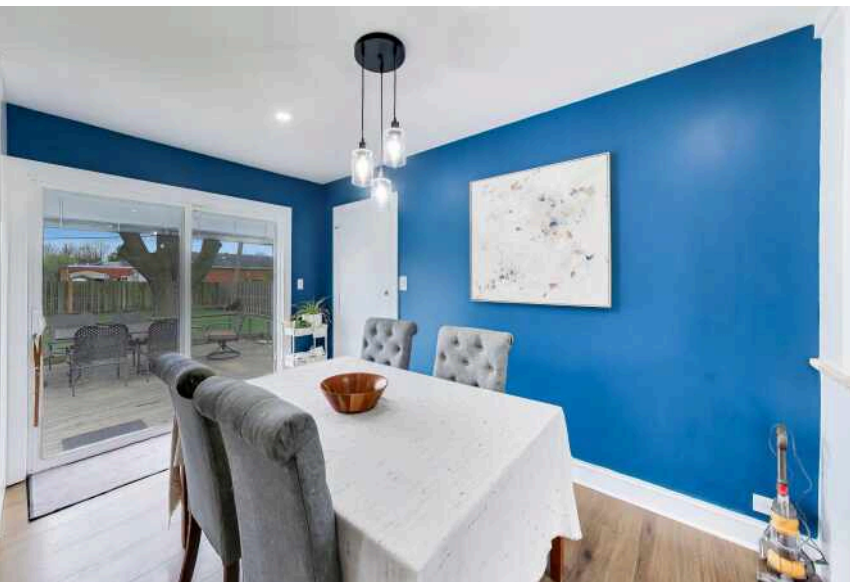
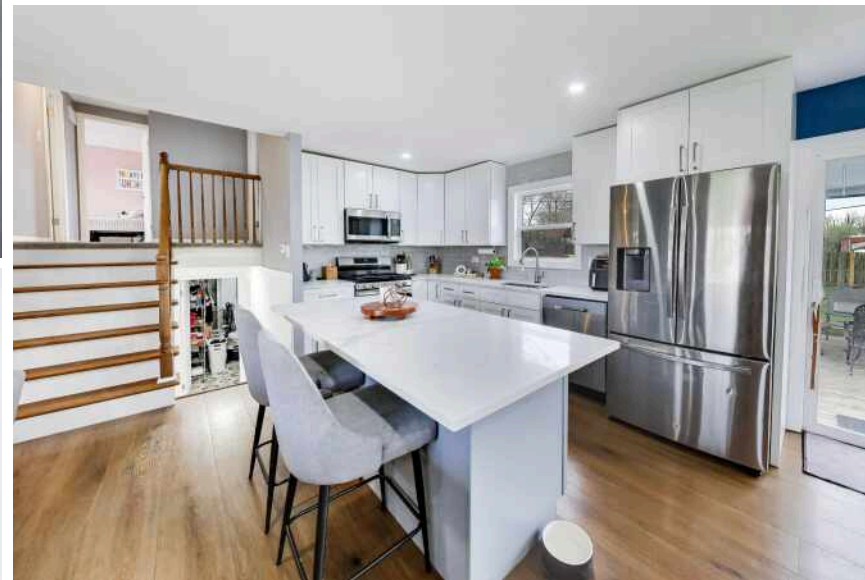


PERFECTLY LOCATED IN THE HIGHLY SOUGHT-AFTER GREENBRIER NEIGHBORHOOD OF ARLINGTON HEIGHTS

This beautifully updated split-level home offers 3 bedrooms and 2 full bathrooms with a bright, modern feel throughout. The updated kitchen features an open-concept layout ideal for both everyday living and entertaining, while the renovated bathrooms and new luxury vinyl plank flooring on the main and lower levels add style and functionality. Major updates include mostly new windows and an upgraded electrical panel, providing added comfort and peace of mind. Step outside to a large, private backyard, perfect for relaxing or hosting gatherings. Ideally situated just minutes from Twin Lakes Recreation Area and Frontier Park & Pool, this home truly combines comfort, convenience, and an unbeatable location.



3 BEDROOM
2 BATH







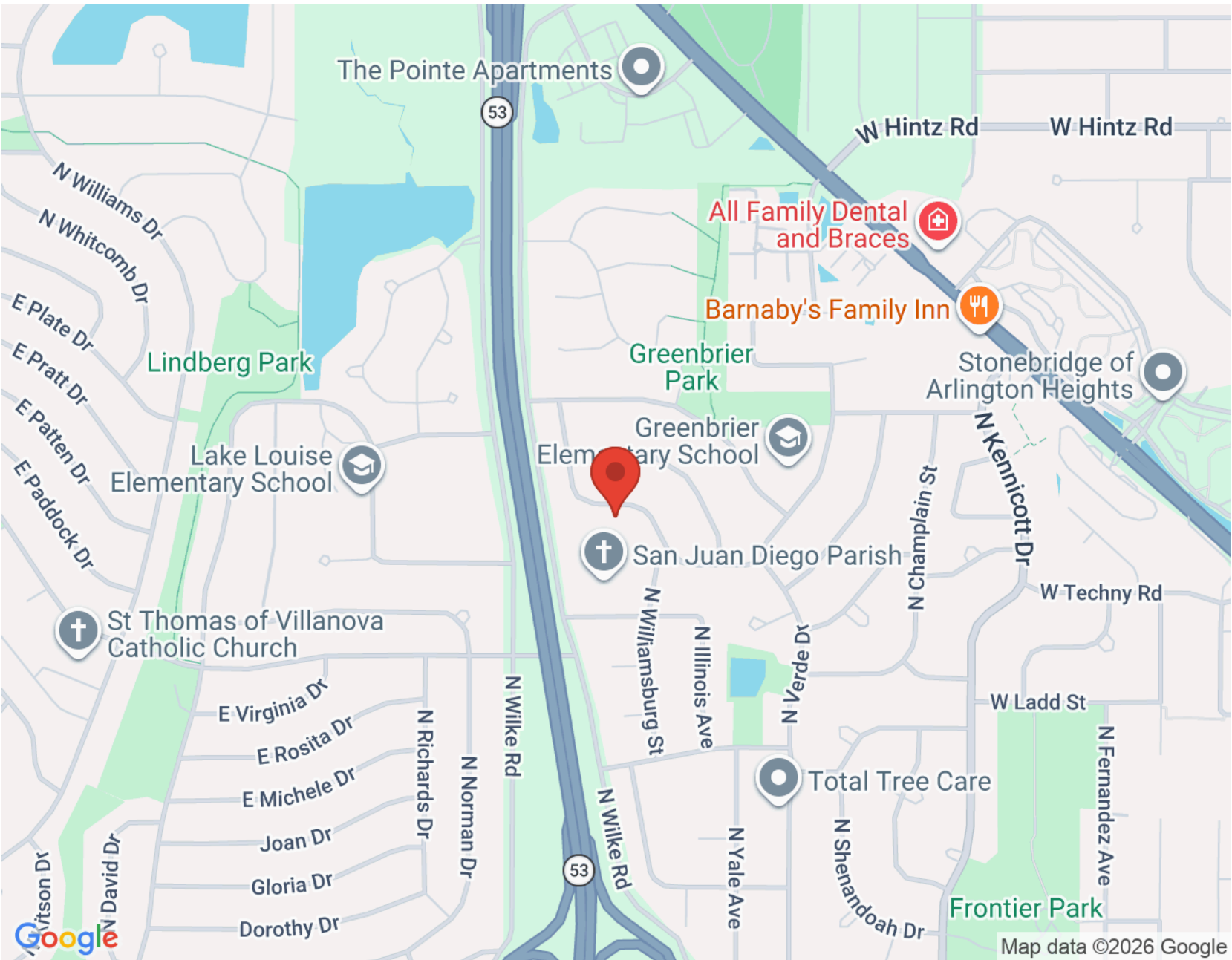
WITH ALL THE AMENITIES YOU WOULD EXPECT TO FIND IN LARGER URBAN SETTINGS, **ARLINGTON HEIGHTS** GIVES MOST CITIES A RUN FOR THEIR MONEY

Located 25 miles northwest of Chicago, the community has a vibrant downtown area, theaters, restaurants, shopping, parks, recreation, and two commuter train stations. It's no wonder Arlington Heights tops the list of the highest-populated villages in the country.

Arlington Heights is home to more than 200 restaurants, many situated in its downtown area and offering something for every taste.

The village hosts outdoor festivals, parades, and its ever-popular Frontier Days. Residents have plenty of bike paths, picnic areas, golf courses, lakefront paths, and more to enjoy.

Commuting downtown is a convenient 30-minute trip with two Metra stations offering direct access to Chicago's Ogilvie Station. The village also has direct access to I-90 as well as Route 53, which links to several interstates.



NOTES _____



CARRIE GOODMAN

(847) 542-9445

CARRIEGOODMAN@ATPROPERTIES.COM

WWW.CARRIEGOODMANHOMES.COM

CARRIE GOODMAN

**BETTER
T  GETHER
G  RUP**

 | **CHRISTIE'S**
INTERNATIONAL REAL ESTATE