

1610 W PARTRIDGE COURT #1
ARLINGTON HEIGHTS





LOVELY HOME; FABULOUS VIEW

Lovely two bed two bath manor home on main level! Spacious living area looks out over private patio and open space. Freshly painted in today's neutrals with white trim and doors. Large eat-in kitchen has generous area for table space and window overlooking living area. Primary bedroom has attached bath and large walk-in closet, and secondary bedroom has dual closets and direct access to 2nd bathroom. In-unit laundry. Newer light fixtures. Locked storage room off patio, as well as one car garage with room for additional storage. Fresh and comfortable, this is a great unit and will make a fantastic home. Welcome!

2 BEDROOM

2 BATH

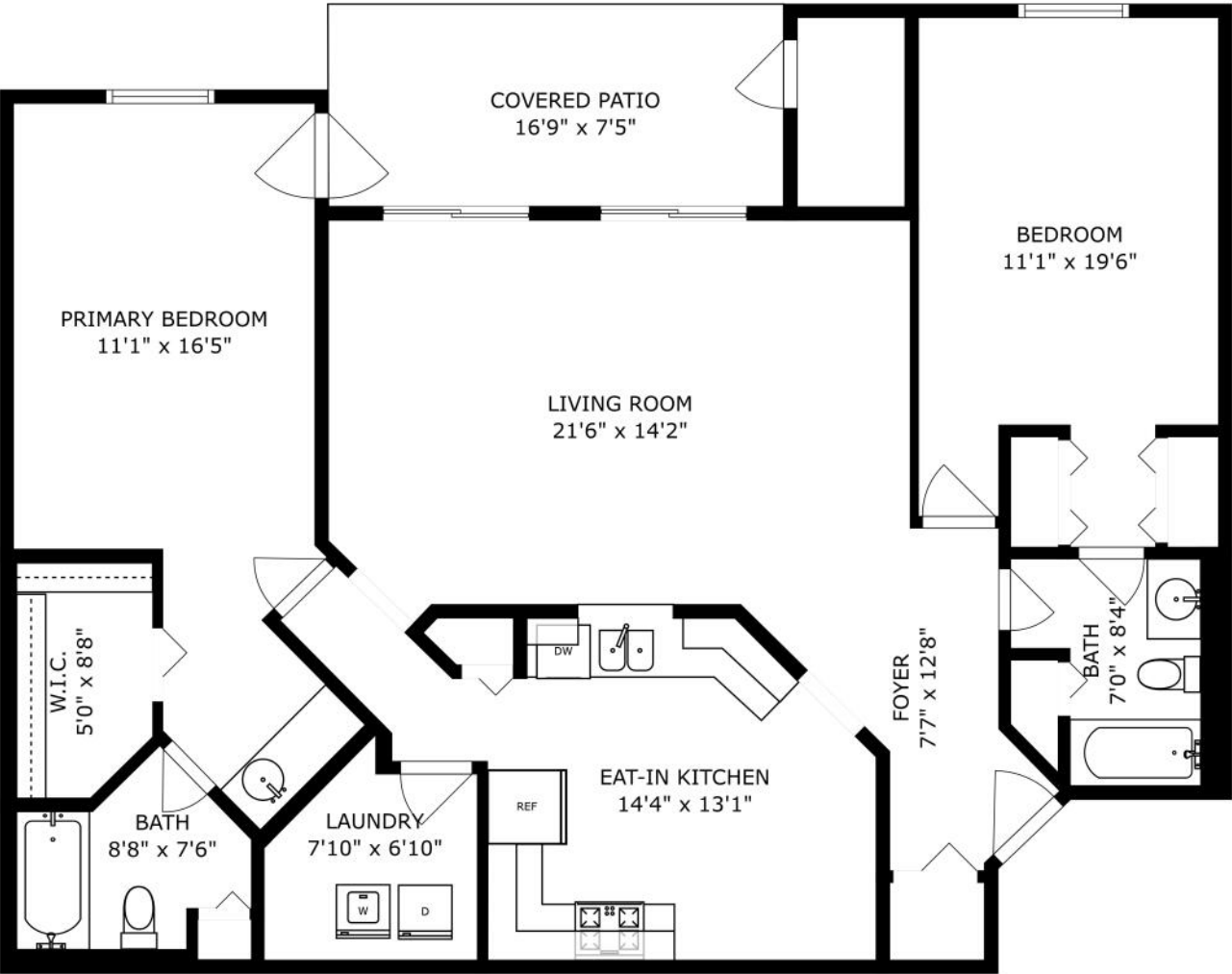
TAXES: \$3,329

ASSESSMENTS: \$301 / MONTH









SIZES AND DIMENSIONS ARE APPROXIMATE, ACTUAL MAY VARY.





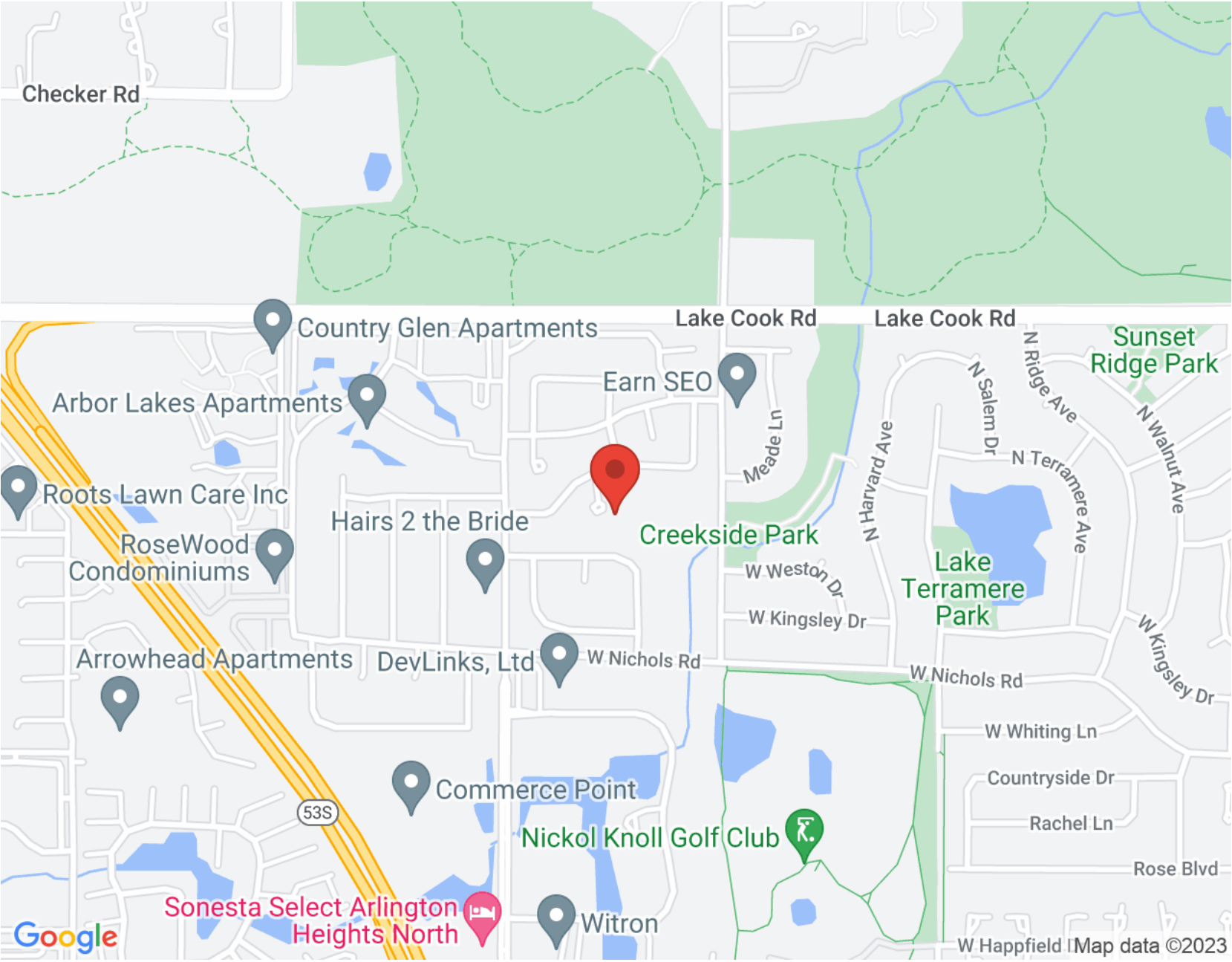
WITH ALL THE AMENITIES YOU WOULD EXPECT TO FIND IN LARGER URBAN SETTINGS, **ARLINGTON HEIGHTS** GIVES MOST CITIES A RUN FOR THEIR MONEY

Located 25 miles northwest of Chicago, the community has a vibrant downtown area, theaters, restaurants, shopping, parks, recreation, and two commuter train stations. It's no wonder Arlington Heights tops the list of the highest-populated villages in the country.

Arlington Heights is home to more than 200 restaurants, many situated in its downtown area and offering something for every taste.

The village hosts outdoor festivals, parades, and its ever-popular Frontier Days. Residents have plenty of bike paths, picnic areas, golf courses, lakefront paths, and more to enjoy.

Commuting downtown is a convenient 30-minute trip with two Metra stations offering direct access to Chicago's Ogilvie Station. The village also has direct access to I-90 as well as Route 53, which links to several interstates.



This image shows a blank sheet of white paper with horizontal ruling lines. The lines are evenly spaced and run across the width of the page. There are no margins, text, or other markings on the paper.



RENEE CLARK, CNE, SFR, GRI, CREN

RENEE CLARK HOMES

MOBILE: 847.612.0027

RENEE@RENEECLARKHOMES.COM

WWW.RENEECLARKHOMES.COM

Renee Clark
— H O M E S —



TOM CLARK

RENEE CLARK REAL ESTATE GROUP

847-946-3604

TOMCLARK@ATPROPERTIES.COM

WWW.RENEECLARKHOMES.COM



CHRISTIE'S
INTERNATIONAL REAL ESTATE

1610WPARTRIDGECOURT1.INFO