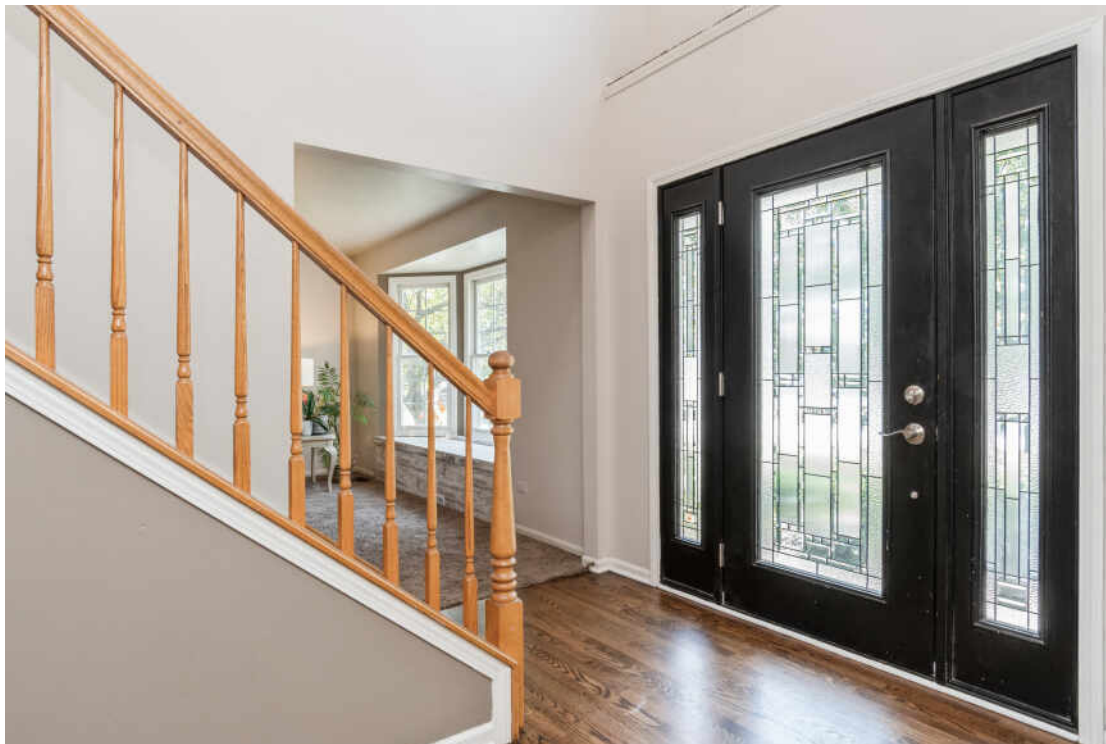


**16125 FAIRFIELD DRIVE**  
PLAINFIELD







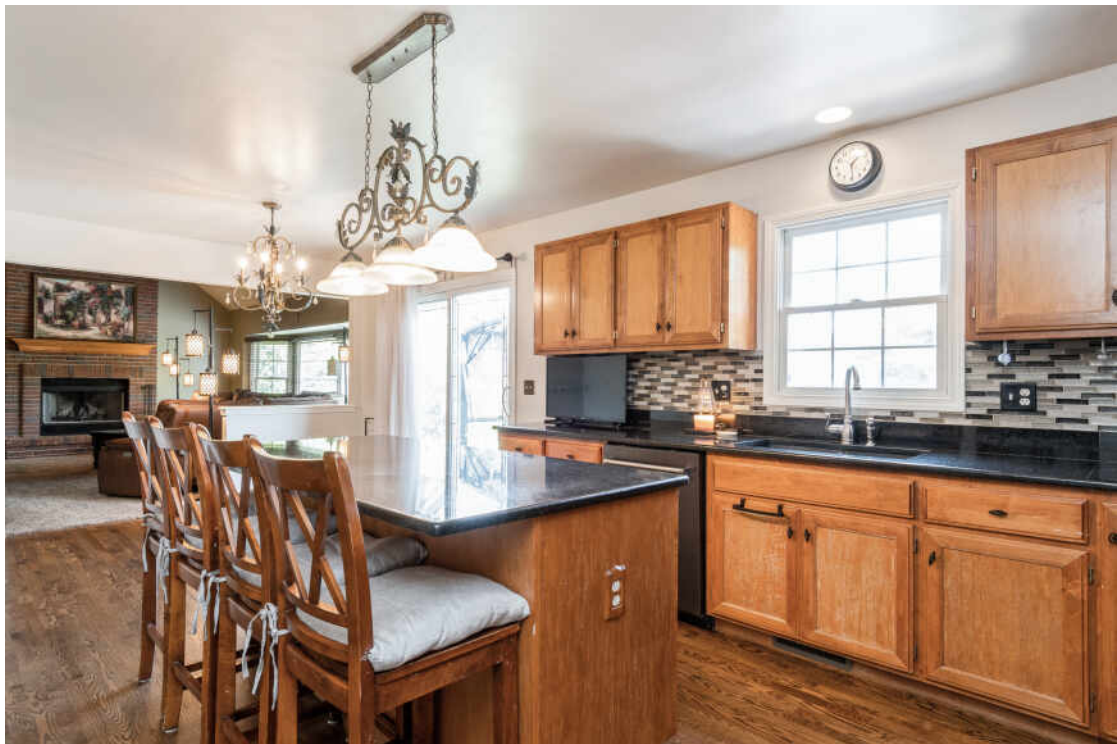
6 BEDROOM  
2.1 BATH  
TAXES: \$9,356

## WELCOME HOME

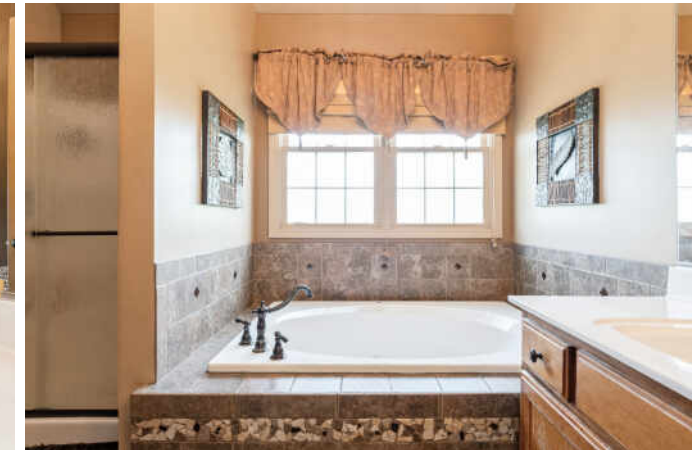
Welcome home to this spacious and beautiful SIX BEDROOM, 2.5 bath home with a FULL FINISHED basement - perfectly designed for comfort, functionality, and entertaining. From the moment you step into the soaring vaulted foyer, you'll appreciate the thoughtful layout throughout. The main level features newly refinished hardwood floors, a dual staircase, a private front office, formal living and dining rooms, and an expansive family room with a stunning cathedral ceiling and a dramatic floor-to-ceiling brick fireplace. The kitchen is both warm and functional with solid wood maple cabinetry, granite countertops, and modern appliances (just 3 years old). Choose which staircase to walk to the second level, where you'll find four generously sized bedrooms, three with walk-in closets. The primary suite includes a spacious en suite bath and an oversized walk-in closet. Head to the finished basement to discover two additional bedrooms with egress windows, a huge utility room, and a massive recreation area - ideal for a home theater, gym, or game room. This finished basement adds another 1,000 square feet to this property.

- Roof 2023
- A/C 2023
- Water Heater 2025
- Dishwasher 2024
- Washer & Dryer 2024
- 18' Above-Ground Pool With Gas Heater
- 3 Car Garage
- 2 Backyard Sheds (one oversized)
- Upgraded Light Fixtures
- Fenced Yard





















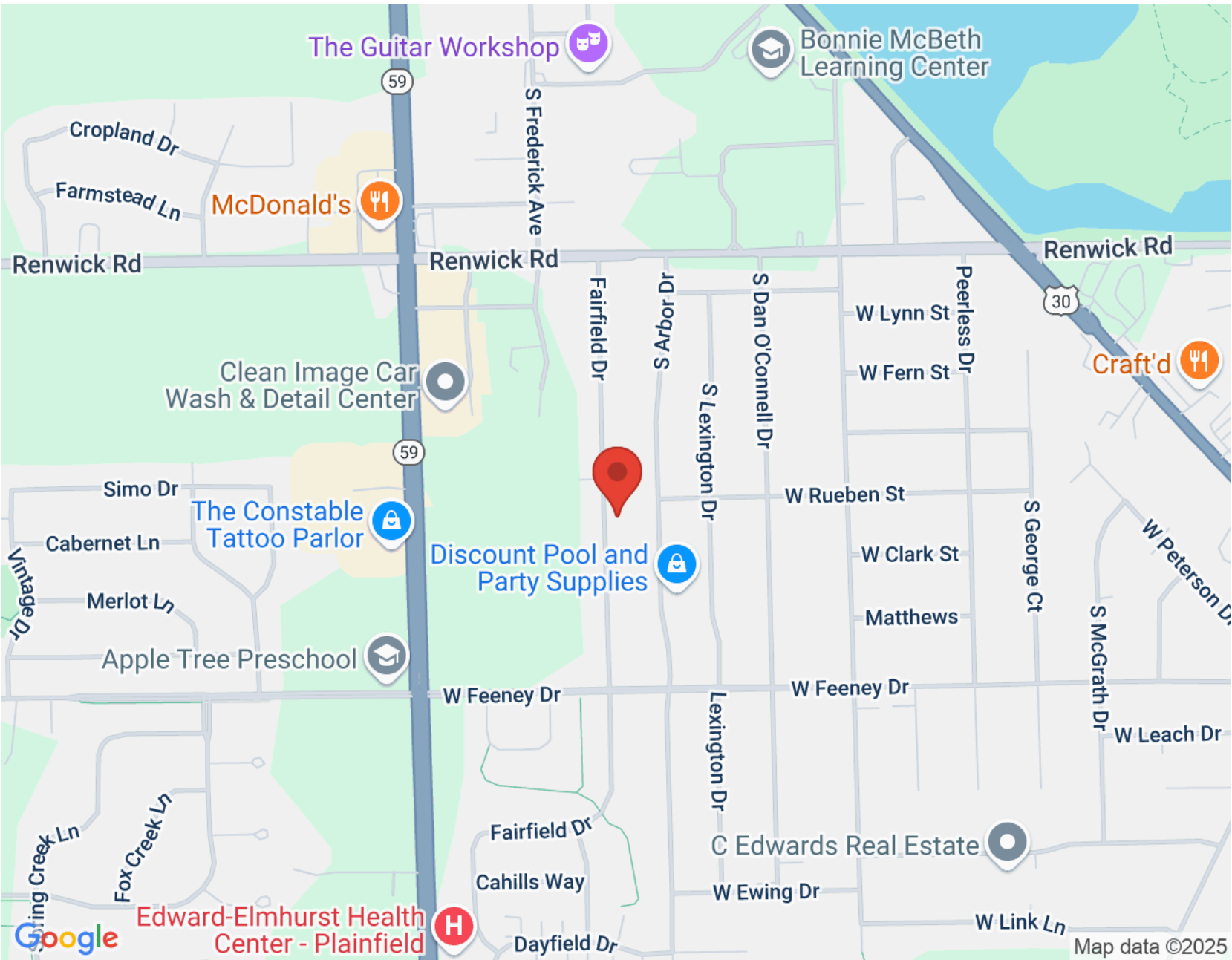
KNOWN AS “WILL COUNTY’S OLDEST COMMUNITY,” **PLAINFIELD** BOASTS A RICH HISTORY AND A THRIVING DOWNTOWN THAT HAS THE DISTINCTION OF BEING ON THE NATIONAL REGISTER OF HISTORIC PLACES.

Complete with picturesque landscaping and beautifully restored buildings, Downtown Plainfield offers ample shopping, dining, and entertainment. The area is also used for several events throughout the year, such as Plainfield Fest and Harvest 5K. Meanwhile, the community’s annual summer concert series and movies in the park are held at Settlers’ Park, which features an amphitheater, a lake, picnic shelter, playground, and trails.

The Lake Renwick Heron Rookery Nature Preserve offers residents and visitors the chance to see five species of birds during peak breeding seasons. The area comes equipped with guided tours, viewing scopes, and the Lake Renwick Bikeway, which is open all year.

Plainfield offers convenient access to I-55, which heads into downtown Chicago, as well as a number of highways.



[illegible]





## DINA DISERA

SENIOR BROKER ASSOCIATE/TEAM LEADER

815.405.6303

DINA.DISERA@GMAIL.COM



All specifications, features, designs, price, assessments, taxes and materials are subject to change without notice. Depicted floor plans and architectural renderings are only an artist's impression.

