

1615 GREENWOOD ROAD

GLENVIEW





3 BEDROOM
2 BATH
TAXES: \$17,334

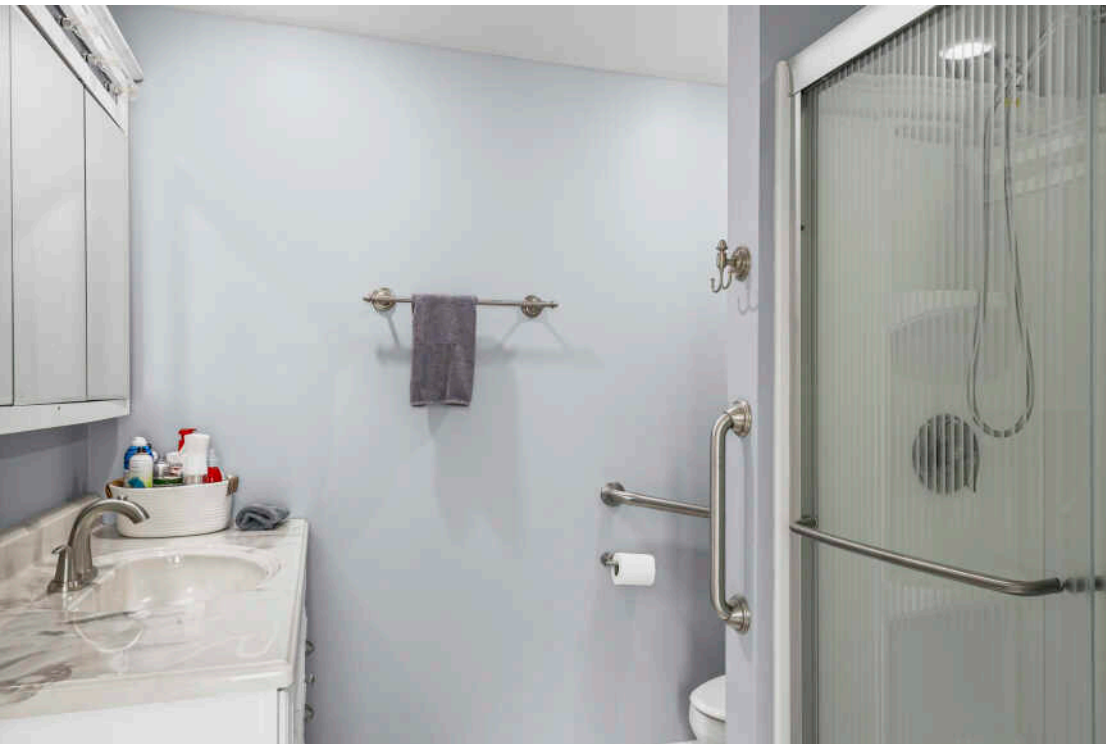
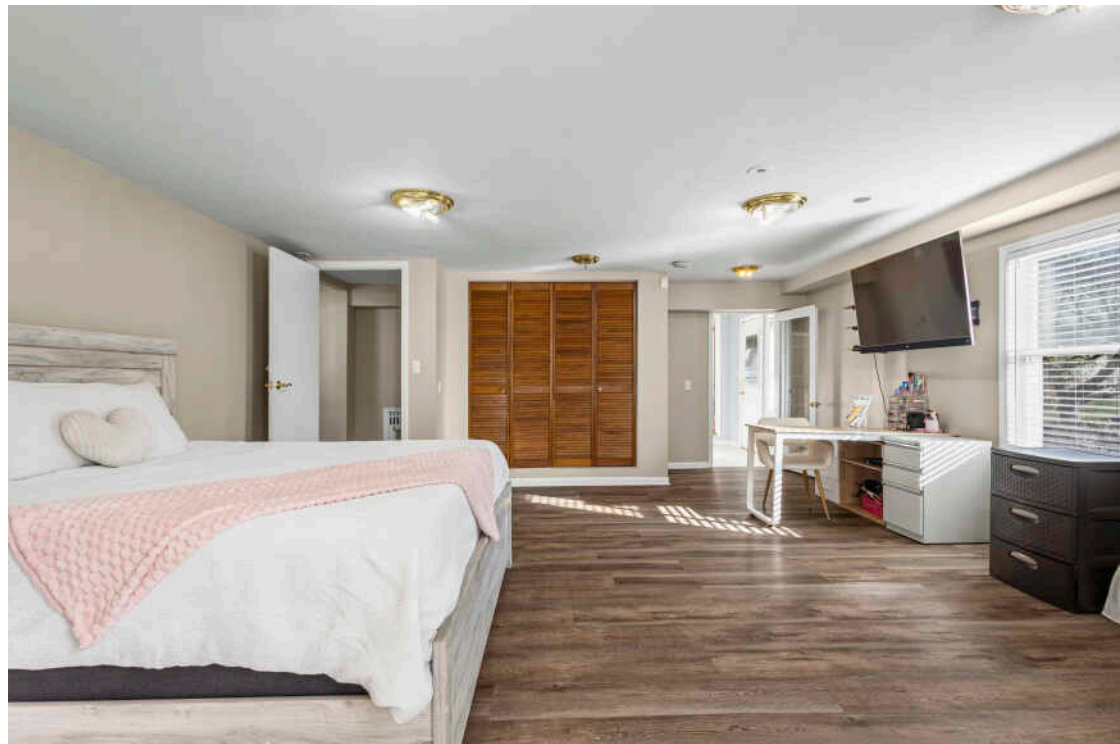
This property sits on over half an acre in an area surrounded by new construction within the highly sought-after School Districts 34 and 225.

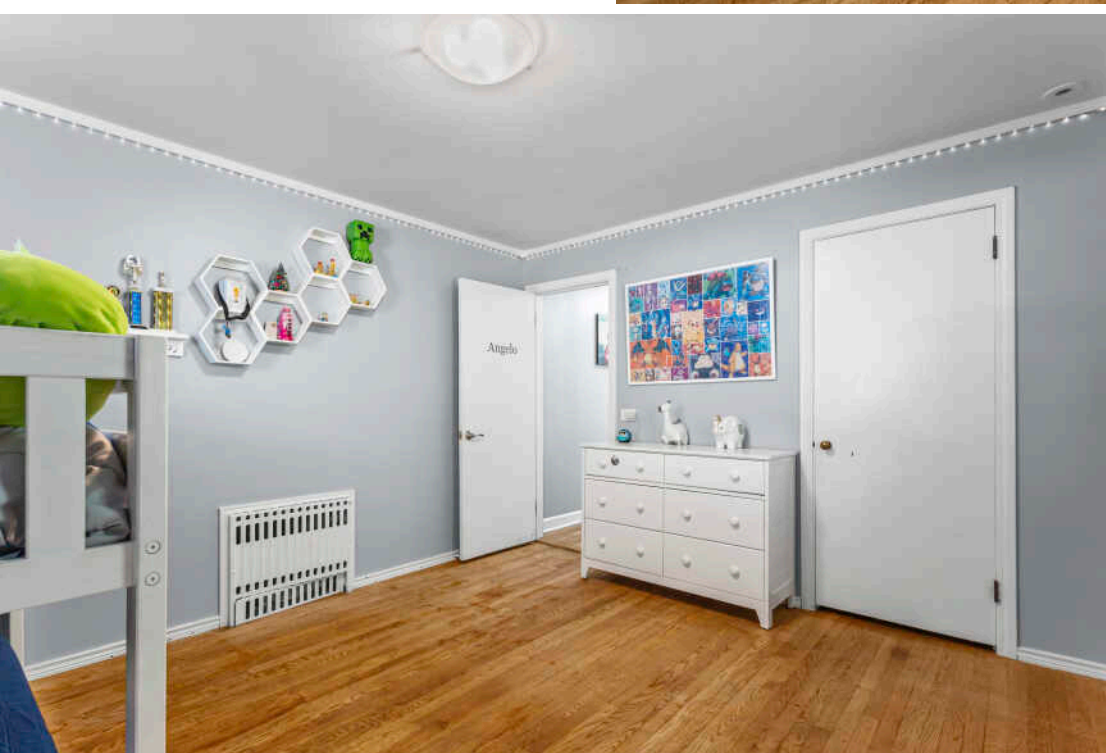
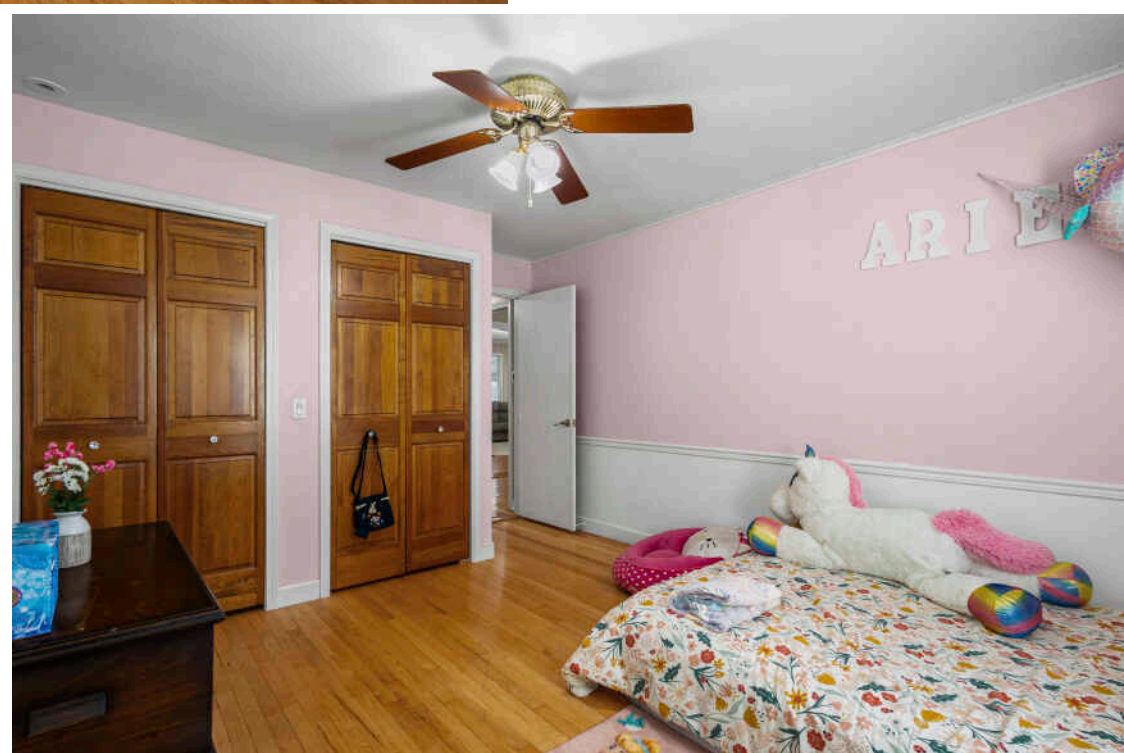
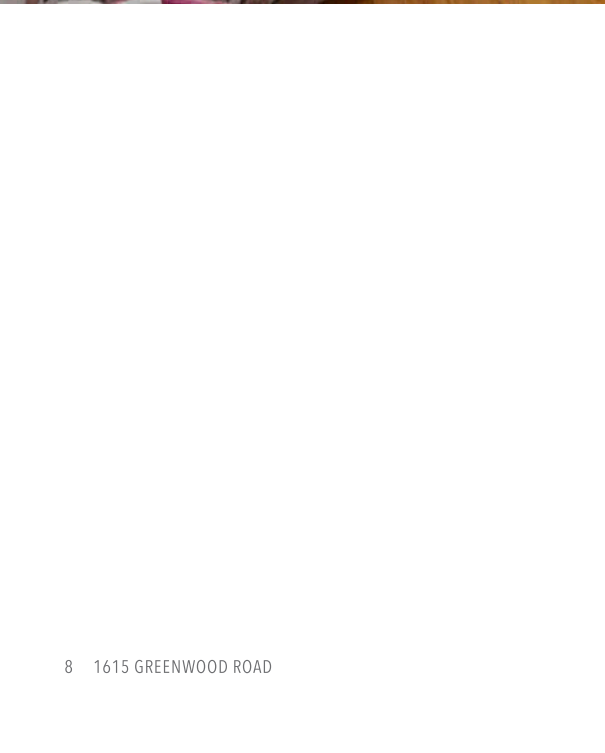
Set back from the street for total privacy, this property offers a detached three-car garage plus ample guest parking. Step inside and be amazed by the spacious interior, featuring three bedrooms and two full baths. The main bedroom is exceptionally large, providing plenty of room for a sitting area or future ensuite expansion. Enjoy two cozy fireplaces-one in the living room and another in the family room, which opens to the dining area.

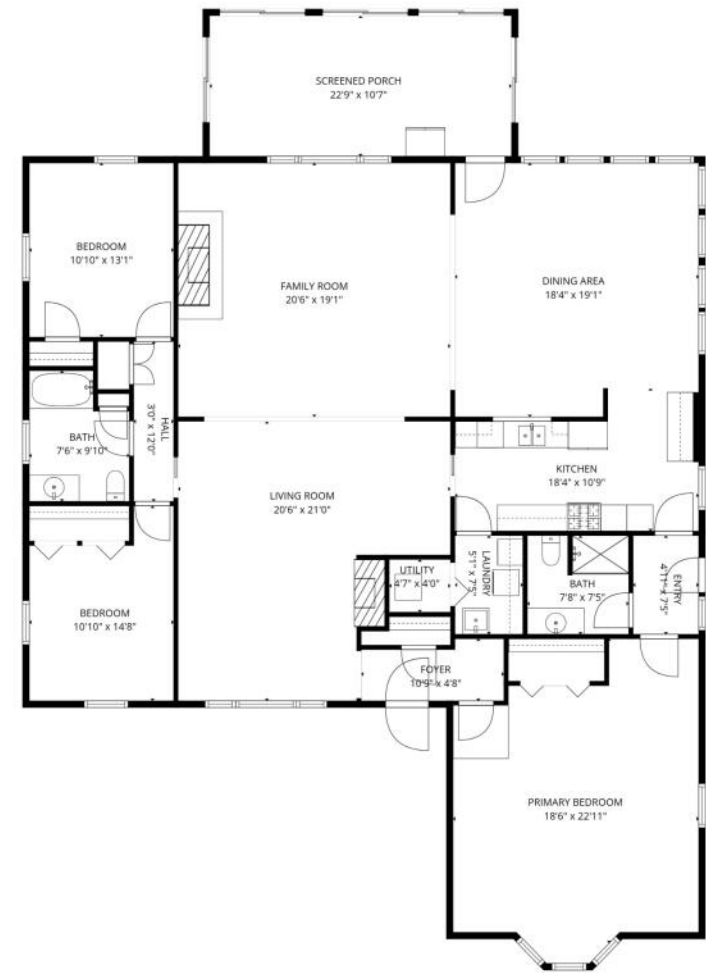
Outside, the chain-link fenced area is great for pets, but note that the property extends all the way back to the white fence, offering even more outdoor space and potential. Exclusions: Stainless steel refrigerator in the kitchen, washer/dryer, and wood playset in the yard. Inclusions: Refrigerator in the sunroom. Optional: Seller is willing to leave the trampoline if desired-please specify in the contract if you'd like it included.

Property sold "As Is"



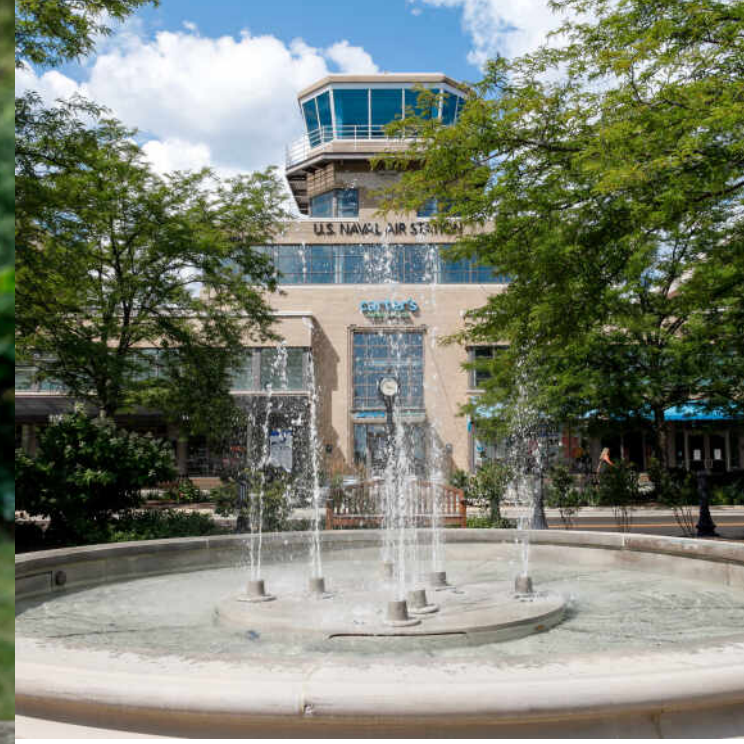






TOTAL: 2358 sq. ft
FLOOR 1: 2358 sq. ft
EXCLUDED AREAS: UTILITY: 18 sq. ft, SCREENED PORCH: 241 sq. ft, WALLS: 132 sq. ft

SIZES AND DIMENSIONS ARE APPROXIMATE, ACTUAL MAY VARY.



JUST 20 MILES FROM DOWNTOWN CHICAGO, **GLENVIEW** IS A DESTINATION IN ITS OWN RIGHT.

The scenic North Shore town has expanded rapidly thanks to its established neighborhoods, convenient access to transportation, and array of amenities.

More than 45,000 people call Glenview home, with properties ranging from townhomes and condominiums to luxury custom homes featuring the latest amenities. Newer homes can also be found at The Glen, a large development on the site of the former Glenview Naval Air Station that offers an assortment of shops and restaurants, a movie complex, the Kohl Children's Museum, and access to one of the town's two Metra stations.

Glenview is served by a number of public and private schools, including Glenbrook South High School, ranked among the top in the nation according to Business Insider.

The Glenview Park District offers indoor and outdoor pools, golf courses, soccer fields, nature trails, an ice center, tennis club, and multi-purpose community center.

In addition to modern development, Glenview celebrates and preserves its early days with two notable attractions: Wagner Farm and The Grove. A 20-acre working farm, Wagner Farm has hands-on programs - horseback riding, tractor driving, and other activities - that reflect a day in the life of a 1920s farmer. The Grove, a National Historic Landmark, includes a prairie, nature trails, historic buildings, and a log cabin that dates back to the 1850s.





MIRELLA CAPUTO, BROKER

(847) 845-2207

MIRELLACAPUTO@ATPROPERTIES.COM



All specifications, features, designs, price, assessments, taxes and materials are subject to change without notice. Depicted floor plans and architectural renderings are only an artist's impression.

