

1616 SHERIDAN ROAD #3E
WILMETTE





RESORT LIVING ON THE LAKE!

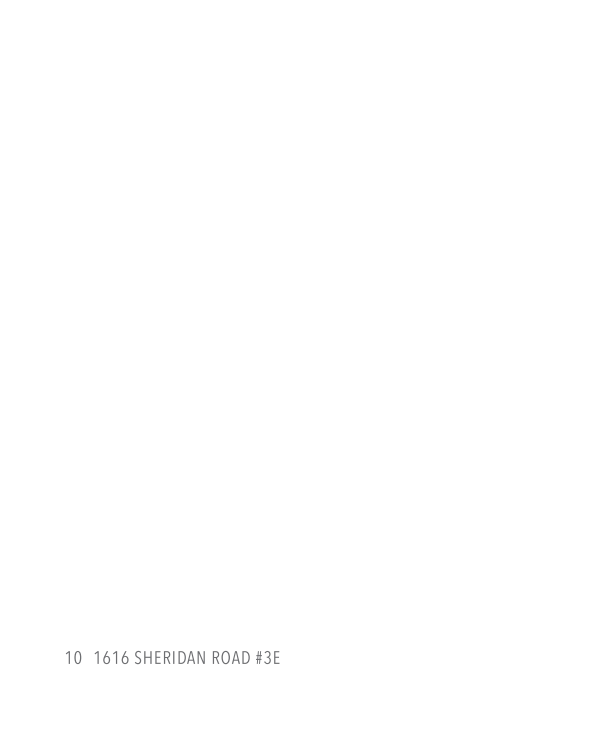
Set the stage for beautiful resort living in this fabulous 3 bedroom lake front condo! Owned by a well-known theatre director and a costume designer, the setting and view are an inspiration! Lovely foyer for greeting guests leads to a stunning and large living room with breath taking lake views and a balcony. The spacious dining room is perfect for entertaining a large group plus the white cabinet kitchen has plenty of storage and counter space for cooking. There are three good size bedrooms with generous closet space all with handsome plantation shutters. The primary bedroom has a private en-suite bathroom and walk-in closet plus there is a full hall bathroom for the other bedrooms and a charming powder room off the foyer for guests. A Bosch washer and dryer is conveniently located in the unit plus there is a laundry room in the building. Valet indoor parking is available for \$135/mo and outdoor self parking is \$65/mo. The building has on site management, outdoor pool, party room, a rentable guest apartment, private beach area, storage and is across the street from shopping and restaurants at Plaza del Lago.

3 BEDROOM
2.1 BATH
TAXES: \$6,237
ASSESSMENTS: \$1,909 / MONTH

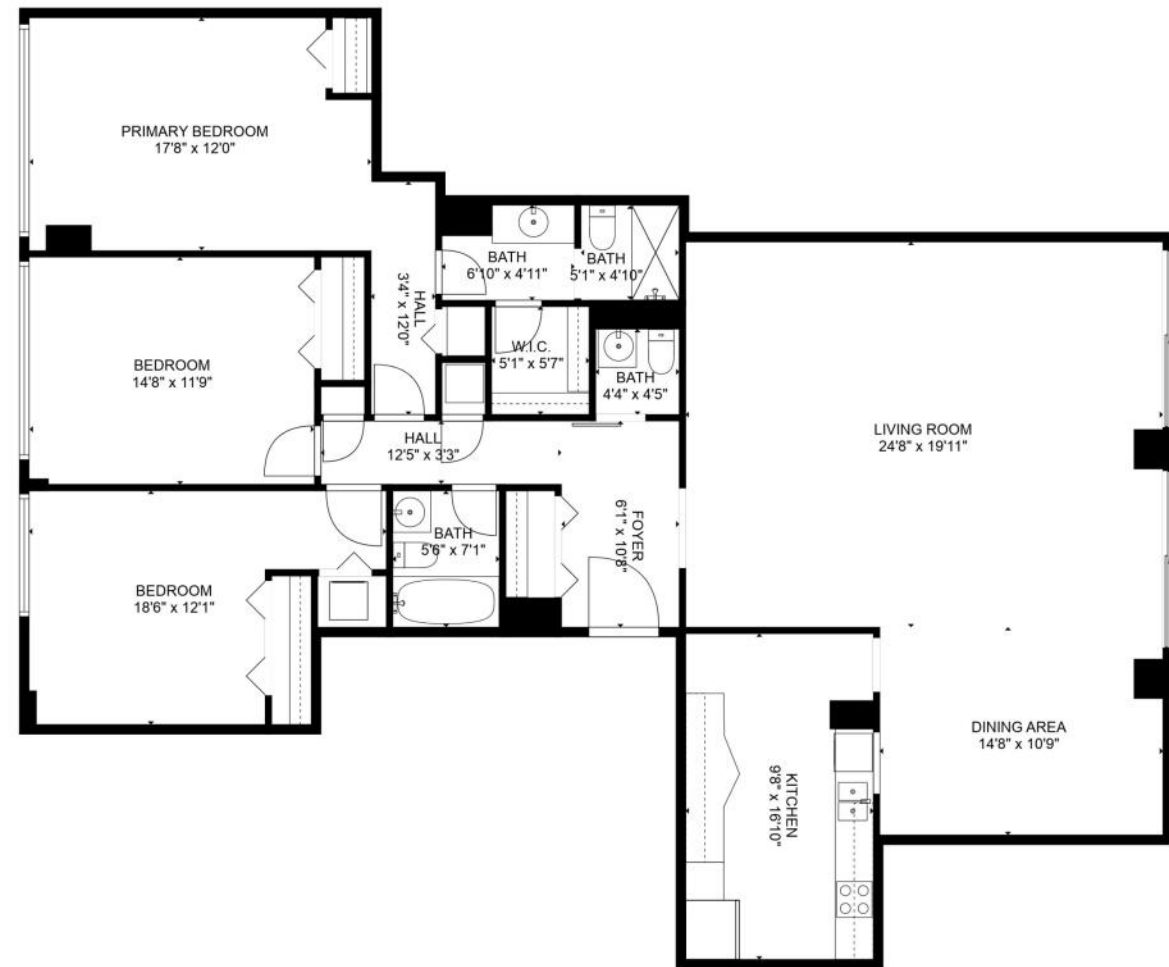












Total GLA: 1807 sq. ft | Total: 1807 sq. ft
 Floor 1: 1807 sq. ft

FLOOR PLAN CREATED BY CUBICASA APP. MEASUREMENTS DEEMED HIGHLY RELIABLE BUT NOT GUARANTEED.



MARINA BURMAN

MOBILE: 847 401-1048

OFFICE: 847-832-0002

MARINABURMAN@ATPROPERTIES.COM

