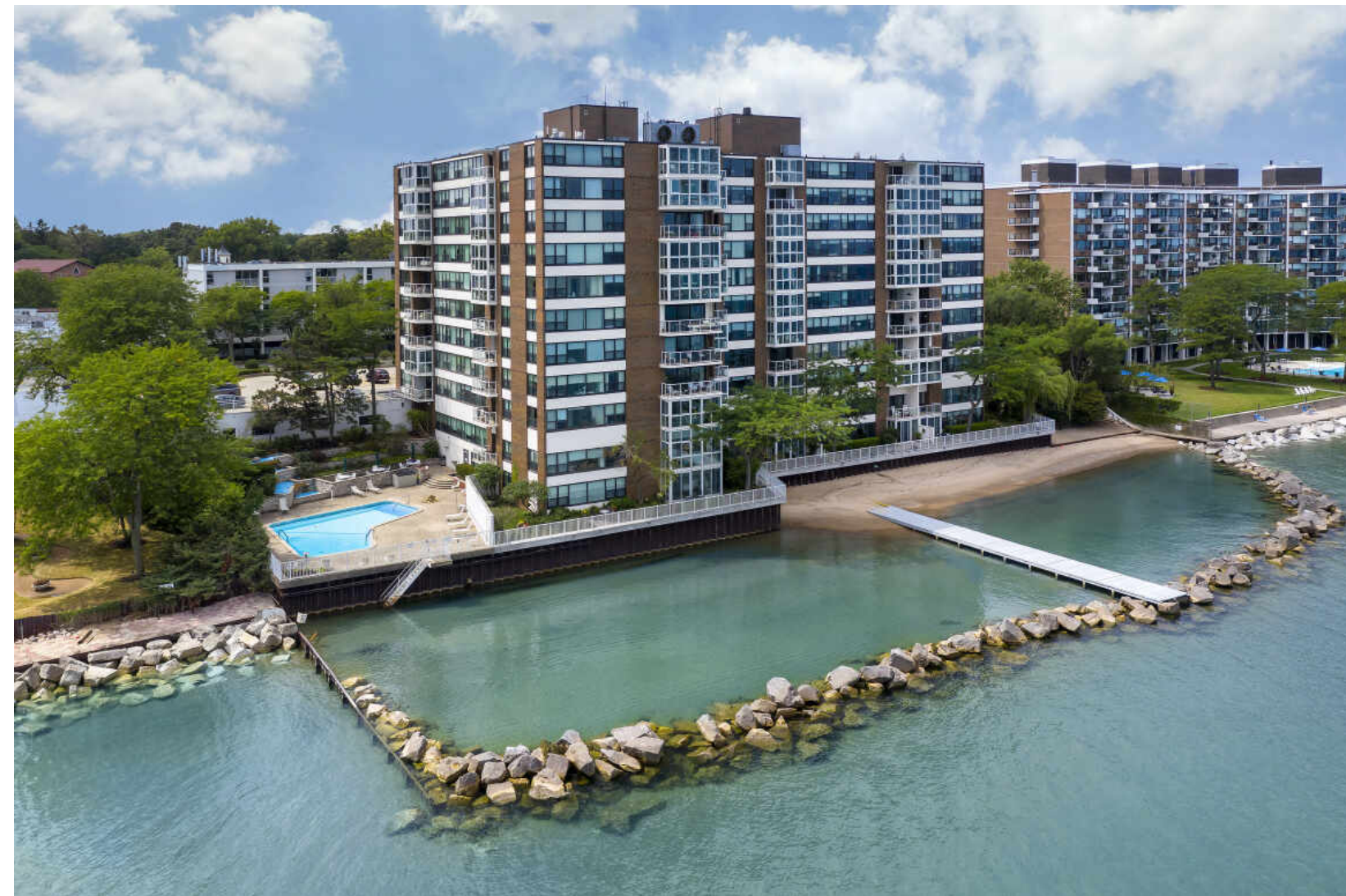




1616 SHERIDAN ROAD #8D WILMETTE



1616 SHERIDAN ROAD #8D · WILMETTE

@properties

CHRISTIE'S  
INTERNATIONAL REAL ESTATE

LP LUXURY  
PORTFOLIO  
INTERNATIONAL



CHRIS VEECH BROKER

847.913.3662 mobile  
chrisveech@atproperties.com

Chris Veech



1616 SHERIDAN ROAD #8D • WILMETTE





LOBBY



## 1616 SHERIDAN ROAD #8D CITY STYLE FAB LAKEFRONT LIVING IN WILMETTE

### FEATURES

A very special opportunity knocks for fabulous hip city vibes right here in Wilmette! This stunning 2021 designer gut renovation of the largest unit at coveted 1616 Sheridan is a sophisticated and spacious residence unlike any other. Expansive views of Lake Michigan welcome you in the foyer and throughout the living areas of this ONE level 3000+ square foot home, created by combining multiple units. Sought after luxury architects Downey Szafarz designed the residence with today's open floor plan and luxury amenities, and no expense was spared creating this exceptional lakefront home. A true gourmet cook's kitchen features the top-of-the-line Wolf induction range (boils water super fast), two Wolf ovens and microwave. The refrigerator, two frig drawers and bar frig are all by Sub Zero. Gorgeous custom cabinetry, instant hot water, Bosch dishwasher, a large deep composite sink, walk-in pantry and an expansive island make this kitchen sensational, with amazing lake views everywhere. The generous open living/dining area is centered on a lovely fireplace feature with custom built ins and electric blinds. The separate Den has double sliding doors to open up it's convenient bar and wine storage to the main living area, and includes its own powder room for privacy and versatility of space. The Primary Suite has two nicely appointed walk-in closets, a beautiful bathroom with separate walk-in shower/WC area & heated towel rack. Two additional bedrooms, one large enough to comfortably accommodate a bed, Peloton and desk. Two hall baths are gorgeously appointed and designed with practical storage in mind. Simply Stunning Lakefront Living!



**CHRIS VEECH** BROKER

847.913.3662 mobile

[chrisveech@atproperties.com](mailto:chrisveech@atproperties.com)







LIVING





DINING





SITTING





KITCHEN

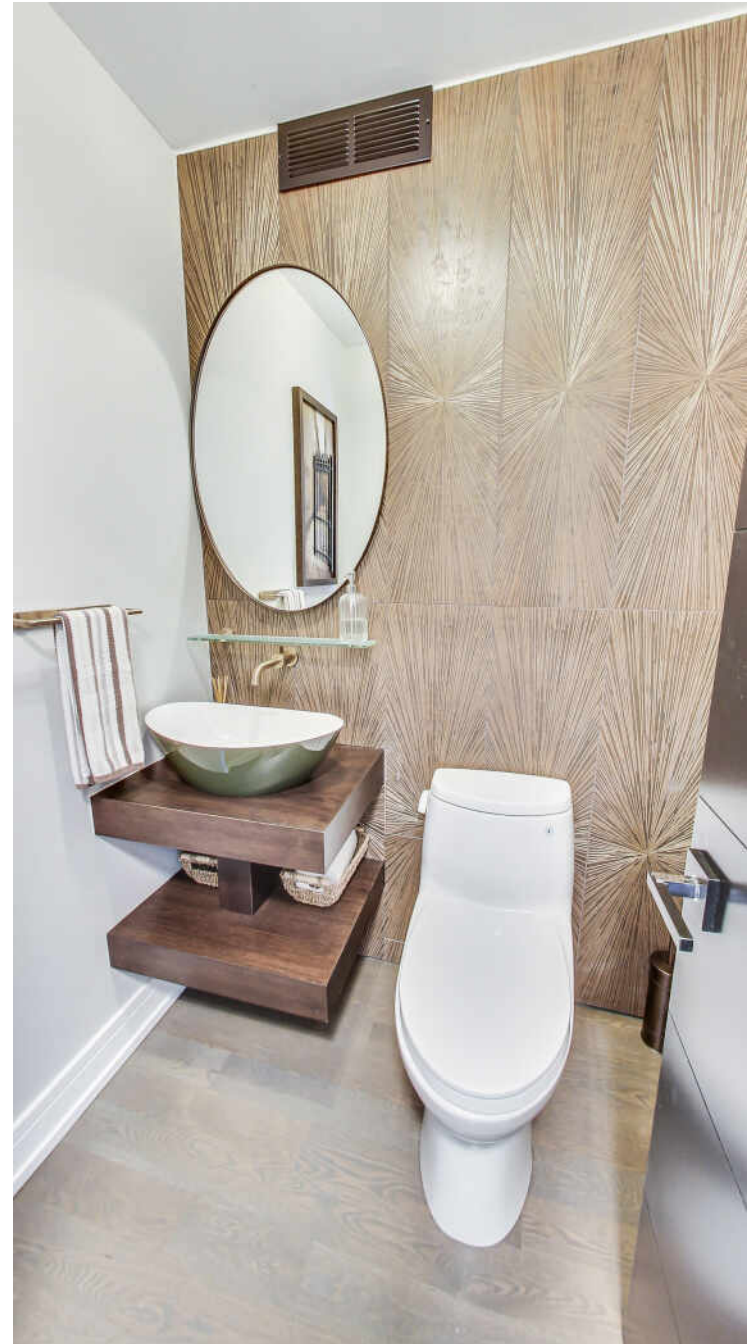






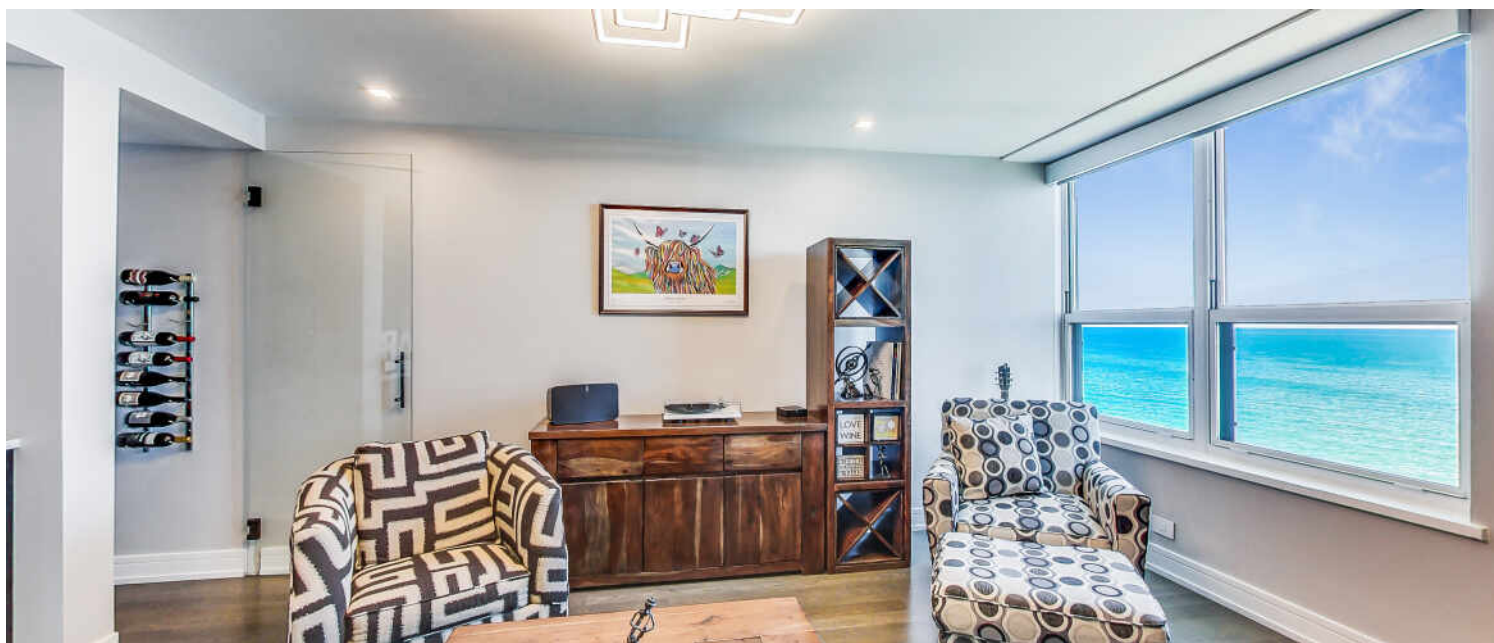


POWDER

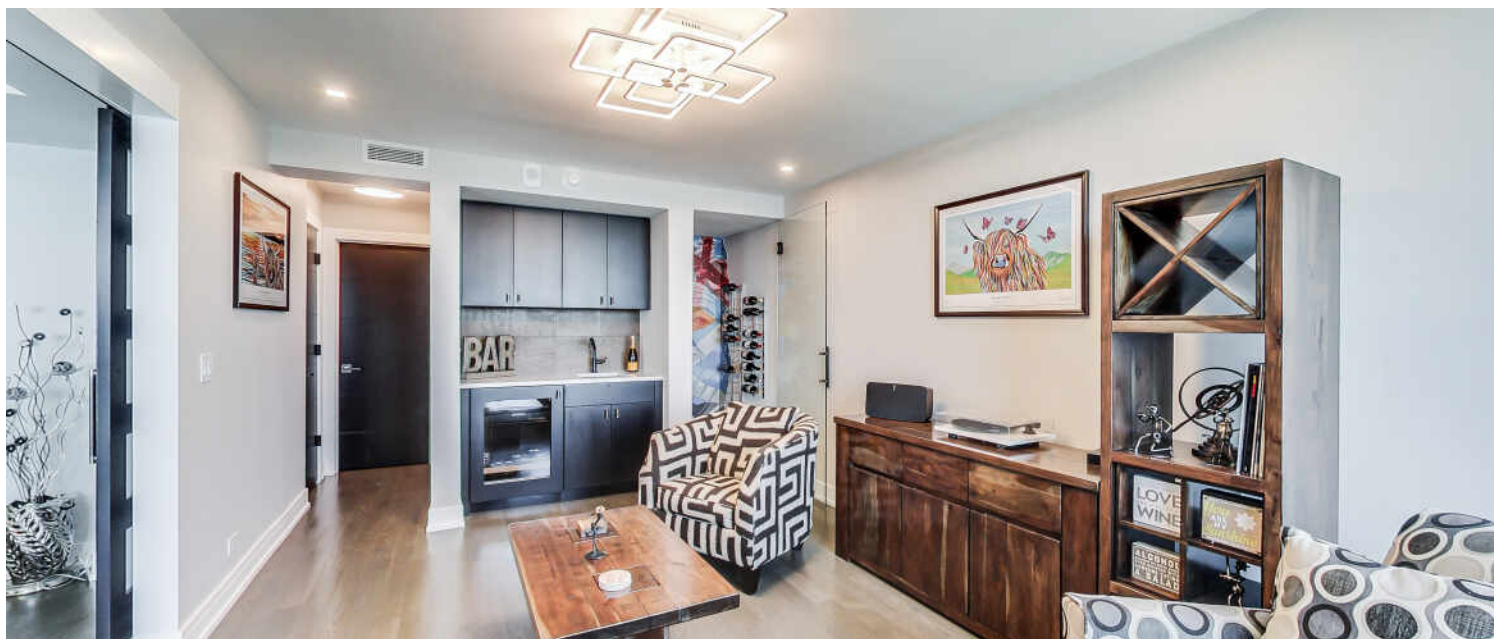


POWDER





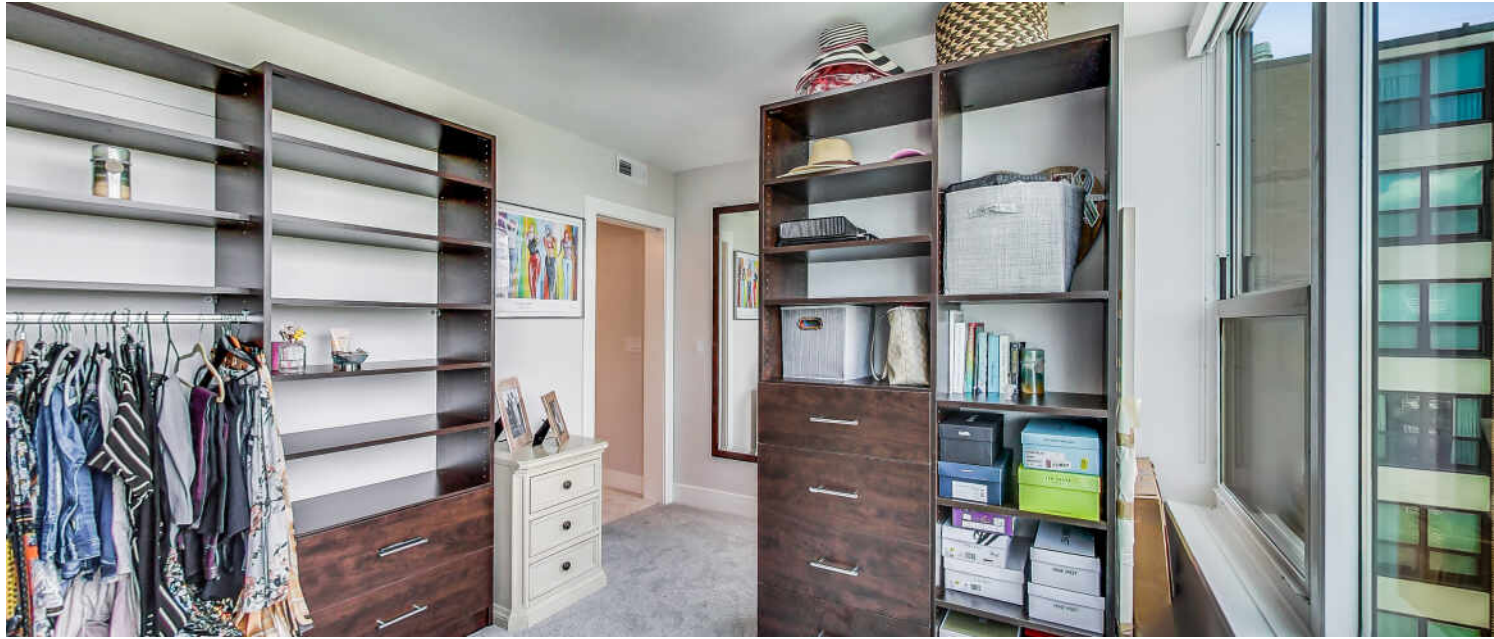
DEN



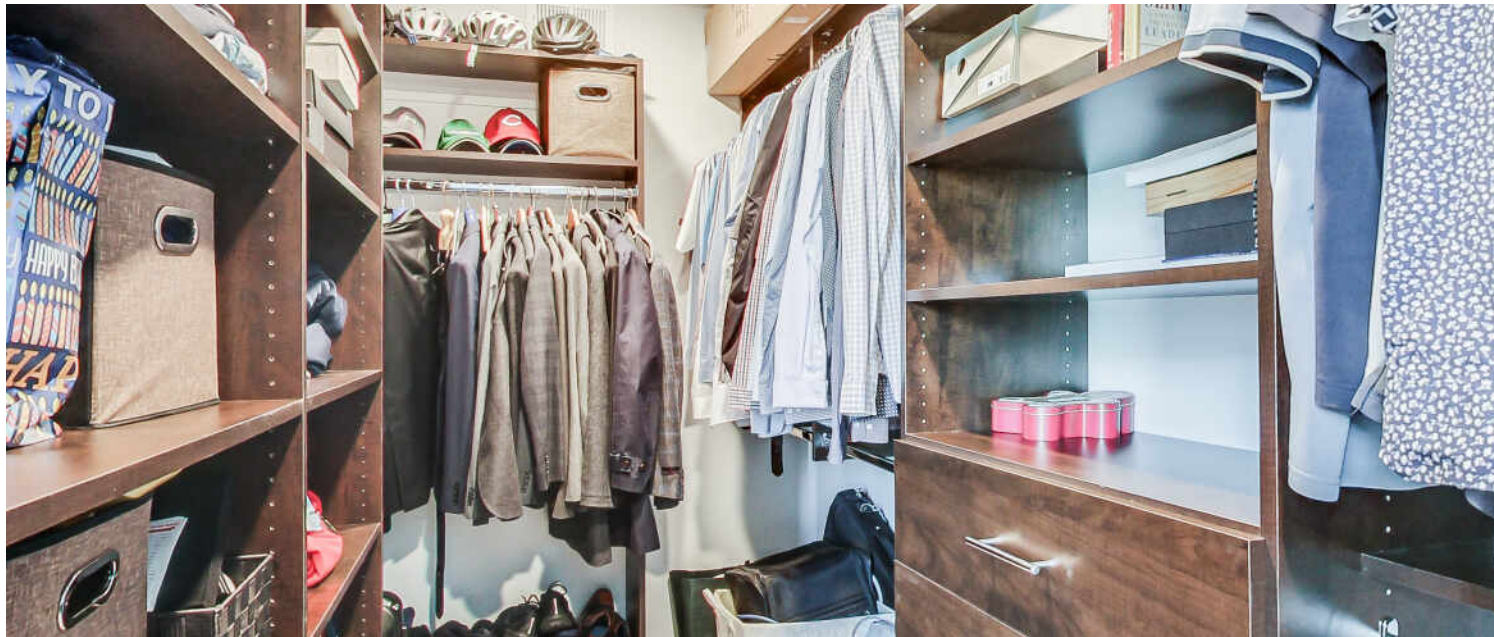


PRIMARY BEDROOM





DRESSING ROOM



WALK-IN CLOSET



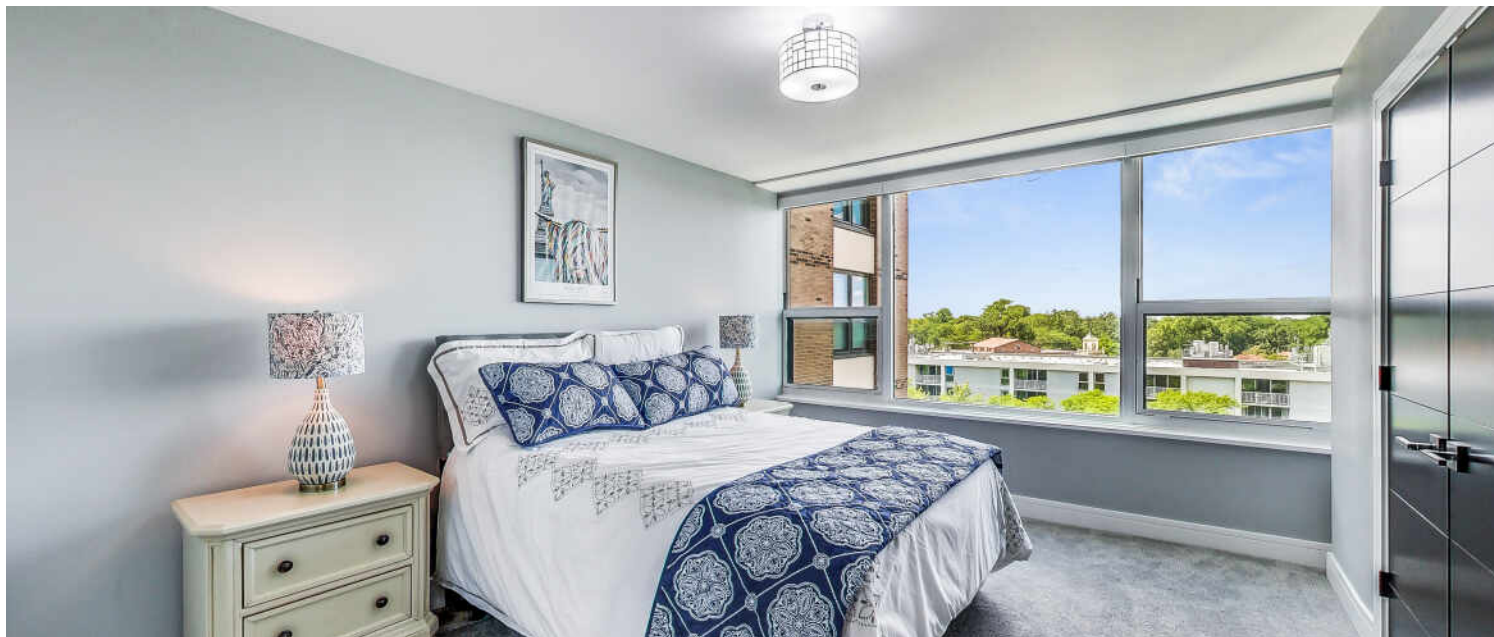
ENSUITE



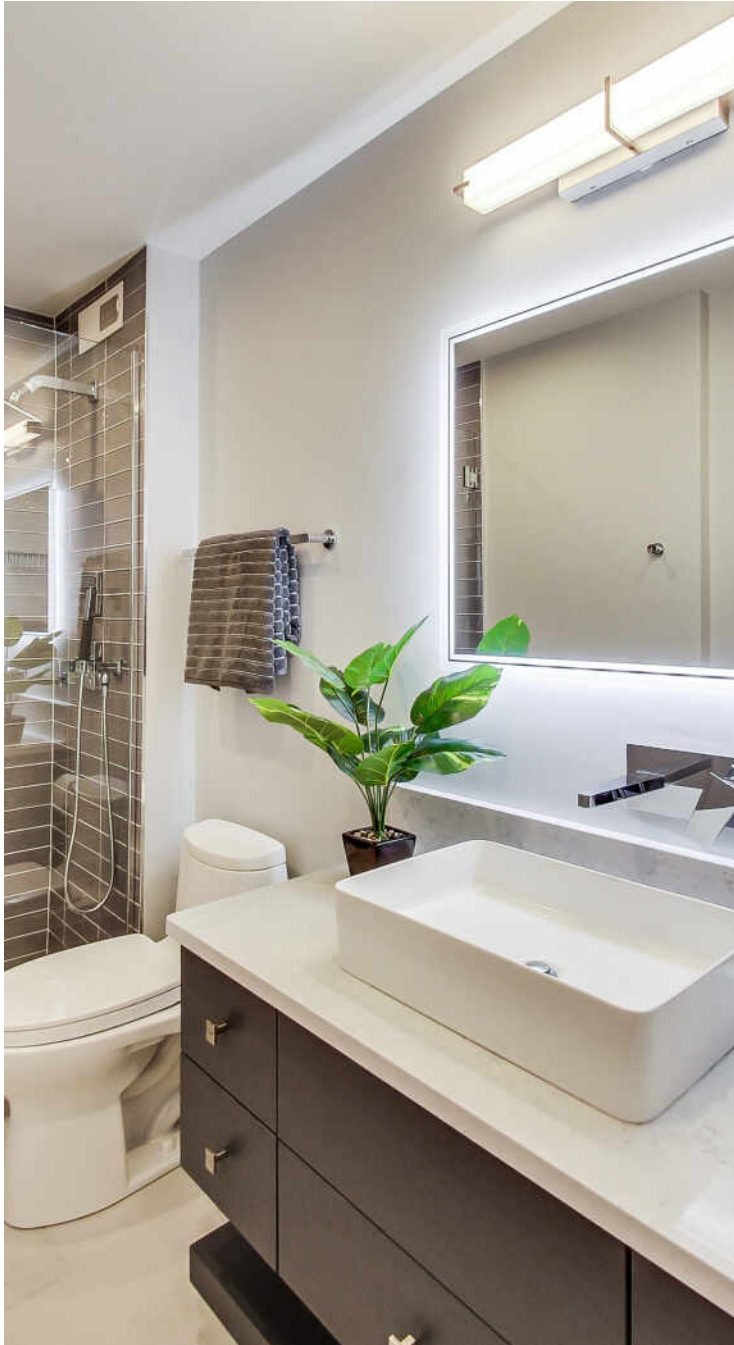




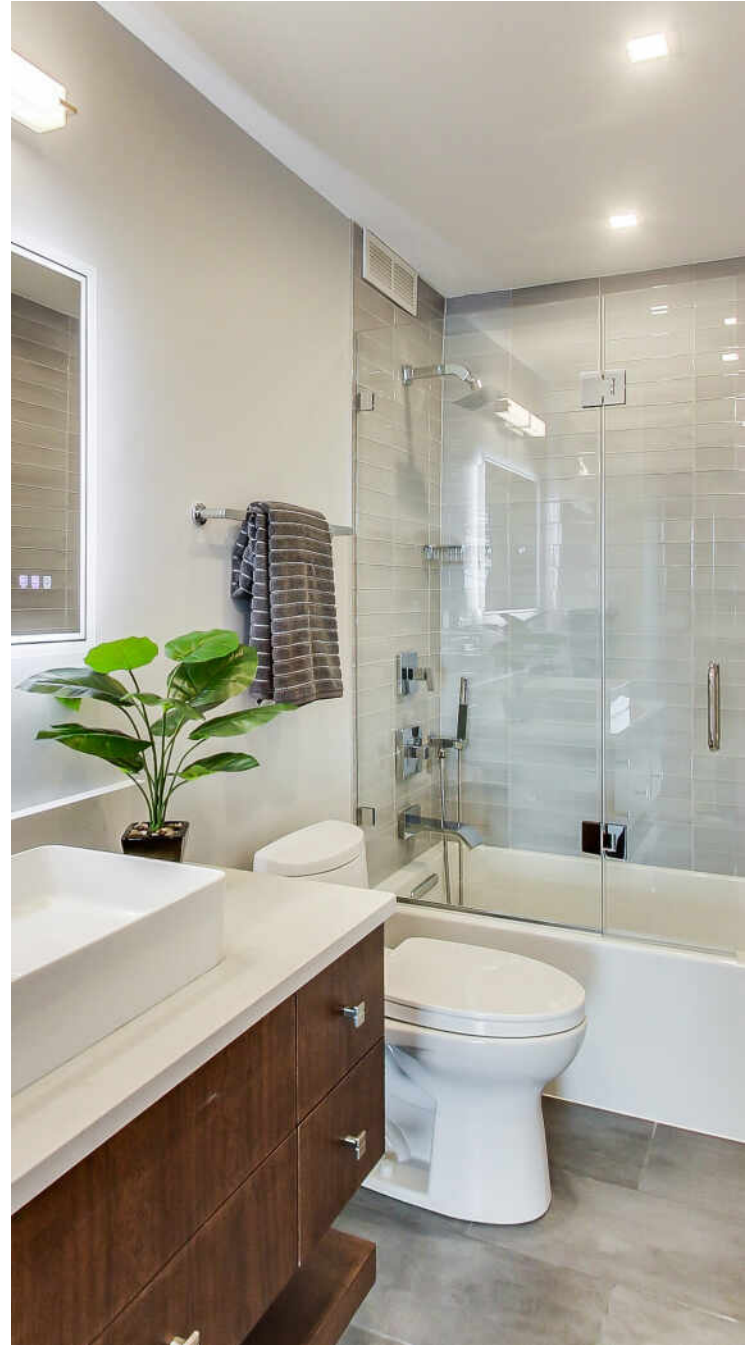
BEDROOM



BEDROOM



BATHROOM



BATHROOM





BEDROOM

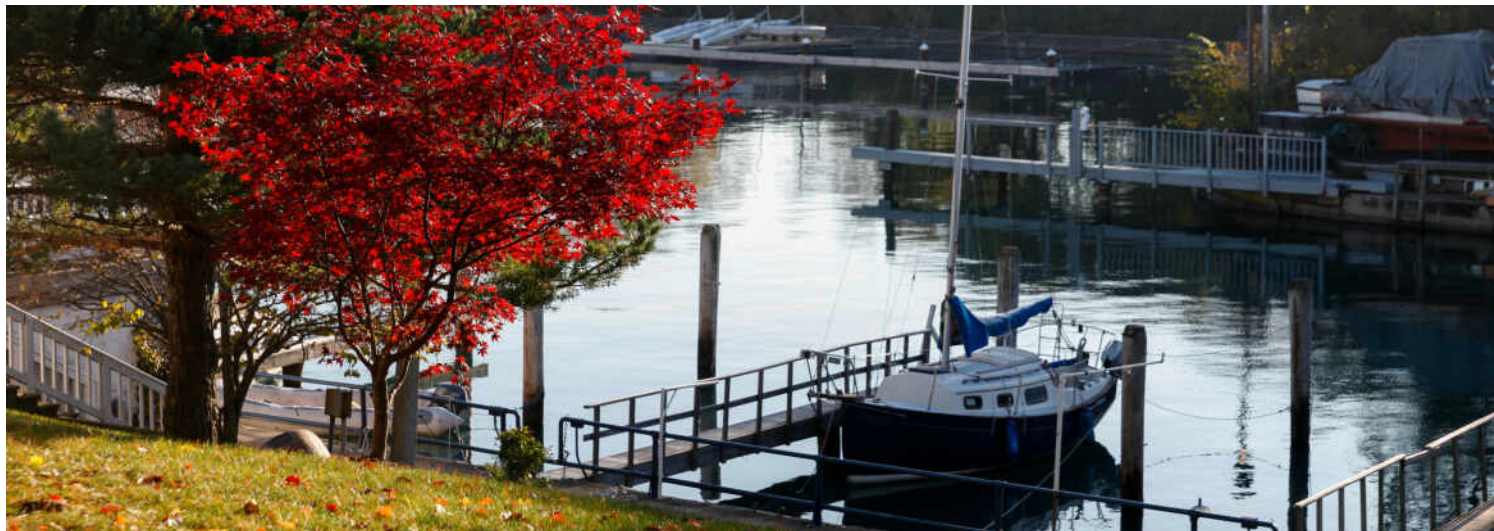


POOL



BEACH





RANKED BY *CHICAGO* MAGAZINE AS ONE OF THE CHICAGO AREA'S BEST PLACES TO LIVE, **WILMETTE** IS A VIBRANT TOWN WITH A WEALTH OF AMENITIES.

*Locals love the convenience that comes with living in this picturesque North Shore community. From shopping and fine dining to a beautiful lakefront setting that's within easy reach of downtown Chicago, Wilmette has it all.*

When it comes to housing, there's no shortage of architectural styles and price points in this lakefront community. Quintessential Cape Cod, Victorian, and Colonial homes line the village's historic streets, many of which are paved with clay-fired bricks from the 1800s. In addition to single-family homes, there are beachfront condominiums and townhomes. While well-kept homes maintain Wilmette's rich architectural history in all of its glory, new construction attests to the village's enduring popularity.

Residents also have access to nationally recognized New Trier High School, located in Winnetka.

Wilmette's Metra station and access to I-94 make commuting to downtown Chicago a breeze, but there's plenty of reasons to stay local. At the heart of town is the Village Center, where you'll find specialty stores, restaurants, and the Wilmette Theatre. Along Sheridan Road there is Plaza del Lago, providing more shops and services to locals. Meanwhile, ample recreational activities are available at Gillson Park and beach, Wilmette Harbor, and the Centennial Recreation Complex, which includes swimming, tennis, and ice skating.





3144 sq ft





