

# 1617 CHERRY BLOSSOM DRIVE

LAKE COUNTY







3 BEDROOM  
4 BATH  
TAXES: \$5,294  
ASSESSMENTS: \$4,600 / YEAR

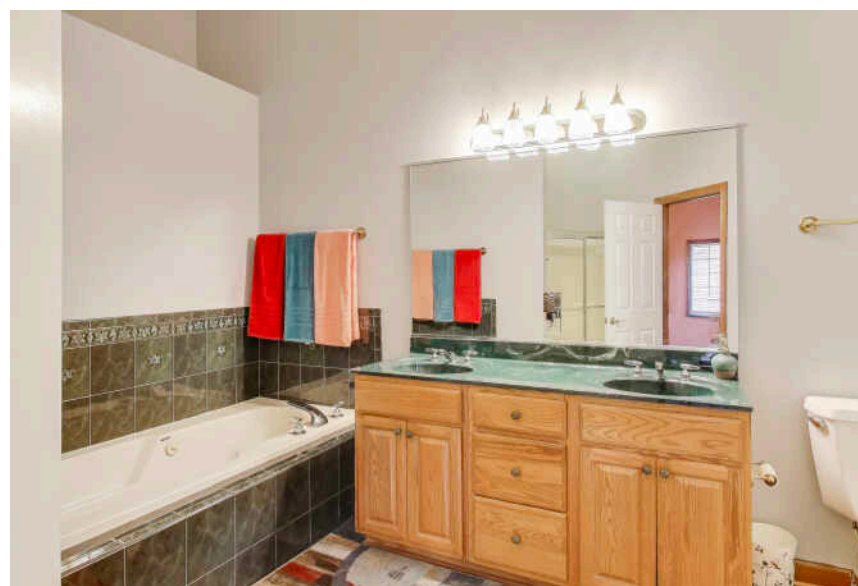
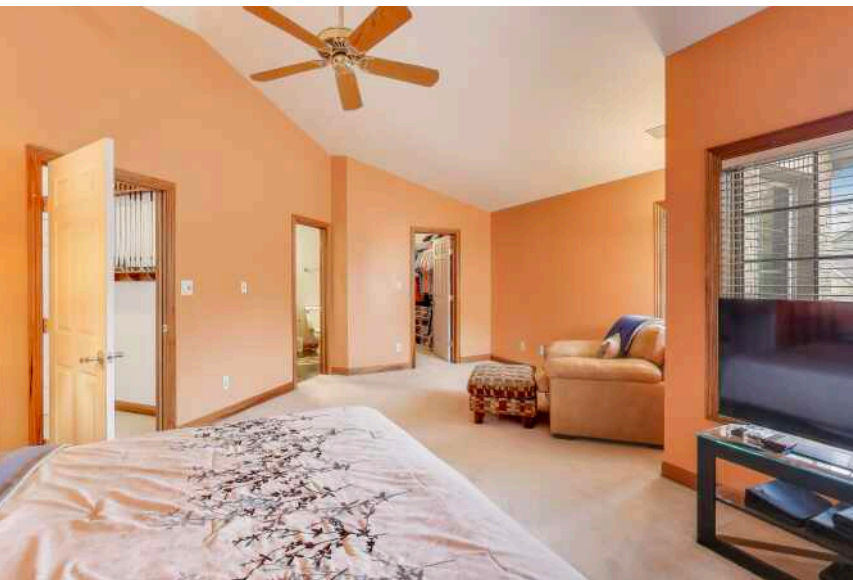
## BEAUTIFUL SPACIOUS MUNSTER TOWNHOME

SPACE! Room to grow, work from home, enjoy hobbies or gather together. This home has SPACE for all. Enter the warm welcoming living room with 2 Story ceilings, decorator ledge, oversized windows streaming natural light, Gas fireplace as well. The dining area has sliding doors that open up to the new composite deck. Kitchen offers pantry cabinet, stainless steel appliance package with brand new dishwasher, over range microwave, newer range and the main floor laundry has brand new washer and dryer. There is also a generously sized main floor bedroom and full bath. Upstairs you will find a huge primary suite with sitting area, walk in closet, and an ensuite bath that has walk in shower and jetted tub as well as double sink. This home has a second primary with TWO large closets and full bathroom with linen cabinet. The lower level has an extra large rec room with a pool table that owners will leave. There is another room that can flex to be a home office, craft room, or whatever you need. Full bath on this floor as well. Here you will also find amazing storage SPACE with built in shelving. The new hot water heater and well maintained furnace (recently fully serviced). Central AC was replaced 2020. Two and a half car attached garage. Lawn maintenance and snow removal included in fees.

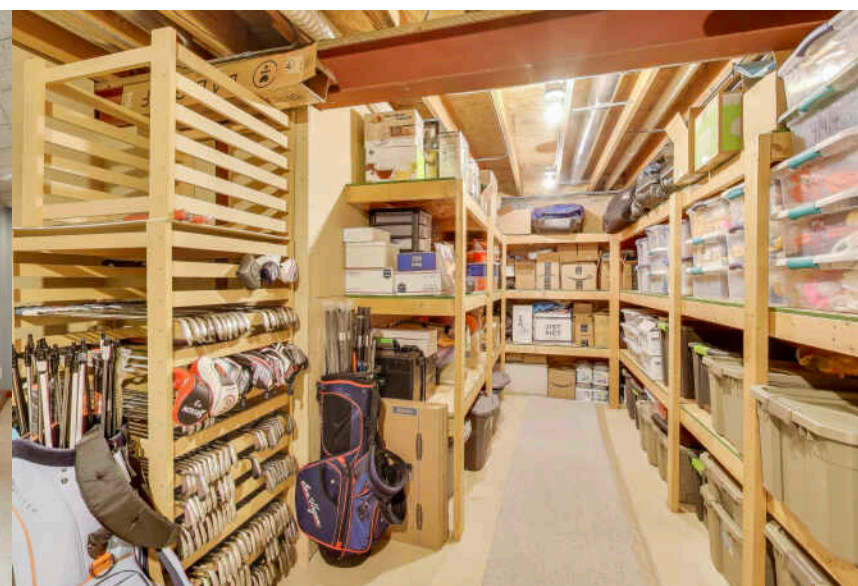
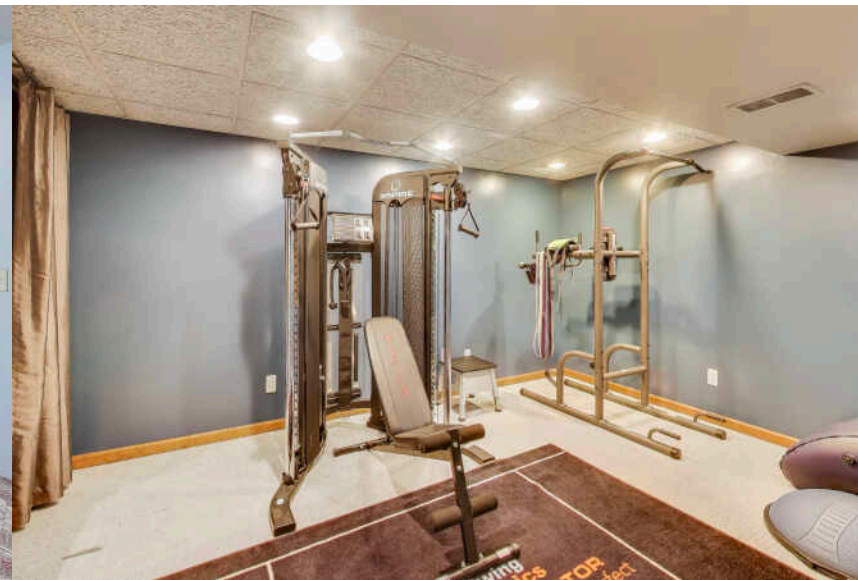
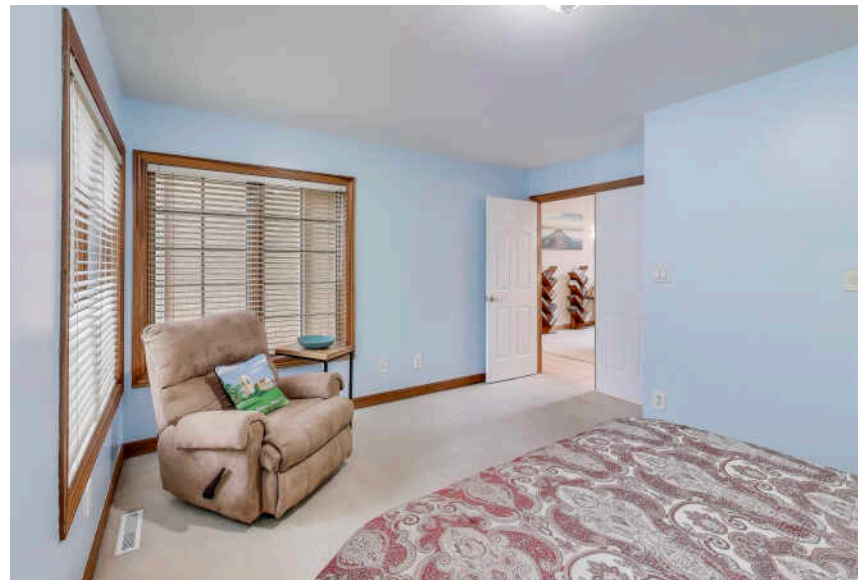




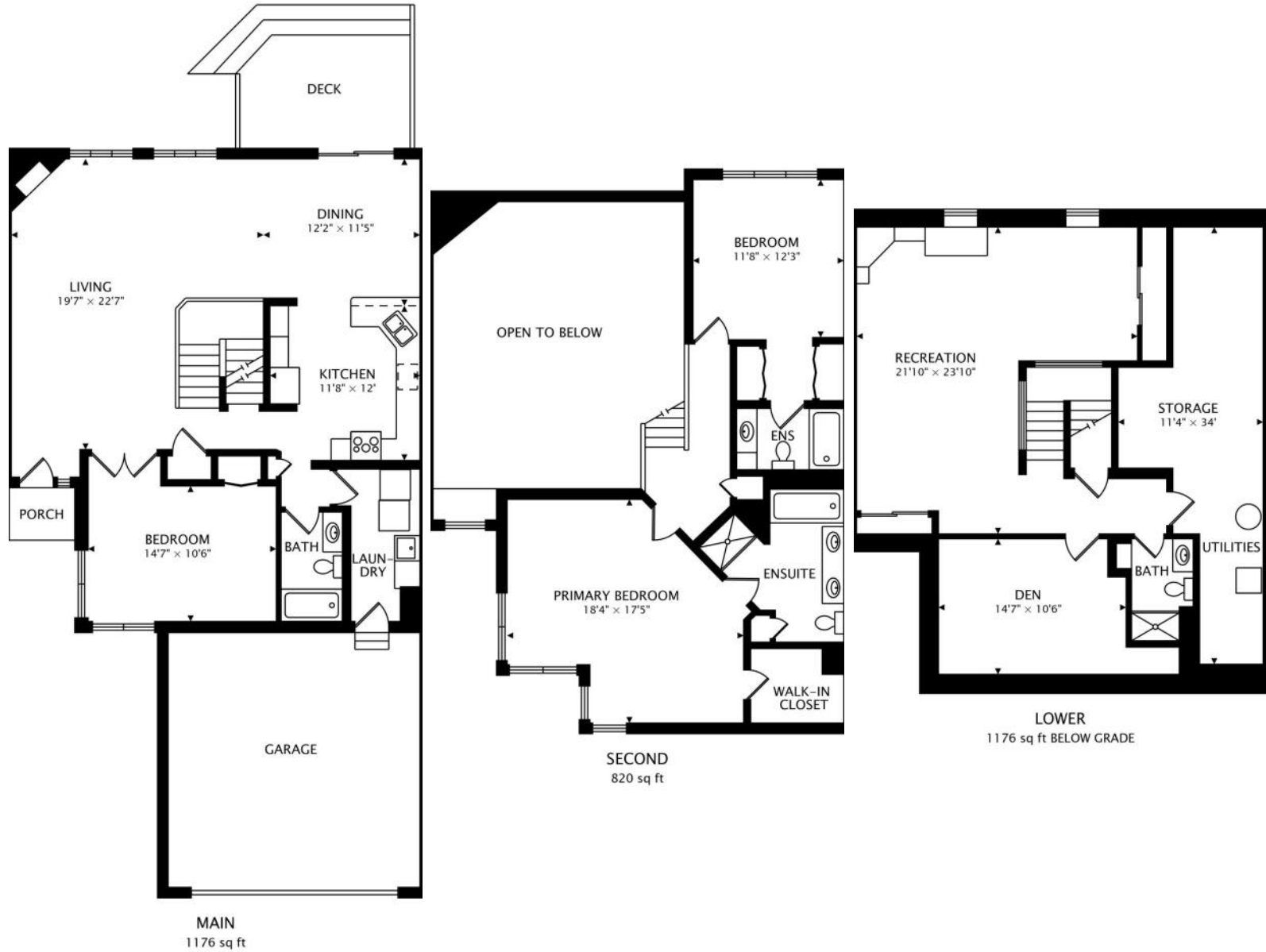












NOTES \_\_\_\_\_

\_\_\_\_\_

\_\_\_\_\_

\_\_\_\_\_

\_\_\_\_\_

\_\_\_\_\_

\_\_\_\_\_

\_\_\_\_\_

\_\_\_\_\_

\_\_\_\_\_

\_\_\_\_\_



## LINDA WIECHNIK-GOBLE

1 2199738040

2195312288

LINDAGOBLE@ATPROPERTIES.COM



All specifications, features, designs, price, assessments, taxes and materials are subject to change without notice. Depicted floor plans and architectural renderings are only an artist's impression.

