

1618 N NATOMA AVENUE
GALEWOOD



@properties®

CHRISTIE'S
INTERNATIONAL REAL ESTATE



ROOM DIMENSIONS

LIVING ROOM : 22' x 13'

FAMILY ROOM : 22' x 19'

DINING ROOM : 12' x 13'

KITCHEN : 10' x 13'

PRIMARY BEDROOM : 16' x 11'

SECOND BEDROOM : 12' x 13'

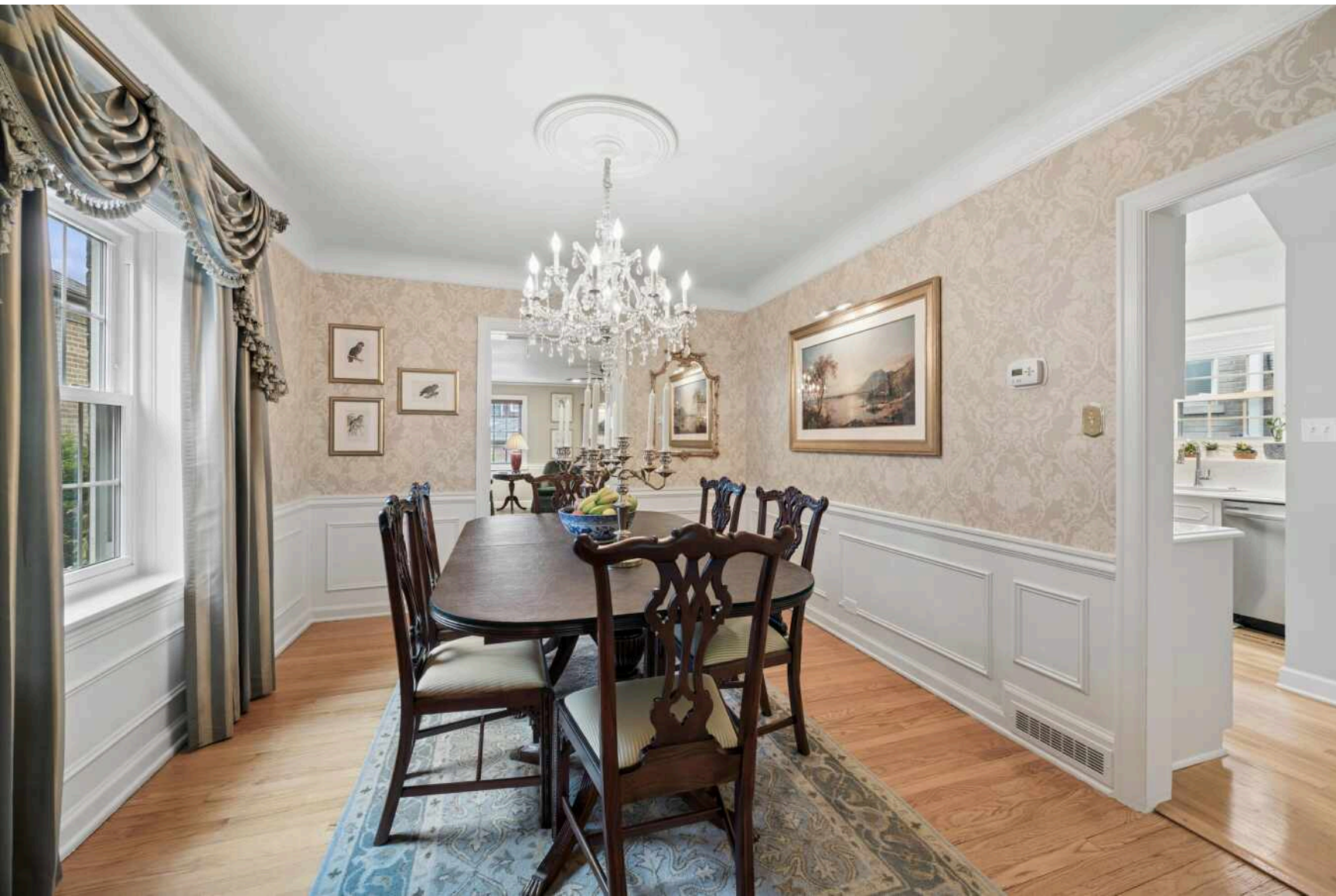
THIRD BEDROOM : 9' x 9'

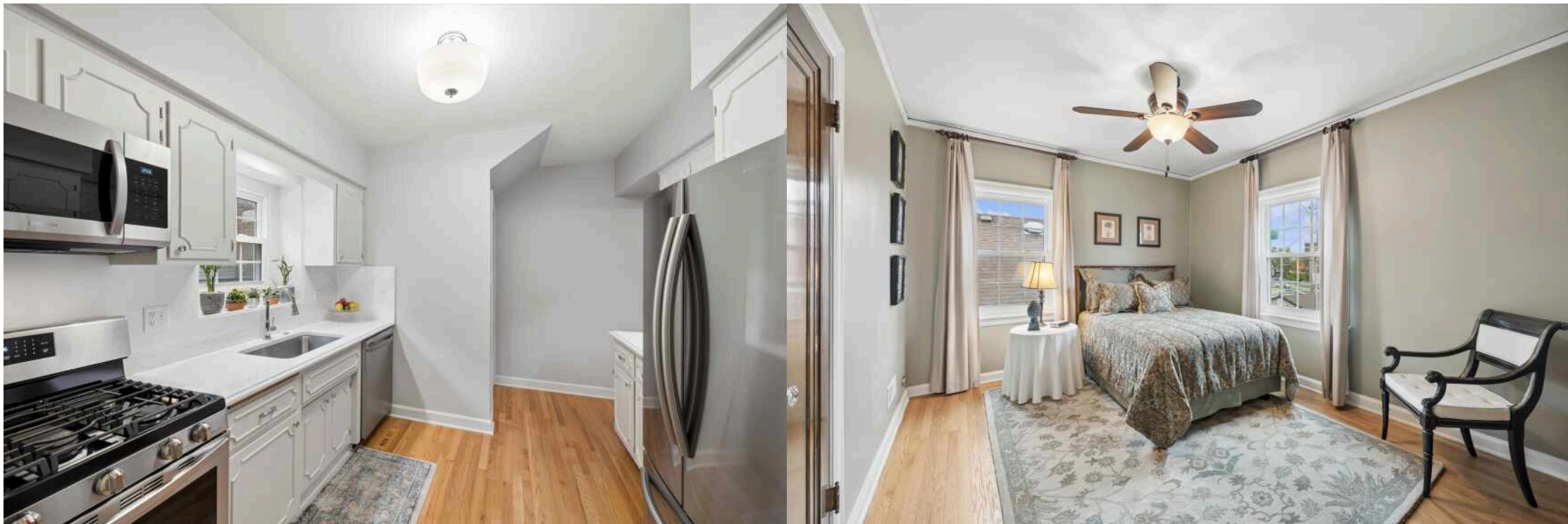
3 BEDROOM

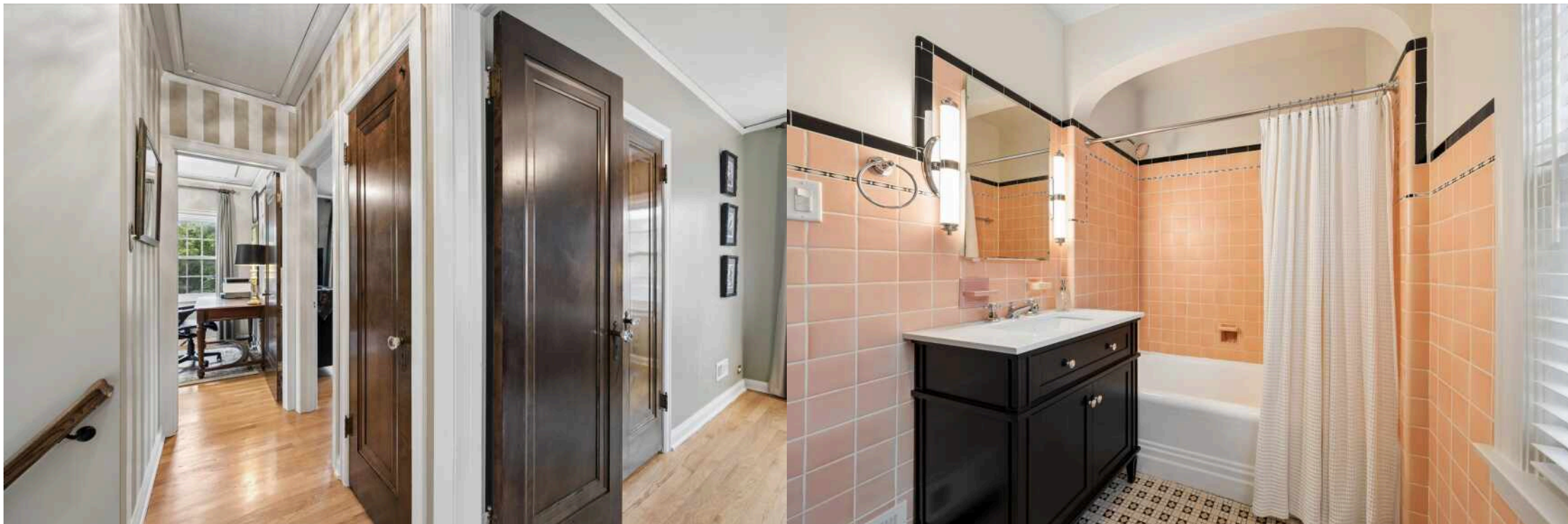
1.1 BATH

TAXES: \$6,573.31

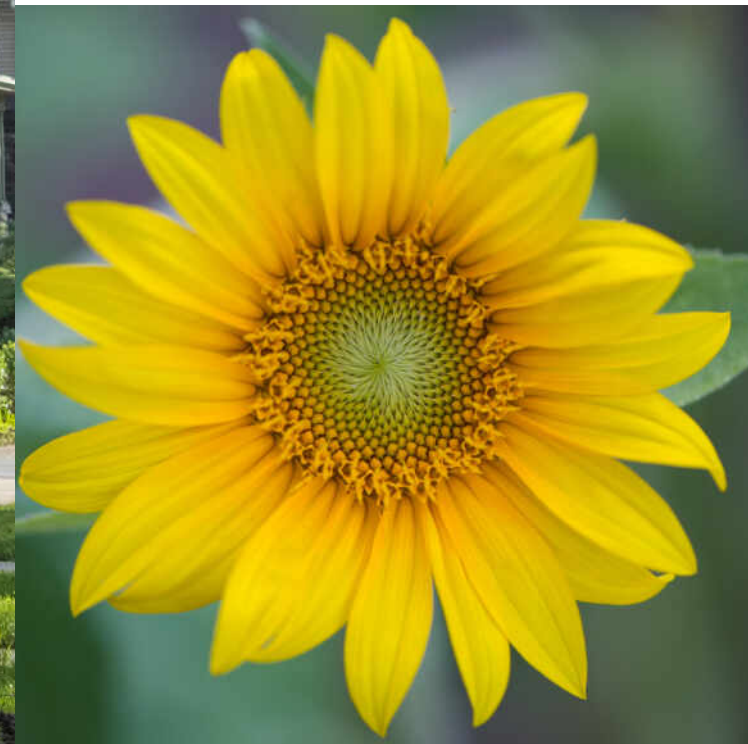
Experience the perfect blend of classic architectural charm and modern luxury in this meticulously maintained all-brick Georgian located in Chicago's sought-after Galewood neighborhood. This exceptional 3-bedroom, 1.1-bath home showcases a breathtaking English garden oasis featuring sculpted boxwoods, winding grass pathways, lush seasonal blooms, and a fully fenced yard designed for peaceful outdoor living and entertaining. Step inside to discover refined interiors filled with warmth and character. The beautifully updated kitchen features elegant quartz countertops, a full-height quartz backsplash, stainless steel appliances, and custom cabinetry. Gleaming hardwood floors extend throughout most of the home, including the formal dining room and all three spacious second-floor bedrooms. The expansive first-floor family room features plush carpeting and abundant natural light, making it the perfect gathering space. The inviting formal living room centers around a classic wood-burning fireplace, while the updated bathrooms include a refreshed full bath on the second level and a charming powder room on the main floor. The finished lower level offers additional living space, including a large recreation room, a laundry area, ample storage, and a convenient basement restroom. Enjoy the best of "suburban living in the city" with convenient access to everything: * Minutes from the Galewood Metra Station with direct access to Downtown Chicago * Close to multiple public transportation options * Near the historic 56-acre Riis Park featuring a lagoon, running track, and fieldhouse * Conveniently located near the North Avenue and Harlem Avenue shopping and dining corridors, including Whole Foods, Starbucks, Jewel-Osco, and the Brickyard Shopping Center * Just moments from neighboring Oak Park's boutiques and acclaimed restaurants while benefiting from Chicago taxes Complete with a 2-car garage, outstanding curb appeal, and situated on a quiet tree-lined street. This turnkey home is truly one of Galewood's finest offerings. A rare combination of timeless elegance, thoughtful updates, and extraordinary outdoor space, beautifully maintained and sold As-Is, this home won't last long-claim it as yours before it's gone!











LOCATED ON CHICAGO'S FAR WEST SIDE, **GALEWOOD** IS A SMALL RESIDENTIAL NEIGHBORHOOD KNOWN FOR ITS BUNGALOW-LINED STREETS AND COHESIVE HOUSING STOCK.

Developed primarily in the early 20th century, the area features well-preserved homes that reflect classic Chicago architectural styles.

Galewood benefits from its proximity to neighboring Oak Park and Elmwood Park, providing convenient access to retail centers, dining, and transit options. The neighborhood is also near several parks and forest preserves, offering nearby outdoor amenities.

Its location and residential character make Galewood a distinctive and close-knit part of the city's western edge.



TOTAL: 2190 sq. ft
 Basement: 576 sq. ft, 1st floor: 1041 sq. ft, 2nd floor: 573 sq. ft
 EXCLUDED AREAS: STORAGE: 31 sq. ft, FIREPLACE: 11 sq. ft, WALLS: 174 sq. ft

Floor Plan Created By Cubicasa App. Measurements Deemed Highly Reliable But Not Guaranteed.





URAI CHIYA

(224) 478-8934

(224) 615-9459

UCHIYA@ATPROPERTIES.COM

WWW.ATPROPERTIES/AGENTS/4633/URAICHIYA

