

161 E CHICAGO AVENUE #39B
STREETERVILLE





ROOM DIMENSIONS

LIVING ROOM : 20' × 17'

DINING ROOM : 14' × 15'

KITCHEN : 18' × 09'

PRIMARY BEDROOM : 20' × 15'

SECOND BEDROOM : 17' × 11'

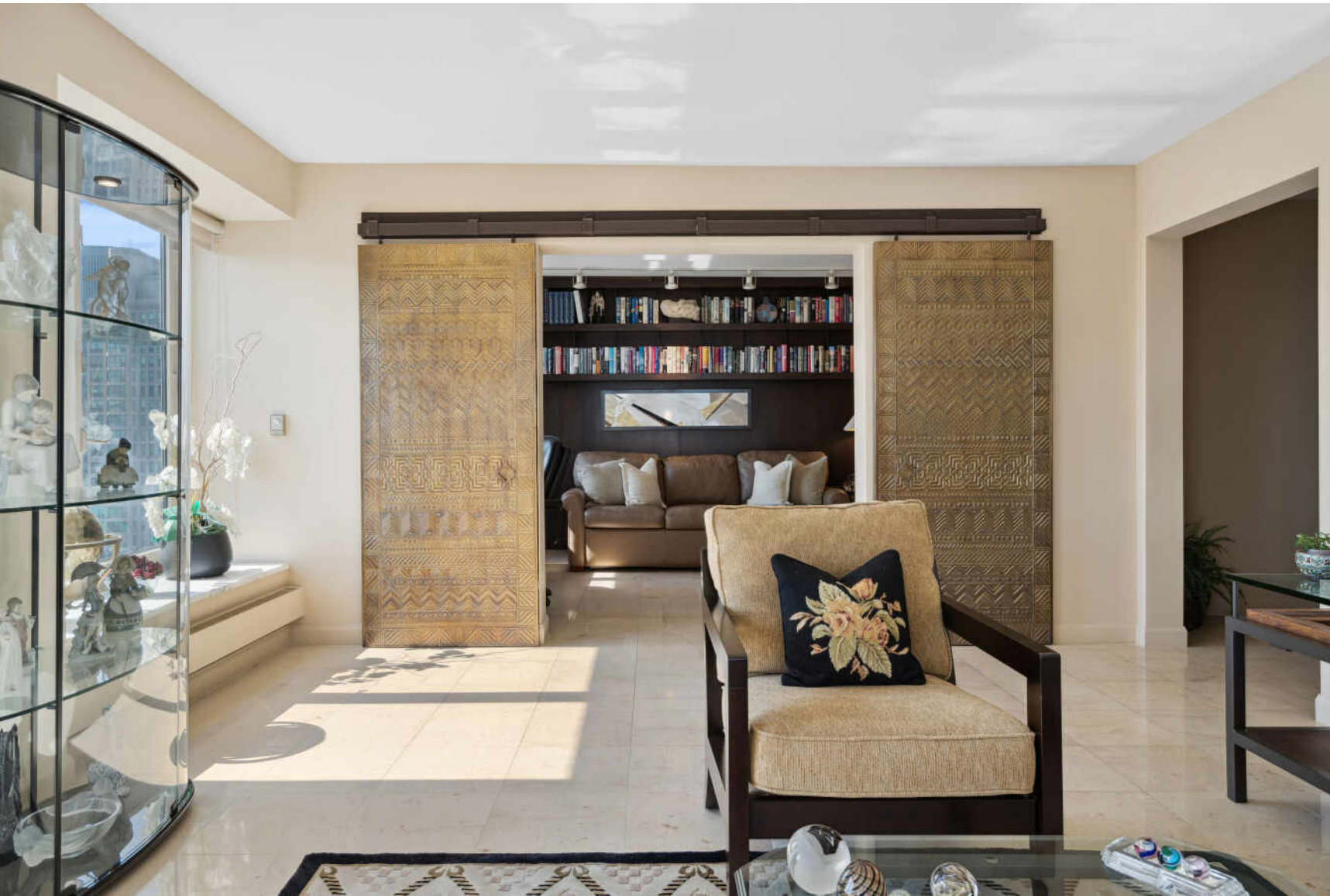
We Love this Preferred SouthEast Corner layout! Enjoy this beautiful 2-bedroom, 2.1 bath unit with dynamic lake and city views located in the Olympia Centre steps away from the Mag Mile and Lake Michigan. This iconic neighborhood and building offer top amenities and service. This southeast corner unit offers the best exposure in the building. Highlights include a gracious entry way, a large kitchen with generous storage, also provides great space for in kitchen dining and gracious counter space. This spacious condo has a generous size living area that offers a wall of windows throughout, allowing plenty of natural light. The primary bedroom suite boasts three walk-in closets, a full bathroom with dual sinks, a separate shower, and a tub. The second bedroom has been converted into an office with custom built-ins and shelving. This versatile space can serve as a home office or guest room. A large laundry room comes equipped with side-by-side washer and dryer and great storage. The Olympia Centre offers a range of amenities, including 24/7 door staff, lobby concierge, an indoor pool, spa, two exercise rooms, an entertainment room, and a rooftop deck. Monthly parking is available onsite, providing convenient parking options.

2 BEDROOM

2.1 BATH

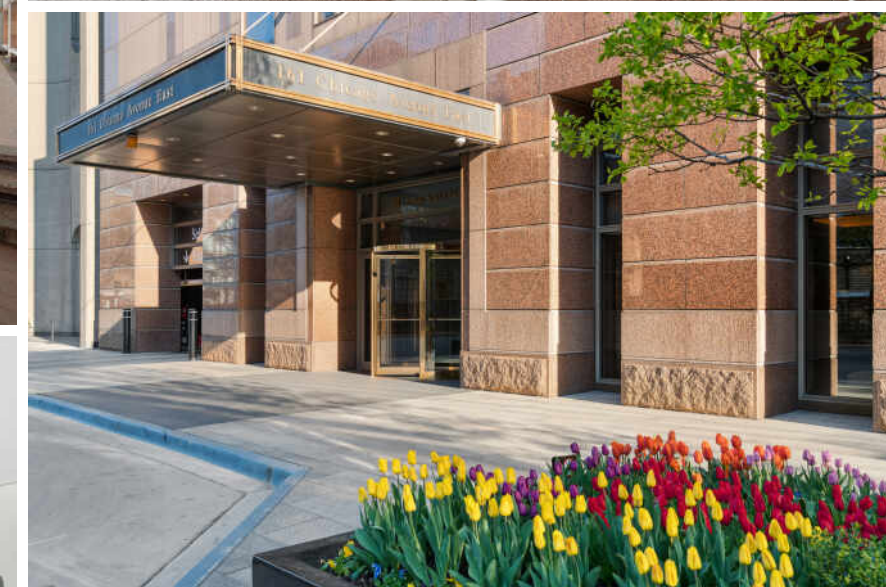
TAXES: \$15,484

ASSESSMENTS: \$1,771 / MONTH











MAJOR DEVELOPMENT IN RECENT YEARS HAS PUT **STREETERVILLE** ON THE MAP.

In the past two decades alone, dozens of new buildings, high-rises, hotels, stores, and institutions have sprung up, bringing with them a flock of residents to the high-energy community.

A wide range of housing is available, the majority in high-rise buildings. The neighborhood's stunning array of architecture includes pre-war buildings, a collection of Mies van der Rohe buildings, and iconic buildings like 875 North Michigan Avenue (known as the John Hancock Center). New construction and smaller mid-rise buildings can be found throughout the neighborhood as well.

Streeterville is home to notable attractions such as The Magnificent Mile, Water Tower Place, and the Museum of Contemporary Art. It is also home to Northwestern Memorial Hospital's state-of-the-art medical campus and the downtown campuses of Northwestern University and the University of Chicago.

While the neighborhood offers a number of smaller "pocket" parks and playgrounds, the lakefront is the center of attention, and it's never more than a couple of blocks away. While dining out is easy, deciding where to go with so many great restaurant options is not.

Residents have easy access to surrounding areas via the CTA's Red Line and numerous buses that run up and down Michigan Avenue.



MARGARET BACZKOWSKI

M: 312-371-8379

O: 312-500-5178

MB@MBLUXURYGROUP.COM

MBLUXURYGROUP.COM



MB LUXURY GROUP

Luxury Home Services

@properties®

CHRISTIE'S
INTERNATIONAL REAL ESTATE