



161 E CHICAGO AVENUE #53A STREETERVILLE



@properties | CHRISTIE'S
INTERNATIONAL REAL ESTATE

LUXURY
PORTFOLIO
INTERNATIONAL



JENNIFER PIET BROKER

773.544.7653 mobile
773.432.0200 office
jenniferpiet@atproperties.com
www.PietProperties.com

PIET
Sell it. Buy it. Results with Piet.

161 E CHICAGO AVENUE #53A • STREETERVILLE





161 E CHICAGO AVENUE #53A LUXURY SKY HIGH LIVING WITH PANORAMIC VIEWS!

ROOM DIMENSIONS

Living Room	18'x13'
Dining Room	13'x13'
Kitchen	21'x12'
Primary Bedroom	20'x14'
Second Bedroom	16'x16'
Third Bedroom	18'x10'
Foyer	20'x7'
Breakfast Nook	12'x7'
Walk in Closet	14'x7'

FEATURES

A home in the sky with sweeping city & lake views! Perched high on the 53rd floor, this stunning corner residence has a wall of windows showcasing views of Navy Pier, Lake Michigan and the glittering Chicago skyline. Recently reimagined with a sleek, open-concept design, the luxurious kitchen is the centerpiece of the home. Start your mornings with an espresso from the built-in Miele cafe station, cook with a view from your Wolf induction cooktop and unwind with a bottle from the full-height beverage fridge. The primary suite basks in the glow of sunrises and sunsets over Navy Pier. Experience true luxury in this expansive master suite, featuring 2 newly rehabbed en-suite bathrooms adorned with timeless marble tile finishes, white oak vanities, a giant soaker tub and walk-in shower. It also features two spacious walk-in closets, along with a dedicated sitting room that frames breathtaking views of Navy Pier and Lake Michigan. The versatile third bedroom is designed with flexibility in mind, featuring a custom retractable wall that seamlessly ticks away into the wall. The Olympia Center embodies luxury life style experience with 24-hour door staff, indoor pool, whirlpool, sauna, steam room, party room, and on-site management. Parking is available for lease in the attached heated garage. Living here is a life style to love!

- Taxes: \$22,275
- HOA: \$2540



JENNIFER PIET BROKER

773.544.7653 mobile
773.432.0200 office

jenniferpiet@atproperties.com
www.PietProperties.com

PIET

Sell it. Buy it. Results with Piet.









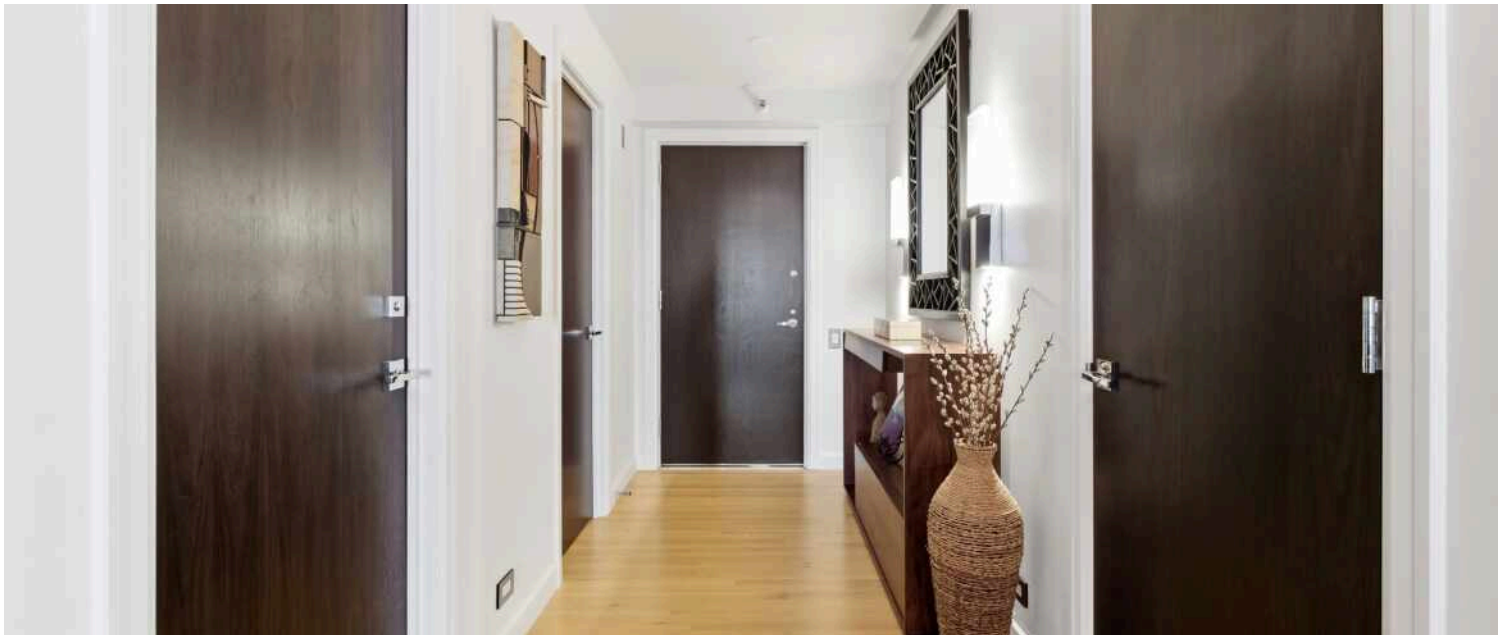
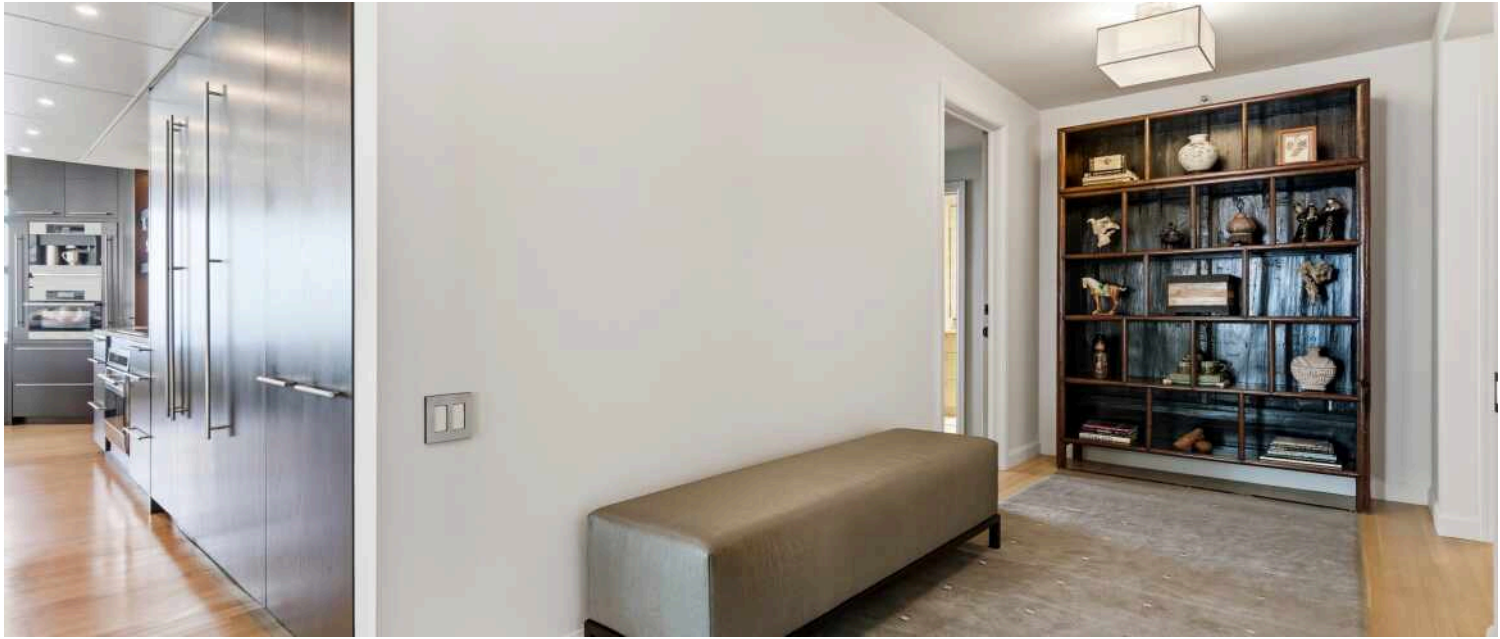










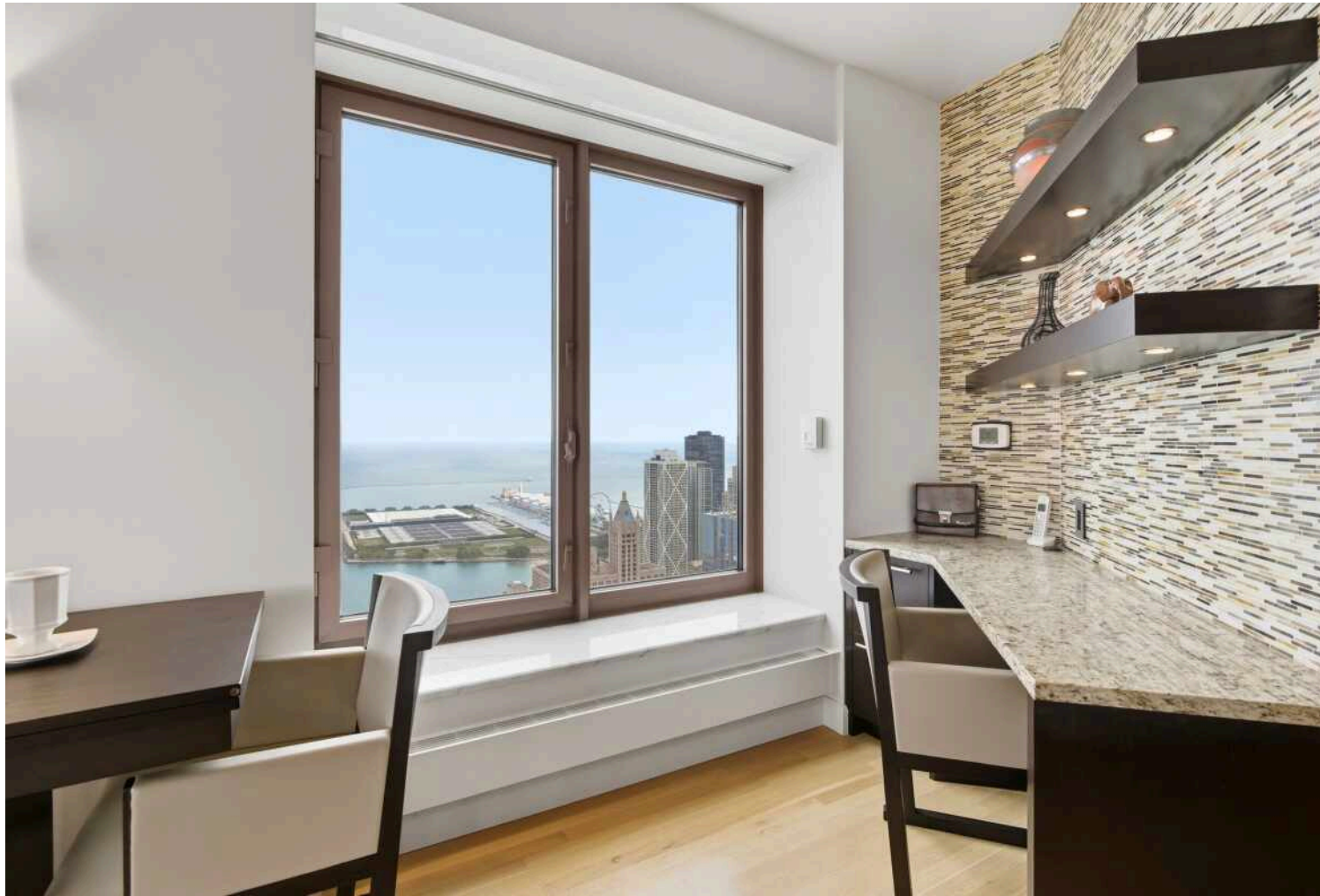
















MAJOR DEVELOPMENT IN RECENT YEARS PUT **STREETERVILLE** ON THE MAP.

Locals love the neighborhood's proximity to the beach, lakefront paths, and world-class shopping, dining, and entertainment. Streeterville is also home to some of the city's renowned architecture.

In the past two decades alone, dozens of new buildings, high-rises, hotels, stores, and institutions have sprung up, bringing with them a flock of residents to the high-energy community.

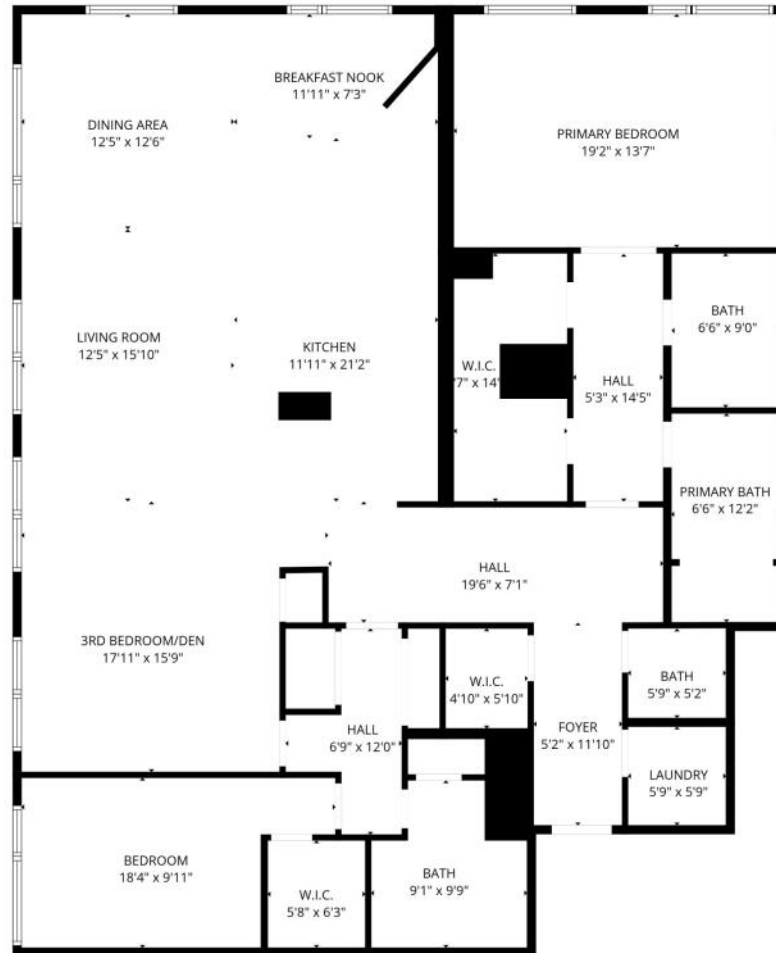
A wide range of housing is available, the majority in high-rise buildings. The neighborhood's stunning array of architecture includes pre-war buildings, a collection of Mies van der Rohe buildings, and iconic buildings like 875 North Michigan Avenue (known as the John Hancock Center). New construction and smaller mid-rise buildings can be found throughout the neighborhood as well.

Streeterville is home to notable attractions such as The Magnificent Mile, Water Tower Place, and the Museum of Contemporary Art. It is also home to Northwestern Memorial Hospital's state-of-the-art medical campus and the downtown campuses of Northwestern University and the University of Chicago.

While the neighborhood offers a number of smaller "pocket" parks and playgrounds, the lakefront is the center of attention, and it's never more than a couple of blocks away. While dining out is easy, deciding where to go with so many great restaurant options is not.

Residents have easy access to surrounding areas via the CTA's Red Line and numerous buses that run up and down Michigan Avenue.





FLOOR PLAN CREATED BY CUBICASA APP. MEASUREMENTS DEEMED HIGHLY RELIABLE BUT NOT GUARANTEED.

