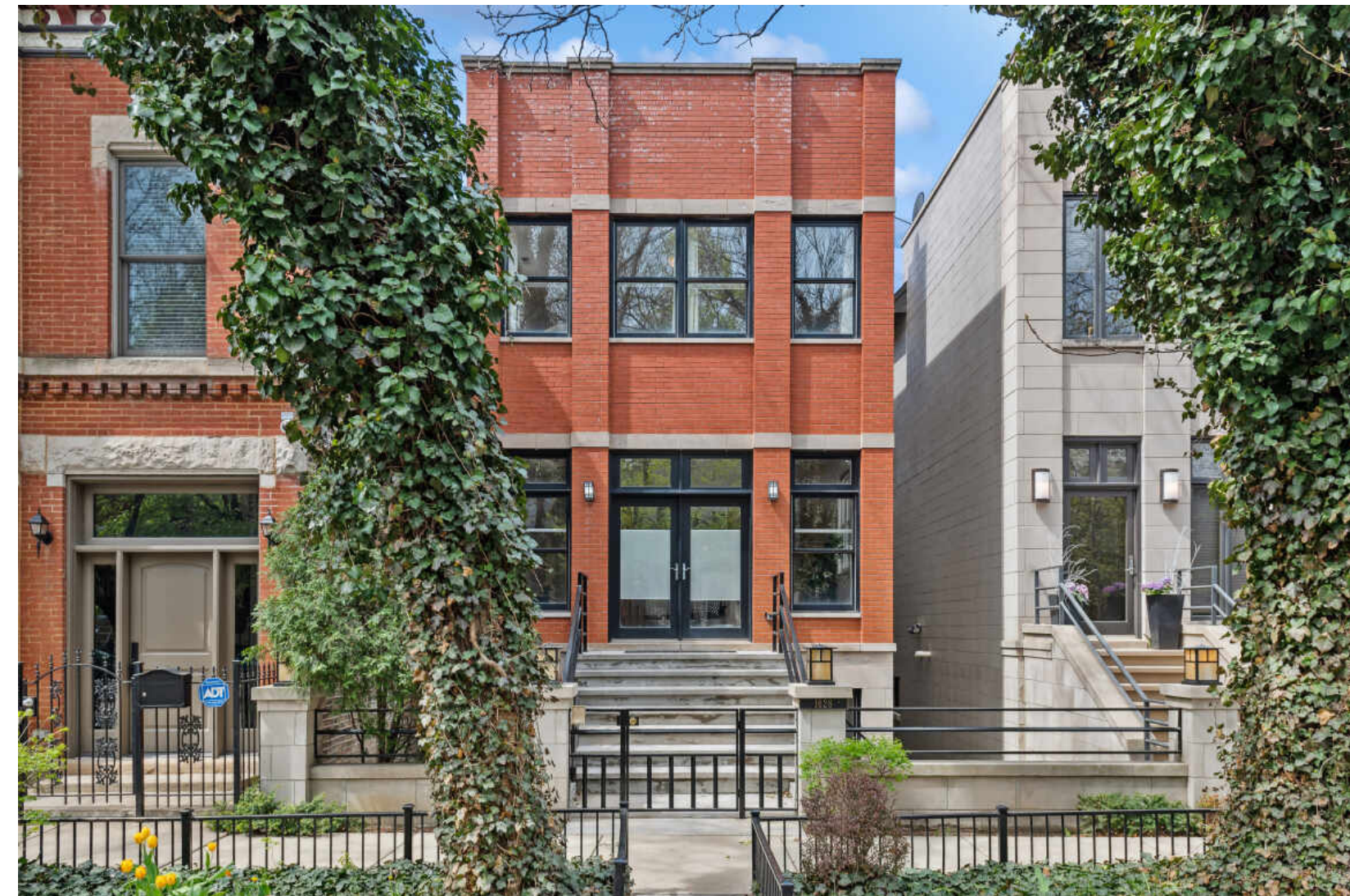




1628 N HERMITAGE BUCKTOWN



1628 N HERMITAGE • BUCKTOWN
1628HERMITAGE.INFO

@properties | CHRISTIE'S
INTERNATIONAL REAL ESTATE

LUXURY
PORTFOLIO
INTERNATIONAL



JANELLE DENNIS REAL ESTATE CONSULTANT

773.255.7751 mobile
janelledennis@atproperties.com
www.janelledennis.com

JANELLE DENNIS
REALTOR

1628 N HERMITAGE • BUCKTOWN
1628HERMITAGE.INFO





1628 N HERMITAGE AVENUE

FEATURES

- Beautiful Bucktown home with modern open layout, 4,000 sf, large rooms, 4 outdoor spaces including 2 roof decks, 5 bedrooms, 3 1/2 bathrooms on full size lot and desirable tree-lined street near the 606, shopping, restaurants and multiple parks and playlots.
- Wall of windows in the front look to a green tree-lined street and provide great light. The spacious front living room features a floor-to-ceiling, marble-surround gas fireplace and view of a dramatic floating center staircase. The dining area easily fits a large table with space for buffet or bar, and hardwood floors throughout.
- The chef's kitchen has walnut stained cabinets, island for barstools, a butler pantry/desk, granite counters, SubZero, Dacor, Bosch stainless steel appliances & wine refrigerator. Eat-in table looks out through a wall of windows & door to the back deck, brick paver patio with fountain and a garage roof deck.
- The 2nd floor has 3 spacious bedrooms, 2 bathrooms & laundry. Primary suite is filled with west sunlight, soaring cathedral ceilings, & attached marble bathroom with double vanity, jacuzzi tub, and glass shower with rainshower, body sprays and built in bench.
- Top floor den with wet bar off the rooftop deck is a great extra family room, kids play room, or home office space and has a huge storage room. The rooftop deck offers great relaxing and entertaining possibilities among the treetops.
- Lower level has travertine tile floors, carpet in the huge 4th bedroom with full size windows. 5th bedroom is a fitness room, 2nd laundry room has side-by-side w/d, and the large family room offers a wet bar and wall of windows & door to the brick patio.



JANELLE DENNIS REAL ESTATE CONSULTANT

773.255.7751 mobile

janelledennis@atproperties.com
www.janelledennis.com



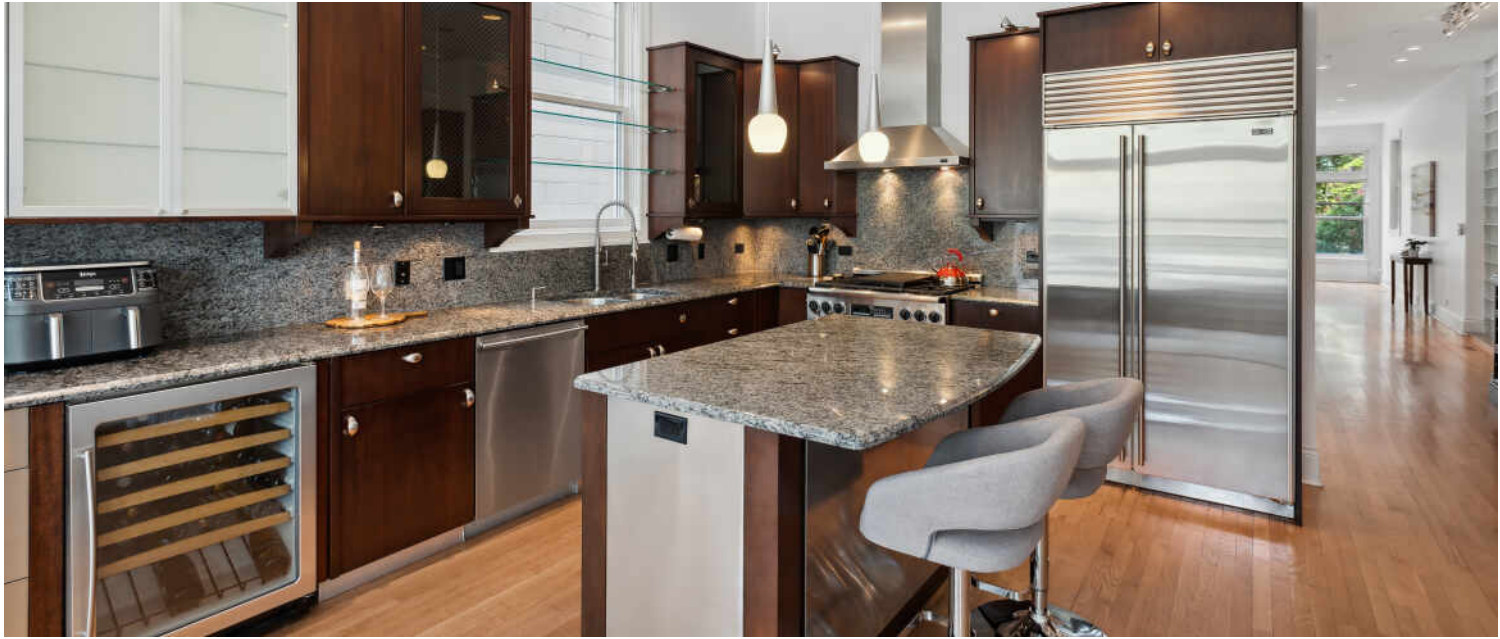


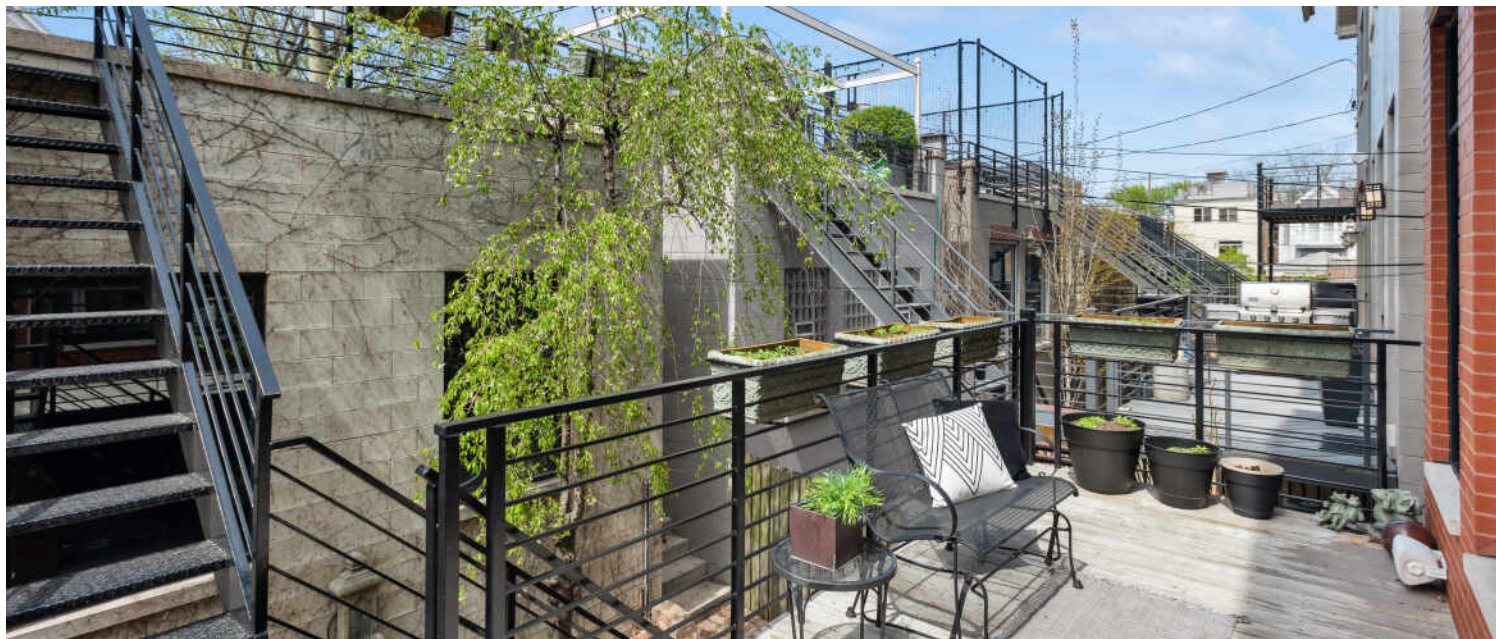
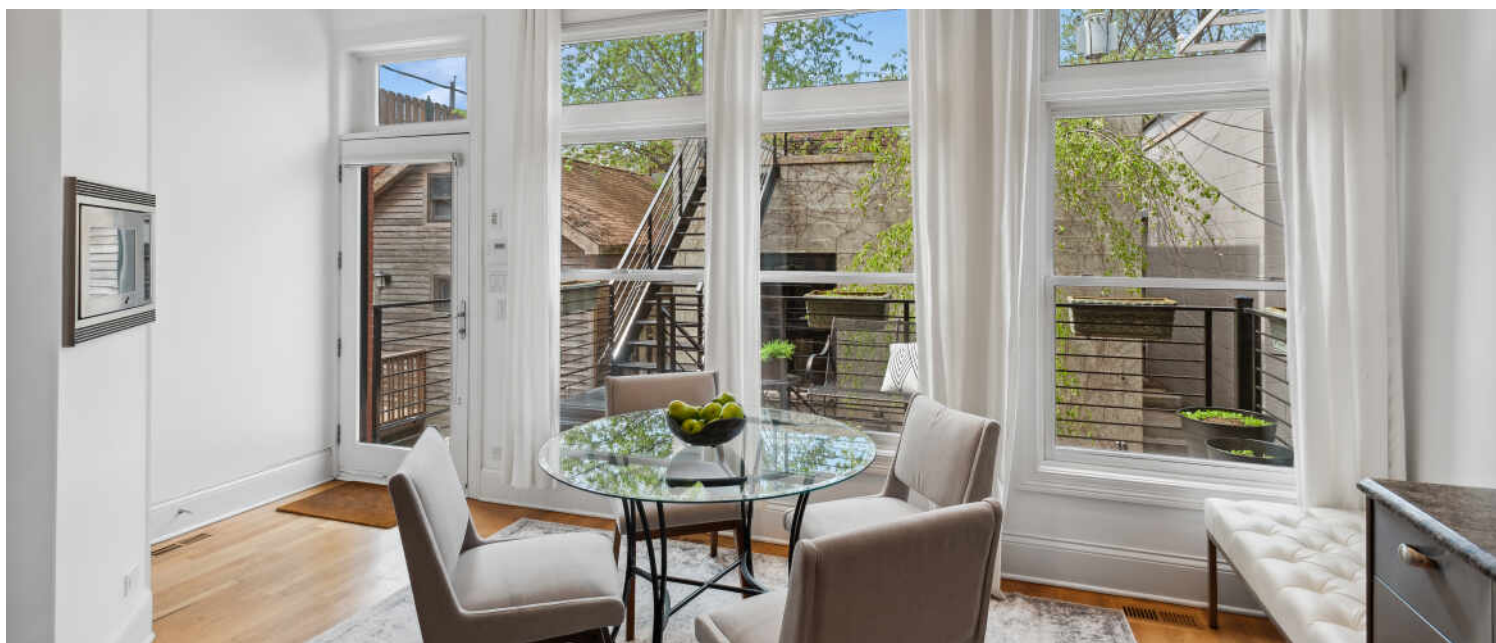








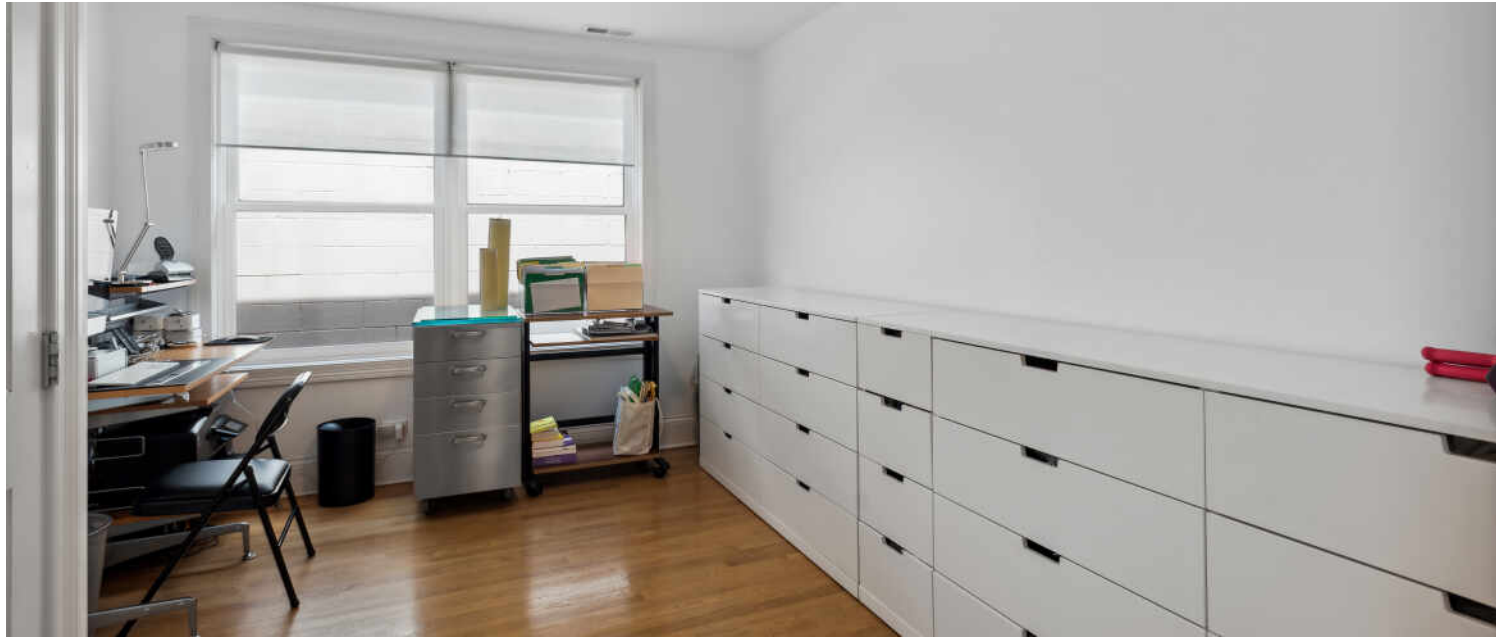




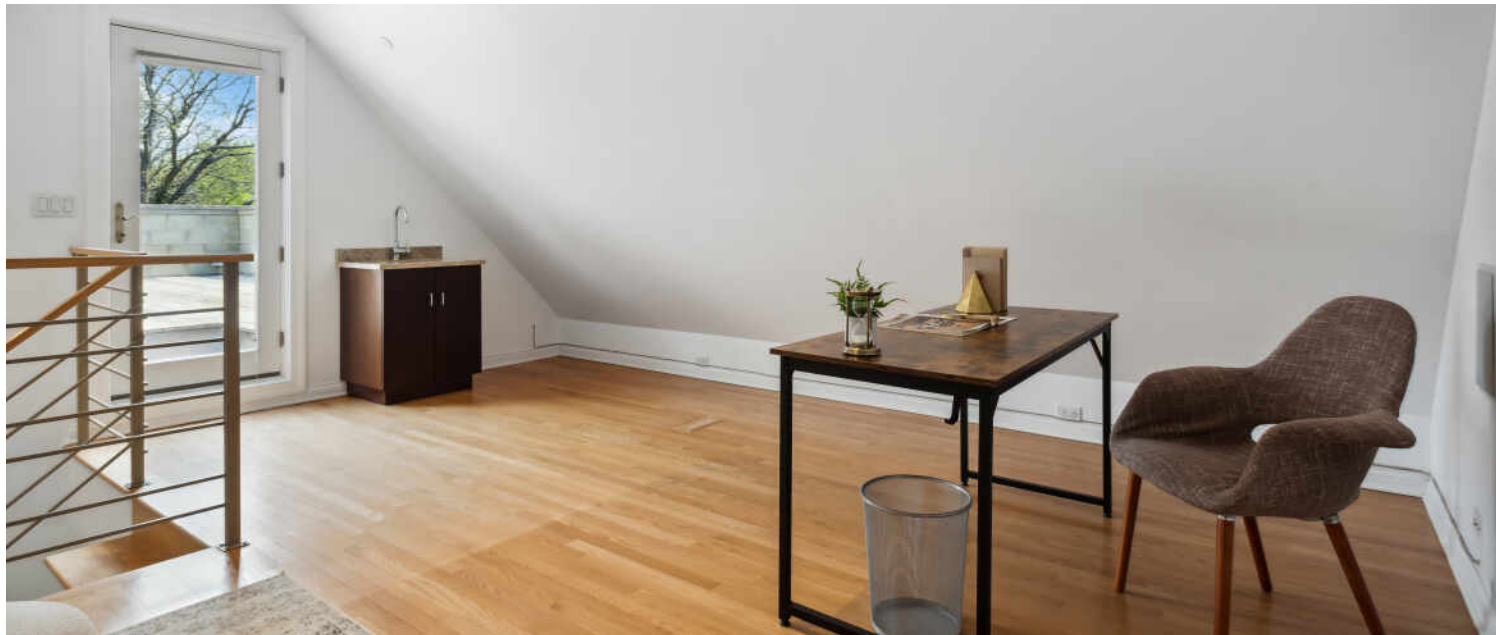




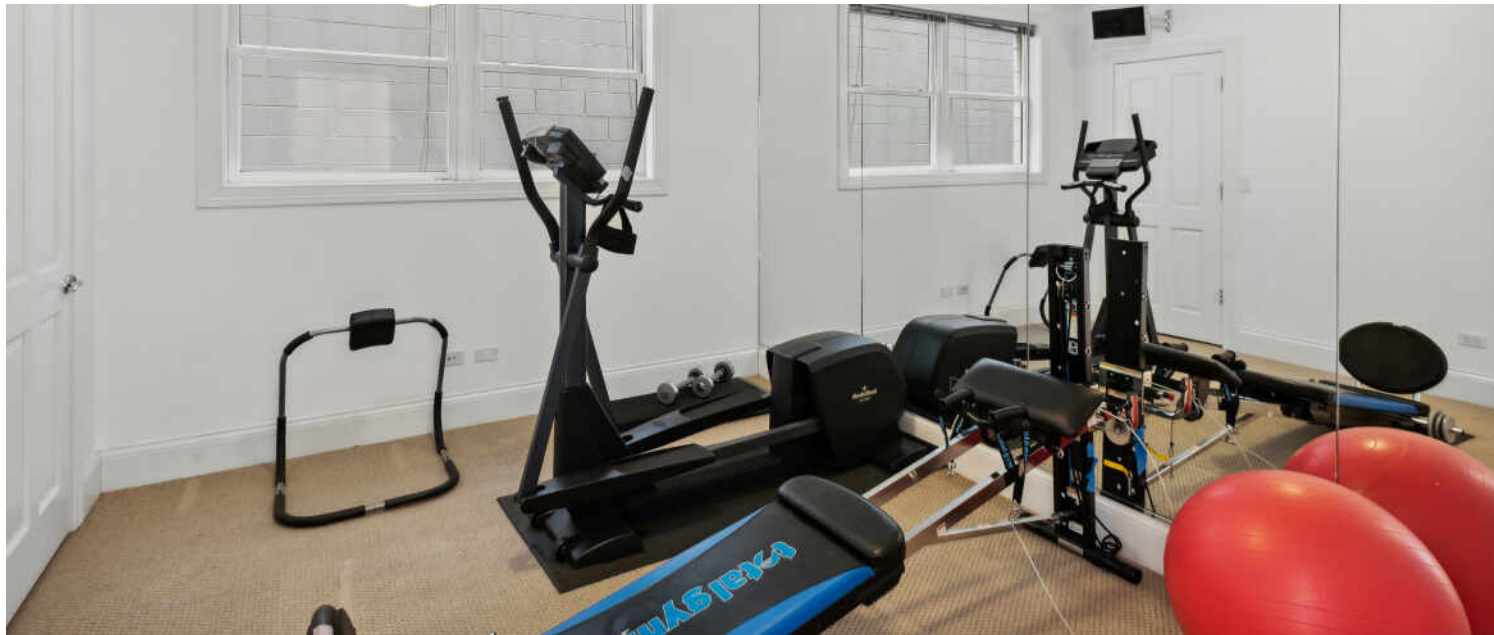










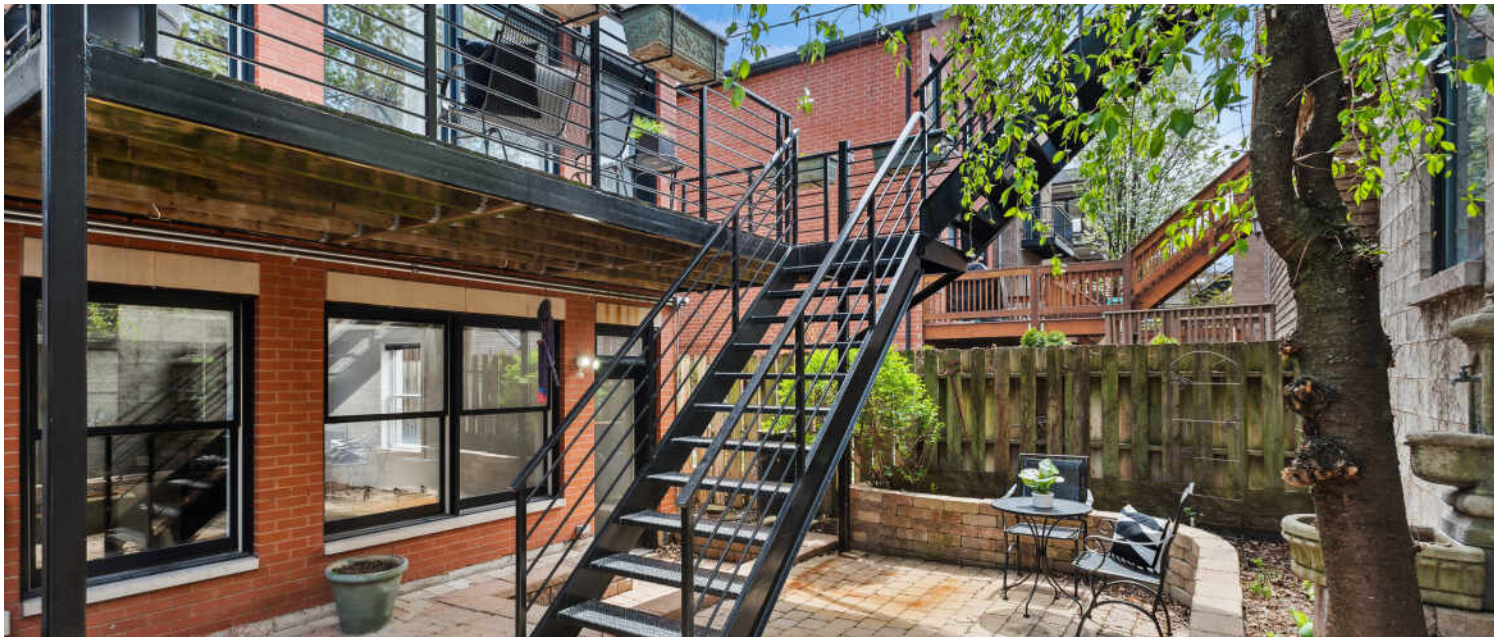








© VHT STUDIOS





@properties® | CHRISTIE'S
INTERNATIONAL REAL ESTATE

Leading REAL ESTATE
COMPANIES
OF THE WORLD®

LP
LUXURY
PORTFOLIO
INTERNATIONAL®

