

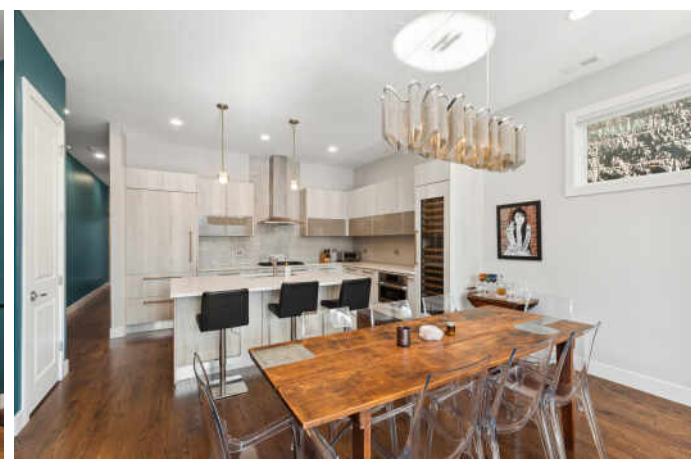
1630 W LEMOYNE STREET #2
WICKER PARK



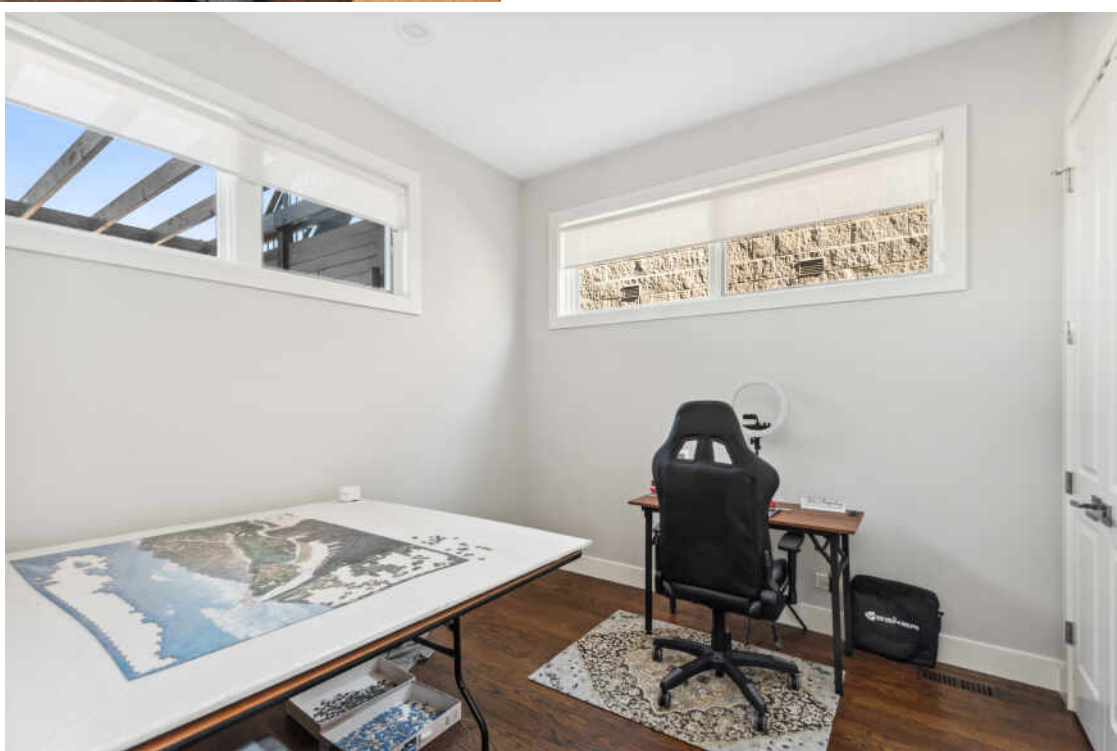
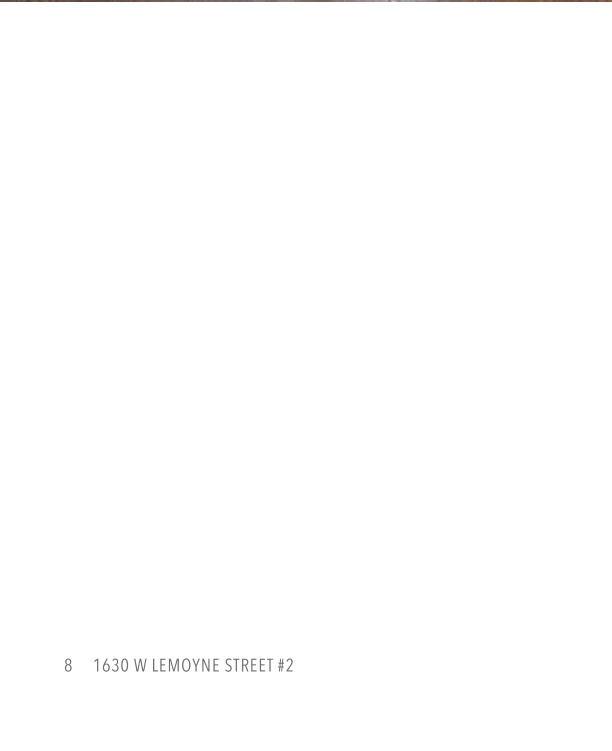


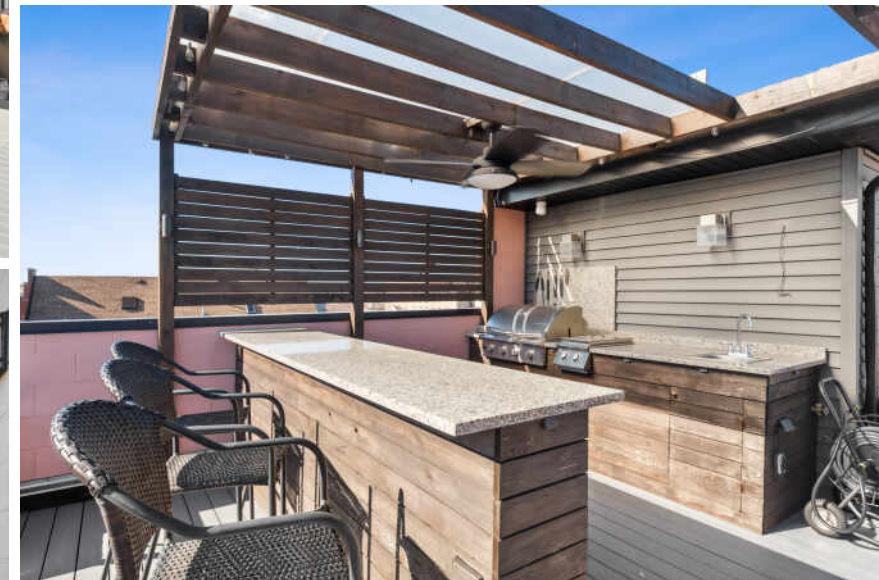
TAXES: \$13,935
ASSESSMENTS: \$226 / MONTH

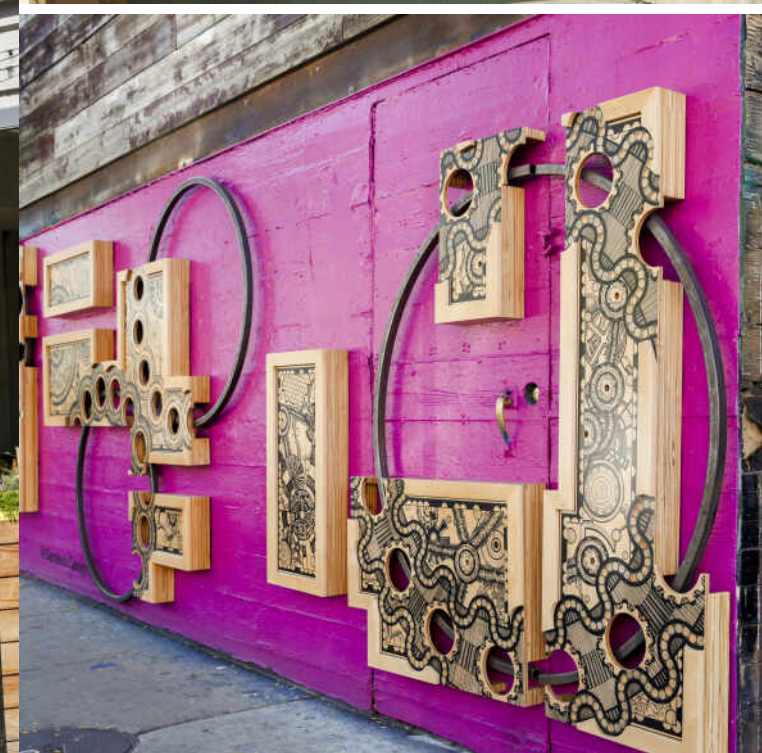
Gorgeous modern remodeled, 3bed 3 bath duplex up in hot Wicker Park, 3 decks (one on each level) with approximately 1000sqft of outdoor space. Check out the city skyline from your huge roof deck with composite decking, built in planter, outdoor kitchen and a gas fire table. The beautiful built-in kitchen is complete with gas grill, sink, beverage fridge, granite bar with bar stools, and a pergola. Interior of this bespoke home boasts 8' solid core doors, hardwood espresso floors throughout, and a large living room and dining area perfect for entertaining with massive south facing windows, newly 2020 remodeled designer kitchen by Avanti Galleries includes Bosch commercial grade appliances and SubZero fridge, wine chiller, Italian glass cabinetry and quartz countertops and pantry closet, light filled primary bedroom has 8x5 walk in closet. newly 2020 remodeled master bath with custom quartz and stone detailing includes oversized steam shower with body sprays, double vanity and hi-end hardware, remaining two baths newly remodeled with Italian cabinetry and brushed gold hardware, designer Lightology lighting throughout, custom fitted closets, garage parking included











RESIDENTS AND BUSINESSES FLOCKED TO **WICKER PARK** TO REBUILD AFTER THE GREAT CHICAGO FIRE OF 1871. TODAY, CHICAGOANS FLOCK TO THE HIP, HAPPENING NEIGHBORHOOD FOR ITS EATERIES, ARTS AND ENTERTAINMENT.

Wicker Park boasts an eclectic assortment of cafes, independent stores, dive bars, upscale boutiques, art galleries and city parks including four-acre Wicker Park. The neighborhood is home to some of Chicago's most popular and acclaimed restaurants, elevating pizza and tacos to foodie fare and offering a wide variety of options for drinking and dining pleasure.

Located just south of Bucktown and northwest of The Loop, the neighborhood includes large historic 19th century brick and stone mansions and landmark Victorian homes on tree-lined streets. Modern new construction condominiums and single-family homes along with vintage walk-ups, three-flats and lofts round out the diversity of housing available.

Like neighboring Bucktown, Wicker Park's notable commercial architecture remains - re-imagined, redeveloped and restored. The iconic Flat Iron Arts Building, home to artists who moved to the neighborhood in the 1980s, still houses various art studios and local businesses today.

The CTA Blue Line offers convenient access to The Loop and O'Hare International Airport, while the Kennedy Expressway allows for an easy drive to surrounding neighborhoods and suburbs.



PAT YOUNG

(847) 997-7827

TOP PRODUCER CHICAGO, TOP NEIGHBORHOOD PRODUCER

TOP 1% NATIONWIDE

PYOUNG@YOUNGPROPERTYSALES.COM



CHRISTIE'S
INTERNATIONAL REAL ESTATE

1630WLEMOYNE.INFO