

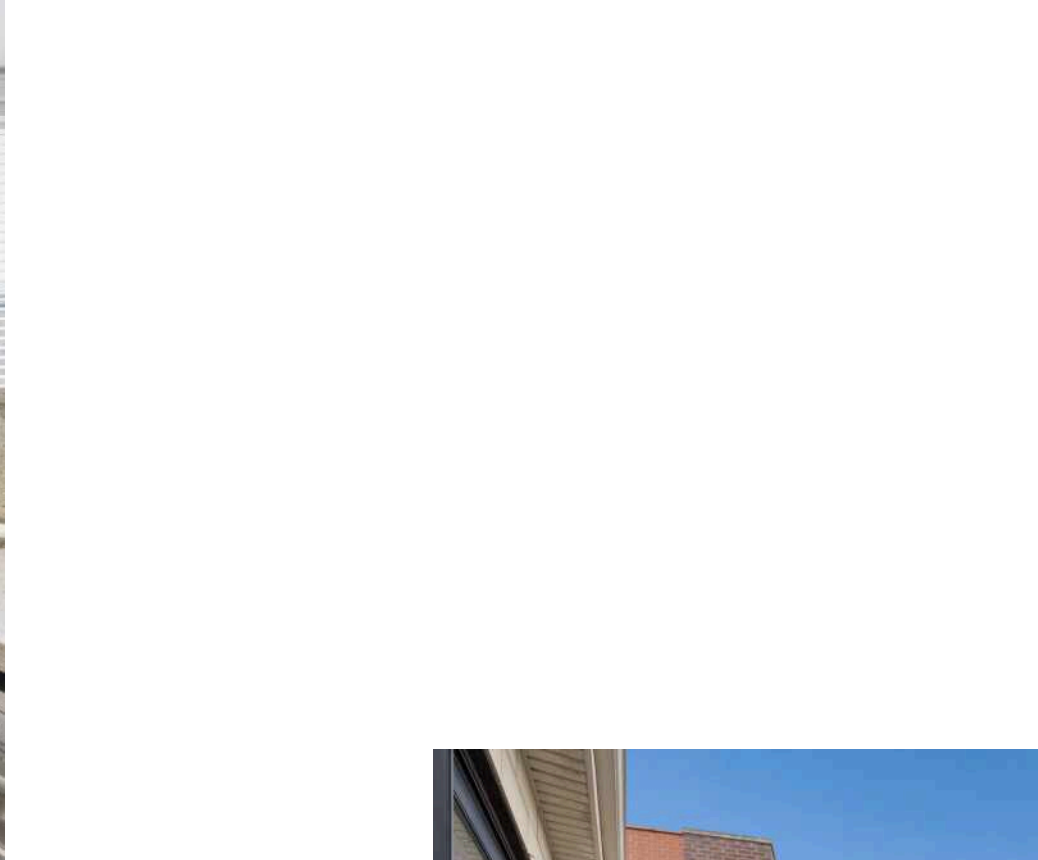
1633 N CLYBOURN AVENUE #3
RANCH TRIANGLE

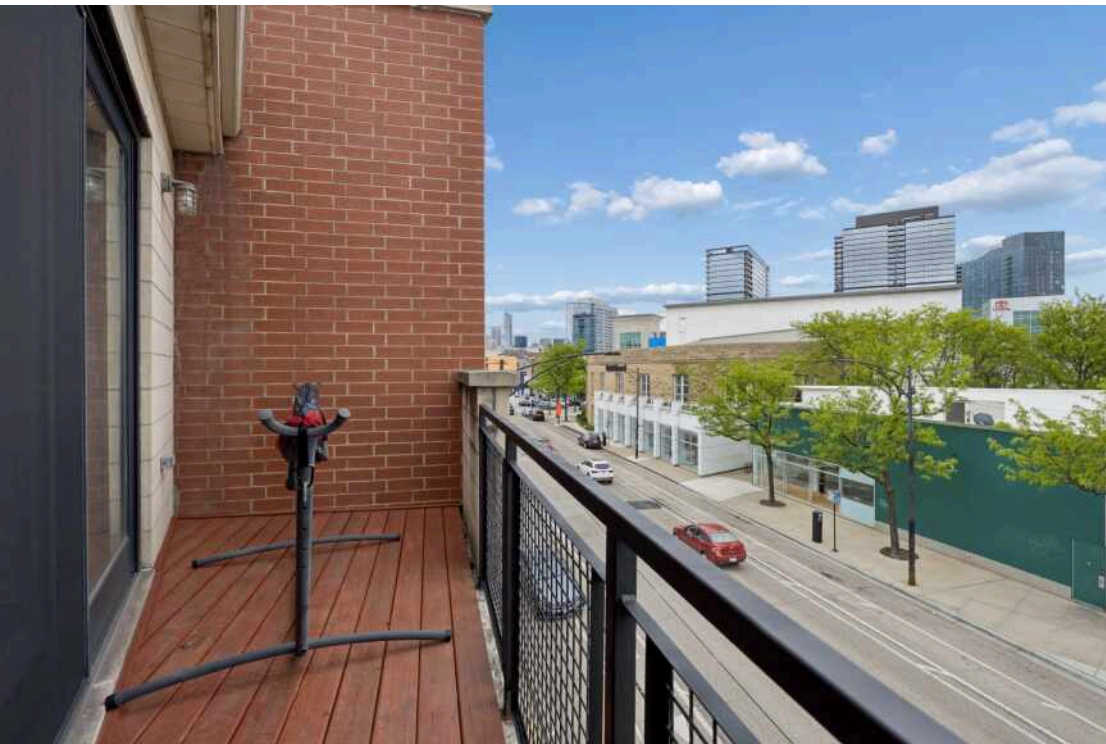


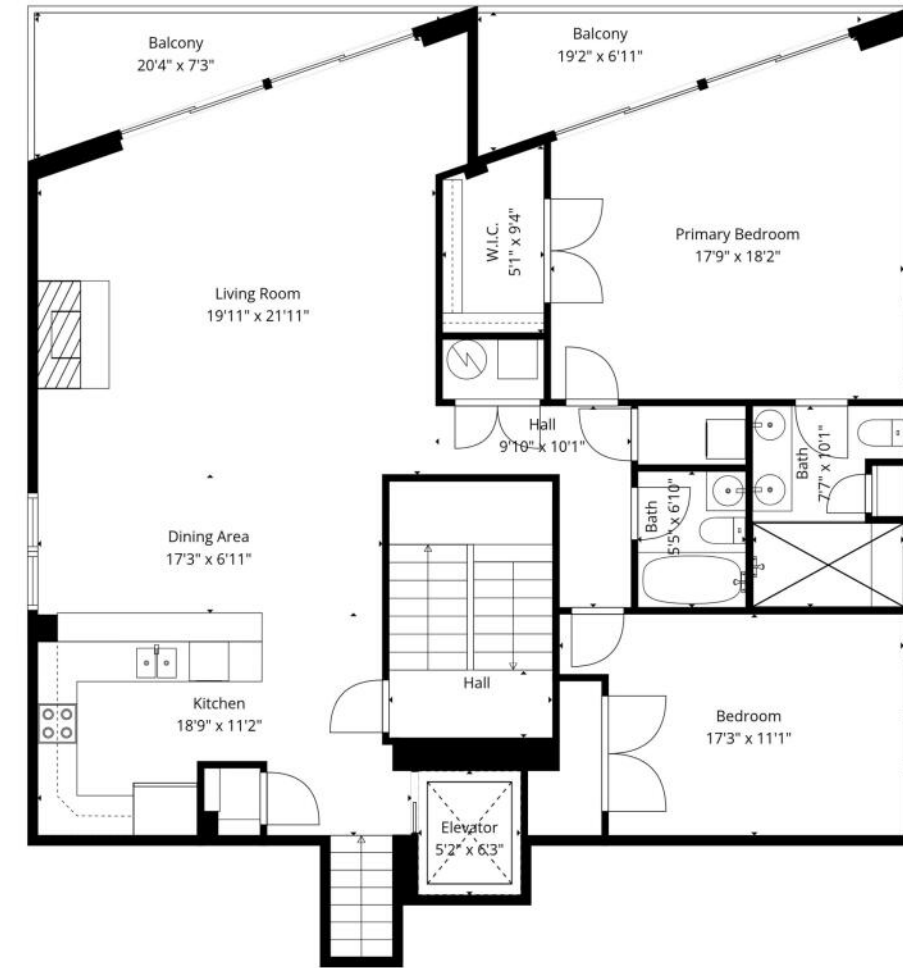


2 BEDROOM
2 BATH
TAXES: 10,154
ASSESSMENTS: 521

Boutique Lincoln Park elevator building with elevator access directly into the unit. This extra-wide 2 bedroom/2 bathroom southwest-facing condo is filled with natural light and features two private balconies with sweeping skyline views. The contemporary kitchen is thoughtfully designed with sleek flat-panel cabinetry, granite countertops with a custom backsplash, Bosch appliances, and a dedicated pantry closet. The expansive living and dining area is highlighted by a wall of floor-to-ceiling windows with motorized shades, a fireplace with a stone surround, and a large adjacent balcony perfect for grilling and entertaining. The spacious primary suite offers a luxurious retreat, complete with an oversized spa-caliber steam shower featuring rain and body sprays, a double sink vanity, a massive professionally organized walk-in closet, motorized shades, and a private balcony. Additional highlights include hardwood floors throughout, in-unit laundry, and integrated sound wiring with built-in speakers. There is exceptional in-unit storage including a large back hallway space ideal for additional organization. An extra-wide heated end parking space is included. All-brick boutique building located in the Oscar Mayer school district, with close proximity to the CTA Red Line, Whole Foods Market, The Salt Shed, NewCity, and convenient access to the expressway.







Floor Plan Created By Cubicasa App. Measurements Deemed Highly Reliable But Not Guaranteed.



LUKE REILLY

CELL 512. 826.5660

OFFICE 773.432.0200

LUKEREILLY@ATPROPERTIES.COM