

**1633 N PROSPECT AVE 1A**  
MILWAUKEE





#### ROOM DIMENSIONS

DINING ROOM : 11' × 13'

KITCHEN : 9' × 13'

PRIMARY BEDROOM : 11' × 13'

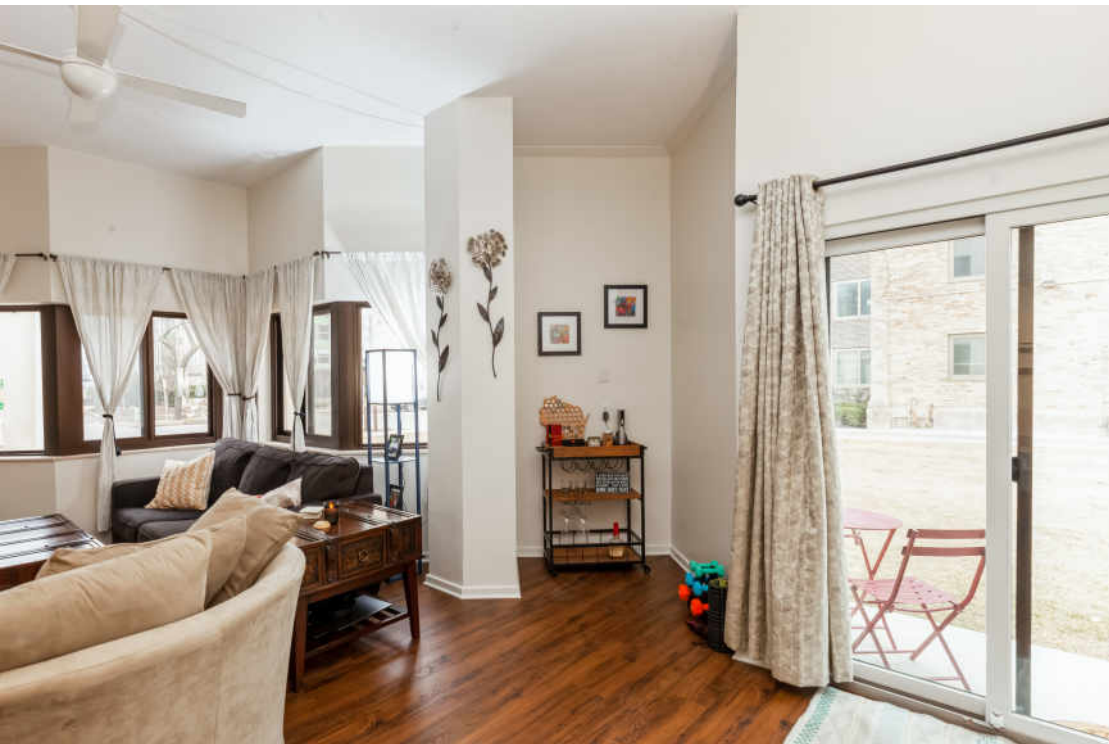
1 BEDROOM

1 BATH

## FIRST FLOOR UNIT IN PERFECT CITY LOCATION

One block from Brady street this FIRST floor Diamond Tower condo is a city life lover's dream. Sandwiched between shops, restaurants, Lake Michigan, and oak leaf trail, this condo is in the PERFECT location. This newly remodeled condo features luxury VP flooring, stainless steel appliances, a spacious bathroom, a large master bedroom, and a private patio. A deeded parking spot is included so no hassle trying to find parking elsewhere. No worrying about stairs or elevators to take the dog out with this MAIN level unit. Diamond Towers also offers a pool, hot tub, work out room, on site security guard, and roof top lounge area for relaxing or gatherings. Each floor of Diamond Towers has a laundry room. Don't miss the opportunity to own this condo and start enjoying all Milwaukee has to offer!

















## REID PELLIZZARI

(262) 939-0676

REID@ATPROPERTIES.COM

WWW.JMH-HOMES.COM



**@properties**<sup>®</sup>

UNIT1A.INFO