

**1645 MONROE LANE**  
HANOVER PARK





#### ROOM DIMENSIONS

LIVING/FAMILY ROOM : 18' × 17'

DINING ROOM : 20' × 9'

KITCHEN : 9' × 10'

LAUNDRY ROOM : 16' × 6'

PRIMARY BEDROOM : 12' × 17'

BEDROOM 2 : 9' × 10'

BEDROOM 3 : 10' × 10'

BEDROOM 4 : 11' × 10'

GARAGE : 19' × 20'



## WELCOME TO 1645 MONROE LANE

Fantastic opportunity in the highly desirable Greenbrook neighborhood of Hanover Park! This spacious four-bedroom ranch home is situated on a tranquil cul-de-sac street with a nearby park. As you step inside, you'll be greeted by a move-in ready interior with an open-concept family room, dining room, and kitchen that has been freshly painted, making it a blank canvas for your personal touch. The spacious master suite features its own full bathroom and a wall of closets, providing you with a comfortable and private retreat. Additionally, three more well-sized bedrooms ensure ample space and a full bathroom down the hall for your family and guests' convenience. The home boasts generous closet space throughout, ensuring your storage needs are met. With a convenient laundry/mudroom located off the garage, your daily routines become more organized and efficient. The highlight and cherry on top of this home is the expansive, fully-fenced backyard, which offers endless possibilities for relaxation, entertaining, and outdoor activities. Whether you're gardening or entertaining on the patio, or simply enjoying the serene surroundings, this backyard is your private oasis. The two-car attached garage, complemented by a wide driveway, offers plenty of parking options for your convenience. Plus, this home is ideally located close to schools, Lake Park HS, shopping centers, parks, Metra, and the Expressway, making it a convenient hub for all your daily activities. Don't miss out on this exceptional opportunity to own a corner ranch home in this fantastic family-friendly neighborhood. It's the perfect setting to create lasting memories and enjoy the comfort and convenience of Greenbrook living.

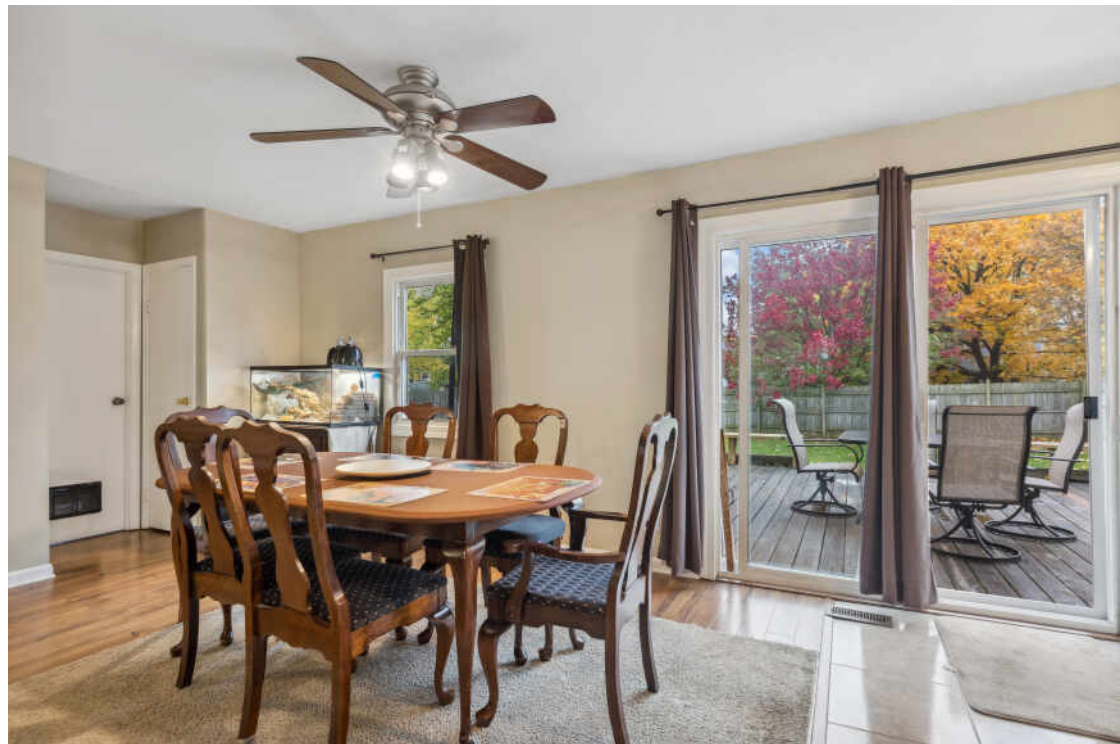
4 BEDROOM

2 BATH

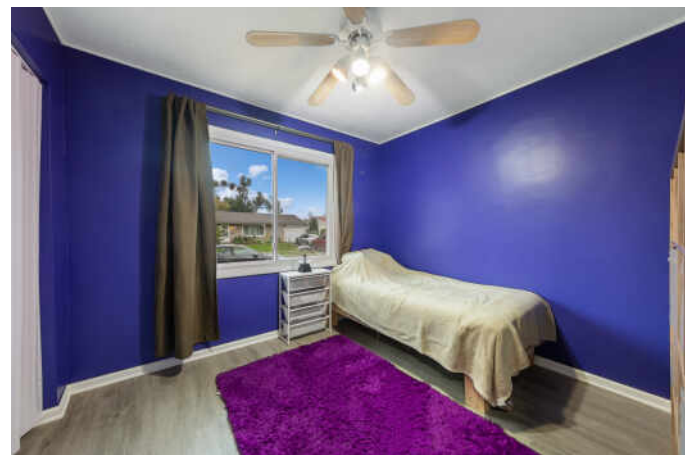
TAXES: \$6,163.00

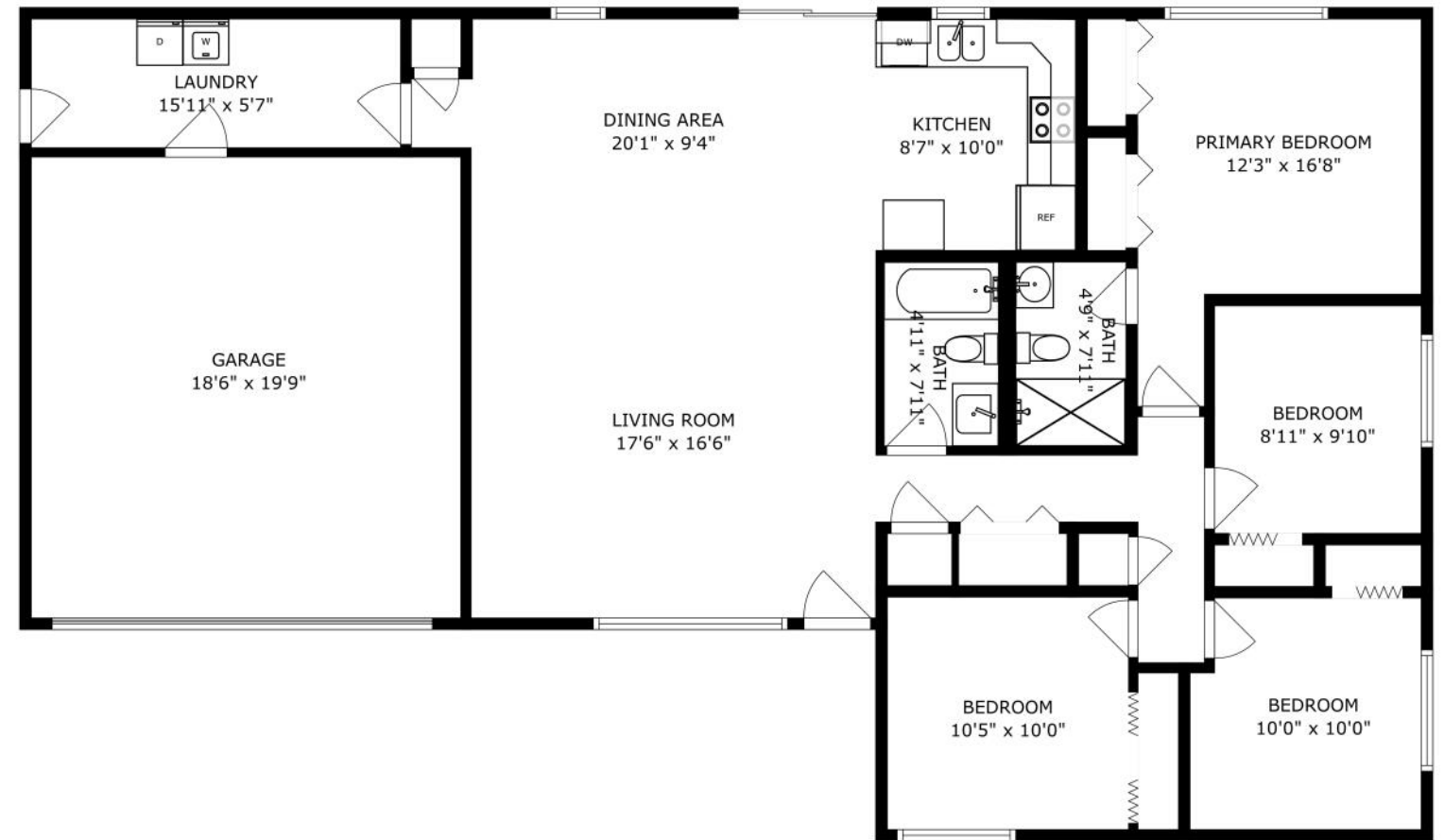
ASSESSMENTS: \$0







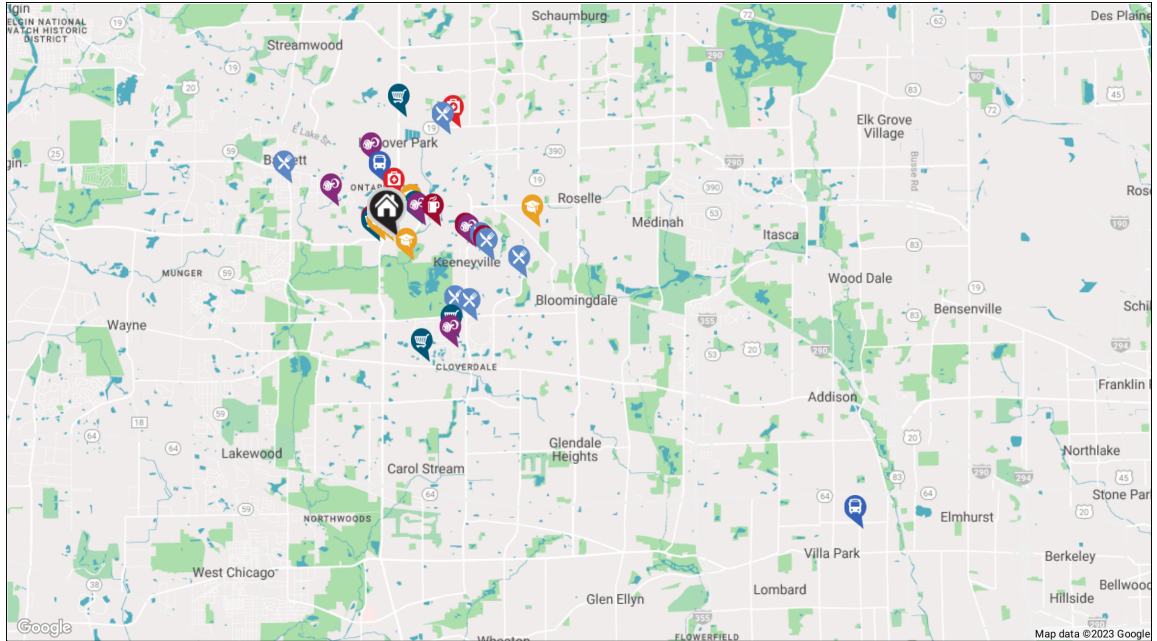




SIZES AND DIMENSIONS ARE APPROXIMATE, ACTUAL MAY VARY.







#### RESTAURANTS

Villaggio Ristorante  
1242 WEST LAKE STREET, 1.7 MI

Buffalo Wild Wings  
140 SOUTH GARY AVENUE, 1.8 MI

Bowlero Roselle  
1100 WEST LAKE STREET, 1.8 MI

Jameson's Charhouse  
94 STRATFORD DRIVE, 2.0 MI

Jet's Pizza  
1847 WEST IRVING PARK ROAD, 2.2 MI

Pasta Mia  
116 BARTLETT PLAZA, 2.3 MI

Tony Spavone's Ristorante  
266 WEST LAKE STREET, 2.4 MI

#### COFFEE SHOPS

Dunkin'  
BP GAS STATION, 0.4 MI

Starbucks  
1057 WEST LAKE STREET, 0.8 MI

Brunch Cafe-Roselle  
1500 WEST LAKE STREET, 1.4 MI

CLOUDTEA @ Five Spice Kitchen  
INSIDE FIVE SPICE KITCHEN, 1.7 MI

#### SHOPPING

Walgreens  
5500 COUNTY FARM ROAD, 0.4 MI

Five Star Euro Deli  
1234 EAST LAKE STREET, 0.6 MI

PetSmart  
162 SOUTH GARY AVENUE, 2.0 MI

Costco Wholesale  
505 WEST ARMY TRAIL ROAD, 2.2 MI

Menards  
7435 BARRINGTON ROAD, 2.3 MI

#### HEALTH CLUBS

Total Performance Factory  
1110 EAST LAKE STREET, 0.6 MI

Boxing  
893 VOYAGER DRIVE, 1.3 MI

Premium Athletes  
1380 WEST LAKE STREET, 1.4 MI

Hanover Park Park District  
Community Center & Park  
1919 WALNUT AVENUE, 1.5 MI

Life Time  
455 SCOTT DRIVE, 2.2 MI

#### HOSPITALS

Hanover Park Primary Care  
1515 WEST LAKE STREET, 0.8 MI

Children & Teens Medical Center  
1701 WEST WISE ROAD, 2.4 MI

#### SCHOOLS

Horizon Elementary School  
1701 GREENBROOK BOULEVARD, 0.1 MI

Greenbrook Montessori School  
1675 GREENBROOK BOULEVARD, 0.3 MI

Greenbrook Elementary School  
5208 ARLINGTON CIRCLE, 0.4 MI

New Lake College  
1300 GREENBROOK BOULEVARD #102,  
0.6 MI

Lake Park High School - West  
Campus  
500 WEST BRYN MAWR AVENUE, 2.6 MI

#### TRANSIT

Hanover Park  
METRA - MILWAUKEE DISTRICT WEST,  
1.1 MI

Villa Park  
METRA - UNION PACIFIC WEST, 10.0 MI





## FRANCESCA CICCONE

(630) 674-9063

[WWW.HOMESBYFRANCESCA.COM](http://WWW.HOMESBYFRANCESCA.COM)

[FRANCESCA@ATPROPERTIES.COM](mailto:FRANCESCA@ATPROPERTIES.COM)



CHRISTIE'S  
INTERNATIONAL REAL ESTATE

All specifications, features, designs, price, assessments, taxes and materials are subject to change without notice. Depicted floor plans and architectural renderings are only an artist's impression.

