

1645 STOCKTON AVENUE  
DES PLAINES

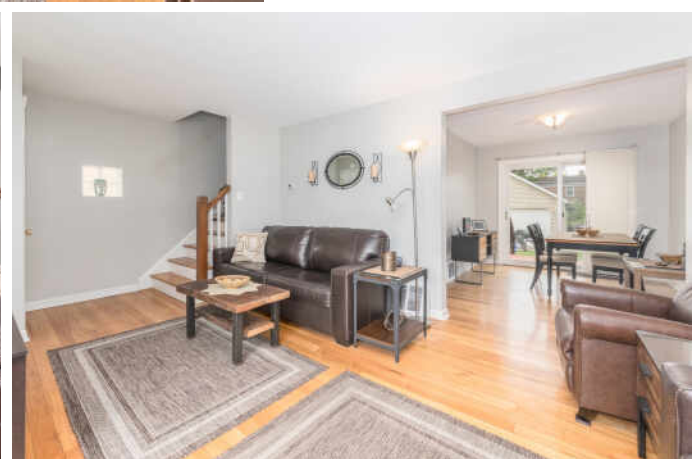
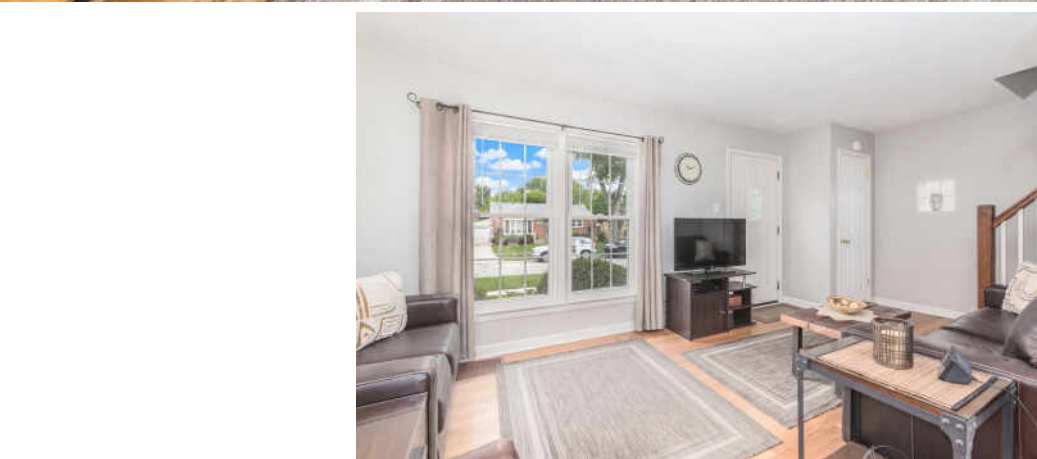




## LOVE WHERE YOU LIVE

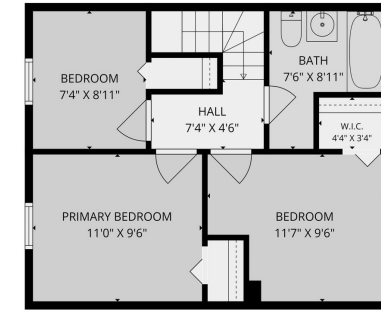
Welcome home to this charming and beautifully maintained brick duplex that offers comfort, character, and timeless appeal. Step inside to a bright and inviting living room that flows seamlessly into the dining area and kitchen, creating the perfect space for everyday living and entertaining. The second floor features three comfortable bedrooms and an updated full bath, while the full basement provides additional storage, laundry space, and endless possibilities for a hobby area, workout room, or recreation space. Outdoor living is just as enjoyable with a spacious deck overlooking the fenced backyard, complete with established gardens ready for your flowers, vegetables, or simply relaxing outdoors. A two-car garage adds convenience and extra storage. Ideally located near Arndt Park, you'll enjoy easy access to swimming, sledding, playgrounds, and year-round recreational activities. South School is just a few blocks away, making daily routines a breeze. Commuters and shoppers alike will appreciate the close proximity to shopping, restaurants, transportation, parks, and expressways. There are NO HOA fees. This move-in ready home offers the perfect blend of comfort, convenience, and outdoor enjoyment-don't miss your opportunity to see all it has to offer!

3 BEDROOM  
1 BATH  
TAXES: \$3885.00 HSD





1645 Stockton Ave. Des Plaines, IL **2nd FLOOR**



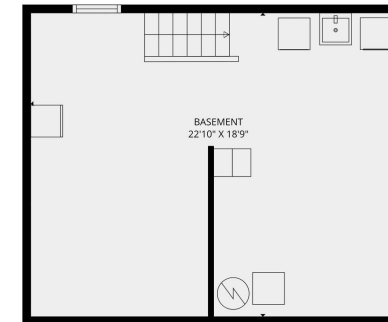
Measurements are approximate, actual may vary

1645 Stockton Ave. Des Plaines, IL **Main FLOOR**



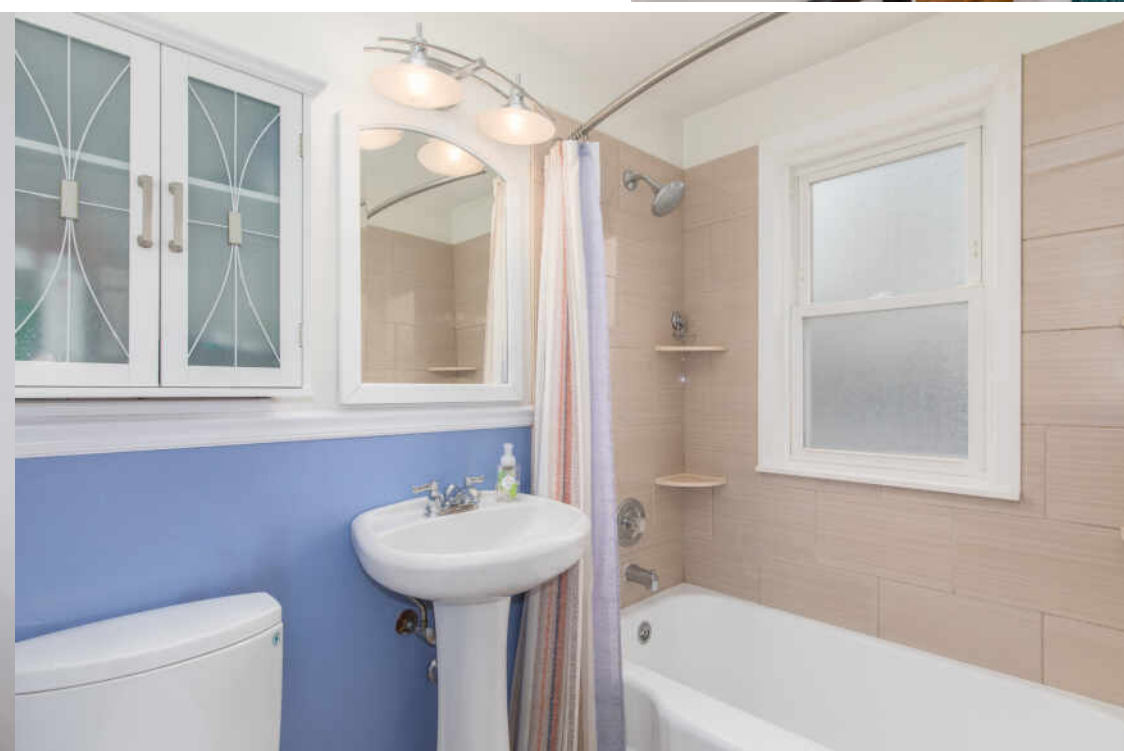
Measurements are approximate, actual may vary

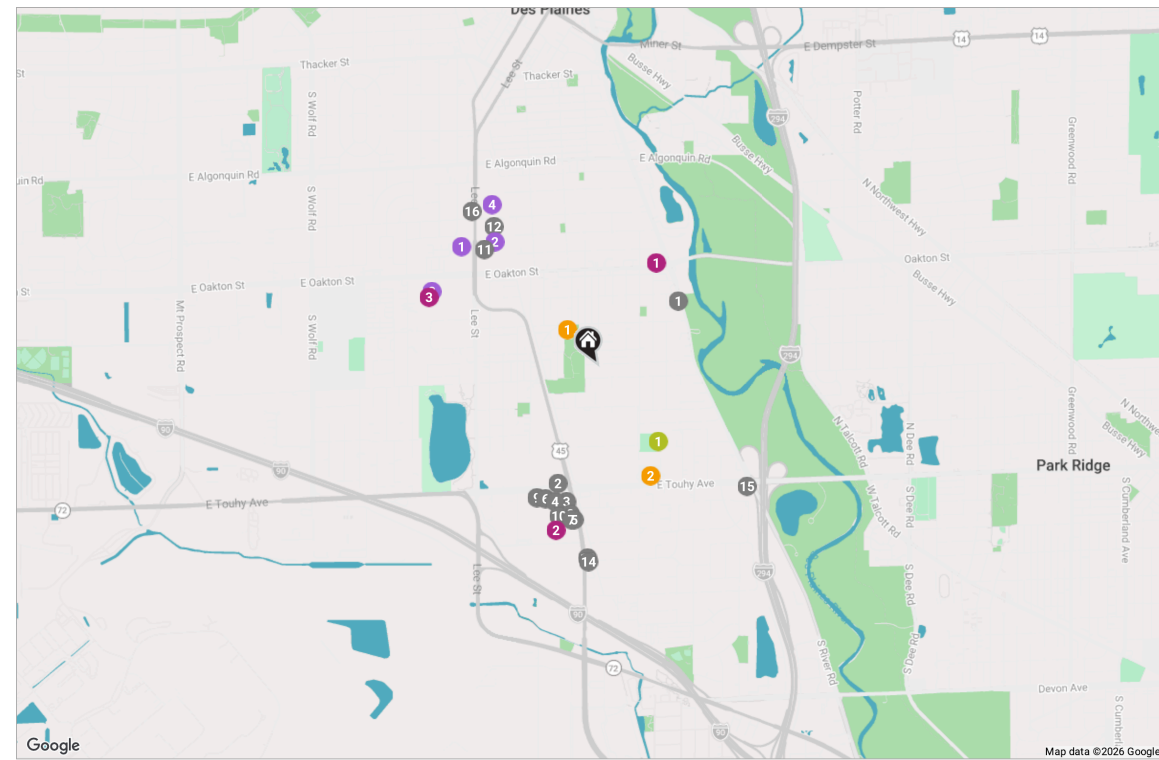
1645 Stockton Ave. Des Plaines, IL **Lower FLOOR**



Measurements are approximate, actual may vary







- |   |   |  |
|---|---|--|
| <p><b>RESTAURANTS</b></p> <ul style="list-style-type: none"> <li>1 Paradise Pup<br/>1724 SOUTH RIVER ROAD, 0.5 MI</li> <li>2 LongHorn Steakhouse<br/>1470 EAST TOUHY AVENUE, 0.6 MI</li> <li>3 Chili's Grill &amp; Bar<br/>7140 MANNHEIM ROAD, 0.6 MI</li> <li>4 IHOP<br/>7120 MANNHEIM ROAD, 0.7 MI</li> <li>5 Chipotle Mexican Grill<br/>7020 MANNHEIM ROAD, 0.7 MI</li> <li>6 Steak 'n Shake<br/>10421 EAST TOUHY AVENUE, 0.7 MI</li> <li>7 Panda Express<br/>7028 MANNHEIM ROAD, 0.7 MI</li> <li>8 Culver's<br/>7050 MANNHEIM ROAD, 0.7 MI</li> <li>9 Jimmy John's<br/>10431 EAST TOUHY AVENUE, 0.7 MI</li> <li>10 Subway<br/>7076 MANNHEIM ROAD, 0.7 MI</li> <li>11 Subway<br/>1585 LEE STREET SPACE 4, 0.8 MI</li> <li>12 Boston Fish Market Inc<br/>1225 FOREST AVENUE, 0.8 MI</li> <li>13 Starbucks Coffee Company<br/>2655 MANNHEIM ROAD, 0.9 MI</li> <li>14 Potbelly<br/>2695 MANNHEIM ROAD, 0.9 MI</li> <li>15 Tiffany's Restaurant Cafe<br/>2179 EAST TOUHY AVENUE, 0.9 MI</li> </ul> | <p><b>SHOPPING</b></p> <ul style="list-style-type: none"> <li>1 Walgreens<br/>1858 EAST OAKTON STREET, 0.6 MI</li> <li>2 Target<br/>7000 MANNHEIM ROAD, 0.8 MI</li> <li>3 Dollar Tree<br/>1031 EAST OAKTON STREET, 0.8 MI</li> <li>16 Beacon Tap<br/>1374 LEE STREET, 0.9 MI</li> </ul> <p><b>GROCERY</b></p> <ul style="list-style-type: none"> <li>1 Jewel-Osco<br/>1500 LEE STREET, 0.8 MI</li> <li>2 Jimenez International<br/>1565 LEE STREET, 0.8 MI</li> </ul> | <p><b>MARKETS</b></p> <ul style="list-style-type: none"> <li>3 Oak Farms Market<br/>1045 EAST OAKTON STREET, 0.8 MI</li> <li>4 ALDI<br/>1365 LEE STREET, 0.9 MI</li> </ul> <p><b>GYM</b></p> <ul style="list-style-type: none"> <li>1 Des Plaines Park District Administrative &amp; Leisure Center<br/>2222 BIRCH STREET, 0.4 MI</li> </ul> <p><b>SCHOOLS</b></p> <ul style="list-style-type: none"> <li>1 SOUTH ELEMENTARY SCHOOL<br/>1535 EVERETT AVENUE, 0.2 MI</li> <li>2 Iroquois Community School<br/>1836 EAST TOUHY AVENUE, 0.6 MI</li> </ul> |
|---|---|--|



## SHARON LYNCH

1 8474711984

8476925522

SHARONLYNCH@ATPROPERTIES.COM