

1646 PORTSMOUTH AVENUE
WESTCHESTER



@properties®

CHRISTIE'S
INTERNATIONAL REAL ESTATE



ROOM DIMENSIONS

LIVING ROOM : 15' × 21'

FAMILY ROOM : 13' × 19'

DINING ROOM : 12' × 12'

KITCHEN : 10' × 13'

PRIMARY BEDROOM : 15' × 19'

SECOND BEDROOM : 13' × 13'

THIRD BEDROOM : 9' × 14'

FOURTH BEDROOM : 11' × 14'

4 BEDROOM

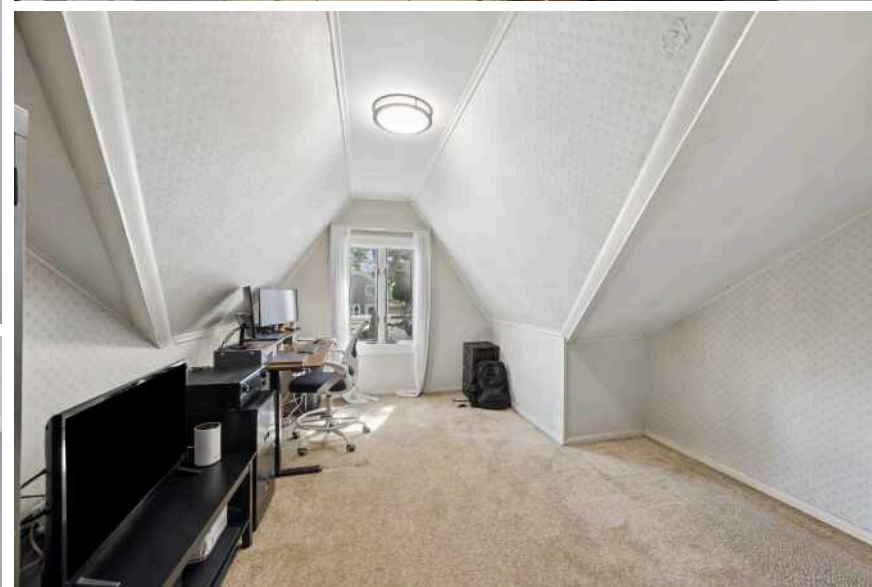
2.1 BATH

TAXES: \$6,803

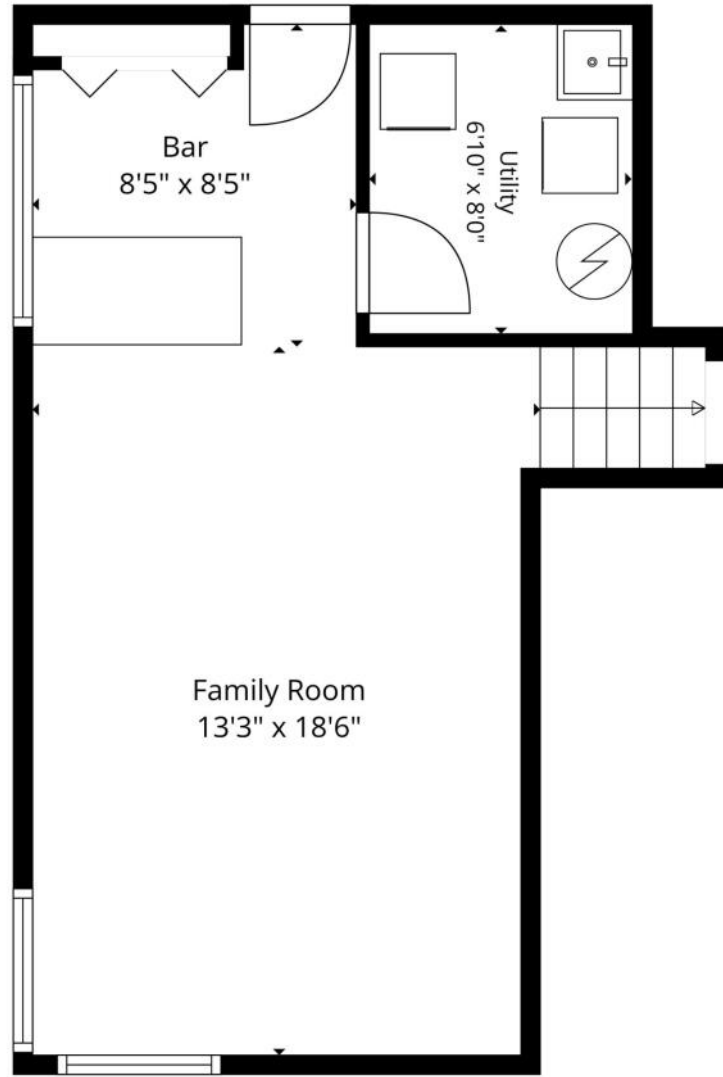
RARE TRI-LEVEL WITH EXCEPTIONAL SPACE

Unique and beautiful tri-level home in Westchester offers a flexible floor plan and an inviting spacious open-concept design. The main level is ideal for everyday living and entertaining, featuring a generous living room, dining area, kitchen, and a convenient powder room. The kitchen showcases plenty of oak cabinetry, granite countertops, and stainless steel appliances. The second level offers two comfortable bedrooms and a full bathroom. Privately situated on the upper level, the expansive primary suite serves as a true retreat with its own bathroom, walk-in closet, and an adjacent fourth bedroom that makes an ideal home office, nursery, or sitting room. The finished lower level provides additional living space with a welcoming family room, built-in bar area, separate laundry room, exterior access, and ample storage with a convenient crawl space. Step outside to enjoy the backyard featuring a brick-paver patio, green space for outdoor activities, and a storage shed with an attached overhang for added versatility. Desirable location with easy access to major expressways, commuter trains, and both airports. Blocks from Westchester Middle School, Westchester Park District with parks, playgrounds, walking paths, ball fields, outdoor pool, and more. Minutes from Oakbrook Center Mall, shopping and restaurants. With a versatile layout to suit a variety of needs, this one-of-a-kind home is ready for its next owner.

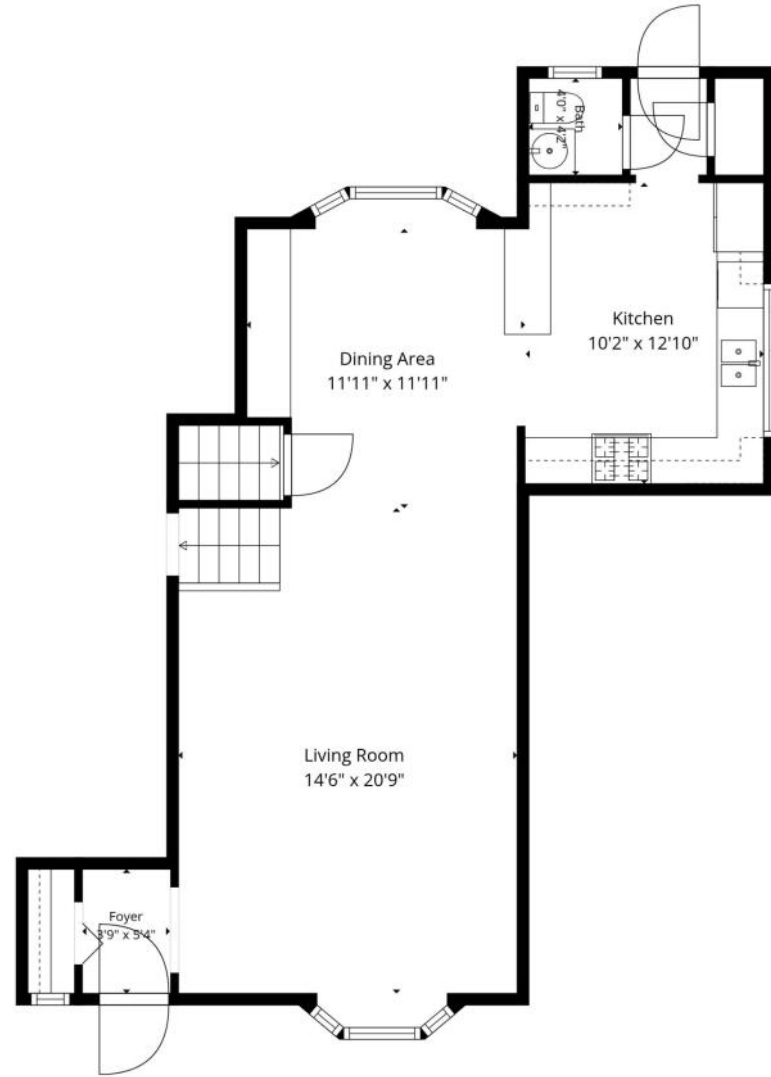




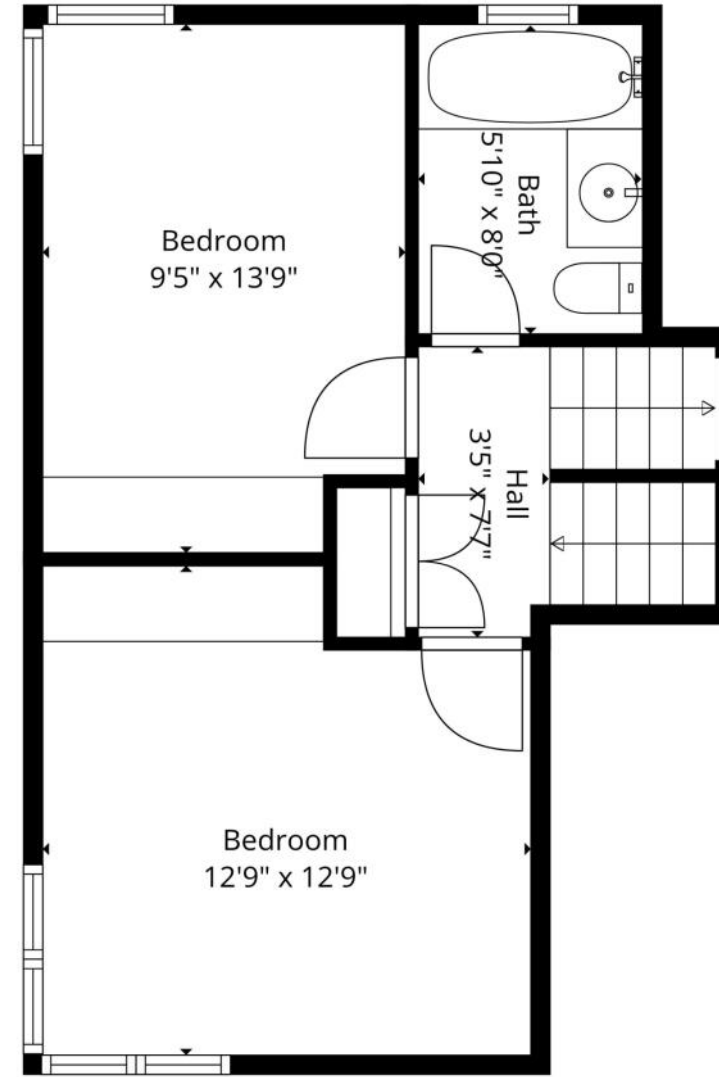




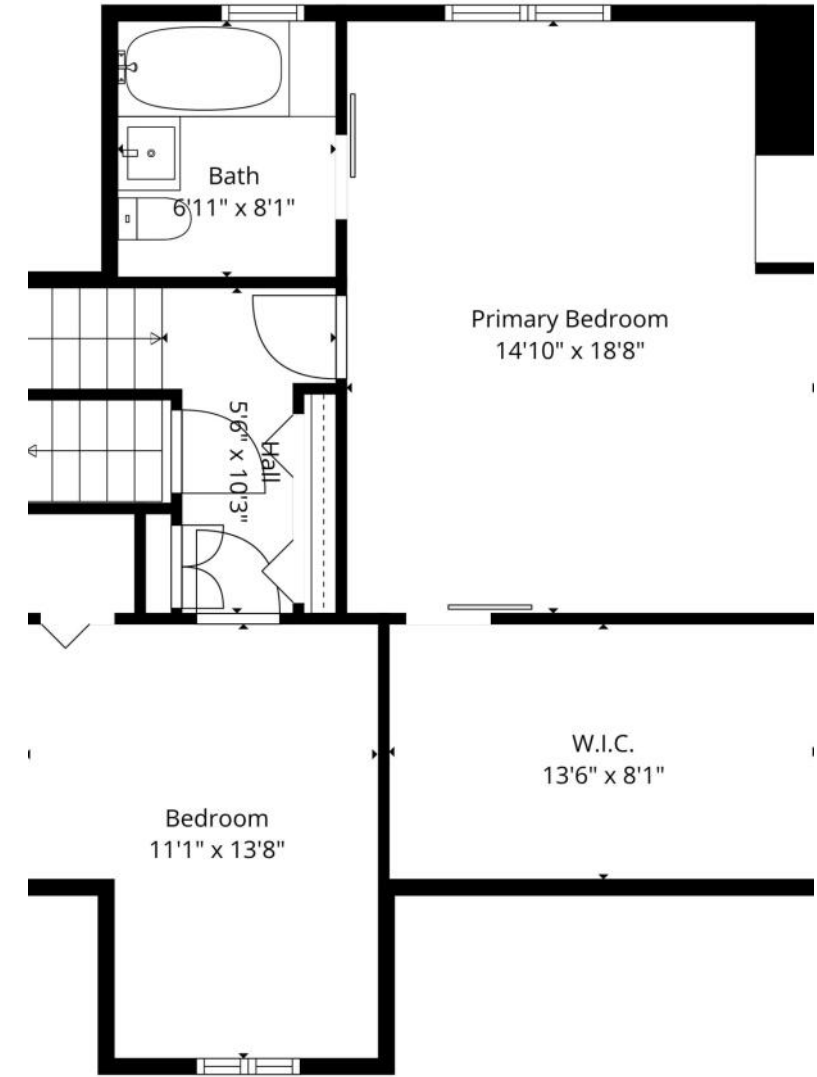
Floor Plan Created By Cubicasa App. Measurements Deemed Highly Reliable But Not Guaranteed.



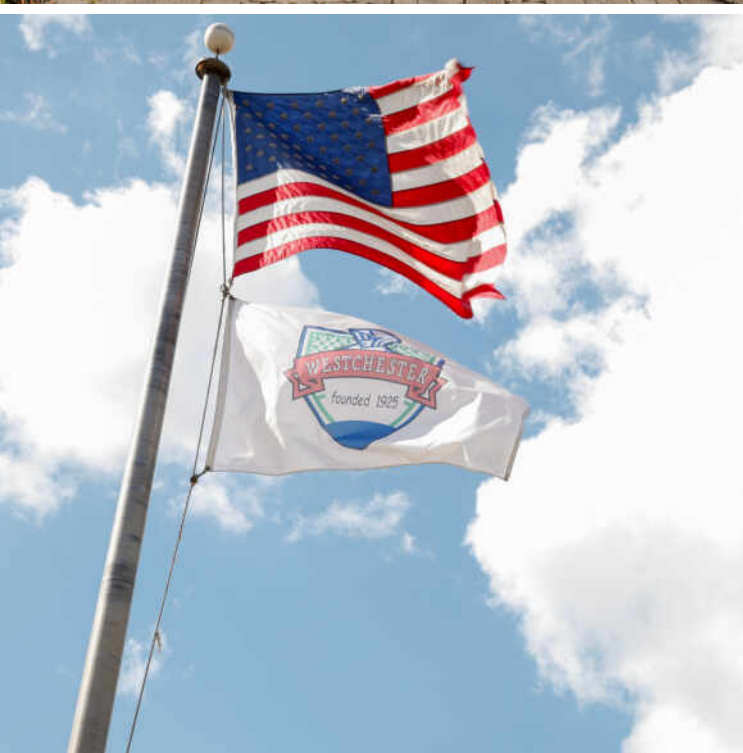
Floor Plan Created By Cubicasa App. Measurements Deemed Highly Reliable But Not Guaranteed.



Floor Plan Created By Cubicasa App. Measurements Deemed Highly Reliable But Not Guaranteed.



Floor Plan Created By Cubicasa App. Measurements Deemed Highly Reliable But Not Guaranteed.



THE VILLAGE OF WESTCHESTER WAS FARMLAND UNTIL 1924, WHEN ITS FOUNDER PURCHASED THE LAND TO DEVELOP AN ENGLISH-STYLED TOWN.

Today the village boasts local restaurants and shops, recreation centers, and parks. Westchester is also home to the Westbrook Corporate Center, which includes five 10-story towers with more than one million square feet of office space. Nearly all of the open land in the village has been consumed by expansion except for the 85-acre Wolf Road Prairie.

The small community comes together and hosts several annual events and activities including a Fourth of July parade and fireworks, BBQ Block Party, and Fall Festival at the Fountain.

Westchester offers access to downtown Chicago via the Eisenhower Expressway and provides Pace bus service to the Forest Park Transit Center.



JULIE WHITE

630.254.6652

JULIEWHITE@ATPROPERTIES.COM

