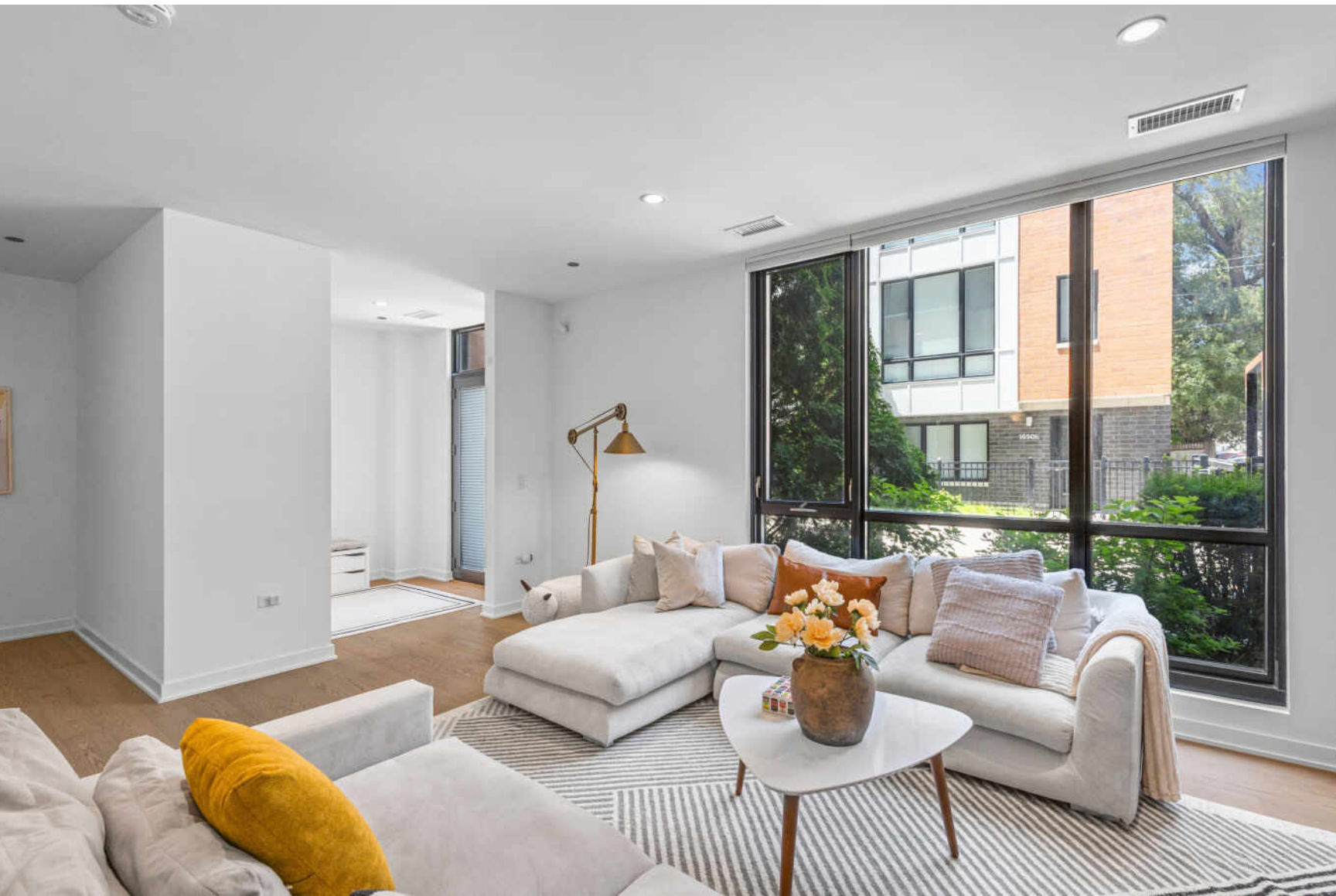


1648 W DIVISION STREET #110
WICKER PARK





ROOM DIMENSIONS

LIVING ROOM : 18' × 14'

DINING ROOM : 25' × 10'

KITCHEN : 17' × 8'

PATIO : 8' × 20'

PRIMARY BED : 17' × 12'

BEDROOM 2 : 12' × 19'

BEDROOM 3 : 13' × 19'

FOYER : 7' × 6'

LAUNDRY : 15' × 10'

WALK IN CLOSET : 9' × 9'

3 BEDROOM

2.1 BATH

TAXES: \$21,533

ASSESSMENTS: \$876

TWO BRILLIANT LIVING LEVELS IN WICKER PARK

Experience sophisticated urban living at The Alcove, Wicker Park's premier newer-construction luxury condominium community. Residence 110 offers more than 2,400 square feet of beautifully designed living space, combining the scale and privacy of a single-family home with the convenience of luxury condominium living in an intimate boutique elevator building. Thoughtfully designed for everyday living and entertaining, the open-concept floor plan is filled with natural light through dramatic floor-to-ceiling windows.

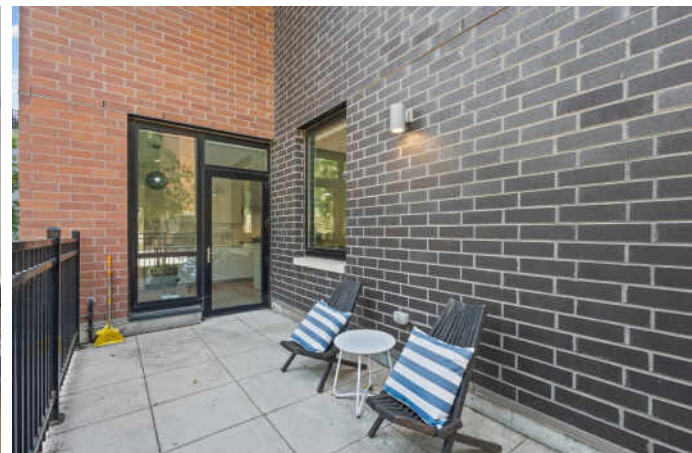
The designer chef's kitchen features sleek Italian cabinetry, premium built-in Viking appliances, quartz countertops, and an oversized island that anchors the main living space. Wide-plank hardwood flooring flows throughout the living areas, while the luxurious primary suite offers a spa-inspired bath with a soaking tub, oversized shower, dual vanity, and an expansive walk-in closet.

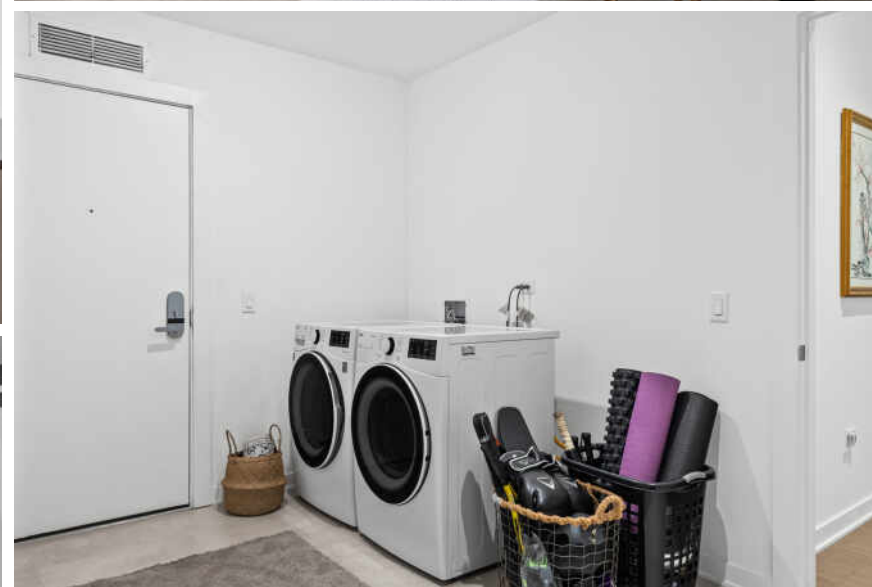
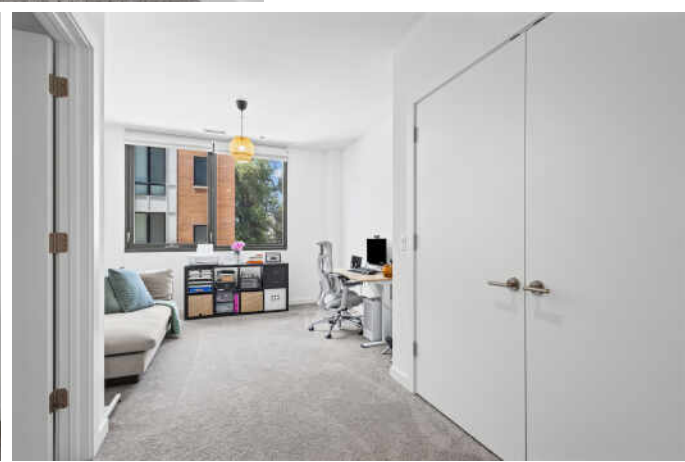
Outdoor living is equally inviting with a private patio, beautifully landscaped interior courtyard, and an expansive community rooftop terrace showcasing breathtaking skyline views. Heated attached garage parking is included.

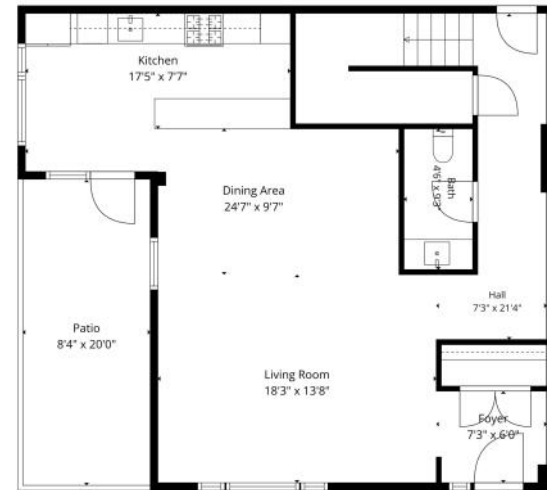
Perfectly positioned in the heart of one of Chicago's most vibrant neighborhoods, this exceptional two-level residence is just steps from the Blue Line, acclaimed restaurants, boutique shopping, neighborhood cafes, parks, and Wicker Park's renowned nightlife. Enjoy effortless access to downtown and O'Hare while embracing the unmistakable energy and character of one of Chicago's most sought-after neighborhoods.

This is a rare opportunity to own one of Wicker Park's finest newer-construction residences, offering exceptional design, generous living space, premium finishes, and an unbeatable walk-to-everything location.





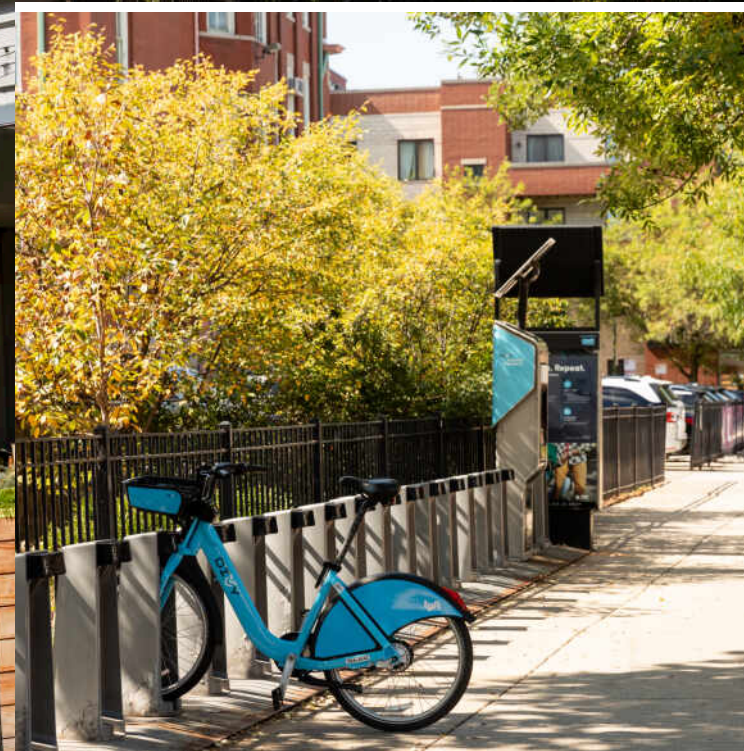




Floor Plan Created By Cubicso App. Measurements Deemed Highly Reliable But Not Guaranteed.



Floor Plan Created By Cubicso App. Measurements Deemed Highly Reliable But Not Guaranteed.



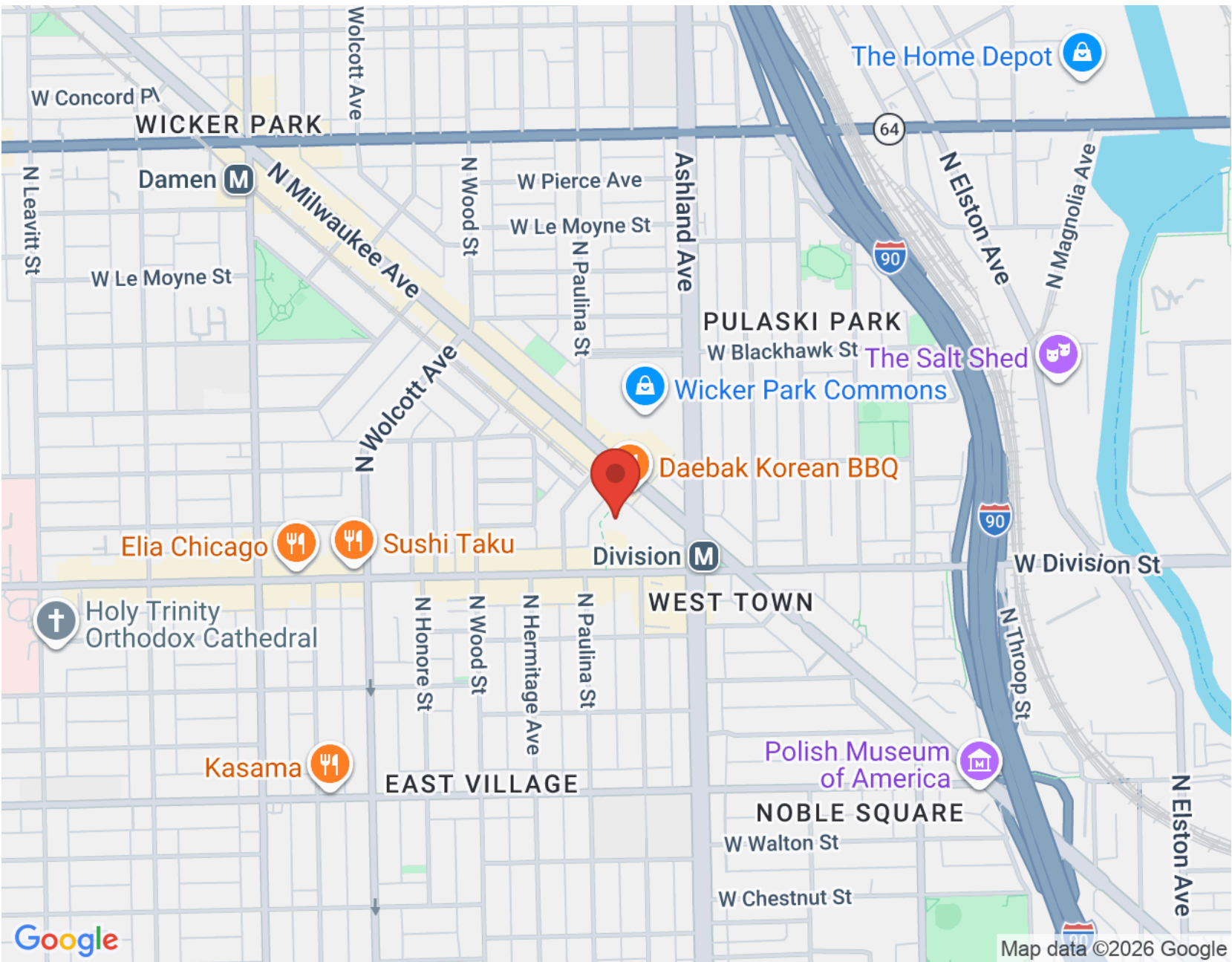
RESIDENTS AND BUSINESSES FLOCKED TO **WICKER PARK** TO REBUILD AFTER THE GREAT CHICAGO FIRE OF 1871. TODAY, CHICAGOANS FLOCK TO THE HIP, HAPPENING NEIGHBORHOOD FOR ITS EATERIES, ARTS AND ENTERTAINMENT.

Wicker Park boasts an eclectic assortment of cafes, independent stores, dive bars, upscale boutiques, art galleries and city parks including four-acre Wicker Park. The neighborhood is home to some of Chicago's most popular and acclaimed restaurants, elevating pizza and tacos to foodie fare and offering a wide variety of options for drinking and dining pleasure.

Located just south of Bucktown and northwest of The Loop, the neighborhood includes large historic 19th century brick and stone mansions and landmark Victorian homes on tree-lined streets. Modern new construction condominiums and single-family homes along with vintage walk-ups, three-flats and lofts round out the diversity of housing available.

Like neighboring Bucktown, Wicker Park's notable commercial architecture remains - re-imagined, redeveloped and restored. The iconic Flat Iron Arts Building, home to artists who moved to the neighborhood in the 1980s, still houses various art studios and local businesses today.

The CTA Blue Line offers convenient access to The Loop and O'Hare International Airport, while the Kennedy Expressway allows for an easy drive to surrounding neighborhoods and suburbs.



NOTES _____



TOM MCCAREY - AWARD-WINNING BROKER SINCE 2002

NAMED TOP 1.5% BROKER IN US BY WALL STREET JOURNAL

TOM.MCCAREY@ATPROPERTIES.COM

READY TO MAKE YOUR NEXT MOVE? I'M ALREADY READY!

773.848.9241

