

16600 LIBERTY CIRCLE #3S

ORLAND PARK





ROOM DIMENSIONS

LIVING ROOM : 21' × 14'

BALCONY : 11' × 5'

DINING ROOM : 14' × 9'

KITCHEN : 13' × 10'

LAUNDRY : 10' × 7'

PRIMARY BEDROOM : 15' × 13'

WALK-IN-CLOSET : 6' × 3'

2ND BEDROOM : 13' × 11'

PENTHOUSE LEVEL SERENITY: THIS HOME
DELIVERS RARE PRIVACY, QUIET, AND THE
LUXURY LIVING ON THE TOP FLOOR.

This well-maintained 2 bed/2 bath condo features a bright and functional layout that's easy to live in and great for everyday comfort, with a smooth flow from the kitchen and dining area into the main living space and generously sized bedrooms with ample closet space. Recent updates include a new air conditioner (2024) and water heater (2025), providing peace of mind and helping reduce future maintenance costs. The unit is part of a quiet, well-kept community close to shopping, dining, parks, and transportation, and is just minutes from the Orland Grassland Trails, a 13-mile path ideal for biking, hiking, dog walking, and more. A truly move-in-ready opportunity in a convenient and desirable location.





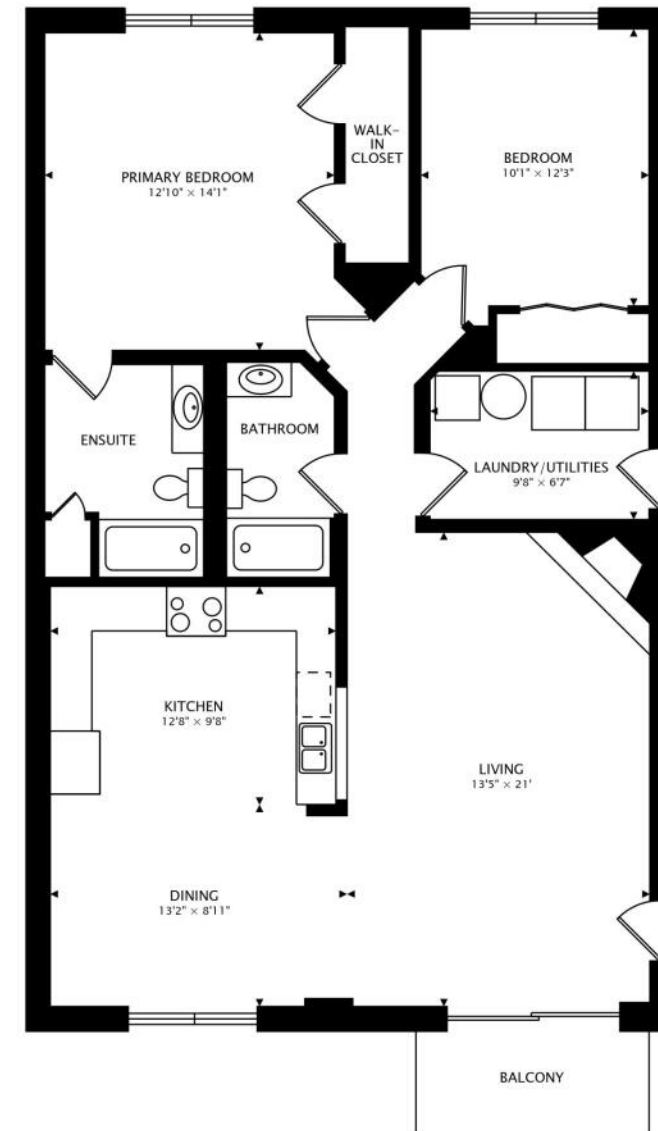
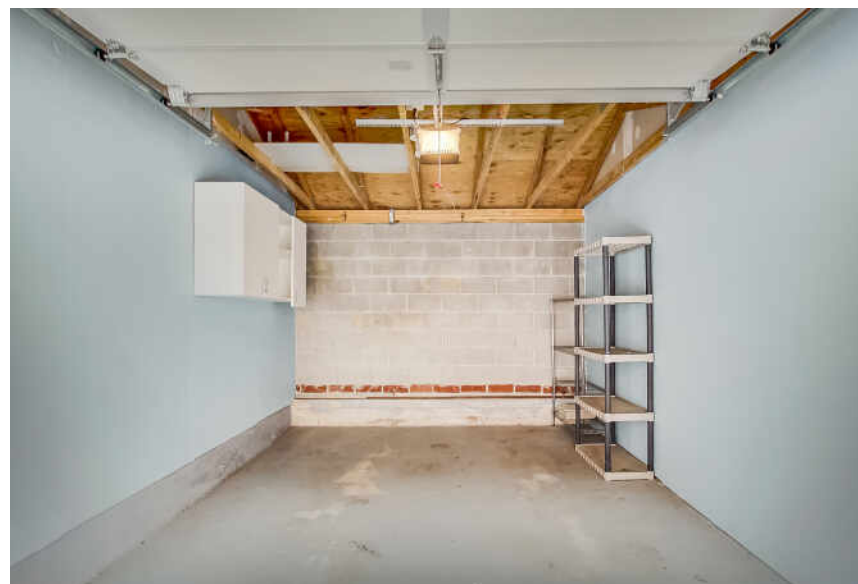


WITH AN ABUNDANCE OF PARKS AND A GROWING SHOPPING AND DINING SCENE, **ORLAND PARK** IS ONE OF THE MOST SOUGHT-AFTER PLACES TO LIVE IN CHICAGO'S SOUTH SUBURBS.

The village has a population of nearly 60,000 and appeals to those looking for a vibrant, tight-knit community in close proximity to the city of Chicago. Parks, trails, and golf courses abound, offering plenty of recreational opportunities for outdoorsy types. In the summer, Lake Sedgewick is the premier place to explore, fish, and boat, with pedal boats and kayaks available for rent. The Centennial Park Aquatic Center is another popular spot where residents can cool off in the pool or play a game of volleyball. Athletic fields and seasonal events are also hosted at Centennial Park.

When it comes to live entertainment, there are several nearby attractions including the Hollywood Casino Amphitheatre – one of Chicagoland's largest outdoor music venues – located in Tinley Park. Even closer to home is the Orland Park Theatre Troupe, which has been putting on an array of productions for locals to enjoy since 1993.

Approximately a 27-mile drive from downtown Chicago, Orland Park offers convenient access to I-294, I-355, I-57, and I-80. Commuters are just a train ride away from the city thanks to Metra's SouthWest Service line, which has a stop in Orland Park.



1267 sq ft + 46 sq ft BALCONY



GERARDO GARCIA, ABR, RENE, PSA

OFFICE: (312) 254-0200

MOBILE: (773) 319-5007

GGARCIA@ATPROPERTIES.COM



CHICAGO HOME LIVING

CHICAGOHOMELIVING.COM

@properties®

CHRISTIE'S
INTERNATIONAL REAL ESTATE