



1674 ANNAPOLIS DRIVE GLENVIEW

1674 ANNAPOLIS DRIVE • GLENVIEW



@properties | CHRISTIE'S
INTERNATIONAL REAL ESTATE

LUXURY
PORTFOLIO
INTERNATIONAL



DEBBIE HEPBURN PREMIER RESIDENTIAL BROKER

847.867.5825 mobile
847.998.0200 office
dhepburn@atproperties.com
DebbieHepburn.com

DEBBIE HEPBURN TEAM
connecting and moving together

1674 ANNAPOLIS DRIVE • GLENVIEW





1674 ANNAPOLIS DRIVE STUNNING 6 BEDROOM/4.1 BATH HOME LOCATED ON ONE OF THE MOST DESIRABLE STREETS IN THE GLEN

FEATURES

Welcoming foyer that is flanked by living room and dining room with tray ceiling and custom molding. Dual staircase with rod iron spindles showcases the gleaming wood floors and sunshine pouring through the front windows. New Chef's kitchen with spectacular custom black cabinetry, quartz countertops and backsplash, Subzero and Thermador SS appliances, impressive center island with seating and beverage island with two refreshment fridges, separate ice maker and sink. Eat-in breakfast room with French doors leading to paver patio and professionally landscaped yard. Just off the kitchen is the bright two-story family room with gas fireplace surrounded by custom shelving and floor to ceiling windows to bring in lots of natural sunlight. First floor also has a gorgeous office with custom mahogany cabinetry and handsome desk. Also, first floor bedroom/sitting room, power room, and laundry room/mudroom complete this first floor masterpiece. The second floor boasts a large primary suite with fireplace, sitting area, two walk in closets and new bath with dual sinks, make-up area, large walk-in shower, tub, separate water closet and heated floor/towel bar. Open loft area and three generous size bedrooms with vaulted ceilings and two additional full baths. Huge, finished basement includes a large recreation room with wet bar, temp controlled wine cellar, theatre room with large screen and built in surround speakers, sixth bedroom and full bath - the perfect area to entertain friends or create special family time. Fully fenced in yard with professionally designed patio including firepit and built in grill. Three car garage.



DEBBIE HEPBURN PREMIER RESIDENTIAL BROKER

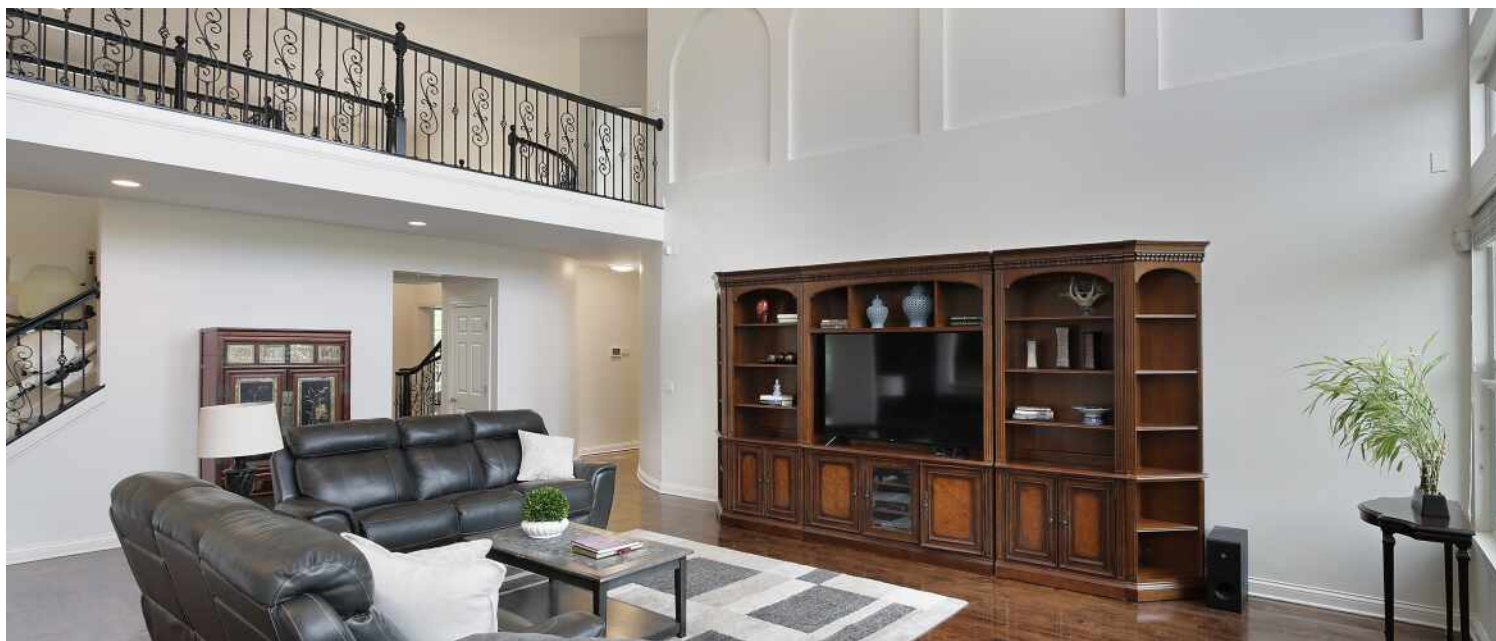
847.867.5825 mobile
847.998.0200 office

dhepburn@atproperties.com
DebbieHepburn.com





































JUST 20 MILES FROM DOWNTOWN CHICAGO, **GLENVIEW** IS A DESTINATION IN ITS OWN RIGHT.

Locals love the many parks and recreational facilities that are maintained by the Glenview Park District, along with highly-rated schools, easily-accessible public transportation, and shopping centers such as The Glen.

The scenic North Shore town has expanded rapidly thanks to its established neighborhoods, convenient access to transportation, and array of amenities.

More than 45,000 people call Glenview home, with properties ranging from townhomes and condominiums to luxury custom homes featuring the latest amenities. Newer homes can also be found at The Glen, a large development on the site of the former Glenview Naval Air Station that offers an assortment of shops and restaurants, a movie complex, the Kohl Children's Museum, and access to one of the town's two Metra stations.

Glenview is served by a number of public and private schools, including Glenbrook South High School, ranked among the top in the nation according to Business Insider.

The Glenview Park District offers indoor and outdoor pools, golf courses, soccer fields, nature trails, an ice center, tennis club, and multi-purpose community center.

In addition to modern development, Glenview celebrates and preserves its early days with two notable attractions: Wagner Farm and The Grove. A 20-acre working farm, Wagner Farm has hands-on programs – horseback riding, tractor driving, and other activities – that reflect a day in the life of a 1920s farmer. The Grove, a National Historic Landmark, includes a prairie, nature trails, historic buildings, and a log cabin that dates back to the 1850s.





