

**168 ADDISON ROAD**  
RIVERSIDE







#### ROOM DIMENSIONS

LIVING ROOM : 31' × 14'

DINING ROOM : 16' × 15'

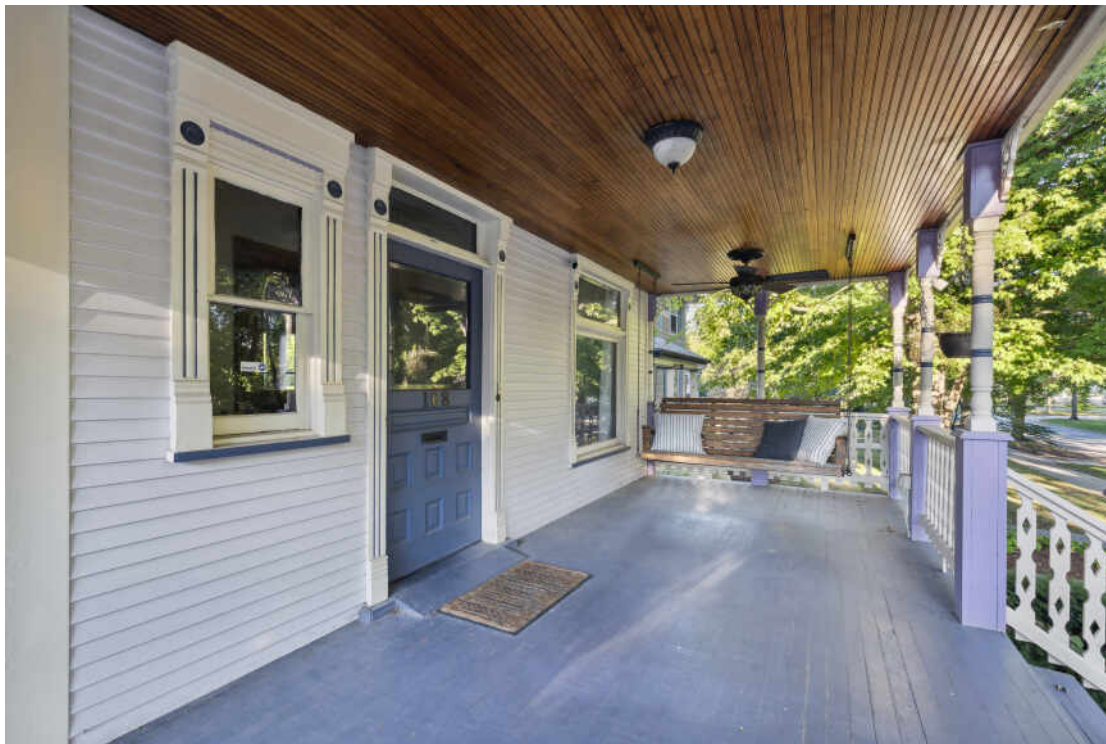
KITCHEN : 20' × 17'

PRIMARY BEDROOM : 27' × 17'

SECOND BEDROOM : 20' × 13'

THIRD BEDROOM : 15' × 15'

FOURTH BEDROOM : 14' × 11'



4 BEDROOM

3.1 BATH

TAXES: \$13,217

Victorian charm meets modern paradise. Built in 1888 with original target moldings, hardwood floors, antique fixtures, this home has been lovingly maintained by relatively few owners since it was built (including a famous, published poet). The home has been renovated to include a french drainage system for the yard, solar panels, hookup for EV, a beautiful primary bedroom and bathroom including heated floors in the bathroom, a large walk in closet, fireplace, skylight in the bedroom and in the oversized shower and steam room, and a large balcony (designed ready for a hot tub) overlooking the yard. Large basement provides entertainment space with custom lighting, half bath, refrigerator room, sink, microwave, and plenty of storage. The kitchen contains 3 pantries, Wolf stove, SubZero refrigerator/ freezer, and granite counters. There are custom built-ins throughout the home. Washer and dryer are just outside the primary suite for maximum convenience. At the end of the block is one of the many Olmsted designed parks and a short walk to the highly rated Riverside-Brookfield schools. The community is a dream for walkers, cyclists, kayakers, and birders. Short walk to Metra train.

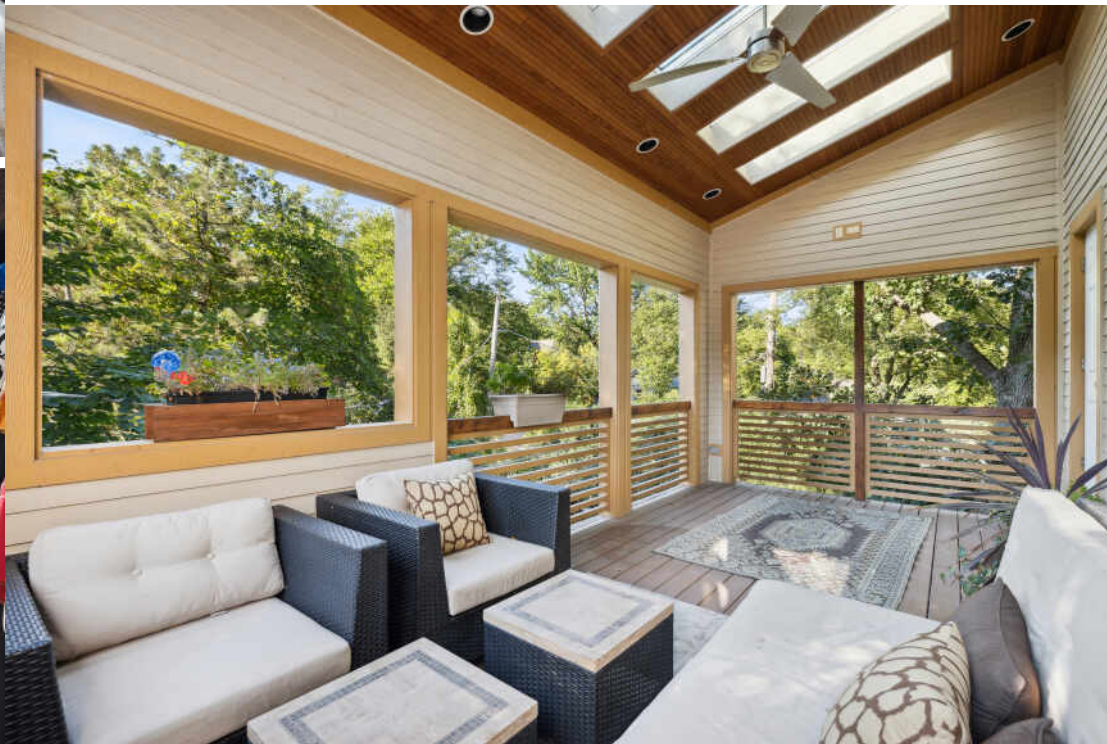
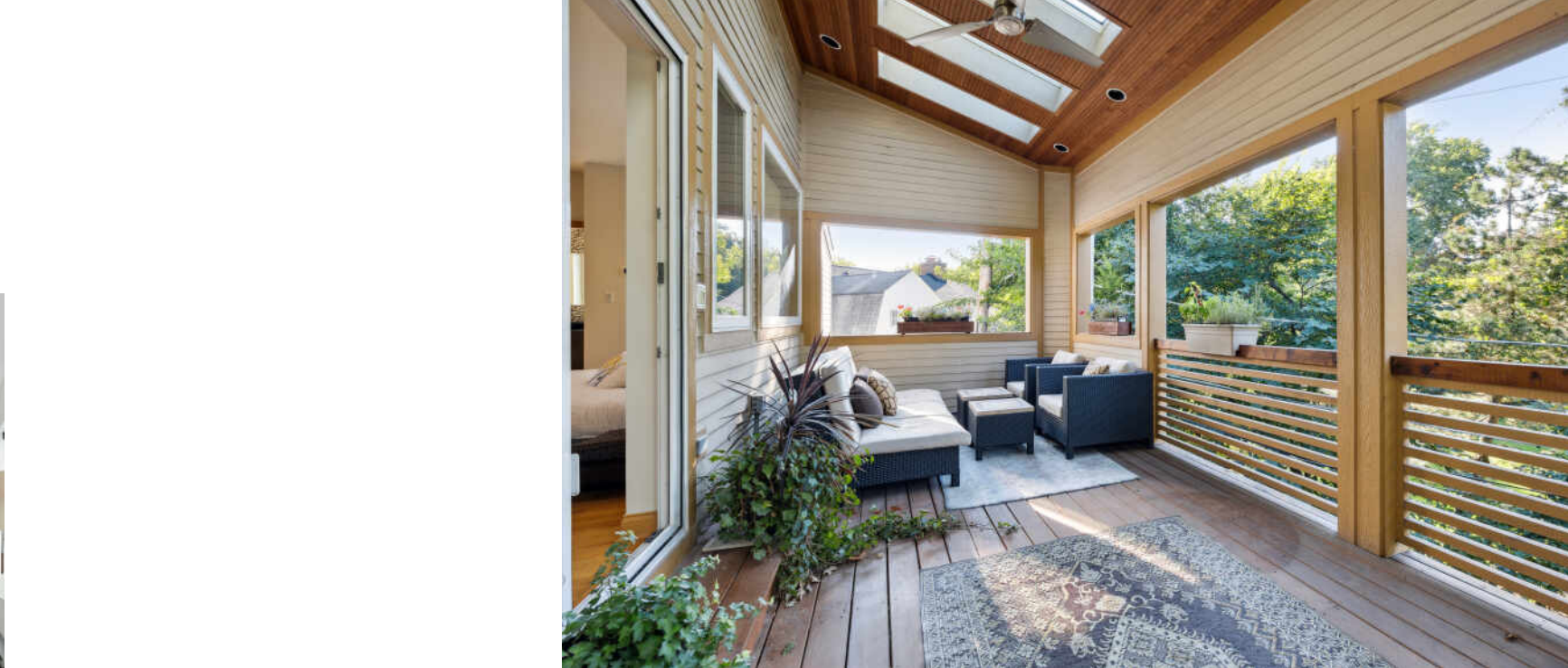
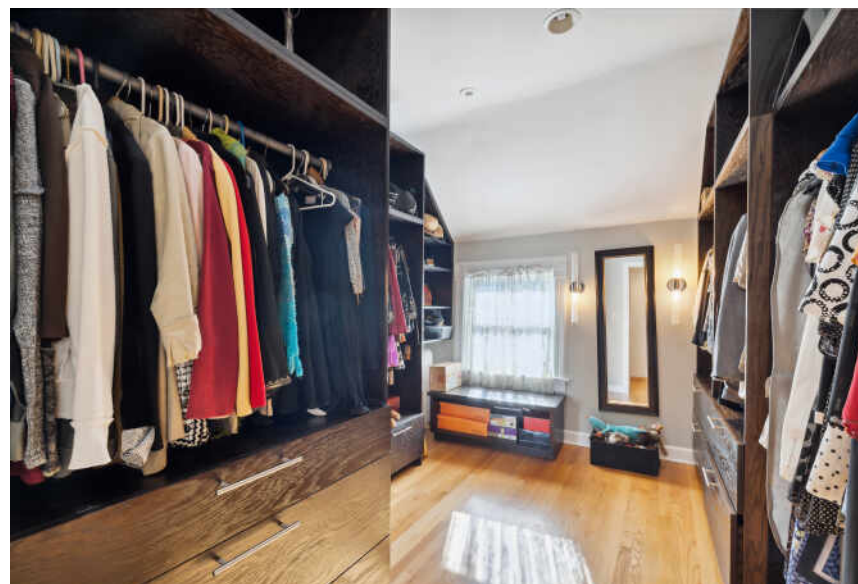
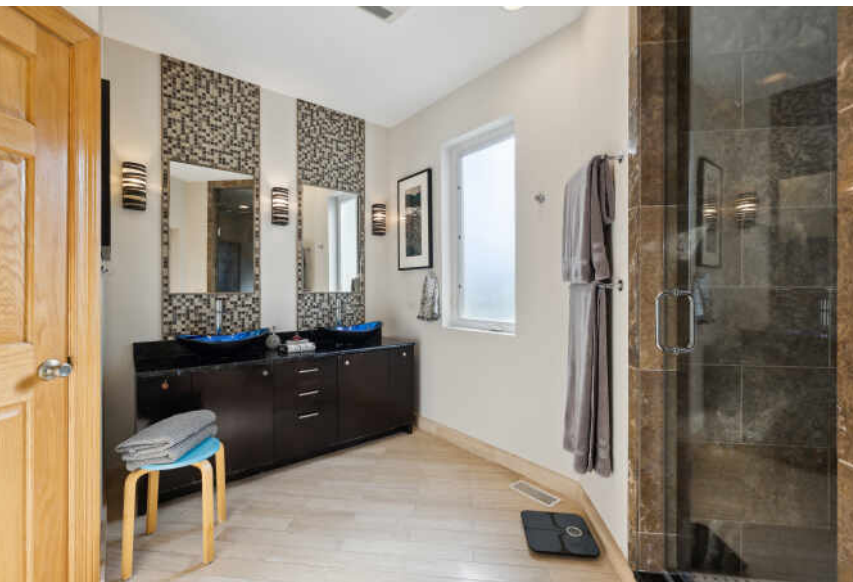




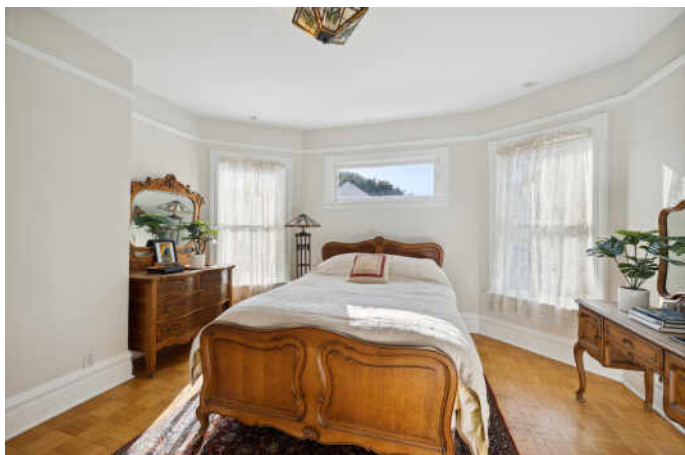
















## RIVERSIDE IS CONSIDERED TO BE THE FIRST PLANNED COMMUNITY IN THE UNITED STATES.

Incorporated in 1875, the historically recognized village is noted for its expansive parkways, charming town center, and early 20th century architecture.

The Riverside Landscape Architecture District was designated a National Historic Landmark in 1970. To retain its original aesthetic charm, the village even maintains 379 antique-style gas street lanterns.

Residents take great pride in the community's history and architecture, which is on display through tours at the Riverside Historical Museum and the Riverside Water Tower. Homes include well-maintained 1920s bungalows, huge Victorians, and early 20th century mansions.

The village features several restaurants including some that have been recognized as among the best in the Chicago area. There are also several unique boutiques and stores selling antiques and Victorian house fixtures – a nod to the town's rich architectural history.

Riverside students attend District 96 schools including four elementary schools and one junior high school. High school students attend Riverside Brookfield High School, part of the Riverside-Brookfield Township School District 208.

With a train station along Metra's BNSF Railway, Riverside is a short commute to Chicago's Union Station.









## JEFF BAKER

(708) 567-4901

JEFFBAKER@ATPROPERTIES.COM

BAKERSATBURLINGTON.COM



## SARA BAKER

(708) 567-5015

708-848-0200

SARABAKER@ATPROPERTIES.COM

BAKERSATBURLINGTON.COM



CHRISTIE'S  
INTERNATIONAL REAL ESTATE

168ADDISONROAD.INFO