

16W671 89TH PLACE
WILLOWBROOK



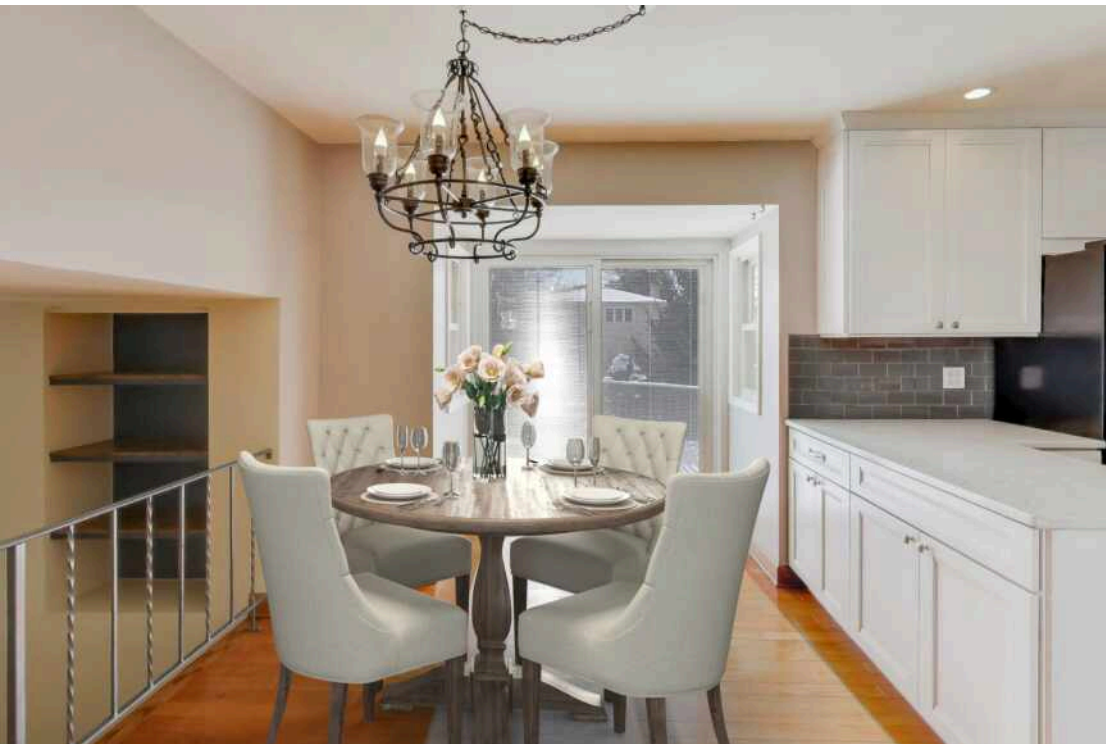


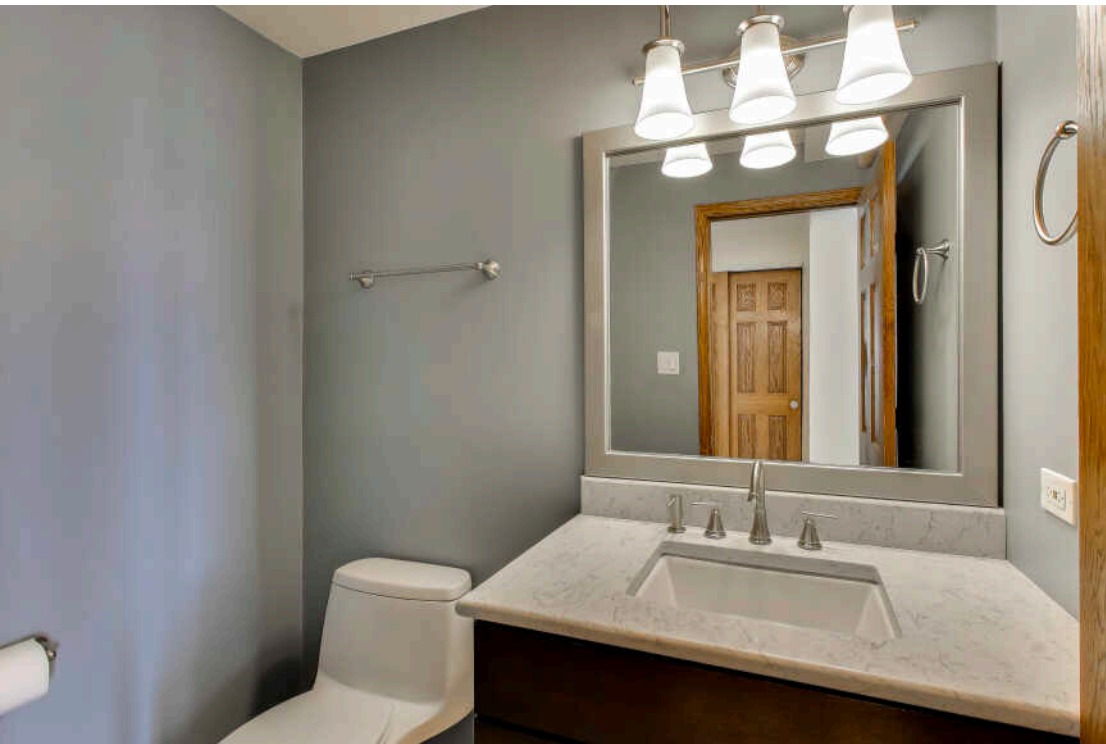
ROOM DIMENSIONS

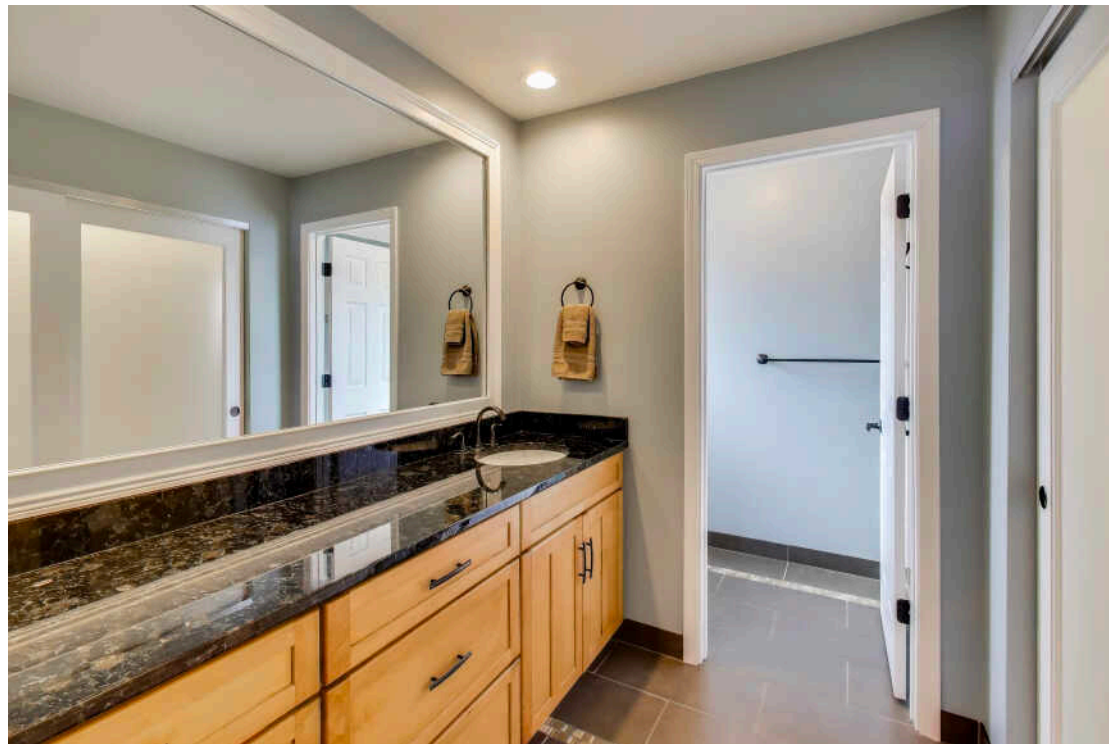
- FOYER : 15' × 7'
- LIVING ROOM : 20' × 15'
- DINING ROOM : 16' × 10'
- KITCHEN : 18' × 10'
- FAMILY ROOM : 27' × 17'
- MUDROOM : 6' × 13'
- PRIMARY BEDROOM : 18' × 15'
- SECOND BEDROOM : 15' × 12'
- THIRD BEDROOM : 11' × 12'
- REC ROOM : 16' × 17'

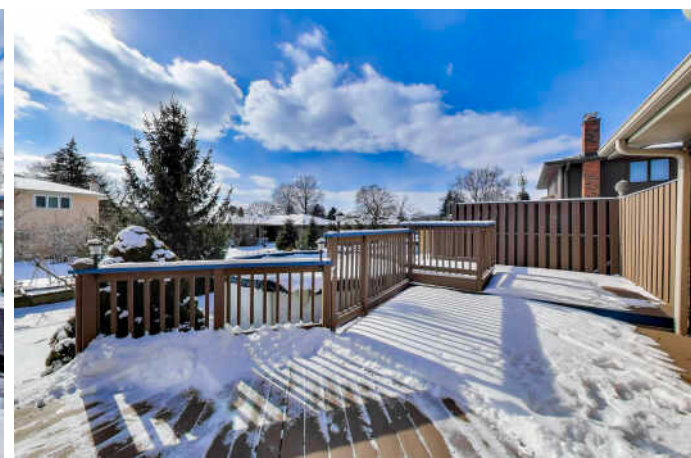
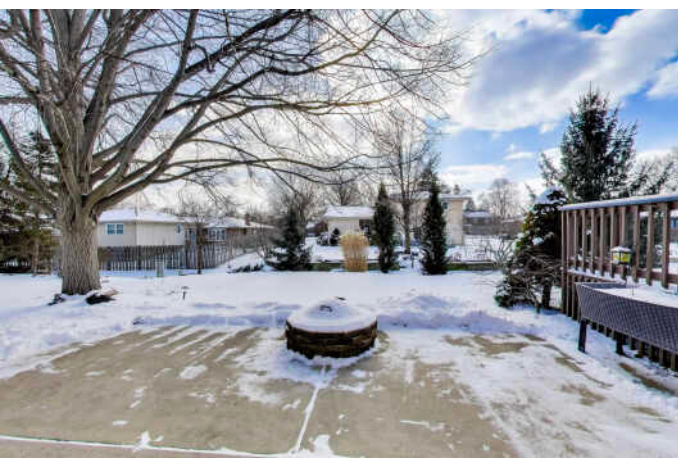
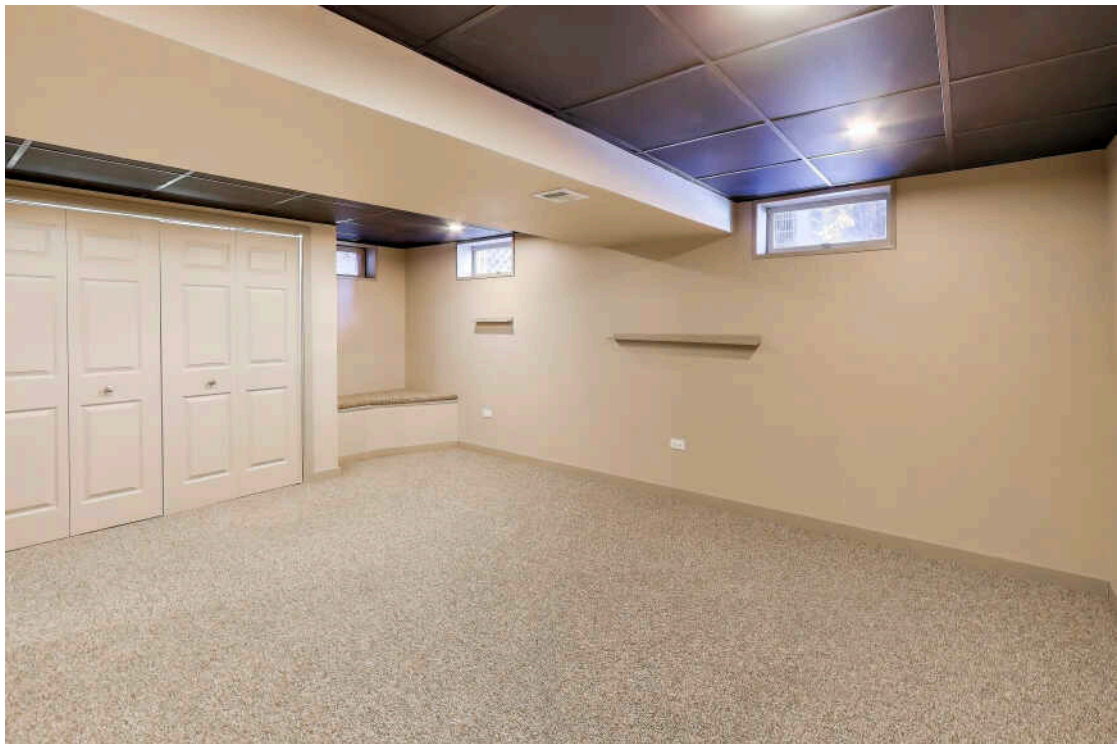
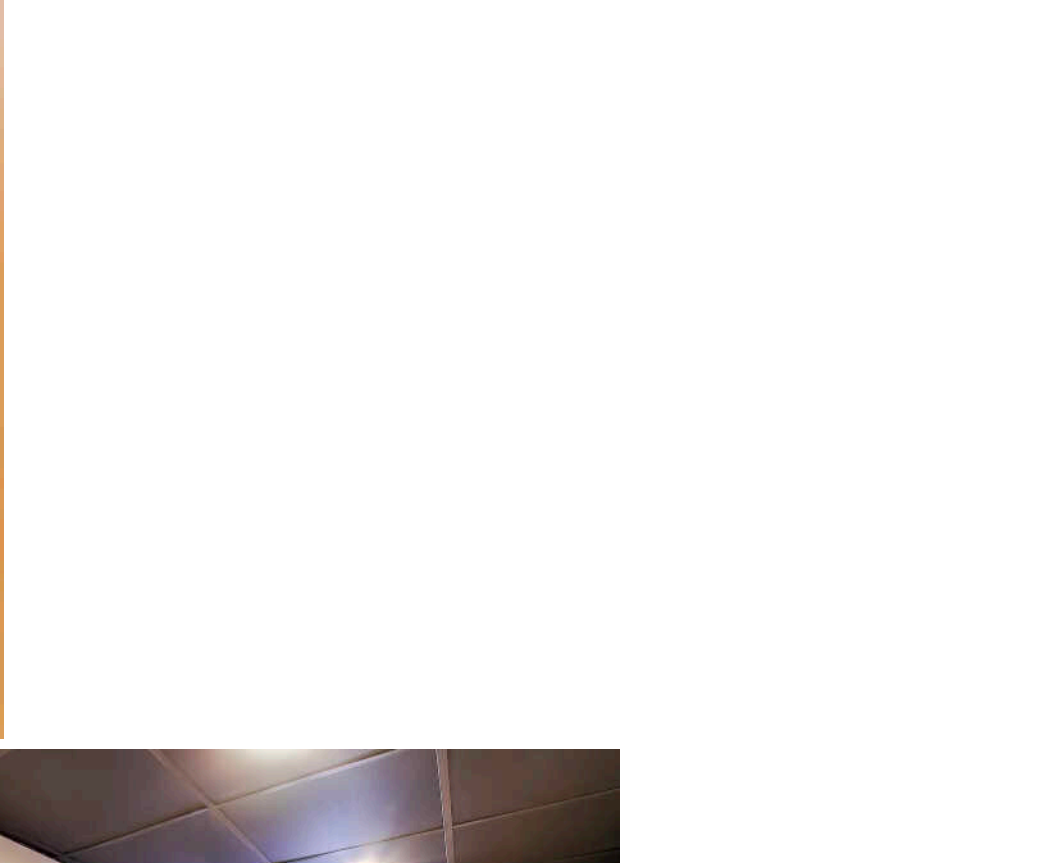
3 BEDROOM
2.5 BATH

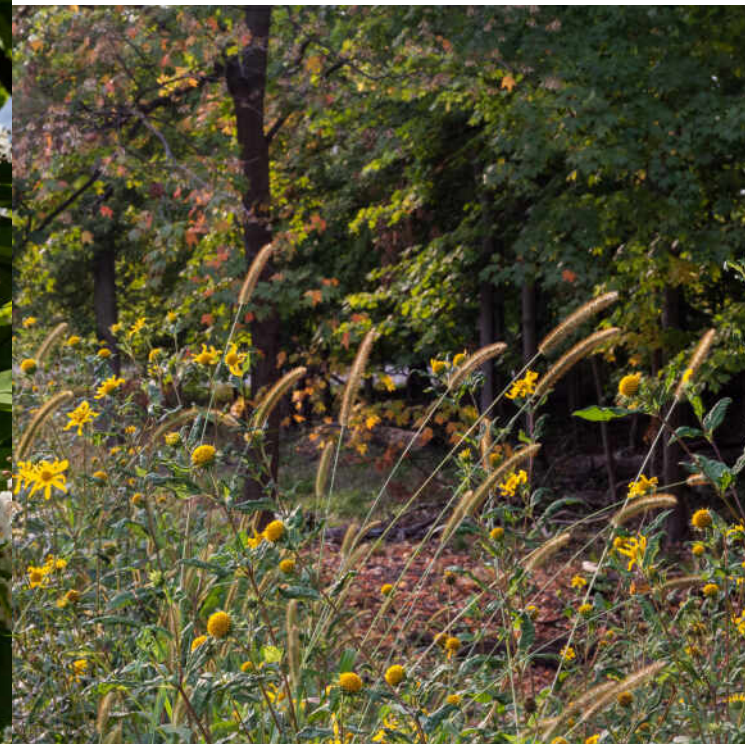
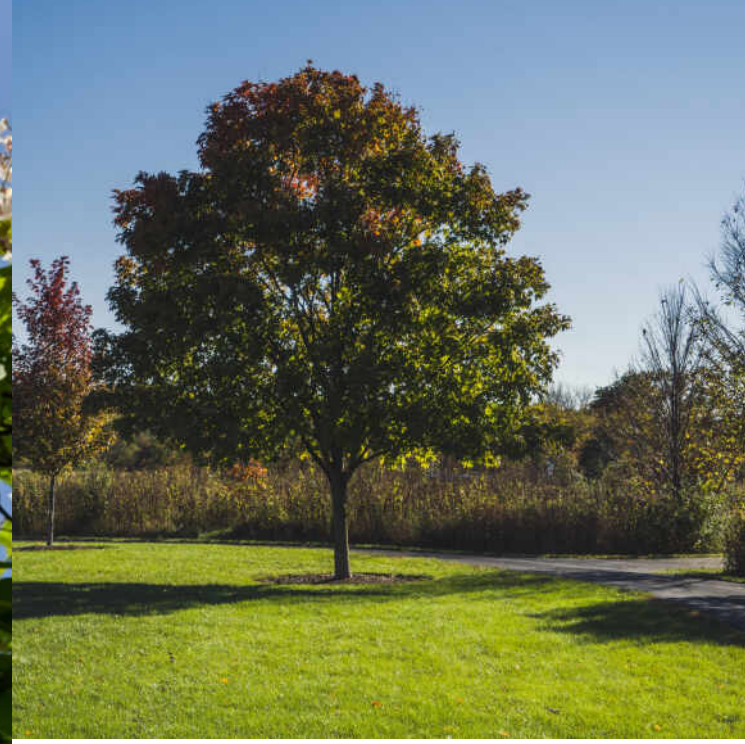
First impressions matter, and this beautifully updated Forrester model in sought-after Timberlake Estates delivers from the moment you arrive. The arched covered entryway leads you to dramatic double doors and a welcoming foyer with custom porcelain tile, open to living and dining rooms with soaring cathedral ceilings that instantly make the home feel bright and spacious. At the heart of the home is the remodeled eat-in kitchen with 42" Kraftmaid cabinetry, quartz countertops, hardwood floors, and a layout that keeps everyone connected-whether you're making breakfast or hosting friends. Just beyond, the oversized family room is where life happens, anchored by a cozy stacked-stone gas fireplace with custom oak mantle and complemented by a wet bar with granite counter, wine storage, and cabinetry. It's perfect for movie nights, game days, or holiday gatherings. Sunlight pours in through patio doors that lead outside to a backyard built for all four seasons: enjoy summer days by the swimming pool, fall nights around the fire pit, grilling on the two-level deck, and plenty of green space surrounded by mature trees, perennial gardens and a Tuff brand garden shed. Upstairs offers three bedrooms, including a private primary suite with two generous closets and a full bath. All bathrooms have Kraftmaid cabinetry, quarts/granite counter-tops, and tile floors. Extra spaces in the main-level and finished basement rec room add flexibility for work, play, and storage. With an attached 2.5-car garage, thoughtful updates throughout, and a peaceful, residential setting near Timberlake Park's trails, fishing pond, and playground-plus easy interstate access -this is a home designed to be lived in, enjoyed, and loved year-round.











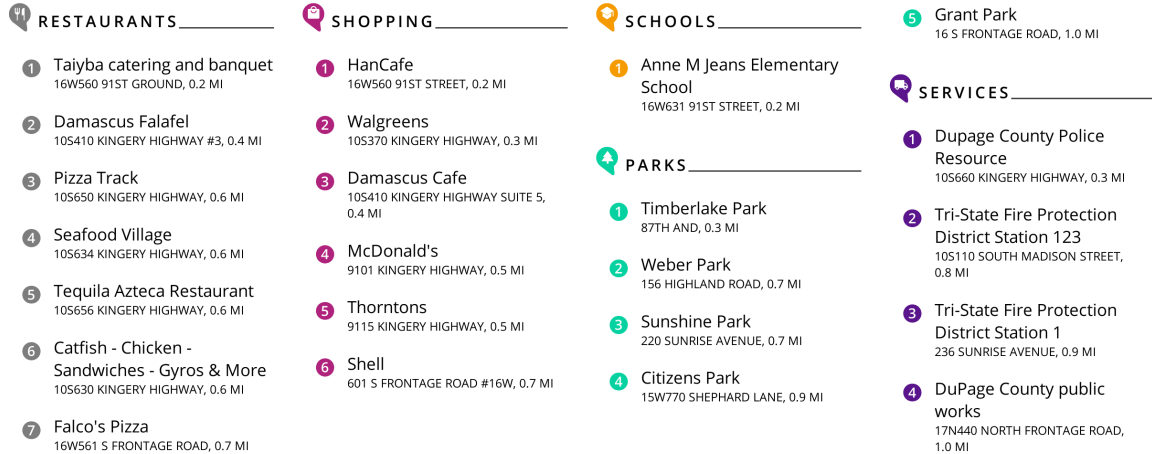
IF THERE'S ONE WORD TO DESCRIBE **WILLOWBROOK**, IT'S "CONVENIENT."

Located near several major thoroughfares, the charming village gives residents easy access to a number of Chicagoland destinations including downtown Chicago, Midway International Airport, and the regional business center of Oak Brook.

While small in size, Willowbrook offers an abundance of recreational opportunities. The community is home to 10 parks including Tony and Florence Borse Memorial Community Park, the largest in the area with ball fields, volleyball and basketball courts, a playground, and picnic pavilions. The fun doesn't stop there, as other local parks offer additional amenities such as tennis courts, sand volleyball courts, and fishing ponds.

Nearby Waterfall Glen Forest Preserve offers over 2,500 acres of gently rolling to hilly terrain where hikers, bikers, horseback riders, and cross-country skiers can venture through approximately 11 miles of trails, and nature lovers can explore 740 native plant species. Visitors can also go fishing or take on the orienteering course.

The community also boasts thriving retail centers like the Willowbrook Town Center, which offers a wealth of dining, shopping, and entertainment options. The Willowbrook Ice Arena is a premier destination for residents looking to hit the ice on an NHL-sized rink.

[illegible]



AGNES HALMON

(708) 209-6246

AGNES@ATPROPERTIES.COM

WWW.HIREAGNES.COM

Agnes
HALMON REALTOR®

@properties | **CHRISTIE'S**
INTERNATIONAL REAL ESTATE

All specifications, features, designs, price, assessments, taxes and materials are subject to change without notice. Depicted floor plans and architectural renderings are only an artist's impression.

