

1704 CHERRY COURT

LAKE VILLA





ROOM DIMENSIONS

LIVING ROOM : 27' × 18'

DINING ROOM : 13' × 12'

KITCHEN : 13' × 13'

PRIMARY BEDROOM : 16' × 16'

SECOND BEDROOM : 13' × 10'

THIRD BEDROOM : 12' × 10'

FAMILY ROOM : 32' × 18'

2ND KITCHEN : 16' × 15'

BILLARD : 19' × 17'

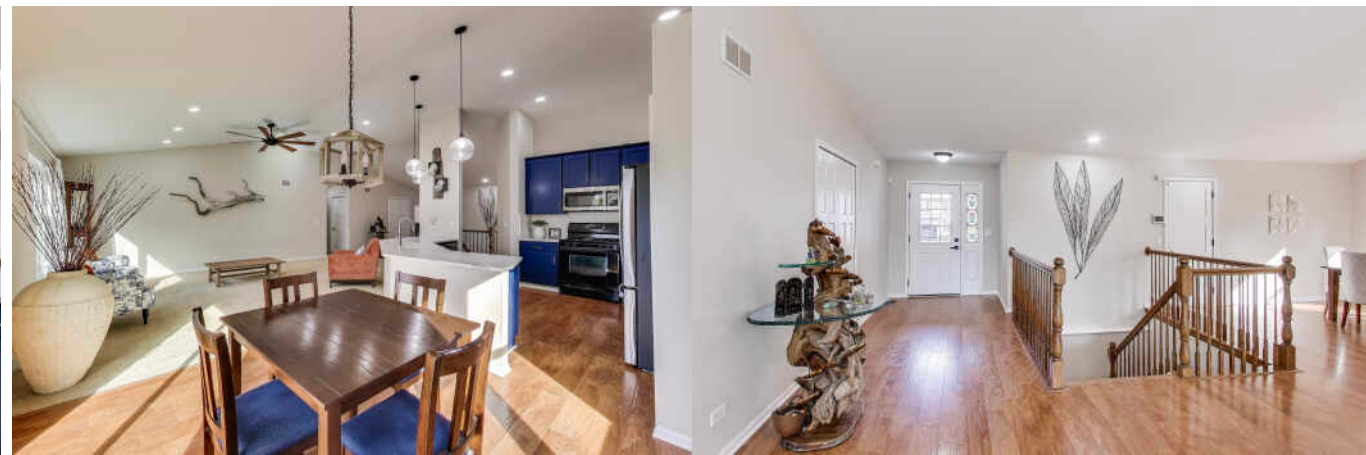
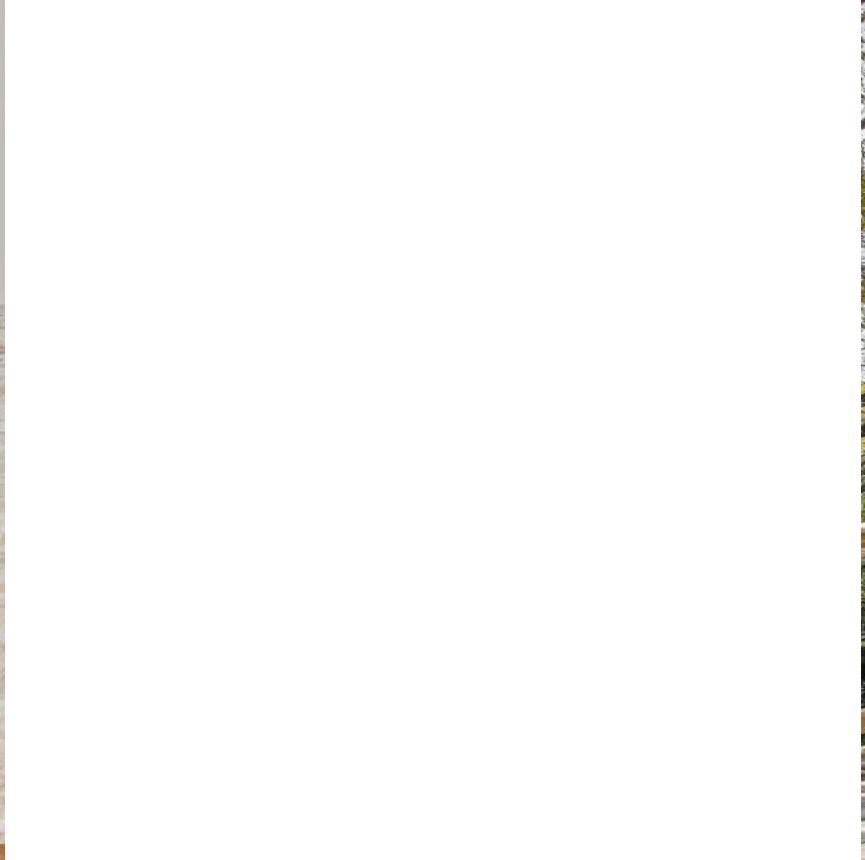
3 BEDROOM

3.1 BATH

TRANQUIL VIEWS, EFFORTLESS LIVING

With over 4,000 square feet of beautifully finished living space - this fabulous walk-out ranch offers stunning views, an open floor plan and inviting spaces perfect for entertaining family and friends.

- Updated Eat-In Kitchen Featuring New Quartz Countertops/Backsplash, Soft Close Custom Cabinet Doors, Fridge & Microwave - 2023
- Updated Hall Bath - 2023
- New Solid Core 3 Panel Doors - 2023
- Gas Log Fireplace with New Surround - 2023
- Walk-in Costco Pantry
- Primary Bedroom En Suite with Walk-in Closet
- Fenced-in Yard features Deck, Screened Porch, and Firepit
- 2 Car Attached Garage with Ample Storage
- New Driveway - 2023
- New Roof - 2023
- Siding, Soffits, Fascia & Stone Border - 2019
- Basement Windows - 2019
- 50 Gallon Water Heater - 2023
- Radon Mitigation System - 2023
- Main Floor Pella Windows warrantied thru 2030
- Choice Home Warranty Included thru March 2028 (\$75/Service Call)







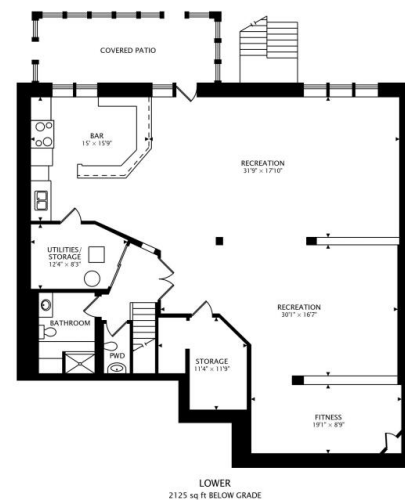
RAILROAD SERVICE AND THE ALLURE OF LAKESIDE LIVING DREW CHICAGOANS TO THE **LAKE VILLA** AREA

Located about 50 miles northwest of Chicago, the village was incorporated in 1901. Today it's home to more than 8,000 residents and a lot of lakes.

Residents enjoy several parks and recreational areas. The community hosts a number of events every year including the Memorial Day Parade. Forest preserves, swimming areas, boat launches, and trails make this a scenic destination.

Homes here include a variety of styles from ranches and traditional homes to Colonials.

Commuting downtown is convenient with the Lake Villa Metra station and nearby Tri-State Tollway.

[illegible]



SONIA CISTERNINO

REAL ESTATE BROKER, APPRAISER & ADVISOR

847.445.7477

SONIA@ATPROPERTIES.COM

SONIA \$ELL\$



All specifications, features, designs, price, assessments, taxes and materials are subject to change without notice. Depicted floor plans and architectural renderings are only an artist's impression.

