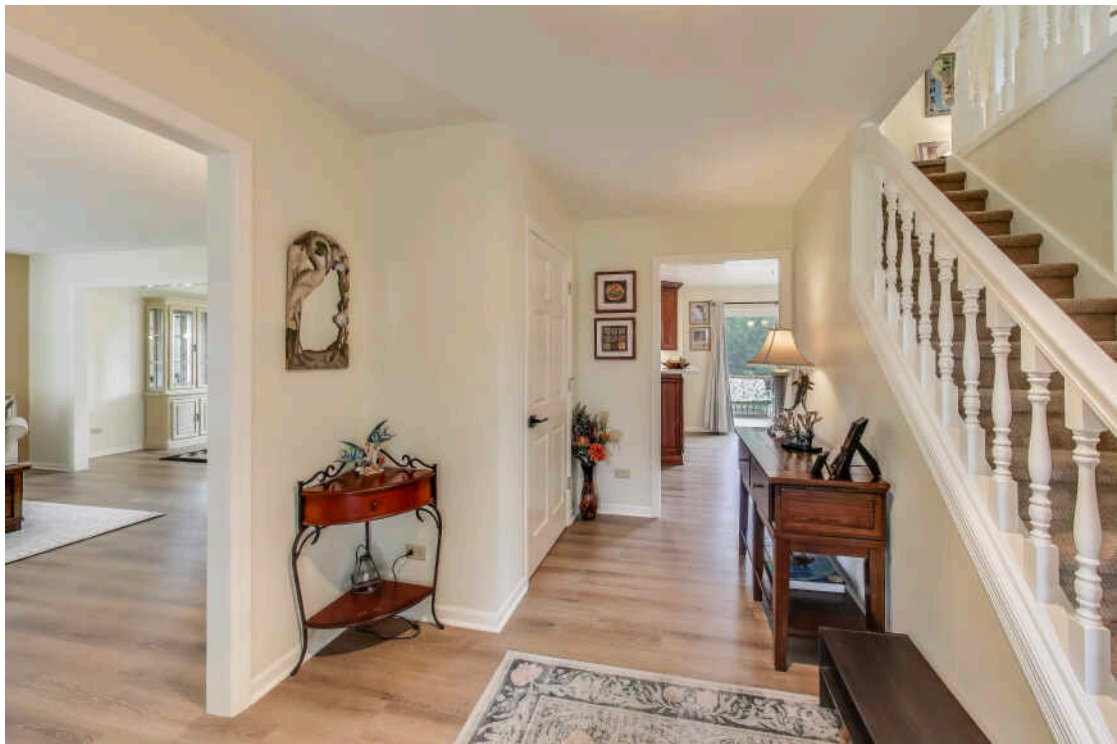


1710 ELM STREET
SPRING GROVE



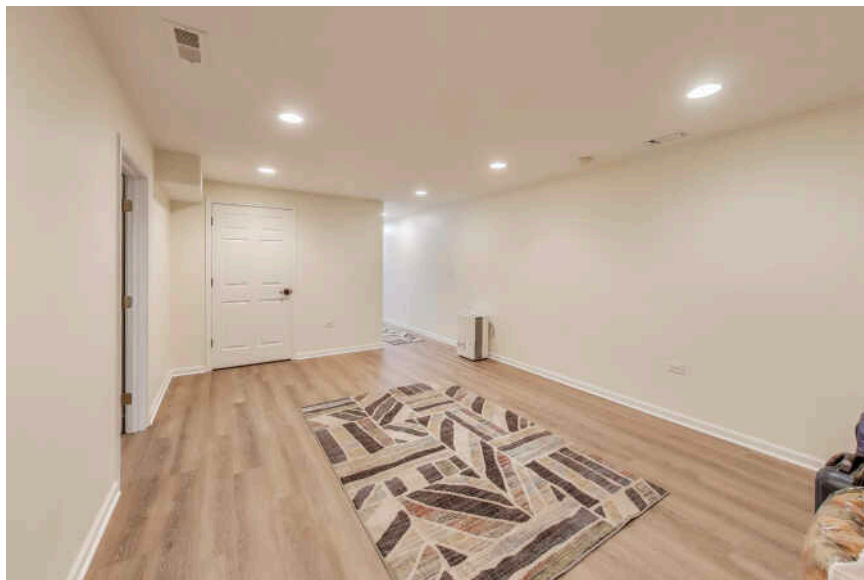
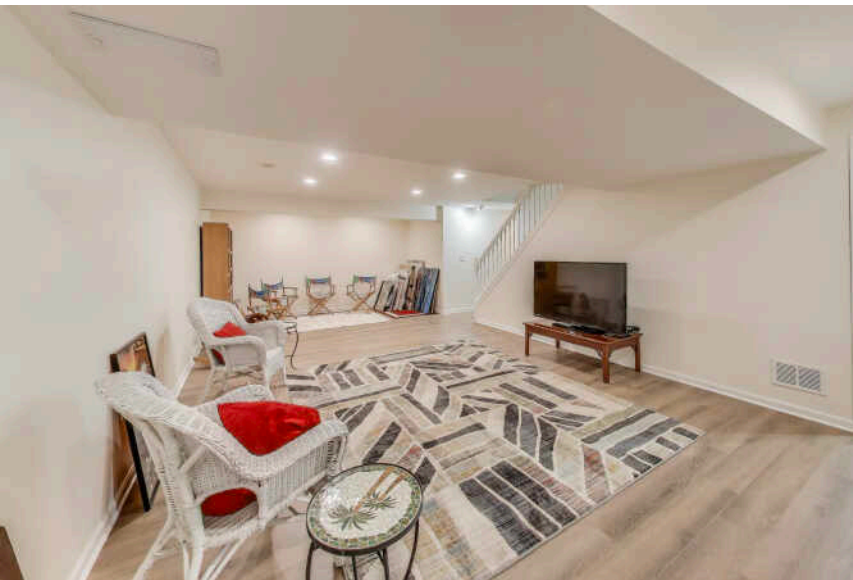


4 BEDROOM
3.1 BATH
TAXES: \$9,534
ASSESSMENTS: \$125 / YEAR

Gorgeous 2-Story in Orchard Bluff Estates! Set on a beautifully landscaped 1-acre corner lot in one of Spring Grove's premier neighborhoods, this stunning 3,600+ sq. ft. home blends timeless design with modern updates and thoughtful details throughout. Step inside to a foyer that opens to the freshly painted living and dining rooms with brand-new flooring. The heart of the home is the newly refreshed kitchen featuring cherry cabinetry, quartz countertops, glass tile backsplash, stainless steel appliances, under-cabinet lighting, and a sunny breakfast area with sliders to the expansive deck. The spacious family room impresses with soaring ceilings and a Heat-N-Glo sealed gas fireplace insert framed by an updated mantle. Upstairs, a versatile loft and three bedrooms offer plenty of flexibility. The luxurious primary suite boasts a tray ceiling, walk-in closet, and a beautifully updated bath with quartz dual vanities, Kohler fixtures, jetted tub, custom shower, and direct ceiling heat for added comfort. The hall bath has also been refreshed with modern finishes and upgraded lighting. The finished basement expands the living space with a large family room, a den ideal as a 4th bedroom, a full bath, craft room, and generous storage. The oversized 3+ car garage is fully finished with drywall, bright lighting, new openers, keyless entries, attic storage, and a new side entry door. Outdoors, enjoy a large deck with accent lighting, a brick paver walkway, and a spacious shed with electricity. All of this in a friendly neighborhood setting-just steps to the park, and minutes from Lake Geneva, Metra, Wilmot Mountain, and Chain O'Lakes State Park. Major updates inside & out: New windows & front entry door (2022), New roof & A/C (2017), Well pump (2025), Luxury vinyl plank flooring with limestone (2021), All new kitchen appliances (2022), New washer & dryer (2022), Whole-house Kinetico water softener & Applied Membranes filtration (2022), Reverse osmosis system for refrigerator & ice (2023), Exterior siding, soffit, fascia, oversized gutters w/ leaf filter screens (2022), Professionally landscaped with pines, arborvitaes, perennials & lighting (2022-2023). Move-in ready and better than new, this Orchard Bluff Estates gem is the perfect place to call home. Don't miss your chance-schedule a showing today!











ONE OF MCHENRY COUNTY'S FASTEST-GROWING MUNICIPALITIES, **SPRING GROVE** DRAWS THOSE SEEKING SMALL-TOWN CHARM WHILE STILL ENJOYING CONVENIENT ACCESS TO CHICAGO.

Downtown Spring Grove is home to a small selection of restaurants and shops, but the town is perhaps better known and aptly named for the natural springs and groves of trees found throughout the area. There are several parks in the heart of Spring Grove, and in addition to plenty of green space, there are ball fields, fishing locations, and canoe launches. Spring Grove also offers access to Chain O'Lakes State Park, featuring hiking and biking trails, picnic areas, fishing, and an equestrian trail.

Located just south of the Wisconsin state line, Spring Grove has a variety of housing options from new construction to existing single-family homes. The landscape lends itself to sprawling plots of land that offer both privacy and natural beauty, as well as subdivisions that provide lively neighborhoods.



NOTES



AMBER CAWLEY

(847) 293-4782

AMBERCAWLEY@ATPROPERTIES.COM

HOMESBYCAWLEY.COM



CHRISTIE'S
INTERNATIONAL REAL ESTATE

All specifications, features, designs, price, assessments, taxes and materials are subject to change without notice. Depicted floor plans and architectural renderings are only an artist's impression.

