

1712 W LE MOYNE STREET #2E
WICKER PARK

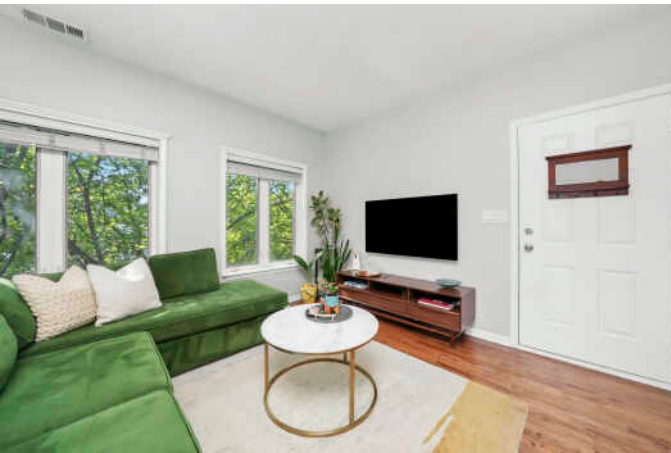


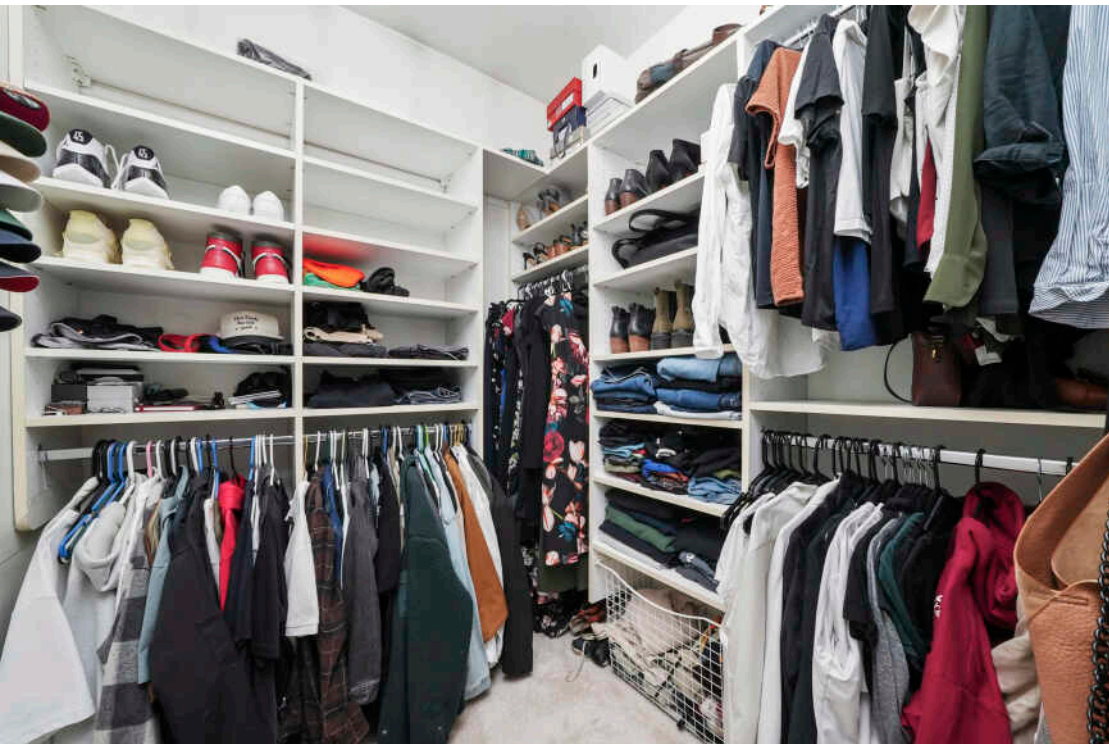


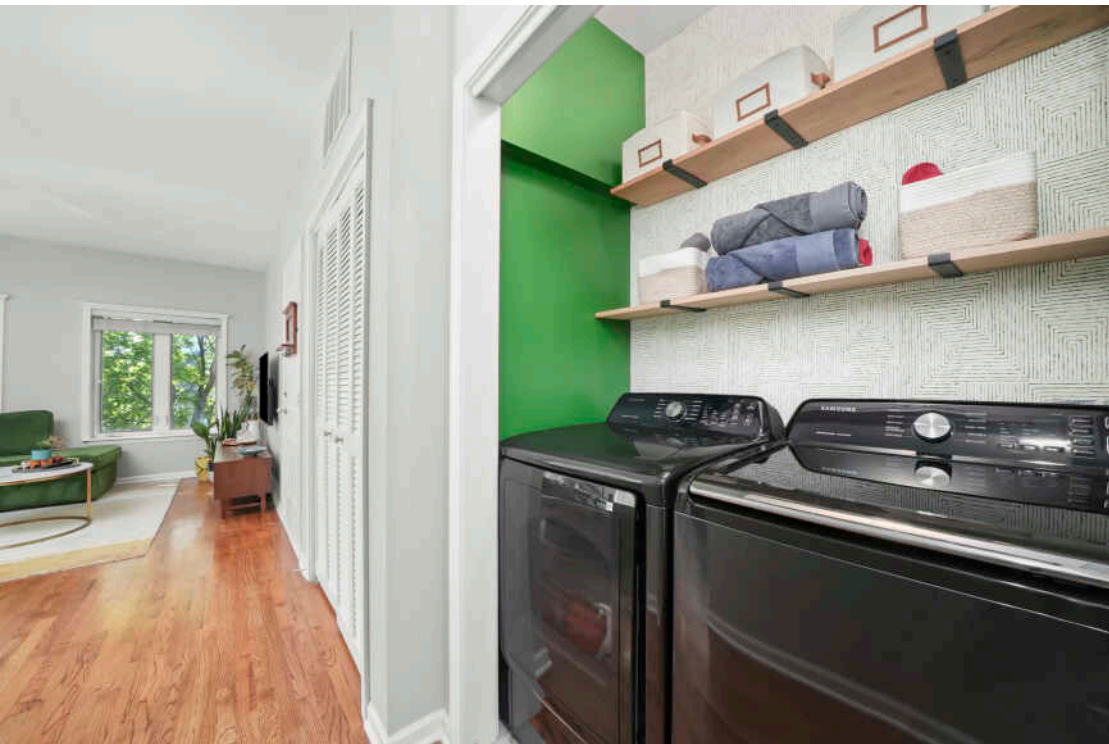
2 BEDROOM
2 BATH

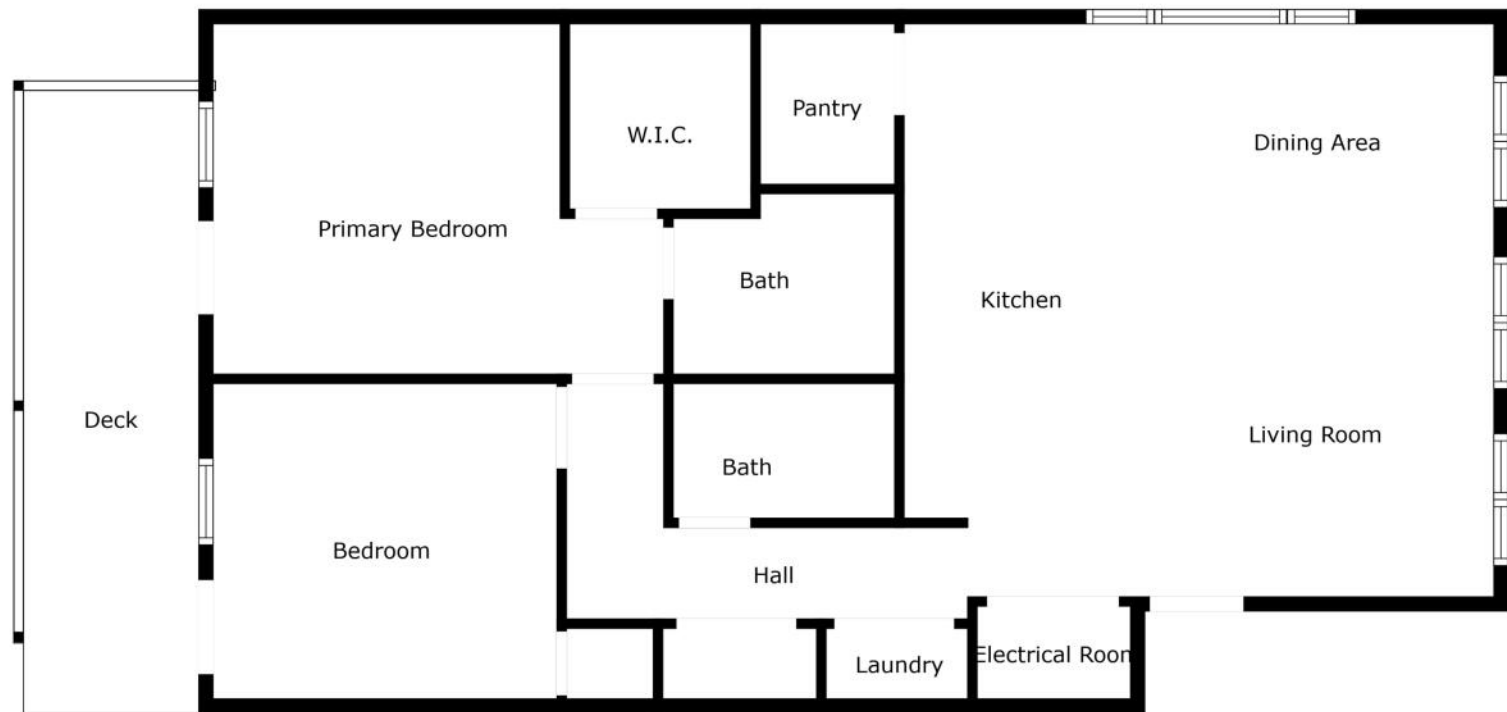
BEAUTIFUL 2 BED/ 2 BATH CONDO THAT OFFERS AN EXTRA WIDE LAYOUT WITH 9' CEILINGS AND AN ABUNDANCE OF STORAGE, A LONG BACK DECK, AND ON A BEAUTIFUL TREE LINED STREET IN BUCKTOWN/ WICKER PARK.

It is filled with ample amounts of sunlight from East & North corner windows. Entertain in this white modern kitchen with shaker cabinet and a large gray island with beautiful modern glass pendant lighting, granite counter tops and newer stainless steel appliances(2023). Living, kitchen and dining room open concept layout, newer refinished stained hardwood floors, and enjoy your walk-in pantry closet. The large primary bedroom offers a beautiful accent square panel wall, Elfa organized walk-in closet, newer gray carpet, recently updated en-suite bathroom with slate gray tiling for the floor, white subway tile walk in shower, new vanity lights and mirror. Second bedroom has recently laid new hardwood floors, and organized closets. Second bathroom has modern vanity, honeycomb marble tiles, and white tiled shower with tub. Massive coat closet, and laundry closet with newer side by side washer and dryer(2022), newer furnace (2023)! Garage parking and an additional very large walk-in storage room included. Ideal Bucktown/ Wicker Park location on a quiet tree-lined side street, close to parks/playlots, 606 Trail, dining, shopping and nightlife, short walk to two blue line trains, Metra train, easy access to the highway and more!

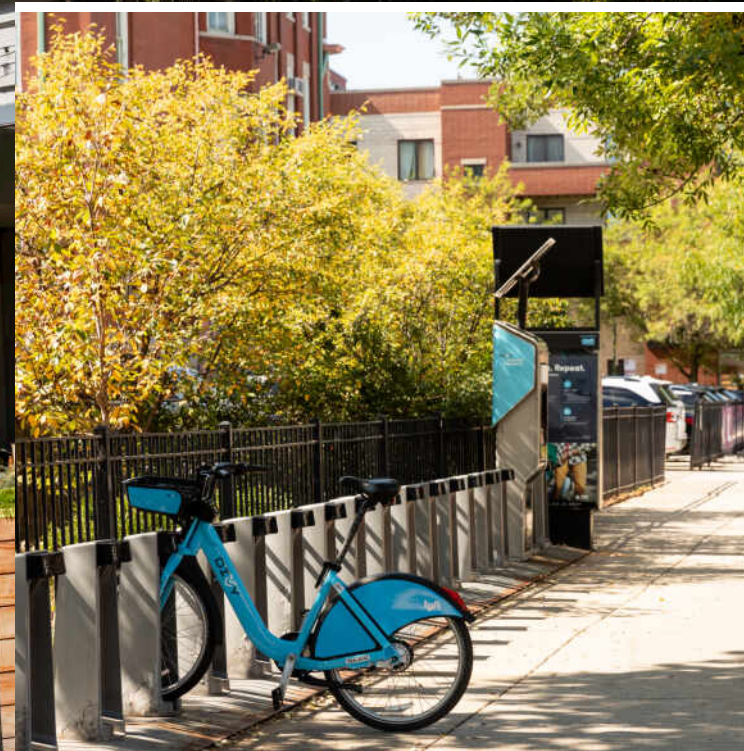








Floor Plan Created By Prestige Real Estate Images. Measurements Deemed Highly Reliable But Not Guaranteed.



RESIDENTS AND BUSINESSES FLOCKED TO **WICKER PARK** TO REBUILD AFTER THE GREAT CHICAGO FIRE OF 1871. TODAY, CHICAGOANS FLOCK TO THE HIP, HAPPENING NEIGHBORHOOD FOR ITS EATERIES, ARTS AND ENTERTAINMENT.

Wicker Park boasts an eclectic assortment of cafes, independent stores, dive bars, upscale boutiques, art galleries and city parks including four-acre Wicker Park. The neighborhood is home to some of Chicago's most popular and acclaimed restaurants, elevating pizza and tacos to foodie fare and offering a wide variety of options for drinking and dining pleasure.

Located just south of Bucktown and northwest of The Loop, the neighborhood includes large historic 19th century brick and stone mansions and landmark Victorian homes on tree-lined streets. Modern new construction condominiums and single-family homes along with vintage walk-ups, three-flats and lofts round out the diversity of housing available.

Like neighboring Bucktown, Wicker Park's notable commercial architecture remains - re-imagined, redeveloped and restored. The iconic Flat Iron Arts Building, home to artists who moved to the neighborhood in the 1980s, still houses various art studios and local businesses today.

The CTA Blue Line offers convenient access to The Loop and O'Hare International Airport, while the Kennedy Expressway allows for an easy drive to surrounding neighborhoods and suburbs.



HANNAH ROESCH

8477670299

847-381-0300

HANNAHROESCH@ATPROPERTIES.COM

