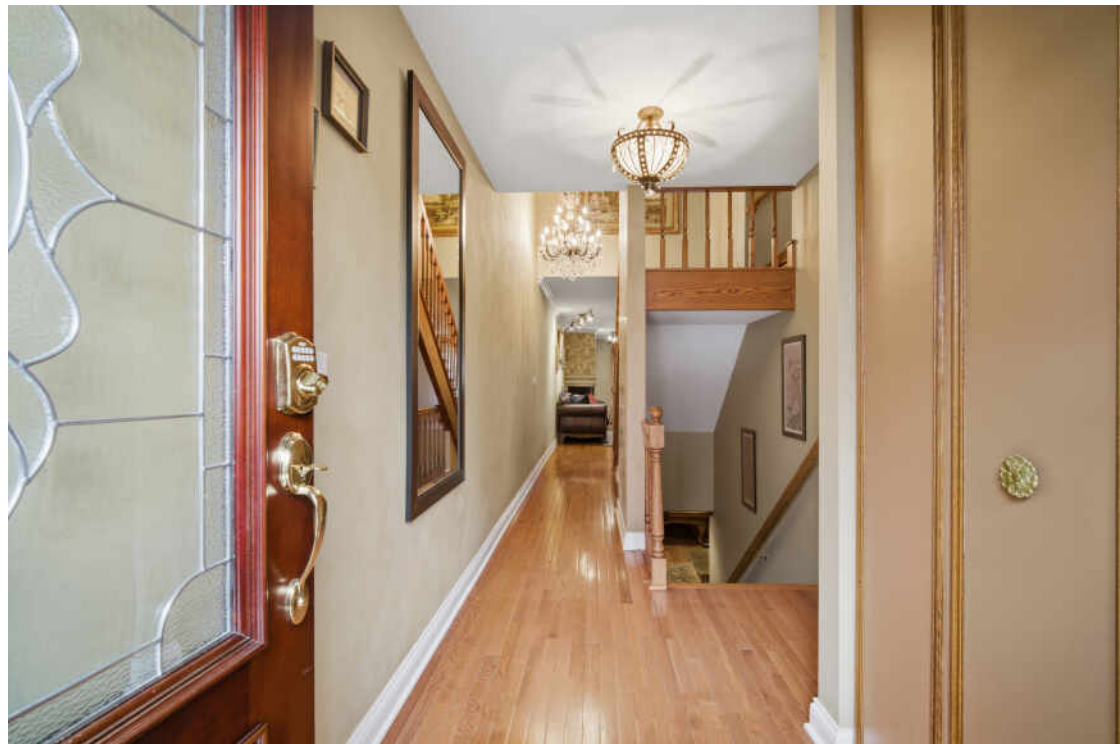


1716 WILDBERRY DRIVE #J
GLENVIEW

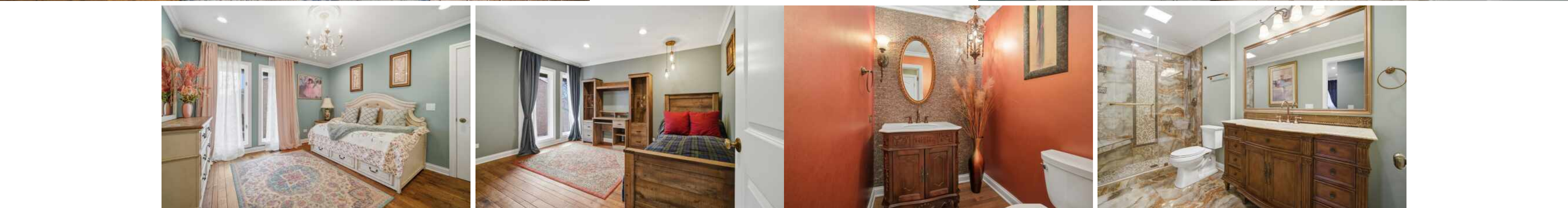


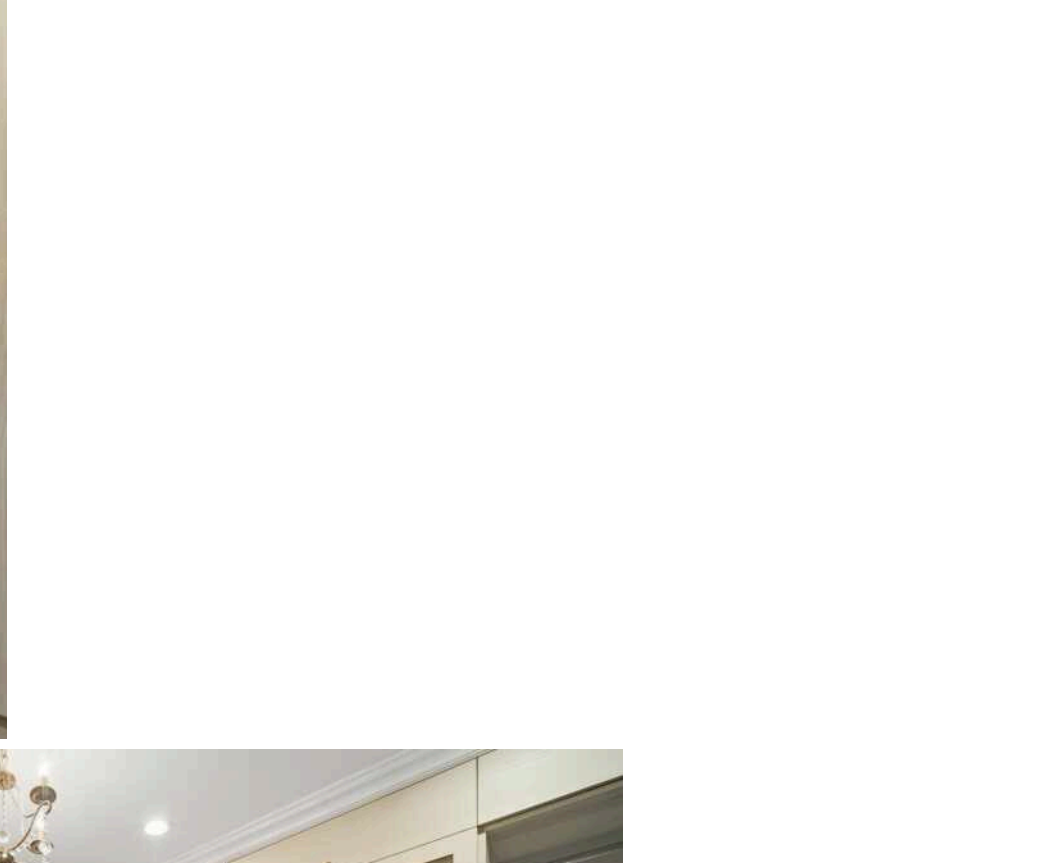


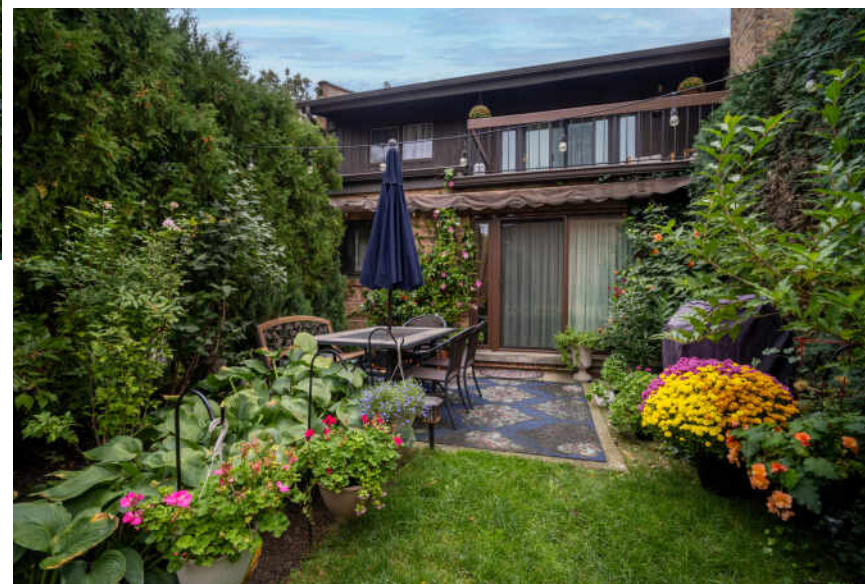
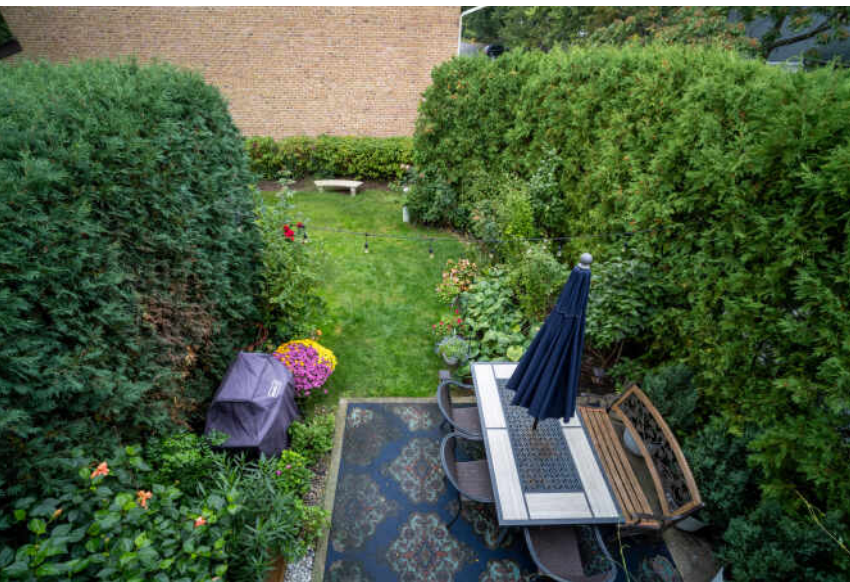
WELCOME HOME! Spacious, sun-filled end-unit in a highly sought-after Glenview location! This beautifully maintained home features hardwood floors throughout and a bright, welcoming layout perfect for comfortable living. Step out from the living room to your own private patio and lush yard. An inviting oasis with a peaceful, secluded feel. The oversized primary suite is a true retreat, complete with a private balcony and two walls of professionally organized closets. The lower level offers a huge family room, a dedicated laundry area, and abundant storage space. Enjoy your summers with pool access. Ideally located near The Glen, offering premier shopping, dining, parks, and entertainment. Close to Metra, the Glenview Public Library, and top-rated Glenview schools. This home combines space, convenience, and an unbeatable location!

3 BEDROOM
2.1 BATH









TOTAL: 2332 sq. ft
 Basement: 548 sq. ft, 1st floor: 779 sq. ft, 2nd floor: 1005 sq. ft
 EXCLUDED AREAS: STORAGE: 68 sq. ft, UTILITY: 162 sq. ft, GARAGE: 393 sq. ft,
 PATIO: 113 sq. ft, OPEN TO BELOW: 26 sq. ft, BALCONY: 106 sq. ft,
 WALLS: 170 sq. ft

All Dimensions Are Highly Reliable But Not Guaranteed



JUST 20 MILES FROM DOWNTOWN CHICAGO, **GLENVIEW** IS A DESTINATION IN ITS OWN RIGHT.

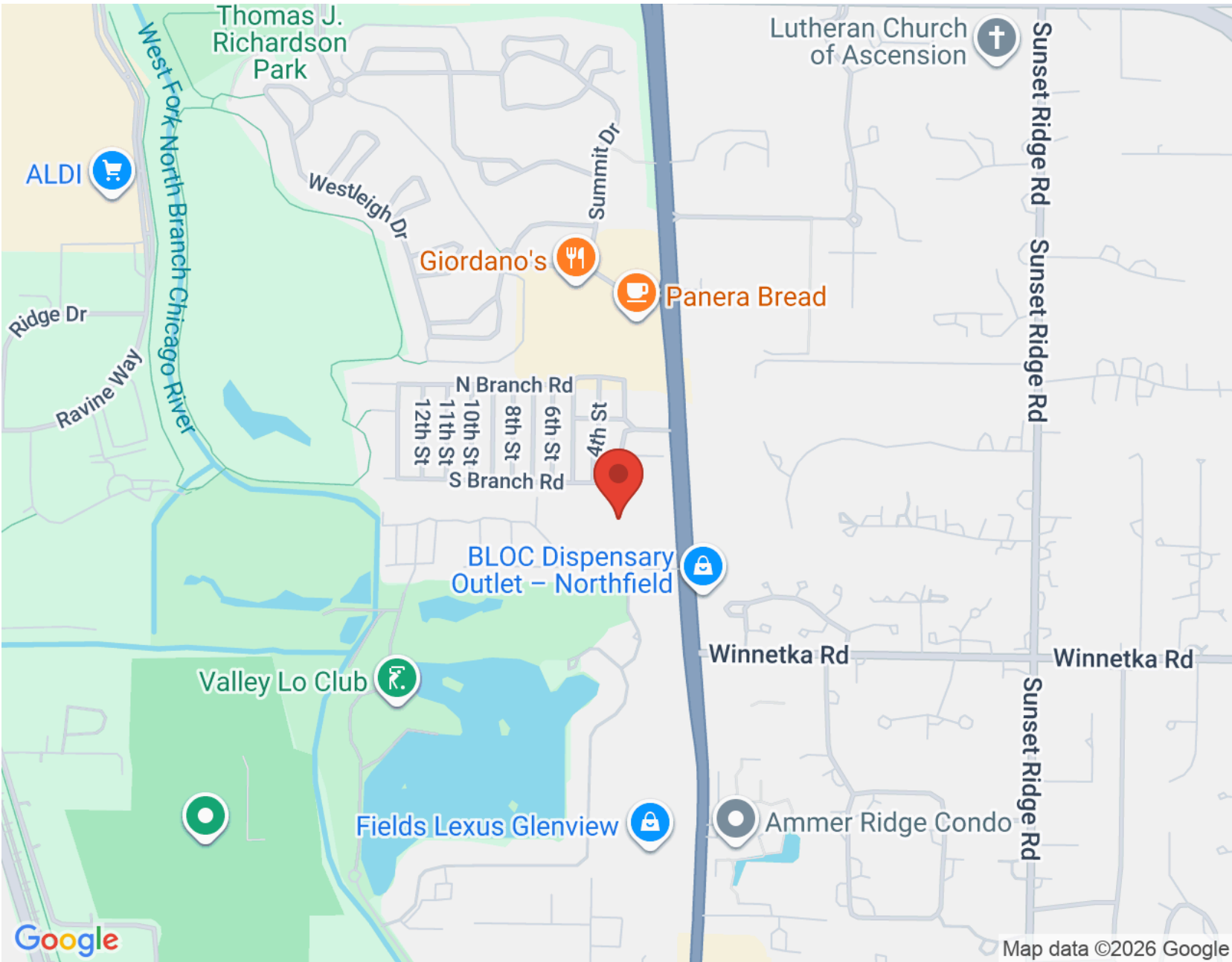
The scenic North Shore town has expanded rapidly thanks to its established neighborhoods, convenient access to transportation, and array of amenities.

More than 45,000 people call Glenview home, with properties ranging from townhomes and condominiums to luxury custom homes featuring the latest amenities. Newer homes can also be found at The Glen, a large development on the site of the former Glenview Naval Air Station that offers an assortment of shops and restaurants, a movie complex, the Kohl Children's Museum, and access to one of the town's two Metra stations.

Glenview is served by a number of public and private schools, including Glenbrook South High School, ranked among the top in the nation according to Business Insider.

The Glenview Park District offers indoor and outdoor pools, golf courses, soccer fields, nature trails, an ice center, tennis club, and multi-purpose community center.

In addition to modern development, Glenview celebrates and preserves its early days with two notable attractions: Wagner Farm and The Grove. A 20-acre working farm, Wagner Farm has hands-on programs - horseback riding, tractor driving, and other activities - that reflect a day in the life of a 1920s farmer. The Grove, a National Historic Landmark, includes a prairie, nature trails, historic buildings, and a log cabin that dates back to the 1850s.



NOTES _____



RENATA ZELINSKAYA

847.791.2088

RENATAZELINSKAYA@ATPROPERTIES.COM

INSTAGRAM.COM/SELLINIT.WITH.RENATA_REALTOR

FACEBOOK.COM/SELLINITWITHRENATAREALTOR

