

1725 N MOHAWK STREET #2S
OLD TOWN

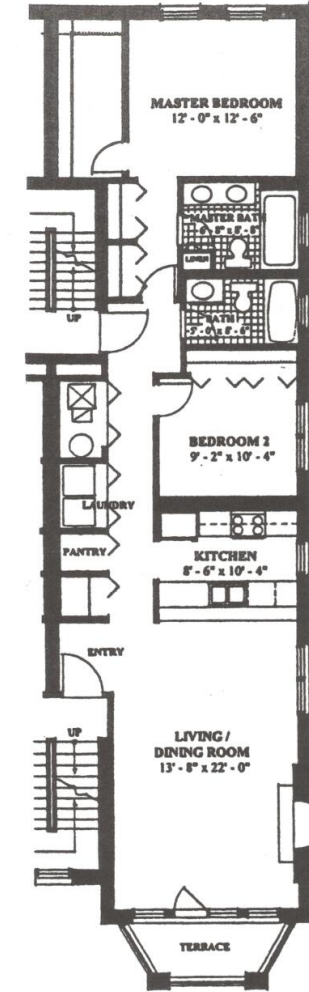
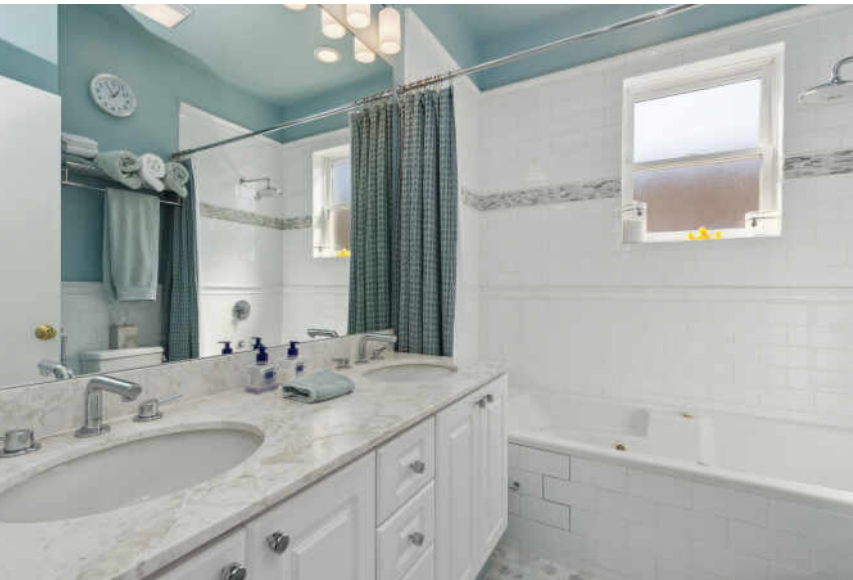




2 BEDROOM
2 BATH

- Turnkey home, perfectly located in the heart of Old Town
- Spacious living room, with fireplace and adjacent terrace, and ample room for a dining table
- South-facing, sun-filled windows throughout
- Kitchen features Bosch appliances, step-in pantry, quartz countertops, and newly painted cabinets
- Both baths were totally remodeled with tasteful glass and subway tile, marble hexagon flooring and Hansgrohe fixtures
- Complete separation from the only other neighbor on the floor with front and back stairways and a wall of closets
- All closets have custom built-ins for maximum storage efficiency
- Huge 6' x 9' private storage closet in the basement
- Generous and secure garage space off alley included
- Quiet, tree-lined block and building
- All the best that Lincoln Park and Old Town have to offer within walking distance
- Low assessments; proactive self-managed association





BASEMENT STORAGE:
5.90' x 9.30'
GARAGE SPACE:
7.67' x 19.72'

1725 North Mohawk – Unit #2S



LINCOLN PARK RESIDENTS HAVE IT ALL – FROM THE ARTS TO ITS FAMED ZOO – RIGHT IN THEIR BACKYARD.

The neighborhood includes quiet tree-lined residential blocks, DePaul University, and two major museums in addition to the Lincoln Park Zoo, one of the country's oldest zoos. There's also a wide array of entertainment, eateries, and hotspots.

An evening in Lincoln Park might include seeing a play at the acclaimed Steppenwolf Theatre and dining at a Michelin-rated restaurant or a quaint neighborhood café. Sports fans will find as many dive bars with the game on as foodies will find fine-dining restaurants with al-fresco seating.

Lincoln Park is just as delightful by day. Residents are close to the lakefront and North Avenue Beach, parks, farmers markets, festivals, and countless shops, ranging from upscale boutiques on Armitage to larger retailers at the Clybourn Corridor.

Housing stock ranges from smaller townhomes and vintage condominiums to rehabs and new construction. Buyers around DePaul University can find loft condominiums in converted factories and warehouses. On its eastern edge, Lincoln Park features beautiful vintage brownstones along with high-rises with breathtaking views of the lake, park, North Pond Nature Sanctuary, and city skyline.

Located just two miles from downtown, Lincoln Park offers residents a quick commute to work. Public transportation abounds, with the CTA's Brown and Red lines serving the neighborhood in addition to several bus routes and Lake Shore Drive.



COFFEE SHOPS

 SHOPPING

HEALTH CLUBS

FFC Lincoln Park
939 WEST NORTH AVENUE SUITE 750,
0.6 MI

 SCHOOLS

Abraham Lincoln Elementary
School
615 WEST KEMPER PLACE, 0.7 MI



North/Clybourn
CTA - RED LINE, 0.4 MI

Armitage
CTA - PURPLE LINE, 0.6 MI



ELLEN WEBBER

(773) 350-7773

ELLENWEBBER@ATPROPERTIES.COM



CHRISTIE'S
INTERNATIONAL REAL ESTATE