

17273 HERITAGE DRIVE
SOUTH HOLLAND





ROOM DIMENSIONS

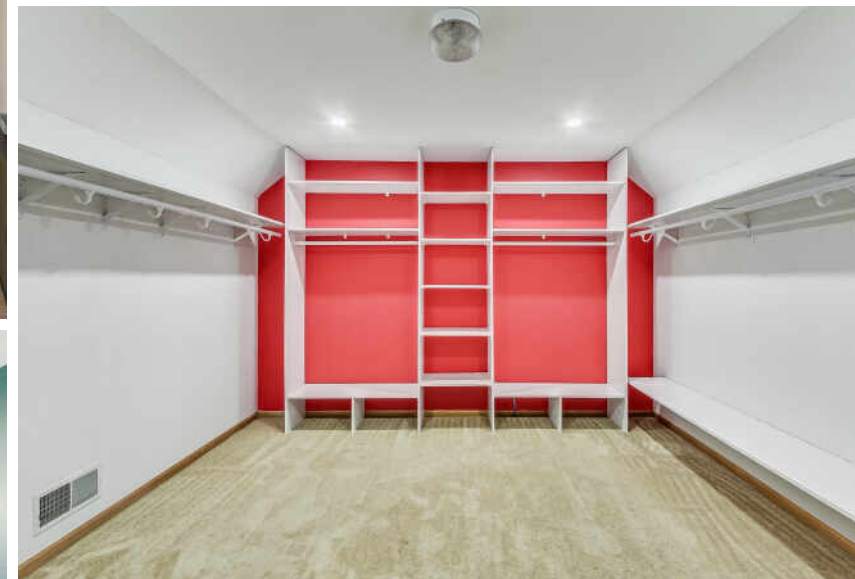
FOYER : 5' × 8'
LIVING ROOM : 15' × 12'
DINING ROOM : 13' × 12'
FAMILY ROOM : 15' × 21'
BREAKFAST AREA : 13' × 10'
KITCHEN : 11' × 12'
LAUNDRY ROOM : 6' × 11'
BEDROOM 1 : 12' × 12'
BEDROOM 2 : 15' × 12'
BEDROOM 3 : 12' × 12'
PRIMARY BEDROOM : 18' × 17'
DEN : 10' × 12'
WALK-IN CLOSET : 12' × 12'
RECREATION AREA 1 : 30' × 11'
RECREATION AREA 2 : 15' × 15'
STORAGE/EXERCISE ROOM : 16' × 16'

4 BEDROOM
3.5 BATH
TAXES: 10814.79

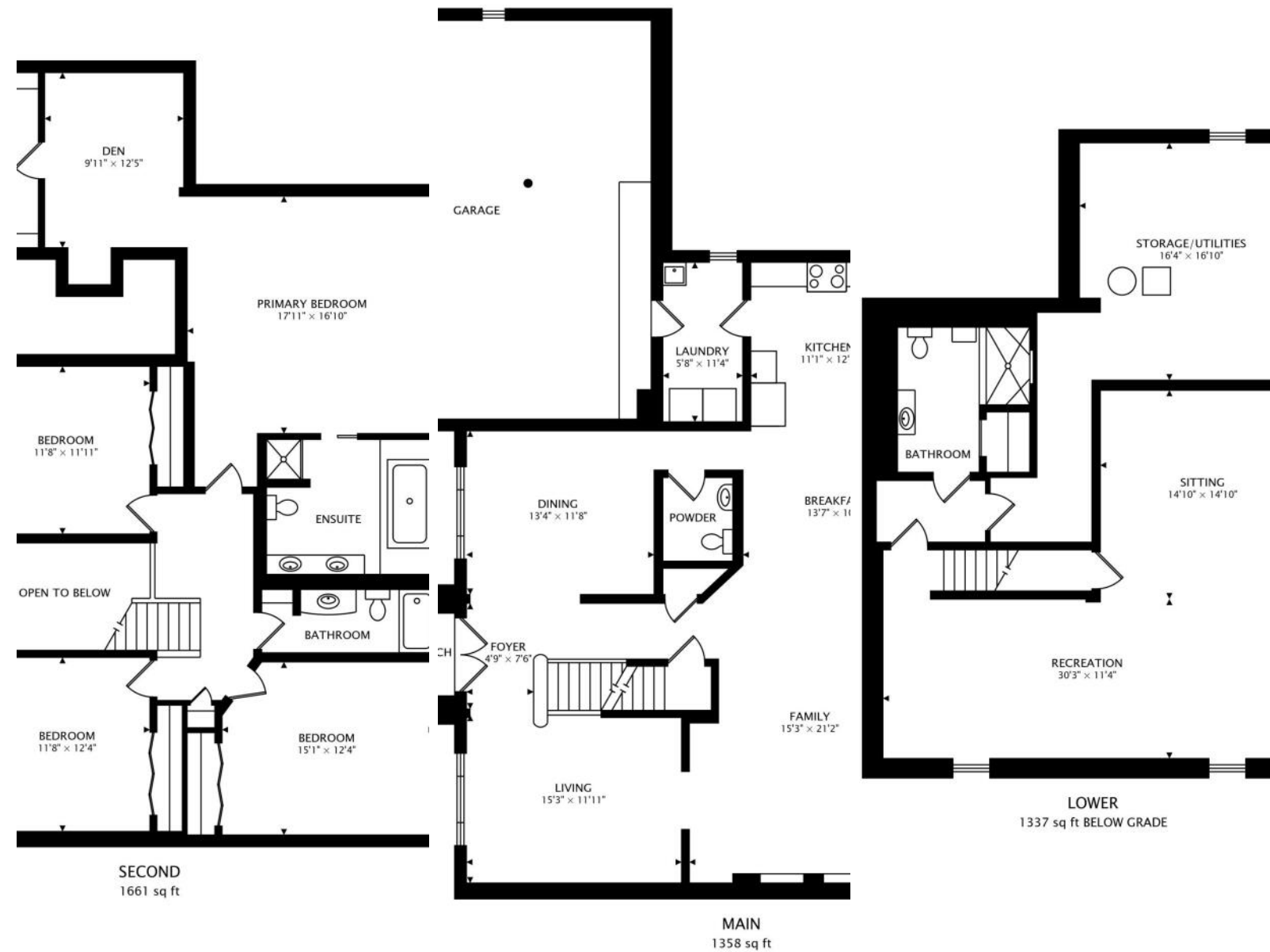
WELCOME

This 4-bed/3.5-bath home is over 3000 square feet of living space with an additional 1337 square feet in the finished basement. Step inside this double door entry to this sunlit 2-story foyer where a striking chandelier and wrought iron staircase greet you and your guests. This main level features hardwood floors throughout, a separate dining room, formal living room, half bath, spacious family room with modern fireplace, and an open floorplan with eat-in kitchen, abundance of cabinetry, glass backsplash, granite countertops, and full-size laundry/mud room that leads to your attached 3-car garage. Adjacent to the kitchen, the sliding glass patio door leads to a spacious deck and fully fenced backyard and side yard that offers plenty of space for gardening, entertaining, or leisure. Second level features an oversized owner's suite and 3 guests bedrooms with nicely appointed hall bath. The primary suite offers an oasis with its large bedroom, separate den, huge/desirable walk-in closet and spacious spa-like bathroom with jetted tub. The finished basement features open floorplan with its large L-shaped recreation area, massive bathroom with sauna, and storage/workout room. This home is full of endless possibilities.

- Some photos have been virtually staged.









NOTES

[illegible]



NICK LOVETT

708.955.1983

7088480200

BUYNLOVETT@ATPROPERTIES.COM



CHRISTIE'S
INTERNATIONAL REAL ESTATE