

1727 S INDIANA AVENUE 415
PRAIRIE DISTRICT





ROOM DIMENSIONS

MASTER BEDROOM : 16' × 14'

BEDROOM #2 : 16' × 10'

BEDROOM #3 : 11' × 8'

LIVING ROOM : 17' × 14'

DINING ROOM : 9' × 8'

KITCHEN : 11' × 10'

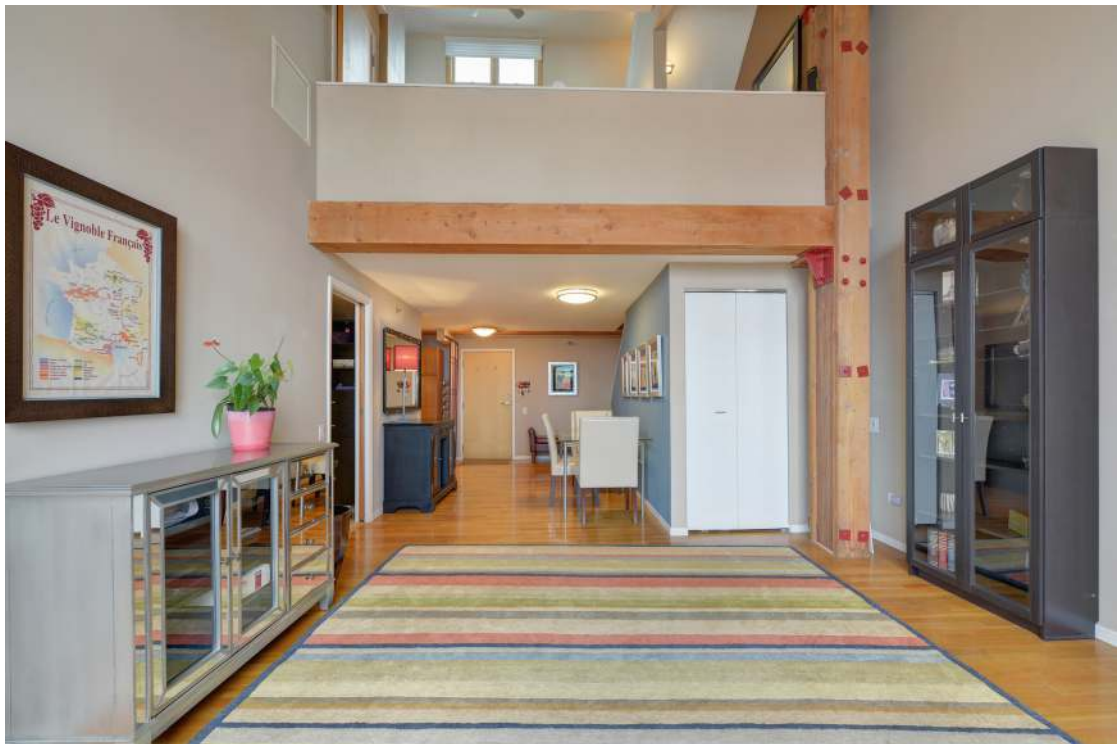
LAUNDRY ROOM : 6' × 4'

DEN : 17' × 12'

DECK : 22' × 23'

ABOUT THIS HOME

STUNNING & STYLISH TRIPLEX PENTHOUSE TIMBER LOFT W/ AN EXTRA LARGE 500+ SQ FT ROOF DECK NOW AVAILABLE AT PRAIRIE DISTRICT LOFTS! COME EXPERIENCE TRUE OPEN CONCEPT LOFT LIVING IN ONE OF THE SOUTH LOOP'S 1ST HISTORIC BUILDINGS. CONVERTED FROM THE KODAK FACTORY & CENTERED IN THE HEART OF PRAIRIE DISTRICT, THIS 1900+ SQ FT HOME FEATURES 3 BEDS + A SIZABLE DEN W/ A HUGE WALK-IN STORAGE ROOM & COMES MOVE-IN READY W/ A FULLY RENOVATED KITCHEN & 2 UPDATED BATHS! 3RD FLOOR MASTER SUITE PROVIDES AMPLE RM FOR A KING SIZE BED & A MASSIVE WALK-IN CLOSET! THIS HOME BOASTS A LONG LIST OF UPGRADES INCLUDING SS APPLIANCES, TANKLESS WATER HEATER, HARDWOOD FLRS, ANDERSON WINDOWS/ DOORS, AUTOMATED BLINDS, HEATED TILE & MUCH MORE! DISCOVER BRIGHT & AIRY W/ 8.5' WINDOWS FLOODING THE SPACE W/ NATURAL LIGHT FROM FLOOR TO CEILING & ALL 17' BETWEEN. AMAZING INDOOR/OUTDOOR LIVING SPACE SHOWCASES GORGEOUS VIEWS OF THE LAKE, NAVY PIER/FIREWORKS & THE CHICAGO SKYLINE. DONT MISS YOUR CHANCE TO OWN THIS AMAZING HOME!











WE WOULD CALL THE **SOUTH LOOP** A BOOMTOWN, BUT THAT WOULD BE AN INCREDIBLE UNDERSTATEMENT.

New homes, factory conversions and trendy lofts. That’s just the half of it. Almost every corner of the South Loop is experiencing new development, from the lofts of Printers Row and the Motor Row Historic District to the high-rises of Central Station and retail corridor along Roosevelt Road. There are also not one but two skyscrapers in the works.

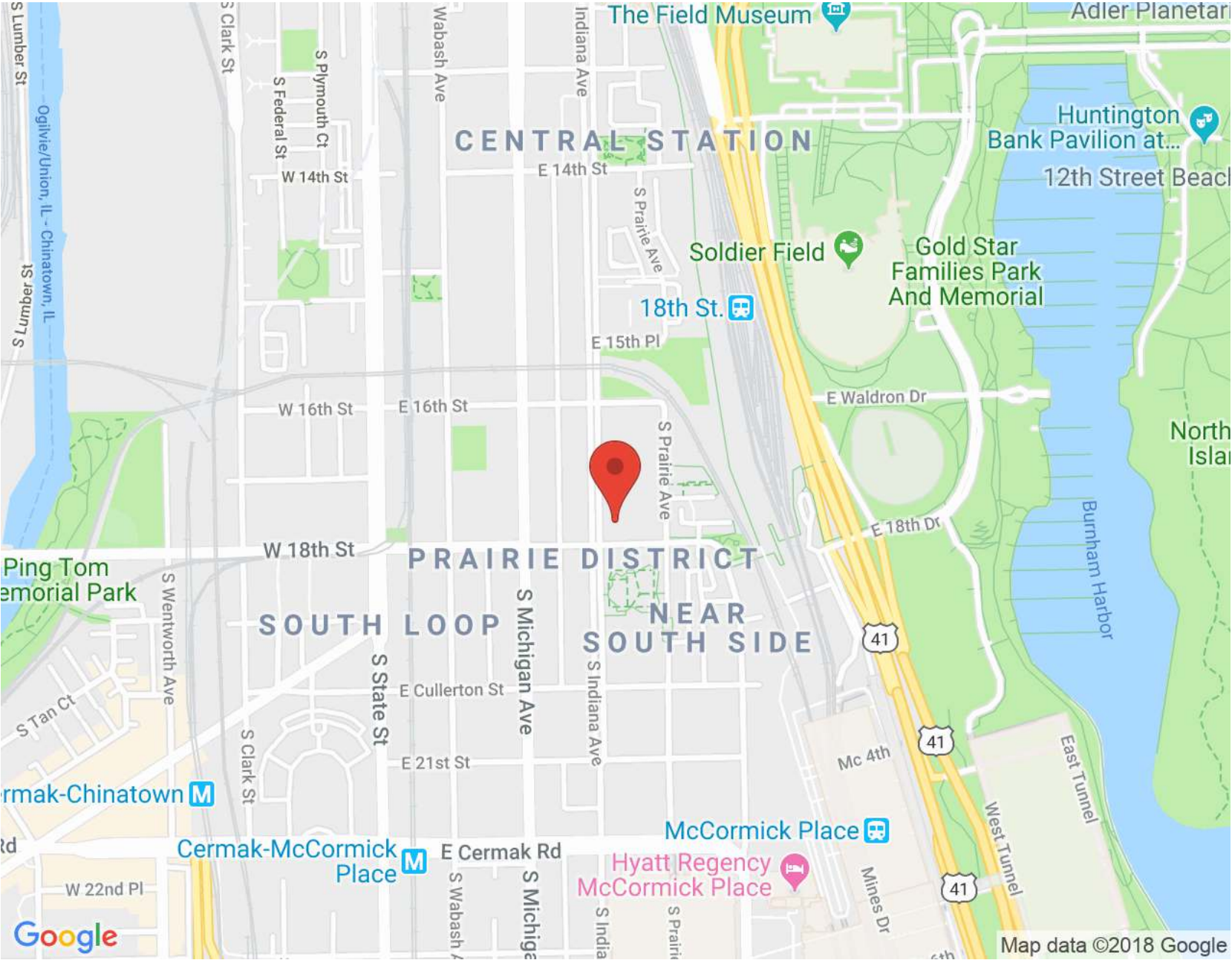
A number of large developments are planned and underway, including a mixed-use mega project on a massive parcel of vacant land so large it is called “78” because it’s expected to raise the city’s number of neighborhoods from 77 to 78.

Long after the neighborhood was home to business icons Marshall Field and George Pullman; after being quiet for much of the 20th century, the introduction of Central Station in the 1990s brought the area’s first wave of homes.

Now it’s a tsunami of construction. Warehouses and factories gutted and refashioned into lofts, condos and apartments. New construction underway includes high-rises featuring classic and contemporary architecture, single-family homes, townhomes and mid-rises. There’s even a new pocket park complete with playground and dog run for neighbors to enjoy.

The area’s housing boom has brought with it an influx of retailers, sophisticated eateries and a trendy nightlife scene.

Residents enjoy the proximity to the Loop via the Roosevelt L stop for the red, green and orange lines. Museum Campus and the lakefront with incredible views of the lake and skyline are a short walk away.



NOTES _____



ROBERT YOSHIMURA

(773) 329-5621

RYOSHIMURA@ATPROPERTIES.COM



1727INDIANA AV 415.INFO