

1733 W. IRVING PARK ROAD #403
LAKEVIEW





ROOM DIMENSIONS

LIVING ROOM : 18' × 17'

DINING ROOM : 17' × 13'

KITCHEN : 15' × 13'

PRIMARY BEDROOM : 18' × 18'

SECOND BEDROOM : 18' × 16'

2 BEDROOM

2 BATH

TAXES: \$8,250

ASSESSMENTS: \$533 / MONTH

PROPERTY INFORMATION & DETAILS

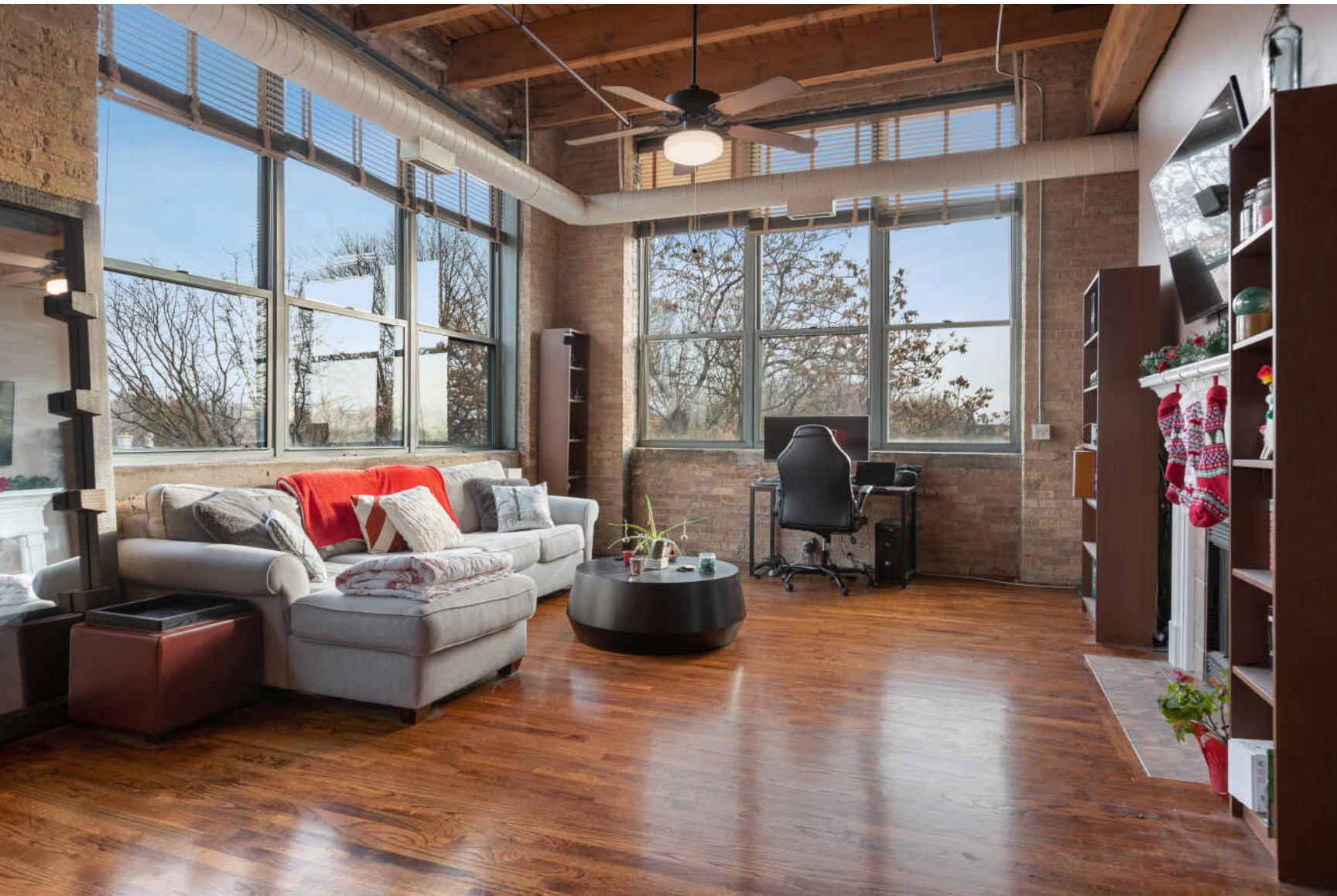
Large, beautiful, sunny, southeast corner two bed/two bath 1781 sq. ft. loft in historic Postcard Place with impressive 14-ft timber ceilings in prime Lakeview East location!

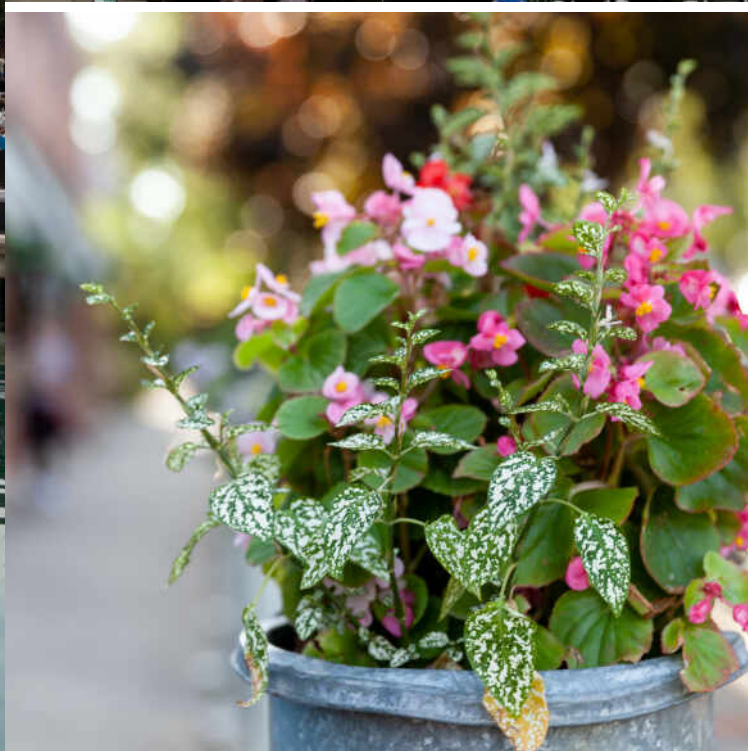
- Open floor plan with two oversized, enclosed bedrooms, large living room with wood burning fireplace, spacious dining room, and two full baths
- This units has south, east, and west views of the city and is extremely quiet
- Exposed brick and large windows in all the rooms giving exceptional light
- Kitchen with granite counter tops, SS appliances, island, and white cabinet
- Primary bedroom features a wall of organized closets and primary bath a dual vanity, soaking tub, and separate walk-in shower
- Hardwood floors throughout, washer/dryer in unit, newer HVAC, and newer water heater
- One garage parking space included in the price
- Common area roof top deck with expansive city views, grills, and outdoor furniture
- Steps to transportation, shopping, nightlife, and all Ravenswood has to offer!



© VHT STUDIOS







CHICAGOANS WILL FIND MORE THAN A FEW OF THEIR FAVORITE THINGS IN **LAKEVIEW**, ONE OF THE LARGEST NEIGHBORHOODS ON THE CITY'S NORTH SIDE.

For starters, there’s Lakeview’s proximity to the beach and public transit, quiet residential streets, thriving restaurant and bar scene, and Wrigley Field.

Then there’s the neighborhood’s historic theaters and notable architecture. The Music Box Theater has been operating since it opened in 1929, originally showing silent films accompanied by a live organ player. It now plays independent and foreign films.

Did we mention the outdoor festivals, farmers markets, nightlife, and cultural attractions? Lakeview is home to the Belmont Theater District with over 30 theaters and live performance venues near the Belmont “L” station. Residents also have a front-row seat to the Chicago Marathon, Chicago Pride Parade, and Bike the Drive.

And we can’t forget shopping - shops on the Southport Corridor, independent businesses on Lincoln Avenue, and unique boutiques sprinkled throughout the neighborhood.

Lakeview includes a variety of housing styles and prices. Homes run the gamut from vintage walk-ups, condominiums, new construction three-flats, loft buildings, converted courtyard buildings, and high-rises. There are also a variety of single-family homes from stately mansions near Lincoln Park to contemporary new construction throughout the neighborhood.



VHT STUDIOS



NOTES



RITA KERINS

(773) 807-2387

RITA@RITAESTATE.COM

WWW.RITAESTATE.COM



All specifications, features, designs, price, assessments, taxes and materials are subject to change without notice. Depicted floor plans and architectural renderings are only an artist's impression.

