

17527 W STILLWATER COURT
GURNEE





ROOM DIMENSIONS

LIVING ROOM : 23' × 16'

DINING ROOM : 12' × 11'

KITCHEN : 11' × 10'

PRIMARY BEDROOM : 19' × 14'

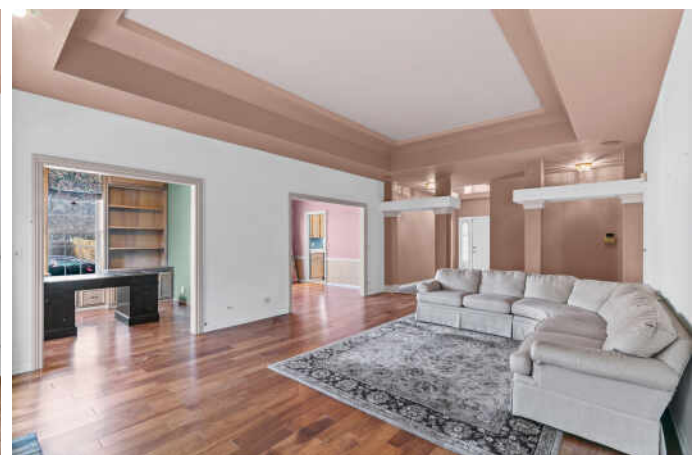
SECOND BEDROOM : 13' × 12'

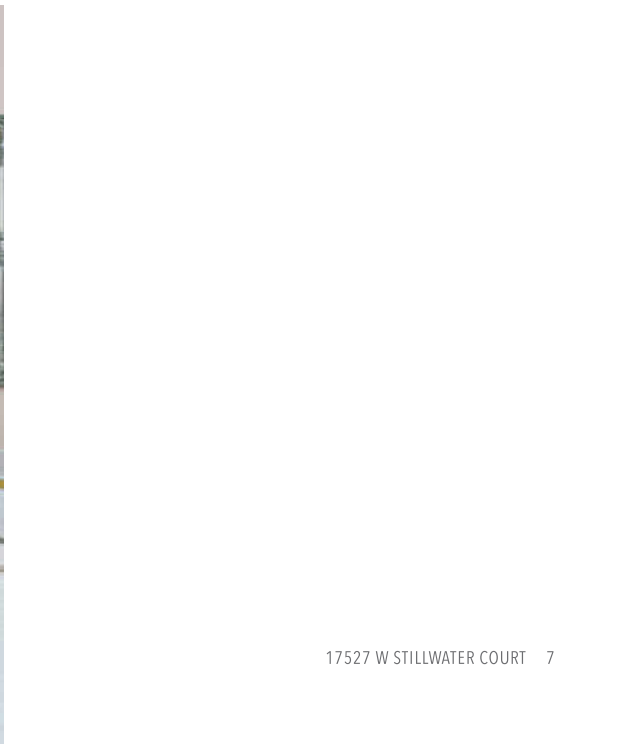
2 BEDROOM

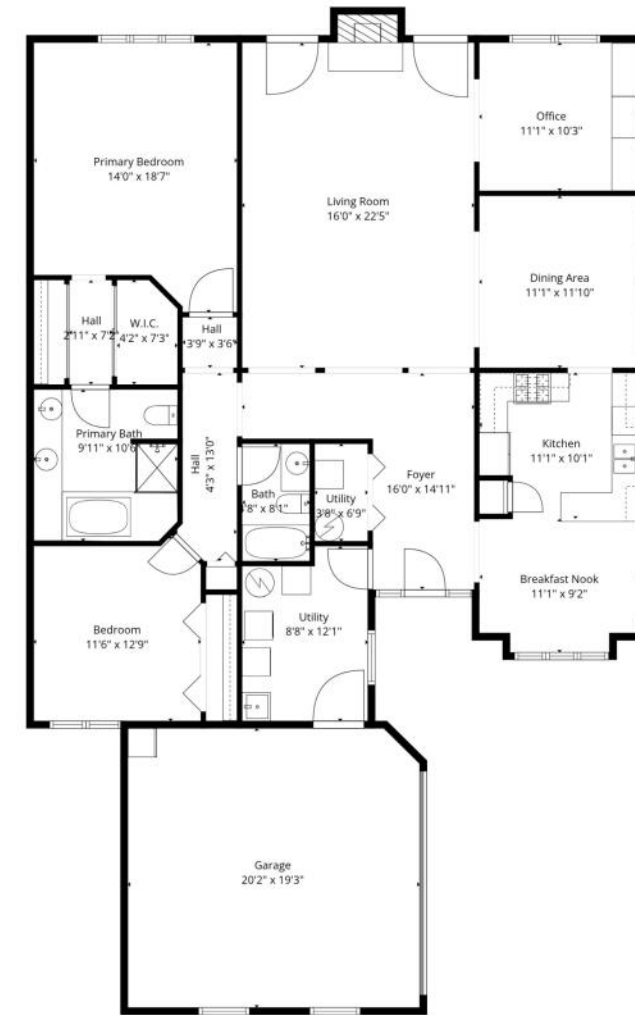
2 BATH

LOVE WHERE YOU LIVE IN GURNEE

Welcome to this lovely ranch single-family brick home perfectly located on a cul-de-sac in the desirable Brookside subdivision in Gurnee. As you walk in through the front foyer, you'll enjoy the feel of the cathedral ceilings. This sun-drenched home offers 2 bedrooms, 2 baths, plus a den and is just waiting for your perfect decorating touches! The spacious primary bedroom features a fantastic ensuite that has a jet tub, separate shower, dual sinks, skylights and 2 separate walk-in closets. The oversized family room has tray ceilings, a fireplace and a separate office. Enjoy dual access to the backyard patio from either side of the fireplace. This darling kitchen has a perfect sized eat in kitchen with access to the side patio. Experience the convenience of a two-car heated garage. The layout is sure to impress you! Enjoy all the amenities Brookside has to offer which includes the Clubhouse, workout/exercise room, pool, spa, tennis courts and a park. Easy access to shopping, restaurants and I-294!







Floor Plan Created By Cubicasa App. Measurements Deemed Highly Reliable But Not Guaranteed.



GINA SHAD

(847) 970-8513

847-367-0500

GINASHAD@ATPROPERTIES.COM

WWW.GINASHADREALSTATE.COM