

1762 SOMERFIELD LANE
CRYSTAL LAKE





3 BEDROOM
2.1 BATH
TAXES: 7,884

A RARE OPPORTUNITY IN CRYSTAL LAKE!

Welcome to this beautifully maintained original-owner home situated on a spacious corner lot in one of Crystal Lake's most desirable neighborhoods, The Villages. Featuring 3 bedrooms and 2.5 bathrooms, this property offers the perfect blend of character, comfort, and convenience.

Step inside to find vaulted ceilings, stunning 3/4-inch hardwood oak floors and updated baseboards, and neutral paint throughout creating a warm and timeless feel. The home has been lovingly cared for and thoughtfully updated with a newer roof, siding, windows, and updated appliances, ensuring peace of mind for years to come.

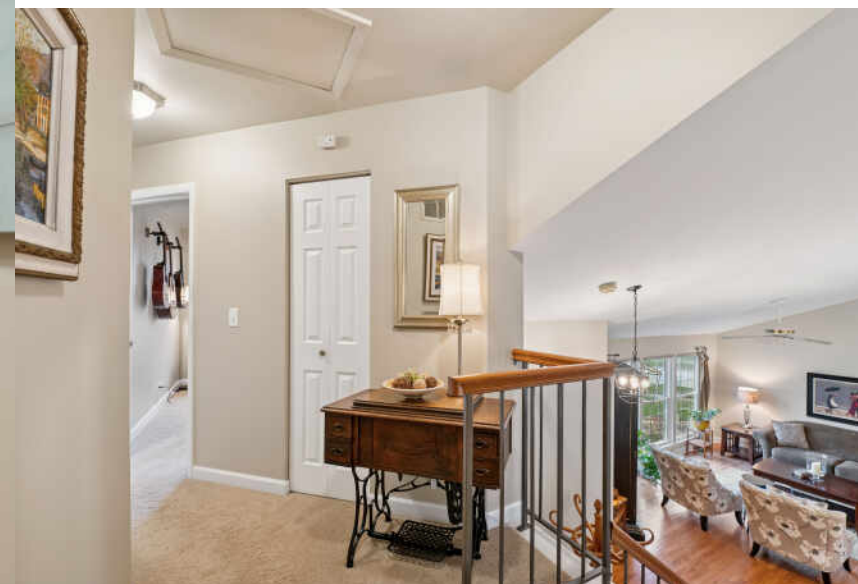
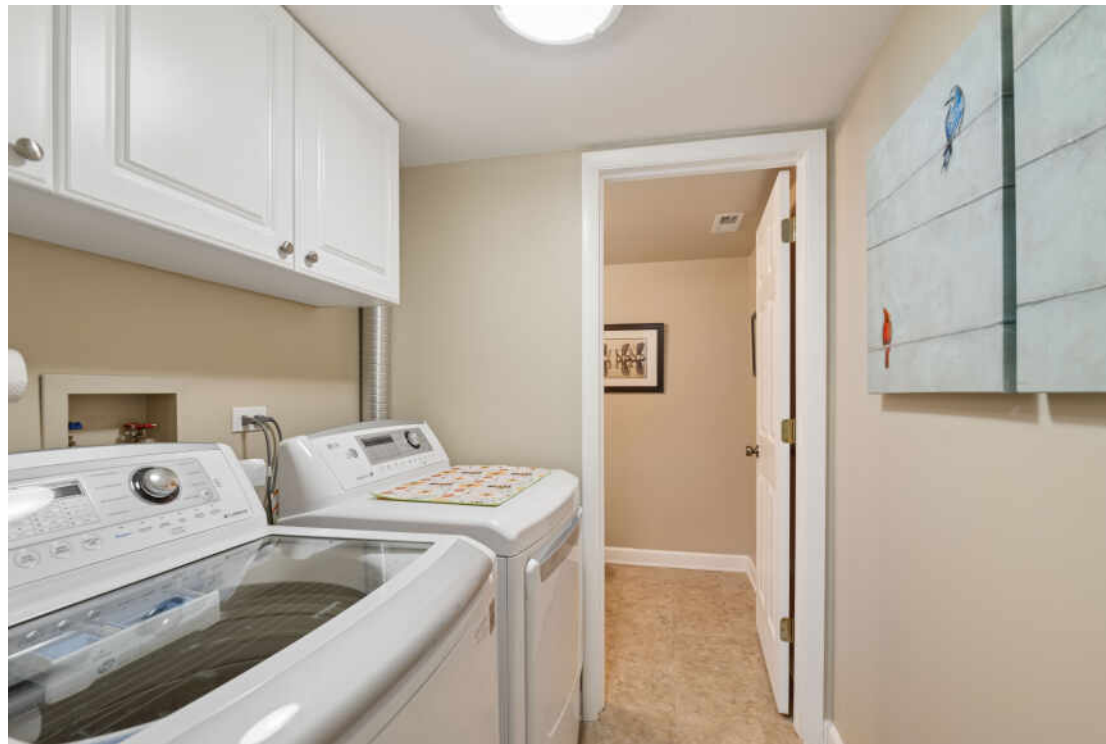
Outside, you'll be captivated by the meticulous, mature landscaping, filled with privacy trees and blooming flowers—a true gardener's paradise and a showstopper in every season.

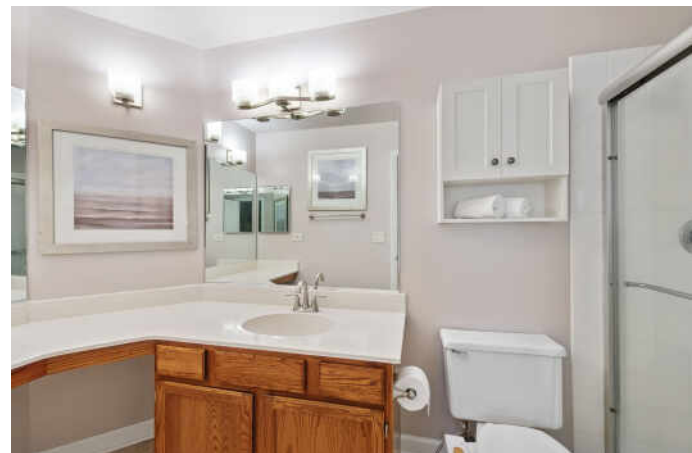
Located within highly rated school districts and offering easy access to the Randall Road corridor, this home puts shopping, dining, and entertainment just minutes away.

Don't miss your chance to own this rare gem—a home with heart, history, and incredible curb appeal!











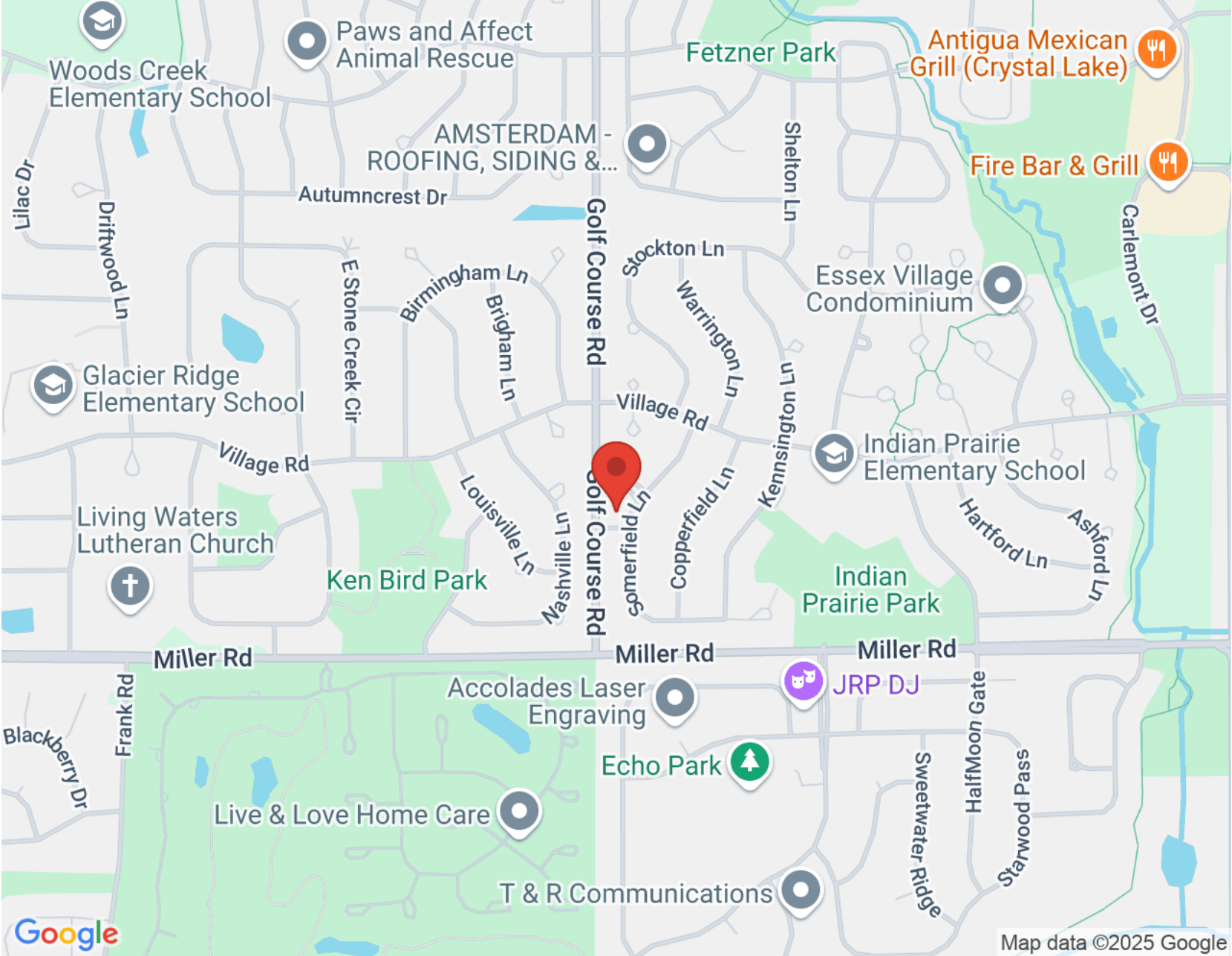
NAMED AFTER THE CRYSTAL-CLEAR WATERS OF ITS NAMESAKE LAKE, **CRYSTAL LAKE** IS A THRIVING COMMUNITY IN MCHENRY COUNTY.

Recreation abounds with the Crystal Lake Park District maintaining numerous parks, including Veterans Acres and Lippold Park, where residents enjoy dozens of athletic fields, biking trails, a disc golf course, and a golf center. One of the area's most popular attractions is the Three Oaks Recreation Area, which offers a swimming beach, fishing, boat rentals, scuba diving, and more.

Crystal Lake is also home to several businesses and the acclaimed Raue Center For The Arts. The community's historic downtown district boasts an assortment of restaurants and local shops.

Several suburban subdivisions can be found throughout Crystal Lake, offering large single-family homes on sprawling lots. Many homes are built around the lake, varying in size and age.

The Crystal Lake Metra station provides convenient transportation to Chicago on Metra's Union Pacific Northwest Line.



NOTES _____



SUZANNE PESCE

8478946739

8479576500

SUZANNEPESCE@ATPROPERTIES.COM



All specifications, features, designs, price, assessments, taxes and materials are subject to change without notice. Depicted floor plans and architectural renderings are only an artist's impression.

