

1785 TELEGRAPH ROAD
LAKE FOREST





ROOM DIMENSIONS

LIVING ROOM : 23' × 15'
FAMILY ROOM : 19' × 19'
DINING ROOM : 10' × 16'
KITCHEN : 9' × 20'
PRIMARY BEDROOM : 20' × 18'
SECOND BEDROOM : 12' × 17'
THIRD BEDROOM : 11' × 15'
FOURTH BEDROOM : 11' × 15'

4 BEDROOM
3 BATH
TAXES: 10579

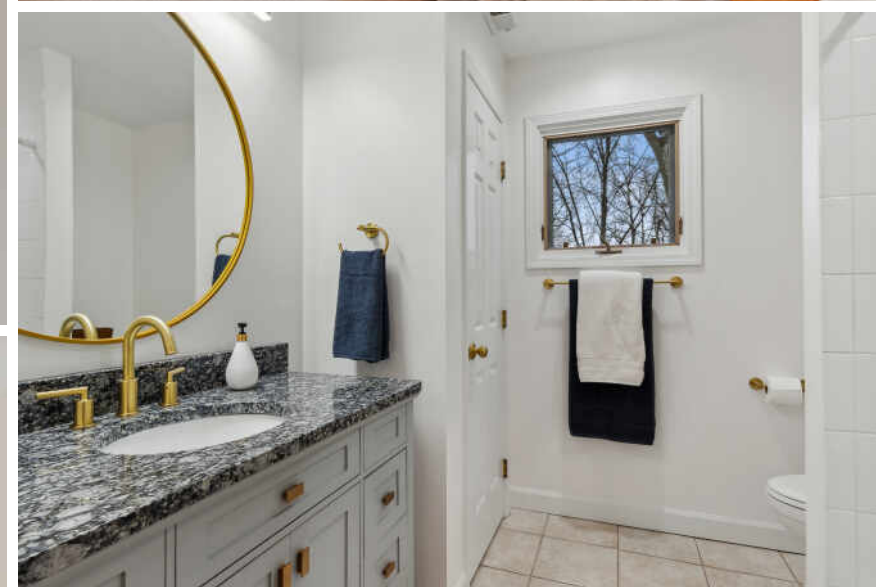
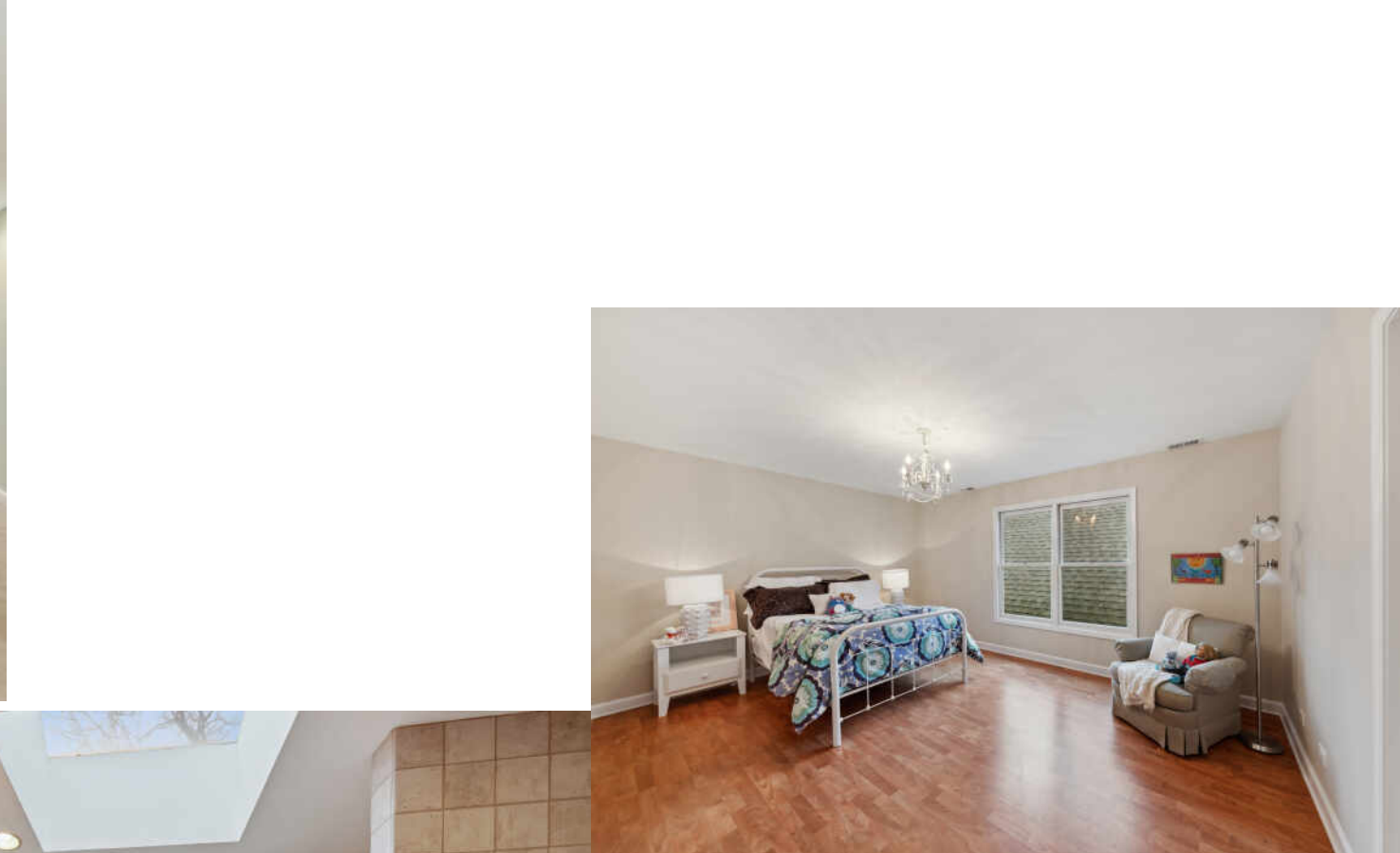
Location, Location, Location! You can live approximately 1/2 mile from Everett elementary school, with a sidewalk to walk there, within a 1 1/2 miles to a grocery store and Metra train stop, with easy access to 94 or 41 and own 1.5 acres of land in Lake Forest! This is a 3,355 sq ft transitional style home featuring modern and traditional styling. There are 4 bedrooms and 2 full bathrooms upstairs; half bath on first floor and in basement. First floor has an open flow between the kitchen, eating area, family room and living room. An expansion of an original ranch home was completed in 1996 with family room and additional basement added on in 2003.

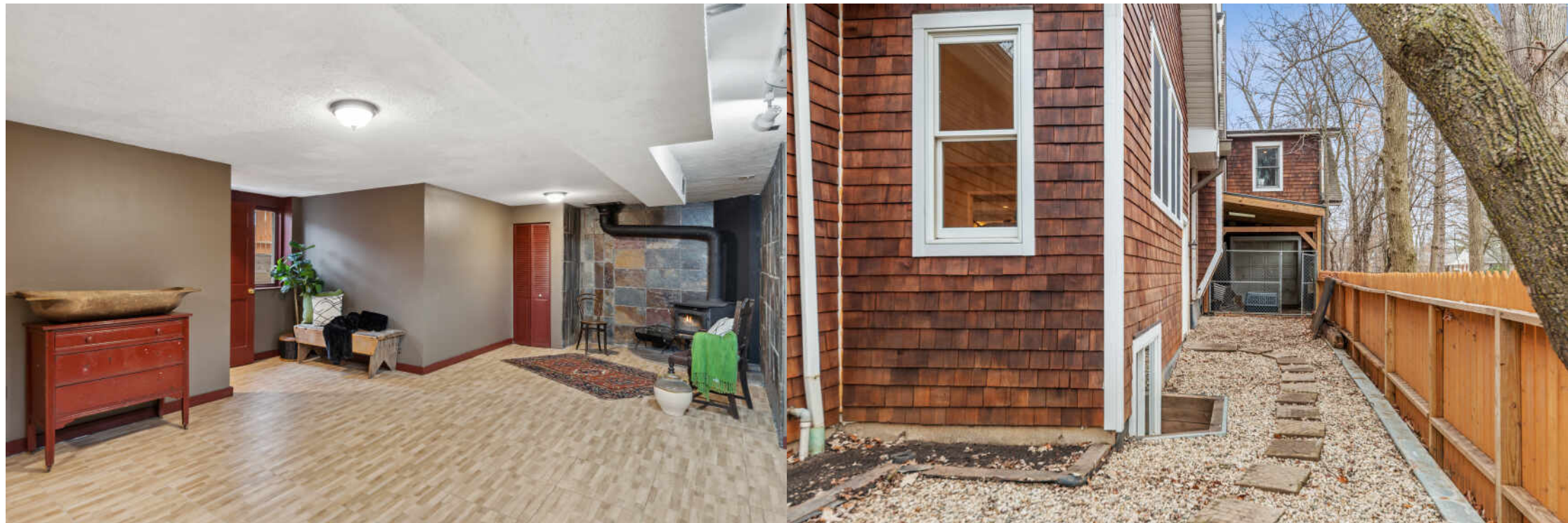
Home features cedar siding, copper gutters, copper window flashing, 9' ceilings on 1st floor, 8' ceilings on 2nd, 2 furnaces, 2 AC units, 2-50 gal water heaters and a boiler. The boiler provides radiate heat to the primary suite, family room, and garage. The construction of the home, combined with the boiler, helps to make this a home that is energy efficient. Two basements provide unlimited options: children's playroom, office, man cave, workout area, art studio, etc. The main basement has two storage rooms and one large room. Garage has 14' ceilings (making a car lift possible) with a third, open air stall behind one of the front garage doors; great place to store a boat or trailers out of the elements and hidden from neighbors. Side door off family room leads to a dog run.

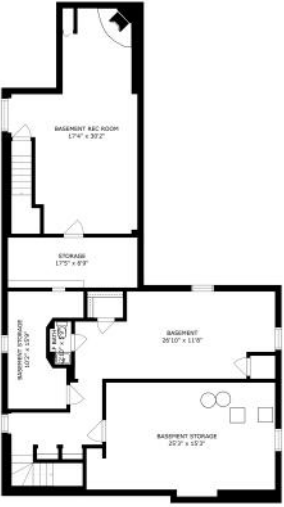
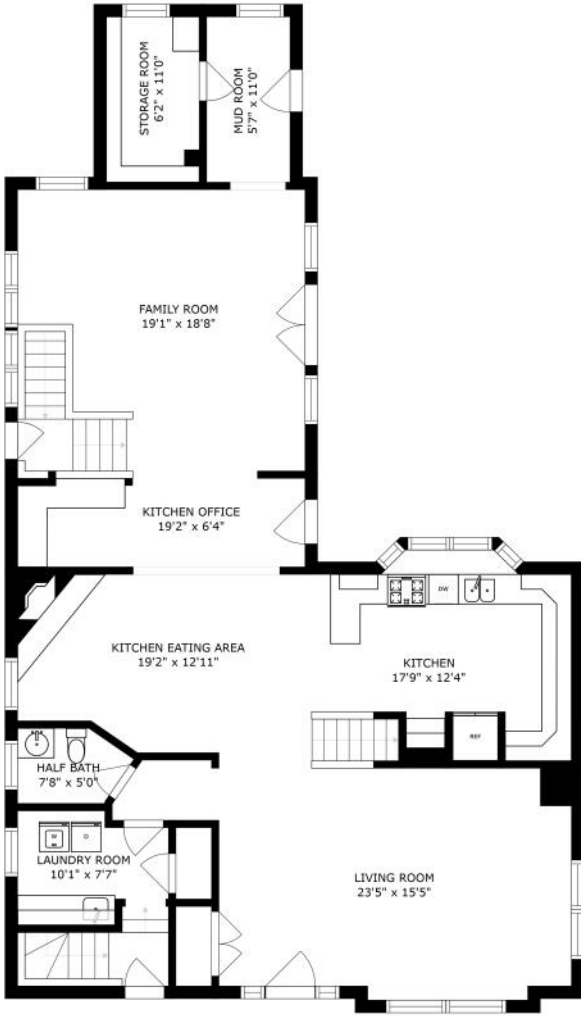
The lot is extra deep providing a walking path for strolling to a private dock and woodland pond. Due to the depth of the lot, there are no homes obstructing your view of nature from a huge bay window in the kitchen. This is a great home to get the benefits of living in Lake Forest and the gift of enjoying the outdoors out your own back door.

- First floor open floor plan
- Large lot in location close to elementary school, grocery store, train station and interstate
- 9' ceilings on first floor
- Hardwood floors throughout first floor
- Tons of storage options











WITH ITS TOWERING TREES, PICTURESQUE STREET PLAN, AND BLUFFS OVERLOOKING LAKE MICHIGAN, IT'S EASY TO SEE WHY **LAKE FOREST** IS KNOWN FOR ITS NATURAL BEAUTY.

Rich in history, the community offers true luxury in a resort-style setting. Historic estates built by legendary architects Howard Van Doren Shaw, David Adler, and Henry Ives Cobb are interspersed among elegant homes with impeccable landscaping. Properties range from multi-million-dollar mansions to maintenance-free new construction condominiums and single-family homes with a convenient in-town location.

The community boasts schools including Lake Forest Academy, Lake Forest College, and Lake Forest Graduate School of Management.

At the heart of Lake Forest is Market Square, a historically significant landmark and charming hub of boutique shopping and dining. Cultural and recreational opportunities abound including the Gorton Community Center and Lake Forest Recreation Center, as well as at beautiful beaches, golf courses, and biking trails. There is also a Metra station right in town, providing commuters with convenient access to downtown Chicago.



KHRIS CONDON

847.302.9308

847-295-0700

KHRISCONDON@ATPROPERTIES.COM



CHRISTIE'S
INTERNATIONAL REAL ESTATE

1785TELEGRAPH.INFO

All specifications, features, designs, price, assessments, taxes and materials are subject to change without notice. Depicted floor plans and architectural renderings are only an artist's impression.

