



180 E PEARSON STREET #3401
STREETERVILLE

180 E PEARSON STREET #3401 · STREETERVILLE



SUE FICHTER BROKER

630.222.3844 mobile
773.472.0200 office
suefichter@atproperties.com

@properties | CHRISTIE'S
INTERNATIONAL REAL ESTATE

LP LUXURY
PORTFOLIO
INTERNATIONAL

180 E PEARSON STREET #3401 · STREETERVILLE





180 E PEARSON STREET #3401

ROOM DIMENSIONS

Living Room	28'x18'
Dining Room	17'x13'
Kitchen	18'x16'
Primary Bedroom	16'x20'
Second Bedroom	13'x18'
Third Bedroom	13'x12'
Foyer	16'x9'

FEATURES

Experience elevated city living in this stunning luxury high-rise residence in the heart of downtown Chicago, offering sweeping lake and skyline views. This expansive three bedroom home - currently configured as an oversized two bedroom-delivers an extraordinary blend of space, light, and modern elegance. This home features a huge open-concept living room with ample space for multiple seating areas, complemented by a formal dining room perfect for hosting memorable dinner parties. The flexible third bedroom has been thoughtfully opened to create an expansive secondary living area or office, easily convertible back to a private bedroom if desired. The gourmet chef's kitchen boasts high-end appliances, sleek cabinetry, stone countertops, and a generous island for gathering. The primary suite is a private retreat with stunning views, a spa-inspired bath, and generous closet space. The spacious second bedroom offers comfort and privacy for guests or family. Residents can enjoy the white-glove amenities offered by the Ritz Carlton including concierge services, spa, indoor pool, fitness center and fine dining for an additional fee. On-site parking and valet options are available for residents and guests.



SUE FICHTER BROKER

630.222.3844 mobile
773.472.0200 office

suefichter@atproperties.com













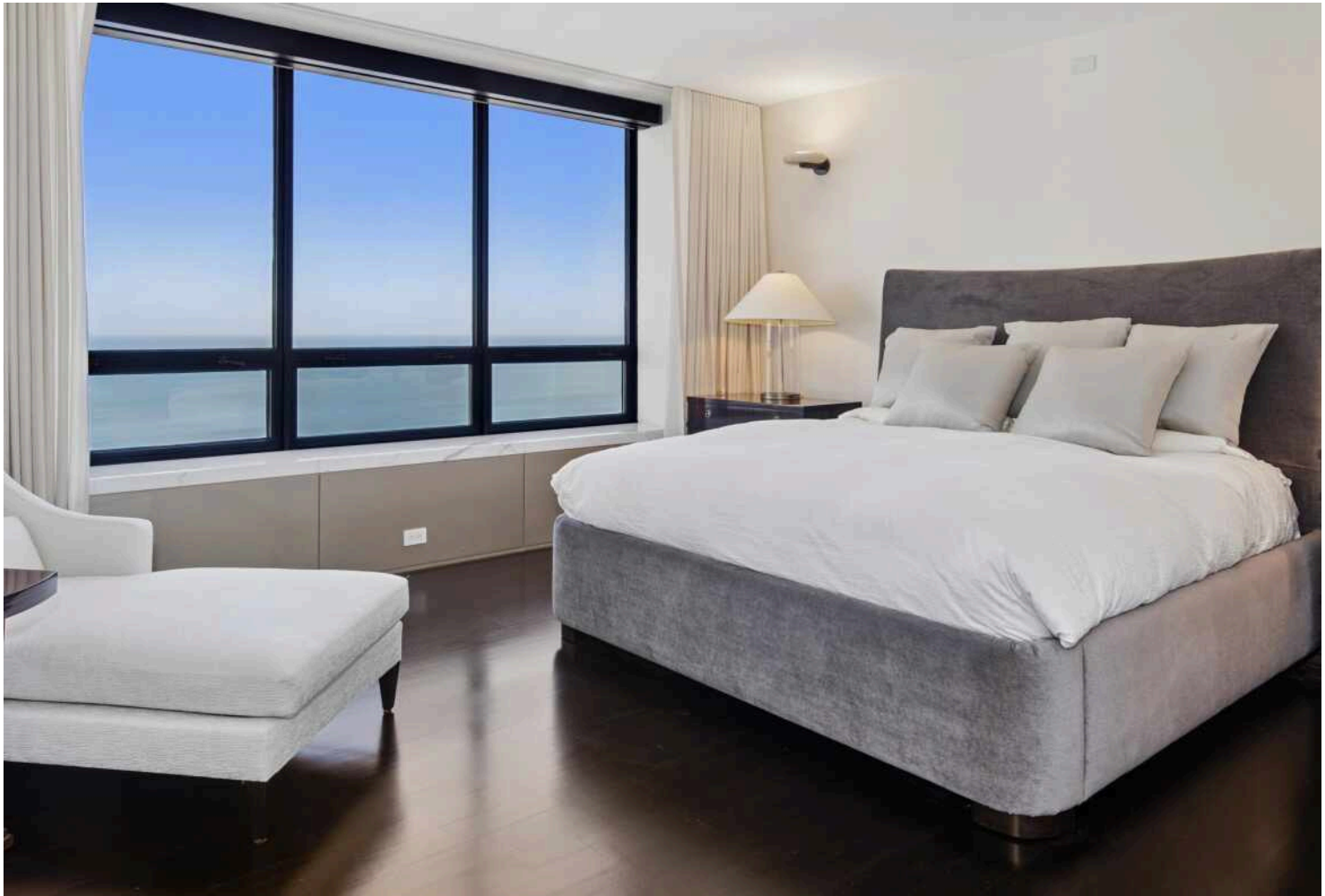




















Total: 2410 sq. ft
 1st Floor: 2410 sq. ft
 Excluded Areas: Walls: 106 sq. ft

LLECTIVE

Measurements Are Highly Reliable But For Marketing Only. Produced By The Collective.



MAJOR DEVELOPMENT IN RECENT YEARS PUT **STREETERVILLE** ON THE MAP.

Locals love the neighborhood's proximity to the beach, lakefront paths, and world-class shopping, dining, and entertainment. Streeterville is also home to some of the city's renowned architecture.

In the past two decades alone, dozens of new buildings, high-rises, hotels, stores, and institutions have sprung up, bringing with them a flock of residents to the high-energy community.

A wide range of housing is available, the majority in high-rise buildings. The neighborhood's stunning array of architecture includes pre-war buildings, a collection of Mies van der Rohe buildings, and iconic buildings like 875 North Michigan Avenue (known as the John Hancock Center). New construction and smaller mid-rise buildings can be found throughout the neighborhood as well.

Streeterville is home to notable attractions such as The Magnificent Mile, Water Tower Place, and the Museum of Contemporary Art. It is also home to Northwestern Memorial Hospital's state-of-the-art medical campus and the downtown campuses of Northwestern University and the University of Chicago.

While the neighborhood offers a number of smaller "pocket" parks and playgrounds, the lakefront is the center of attention, and it's never more than a couple of blocks away. While dining out is easy, deciding where go with so many great restaurant options is not.

Residents have easy access to surrounding areas via the CTA's Red Line and numerous buses that run up and down Michigan Avenue.





@properties® | CHRISTIE'S
INTERNATIONAL REAL ESTATE

Leading REAL ESTATE
COMPANIES
OF THE WORLD®

LP
LUXURY
PORTFOLIO
INTERNATIONAL

