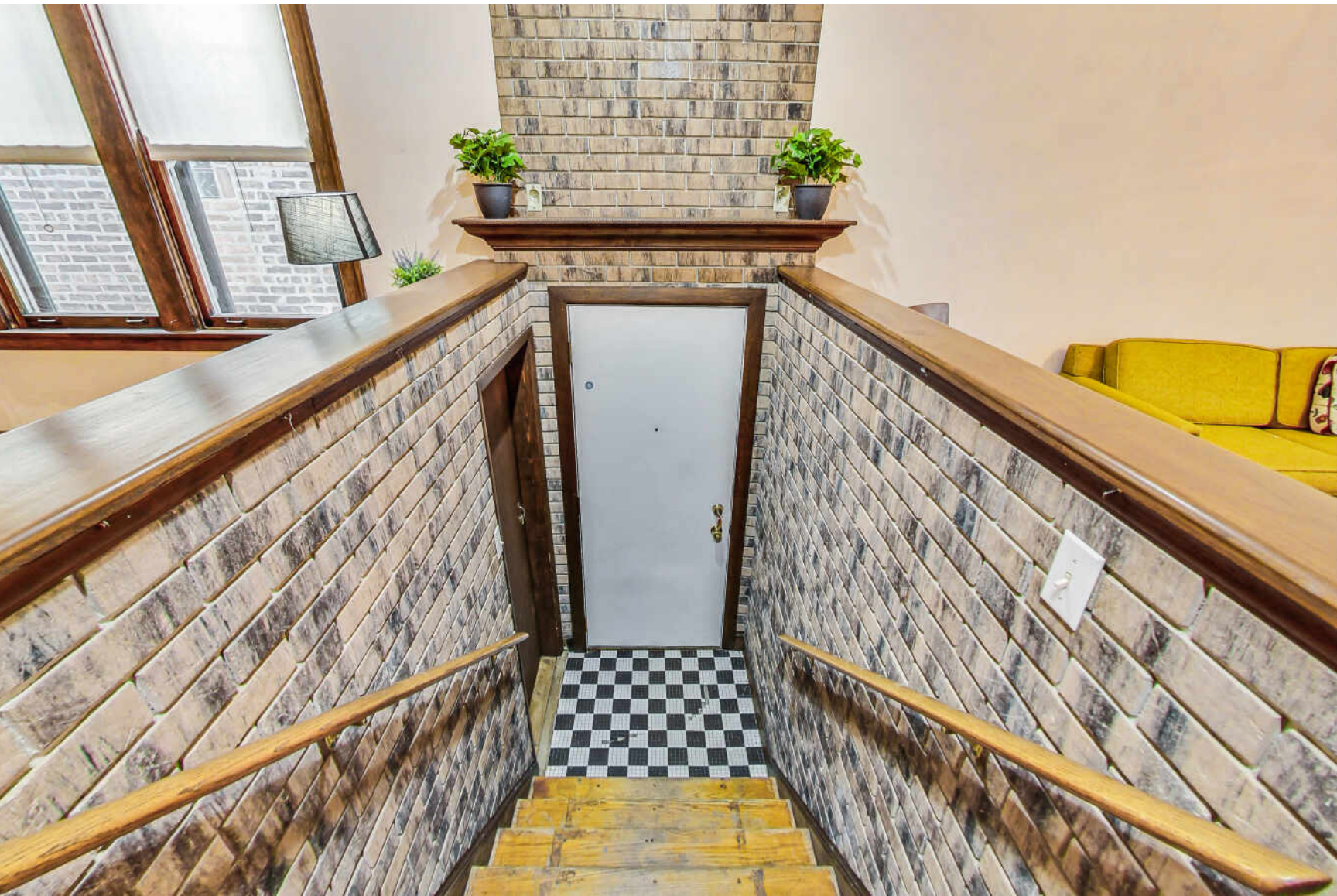


1818 W 34TH STREET
MCKINLEY PARK





ROOM DIMENSIONS

LIVING ROOM : 12' × 16'

DINING ROOM : 12' × 14'

KITCHEN : 8' × 7'

PRIMARY BEDROOM : 9' × 11'

SECOND BEDROOM : 9' × 12'

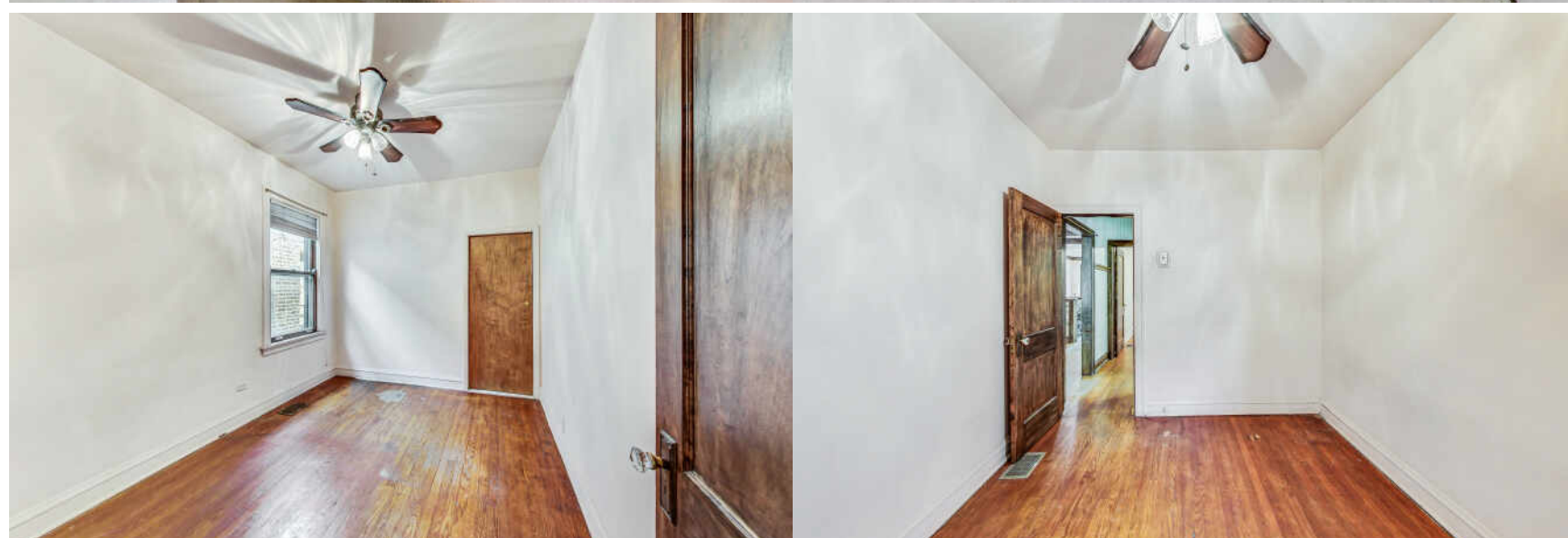
THIRD BEDROOM : 9' × 10'

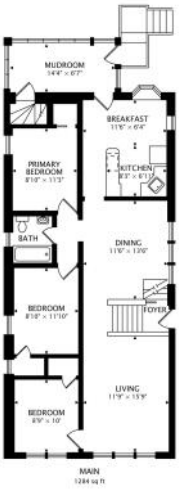
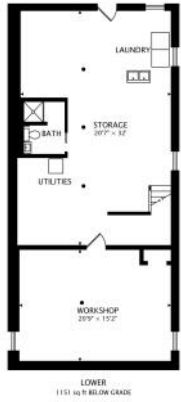
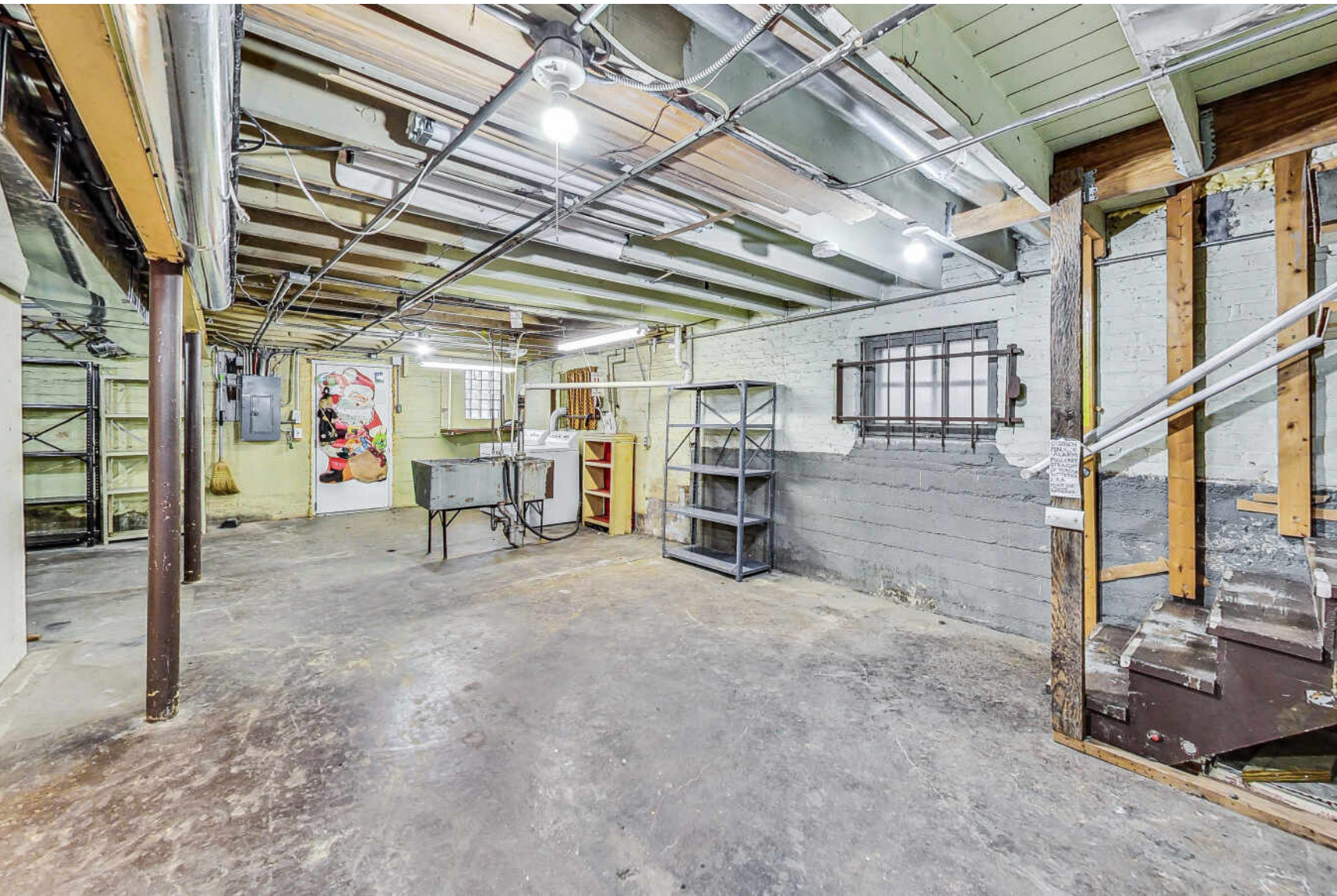
3 BEDROOM

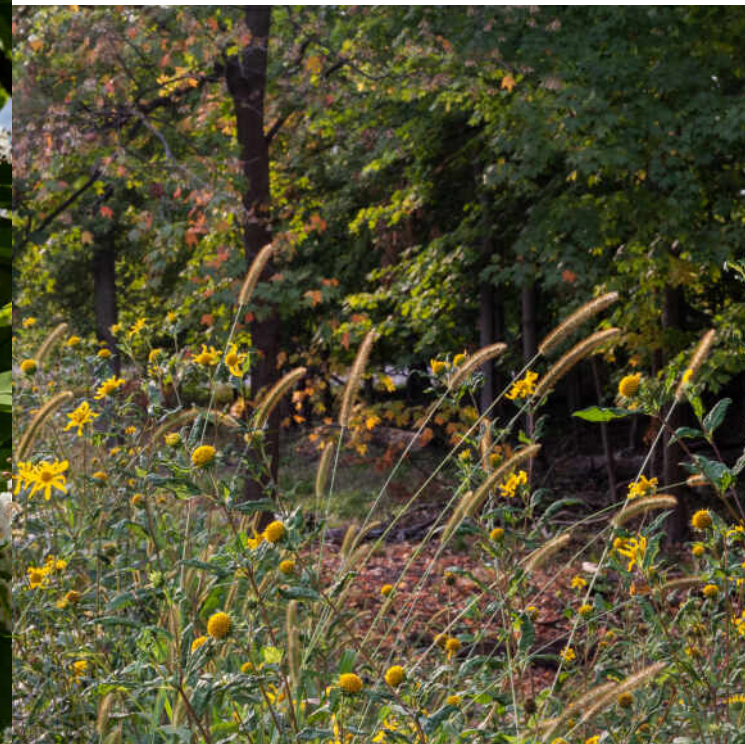
2 BATH

TAXES: \$932

Spacious traditional brick bungalow with vintage architectural accents. 3 bedrooms and 2 full bathrooms! Single family home with hardwood floors throughout the main level. You will love the attached three season room during spring, summer, and fall. The large unfinished basement has 7-foot ceilings, a full bathroom and is ready for your final touches. HVAC system 5 years new. Roof and gutters are 2 years new. Beautiful yard with paver brick patio and concrete patio that leads to garage party door. Very well-maintained home with a large 22 x 22 custom garage! Located between Archer Ave. and Wood St. in the McKinley Park neighborhood, the geographical center of Chicago. Easy access to public transportation, I-55, I 94, and I 90. Close to Chinatown, Bridgeport, minutes to West Loop and Downtown Chicago. Walk to see the Chicago White Sox at Guaranteed Rate Field. You must see this one. It won't last long. Home is in excellent condition and will be conveyed As Is.







HISTORY AND ARCHITECTURAL HERITAGE HELP DEFINE THE SOUTHWEST SIDE NEIGHBORHOOD OF **MCKINLEY PARK**.

Dating back to the 1830s, McKinley Park was once forged by industry with dozens of industrial businesses moving here after the Great Chicago Fire of 1871. Today's Chicagoans are discovering a unique culture that makes up McKinley Park and enjoying its proximity to trendy Pilsen and long-established Bridgeport. The neighborhood is also conveniently connected to downtown via nearby CTA trains and interstates.

Although close to The Loop, McKinley Park also offers residents tree-lined streets and a wide variety of cuisine from restaurants along Archer Avenue, 35th Street, and on Ashland. There are also ample shopping options.

The 69-acre McKinley Park provides residents a nature alternative to bustling city activities. The park includes recreational facilities including a fieldhouse, playground, outdoor swimming pool, tennis courts, and an ice-skating rink in the winter. McKinley Park is the site of several festivals and special events such as a Halloween party and summertime Movies in the Park.

Many of the homes in McKinley Park are two-flats and single-family homes. The neighborhood was developed in the '50s and '60s, so the homes boast vintage architecture. Newly renovated lofts can be found along Pershing Road and new construction is interspersed throughout the neighborhood.



NOTES

[illegible]



JIM HANKES | SRES | RENE | PSA

TOP PERFORMER IN MCKINLEY PARK 2022

(312) 752-8329

JIMHANKES@ATPROPERTIES.COM

ATPROPERTIES.COM/AGENTS/JIMHANKES