



1839 SHELLEY COURT  
HIGHLAND PARK



1839 SHELLEY COURT · HIGHLAND PARK

@properties | CHRISTIE'S  
INTERNATIONAL REAL ESTATE

LP LUXURY  
PORTFOLIO  
INTERNATIONAL



JEN CORCORAN BROKER

1 847.287.8053 mobile  
847.832.0002 office  
jencorcoran@atproperties.com



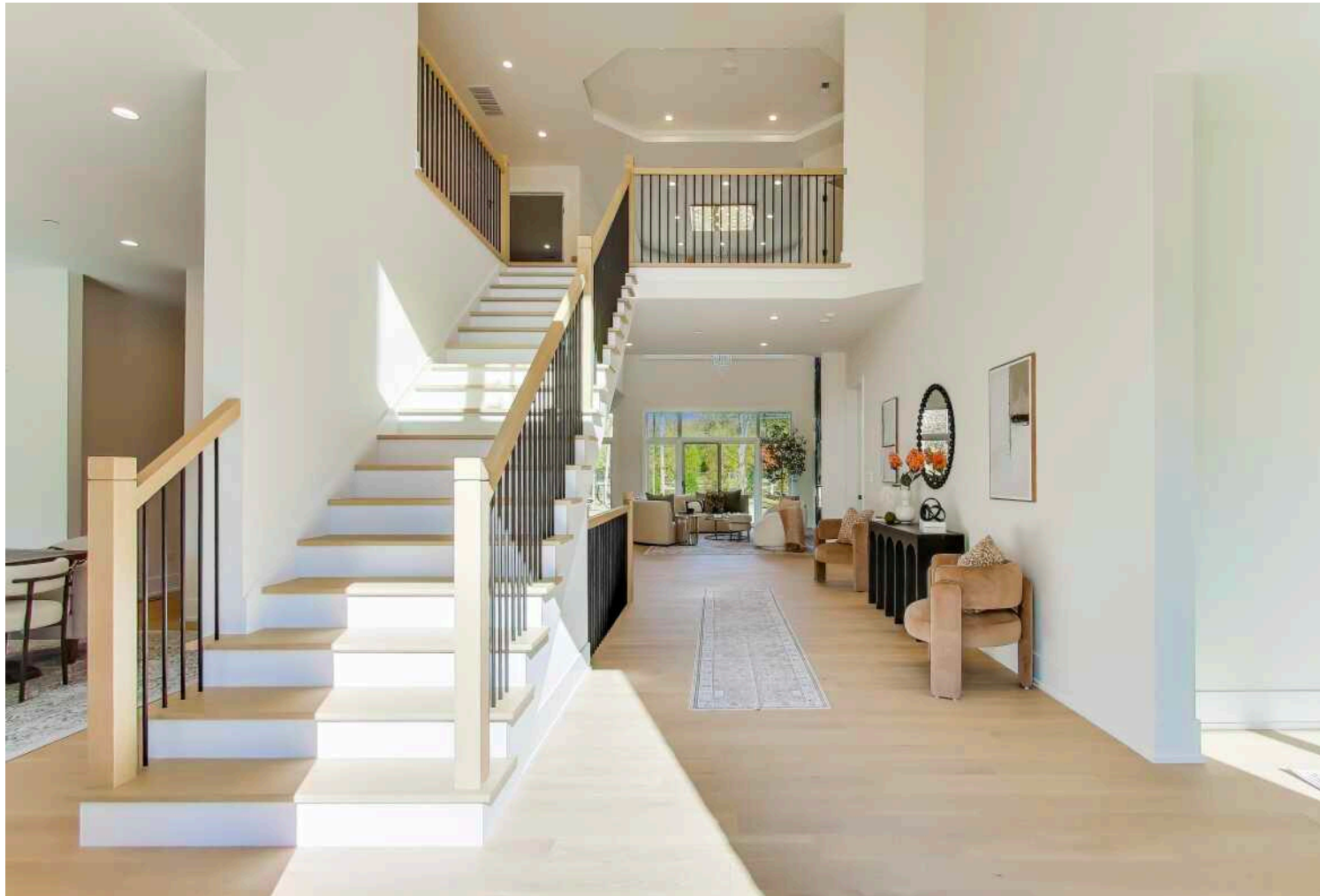
BRANDY ISAAC FOUNDER/TEAM LEAD

312.961.1178 mobile  
brandyisaac@atproperties.com



1839 SHELLEY COURT • HIGHLAND PARK





FOYER

## 1839 SHELLEY COURT

### FEATURES

Welcome to 1839 Shelley Court - an ultra-luxury, new-construction North Shore home situated on nearly an acre lot & tucked back on a private cul-de-sac. This remarkable residence offers 6,600 sf of luxury living space across three levels. The main level features soaring ceilings, gorgeous wide-plank wood flooring, a wide-open layout, & designer lighting fixtures throughout. Off the grand foyer, you have a formal living room & private home office, the formal dining & attached convenient butler pantry. The heart of the home is the gourmet kitchen with high-end Thermador appliances, quartz countertops, a spacious island with seating, additional breakfast area, loads of cabinetry, & large walk-in pantry. The family room has soaring ceiling, fireplace, & wall of windows. A convenient first-floor ensuite bedroom offers a first-floor primary option. A smart mudroom with laundry, and powder room complete the main level. The second level includes four ensuite bedrooms. The spacious primary suite offers a fireplace, two walk-in closets, & a luxurious bath with extra-large shower, a separate soaking tub, two individual vanities, & a private water closet. The lower level has an expansive rec/entertainment area that offers a large wet bar, full-size refrigerator, & dishwasher. A sixth bedroom with an attached full bath, fitness room, large laundry room, & ample storage space complete the lower level. Outstanding exterior features include stone/Hardie board siding, Pella windows, a convenient circular driveway, & large composite deck overlooking the spacious professionally landscaped backyard. Welcome home!



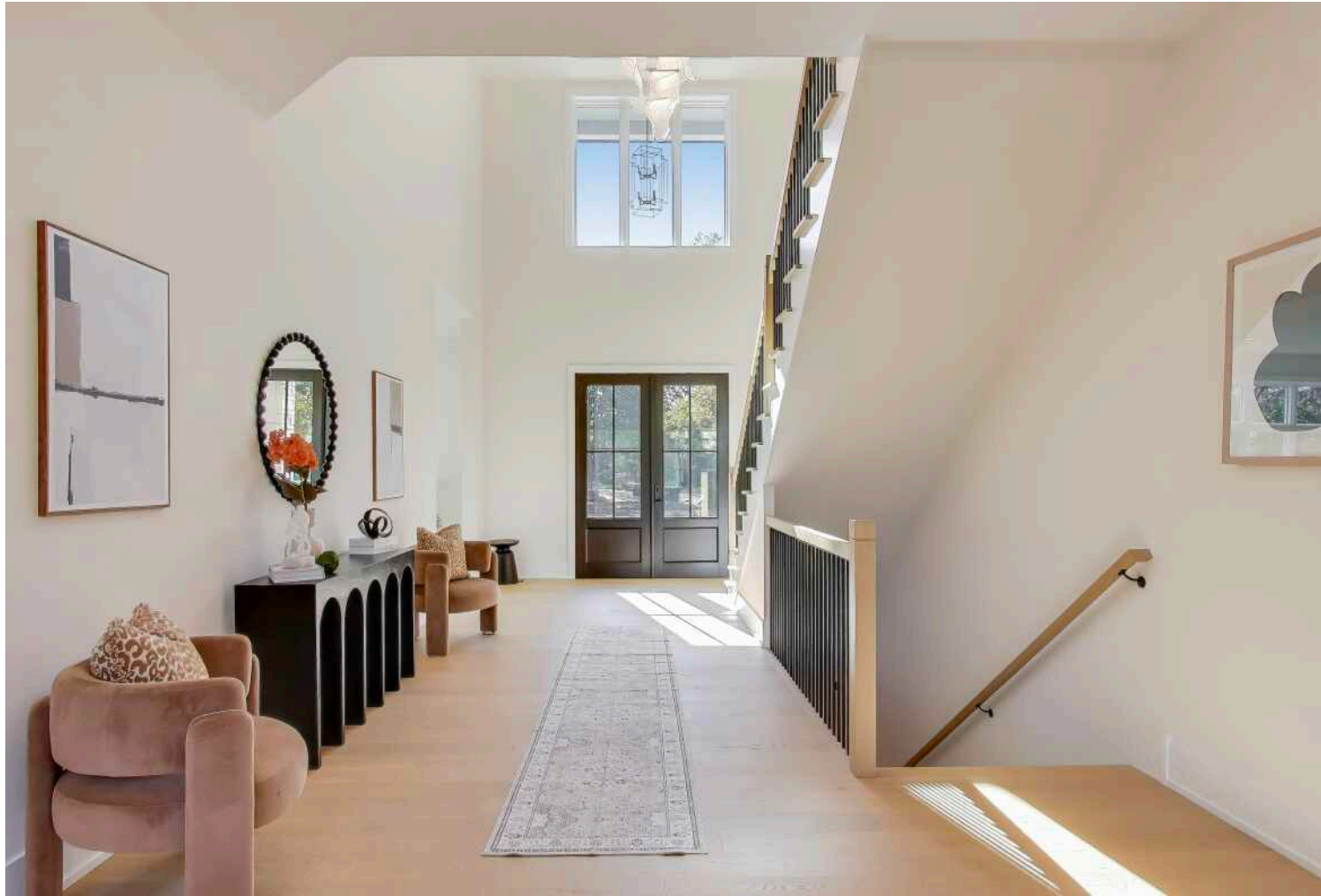
**JEN CORCORAN** BROKER

1 8472878053 mobile  
847.832.0002 office  
jencorcoran@atproperties.com



**BRANDY ISAAC** FOUNDER/TEAM LEAD

312.961.1178 mobile  
brandyisaac@atproperties.com







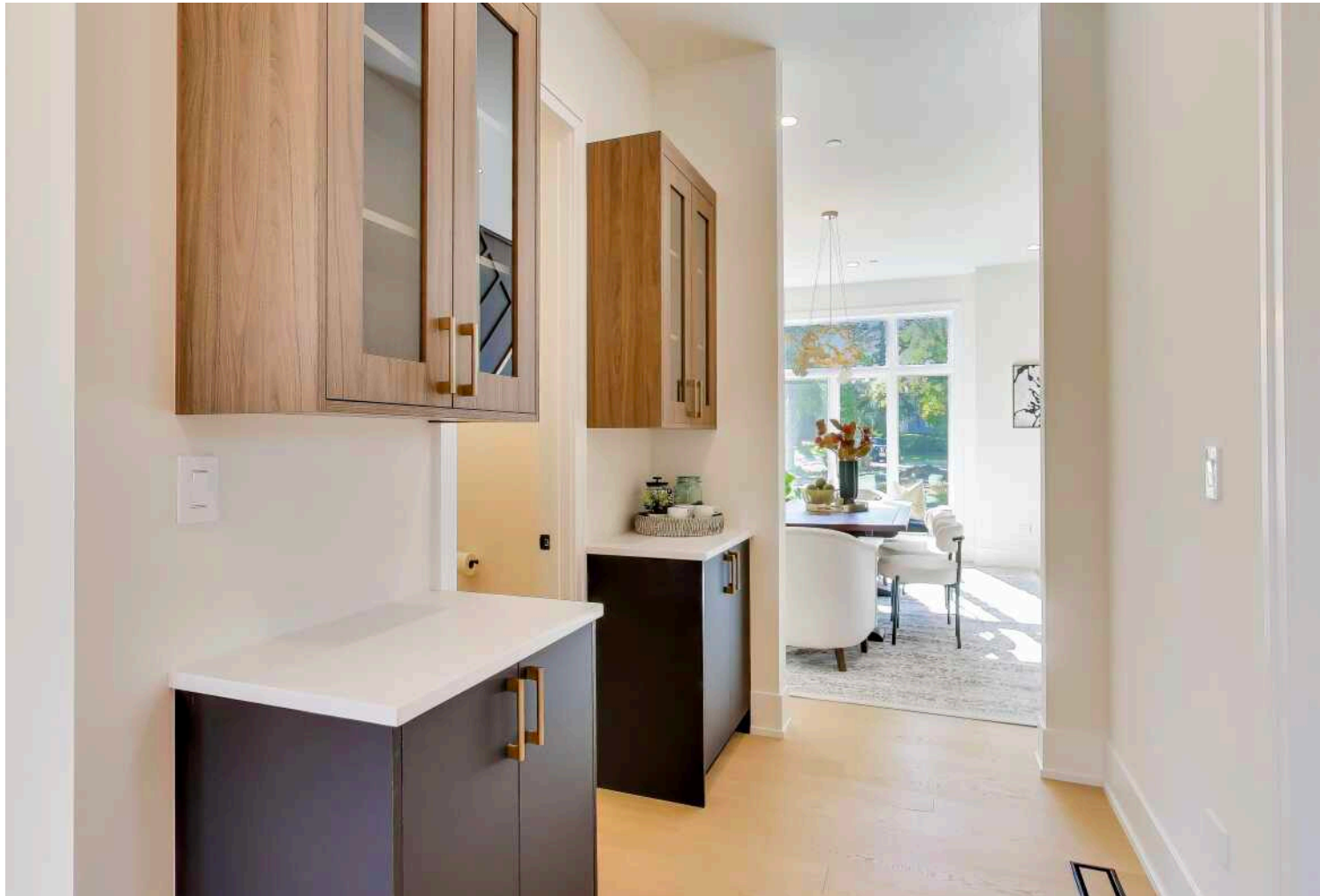
LIVING



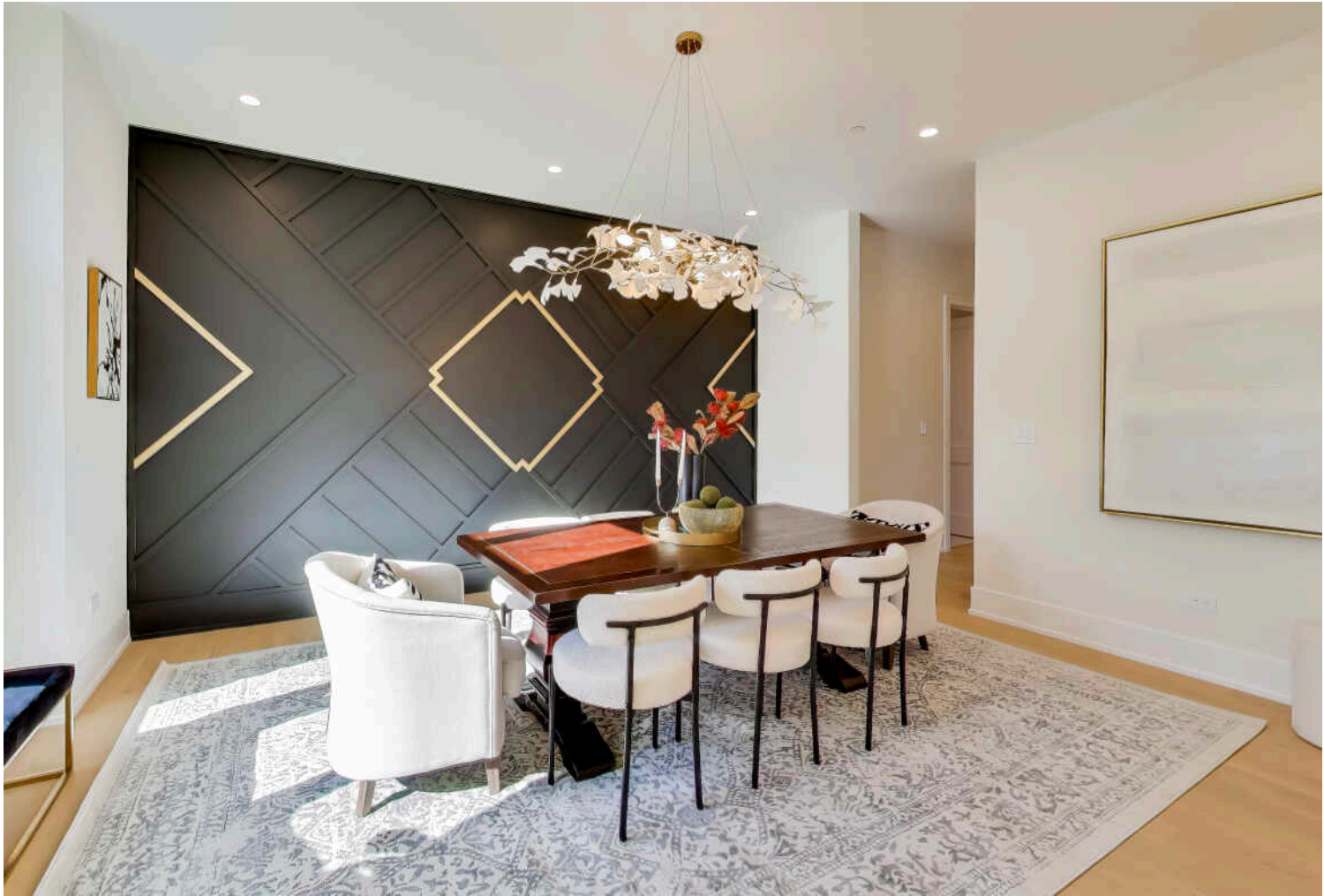


OFFICE





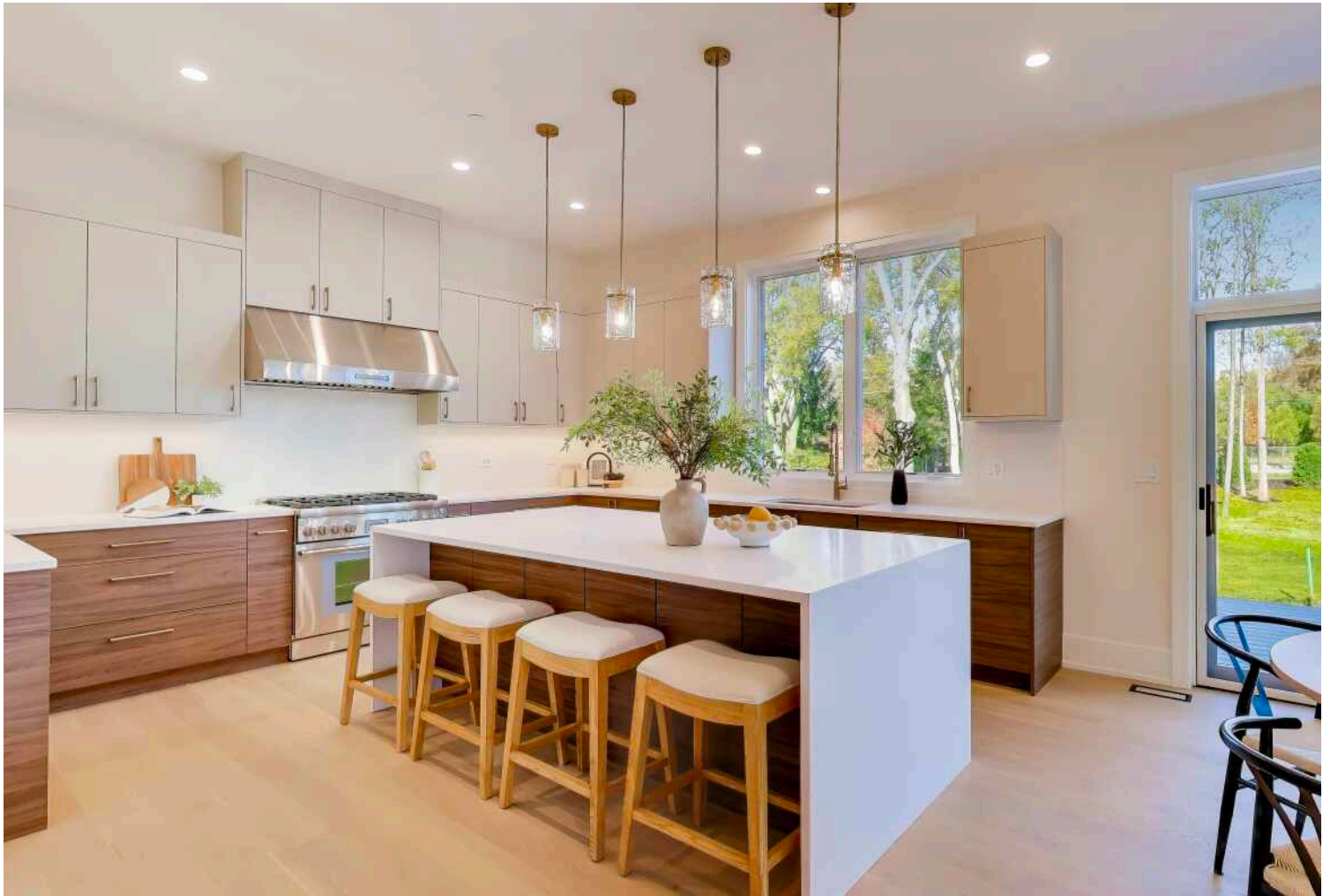
BUTLERS' PANTRY



DINING







KITCHEN

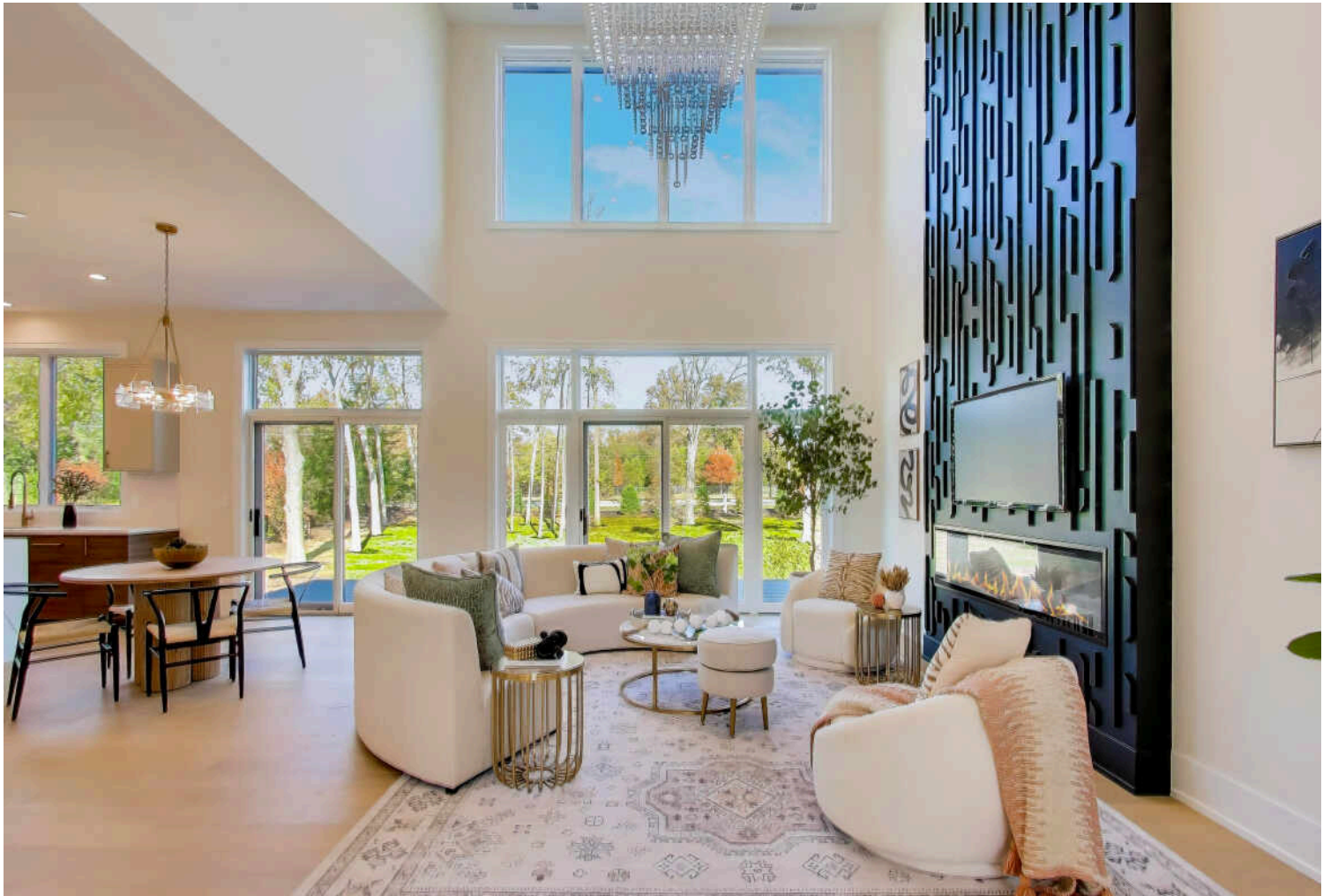








BREAKFAST



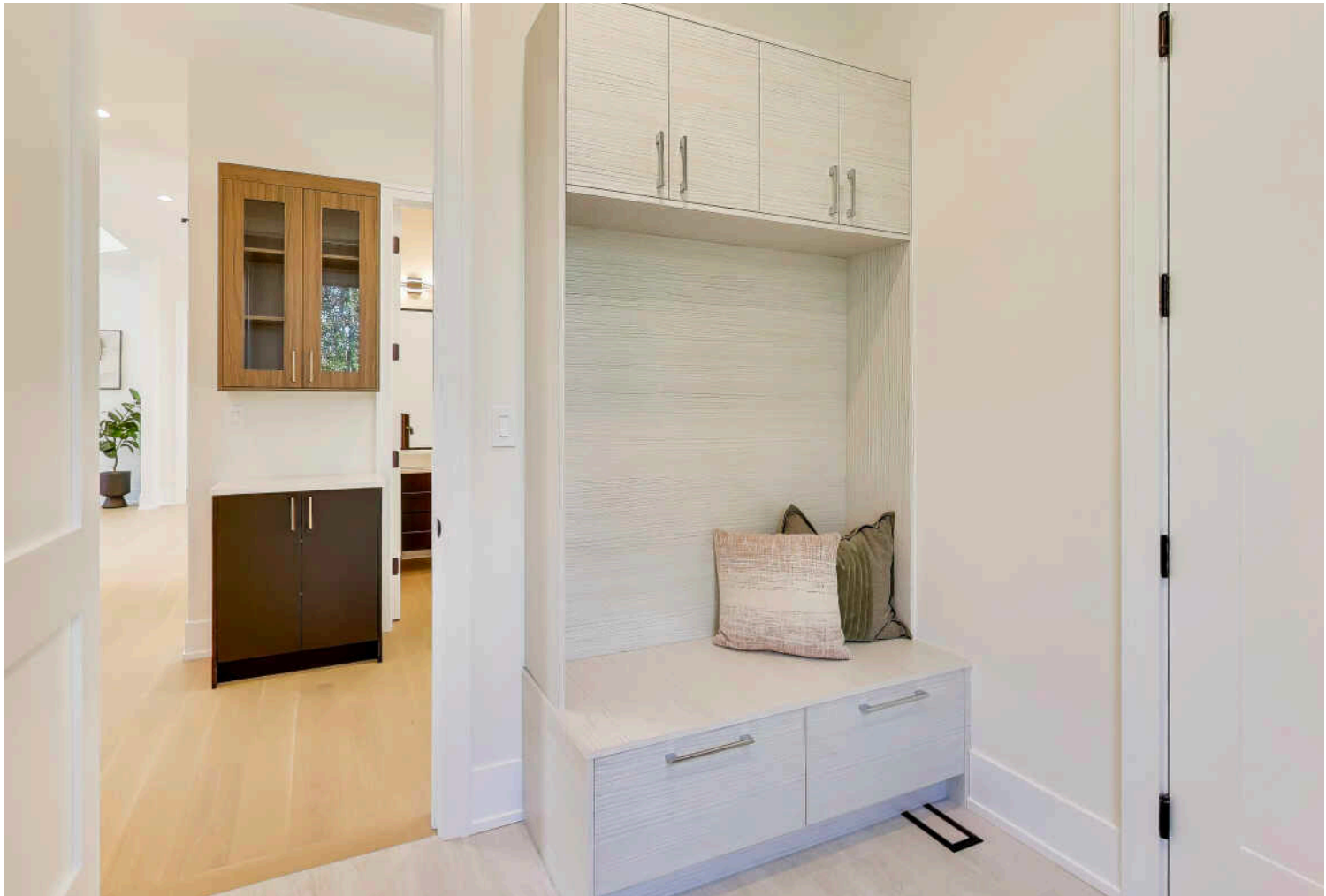
FAMILY











MUDROOM/LAUNDRY





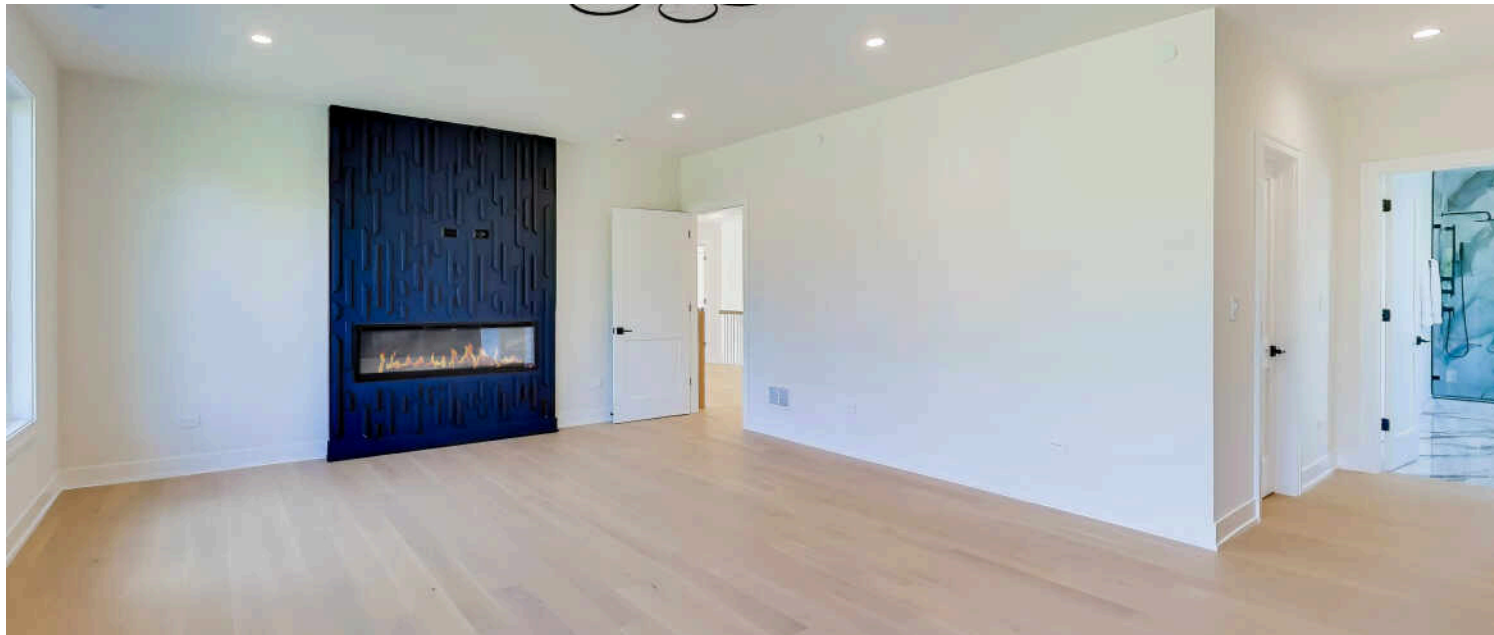
BEDROOM



ENSUITE



PRIMARY BEDROOM







ENSUITE





ENSUITE





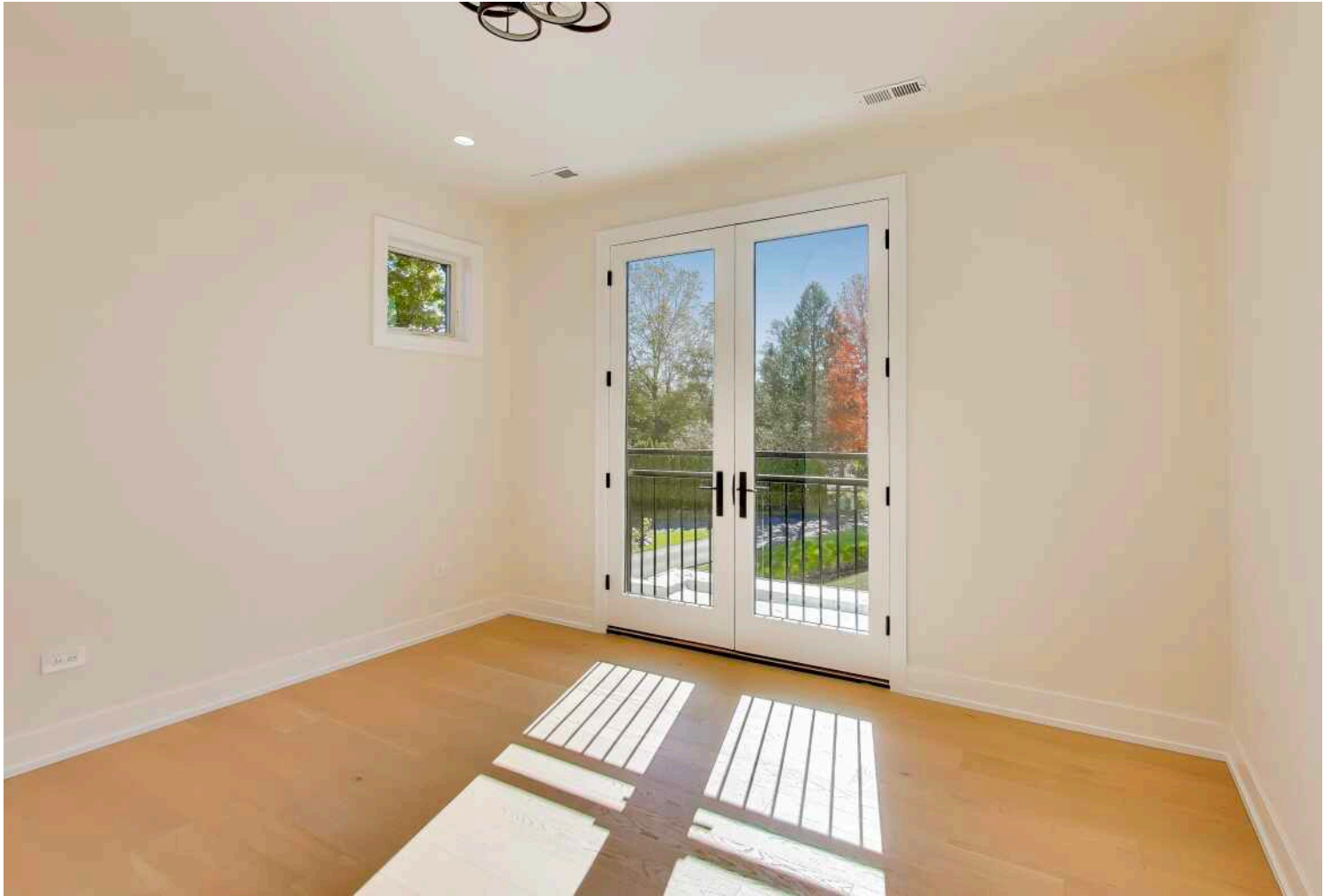


ENSUITE



ENSUITE





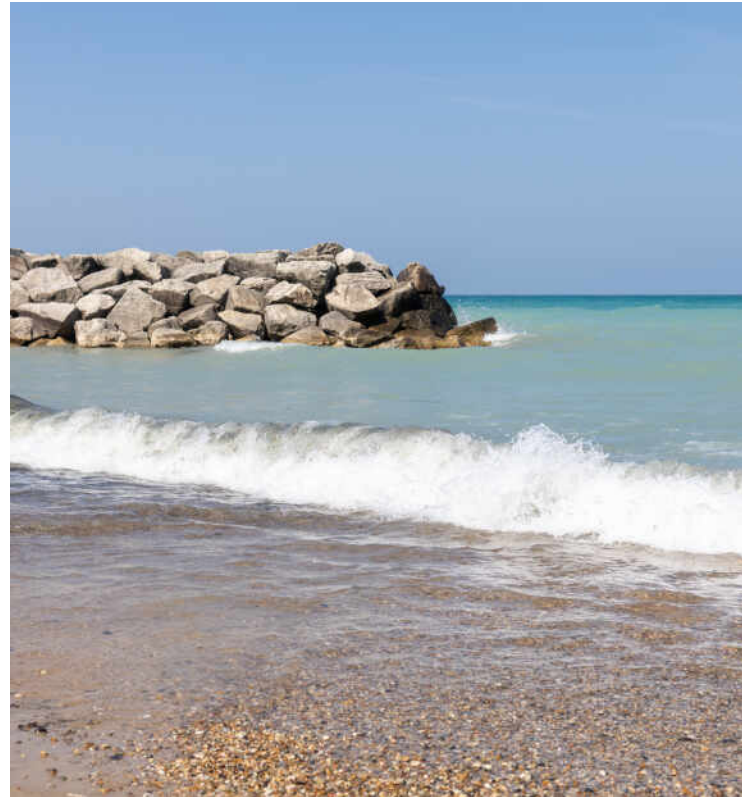
BEDROOM





BAR





## YOU HAD ME AT RAVINIA – YET THERE’S SO MUCH MORE TO LOVE ABOUT HIGHLAND PARK.

*Locals love the community's vibrant business district and popular cultural attractions including Ravinia – the North Shore's one-of-a-kind outdoor music festival.*

Located 23 miles north of downtown Chicago, Highland Park is known for its vibrant downtown business district, abundant recreational facilities, and world-class amenities.

The city is home to several landmarks, including homes designed by Frank Lloyd Wright. Highland Park also created the first community land trust in Illinois to develop and preserve high-quality affordable housing for residents.

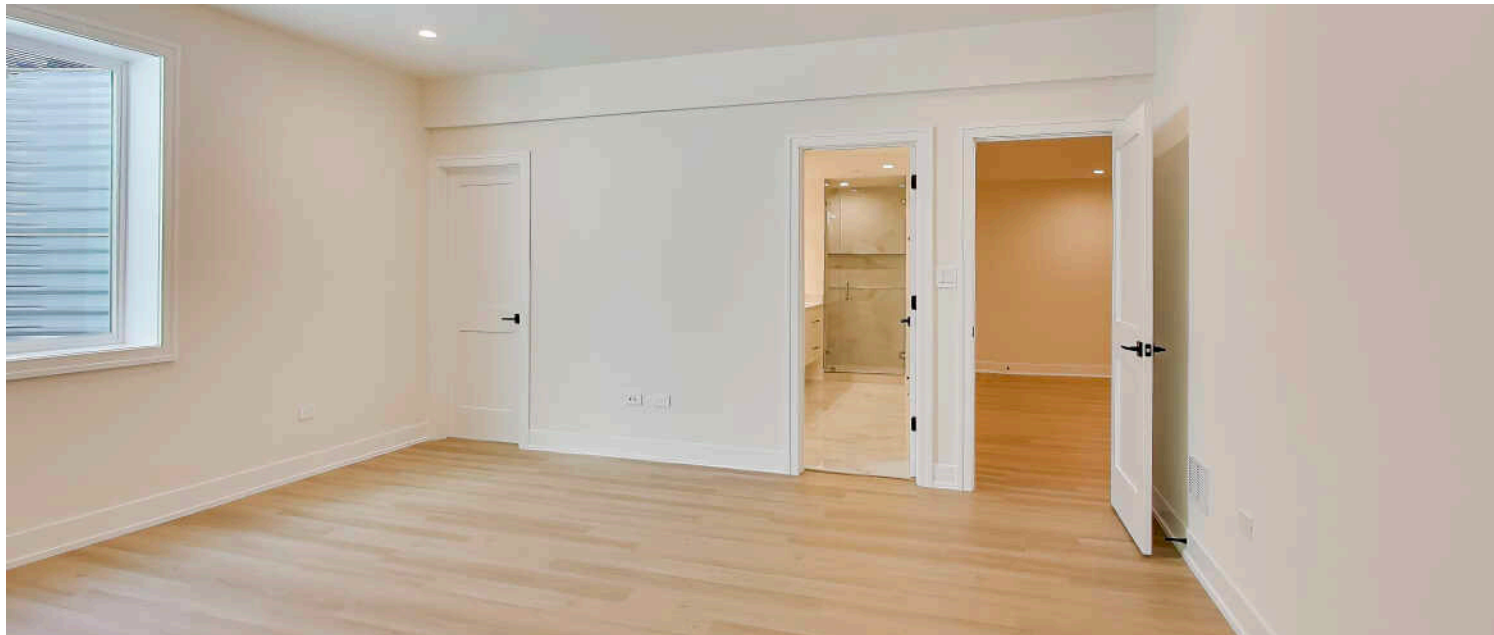
High-end homes in Highland Park range from custom lakefront mansions to multi-million-dollar contemporary estates. Mid-century moderns and in-town bungalows are plentiful, while a number of luxury condominiums offer maintenance-free living close to downtown shops, restaurants, and commuter train stations.

Residents enjoy two public beaches and the North Shore Yacht Club, a not-for-profit membership organization for sailors, kayakers, power boaters, and stand-up paddle boarders. Downtown Highland Park thrives year-round thanks to an eclectic mix of businesses including local restaurants, national retailers, and upscale boutiques.

Highland Park shines brightest in the summertime, when the sprawling outdoor Ravinia Festival welcomes the Chicago Symphony Orchestra and a diverse lineup of popular musicians. Ravinia attracts concert-goers from near and far, including locals and city-dwellers who can hop on the Metra train that conveniently stops at the festival gates.



SEMI-ENSUITE







GYM



LAUNDRY

