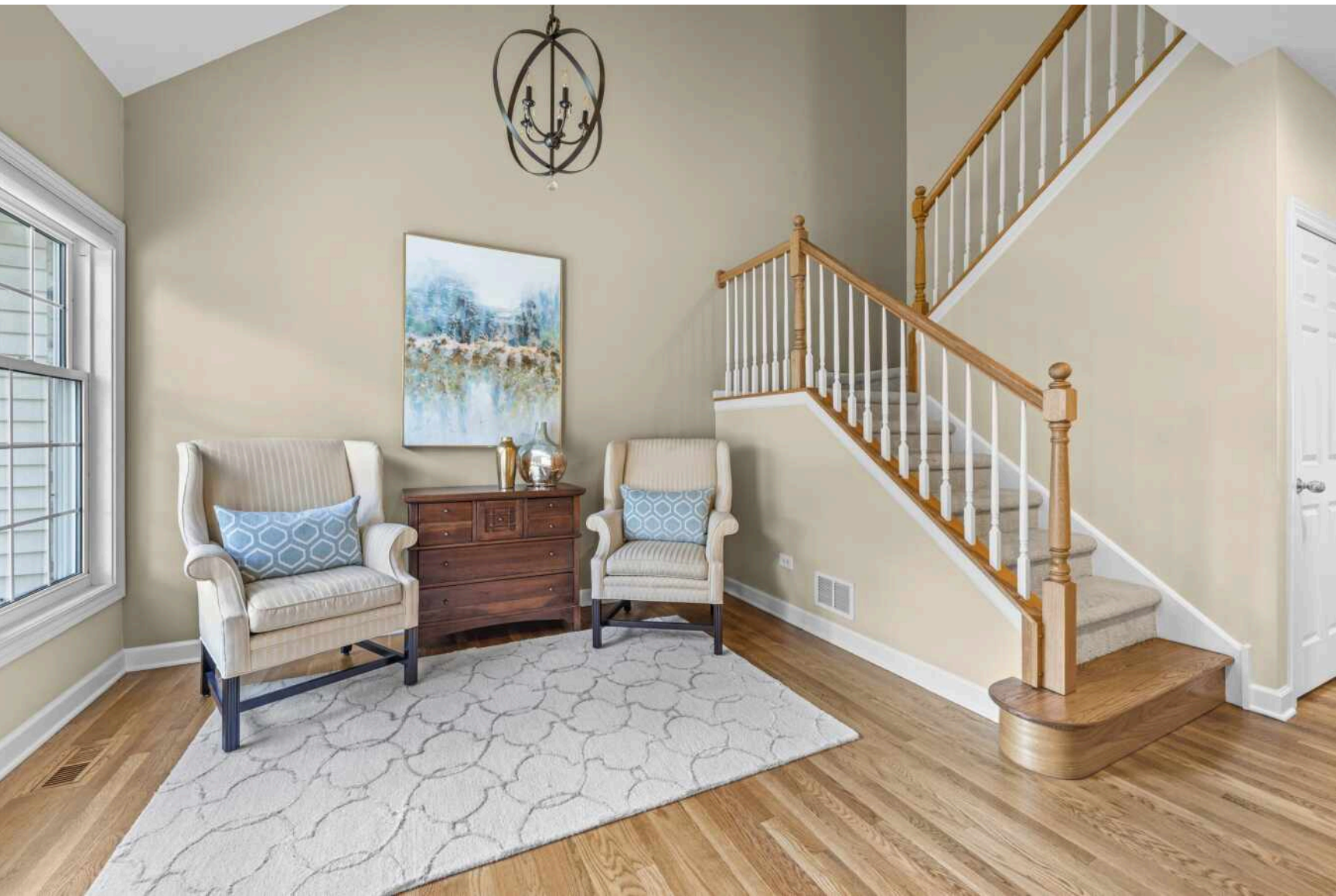




184 RED TOP DRIVE
LIBERTYVILLE

@properties

CHRISTIE'S
INTERNATIONAL REAL ESTATE



ROOM DIMENSIONS

DINING ROOM : 13' × 11'

FAMILY ROOM : 19' × 14'

KITCHEN : 26' × 14'

PRIMARY BEDROOM : 18' × 13'

BEDROOM 2 : 13' × 13'

BEDROOM 3 : 12' × 12'

BEDROOM 4 : 13' × 13'

RECREATION ROOM : 24' × 18'

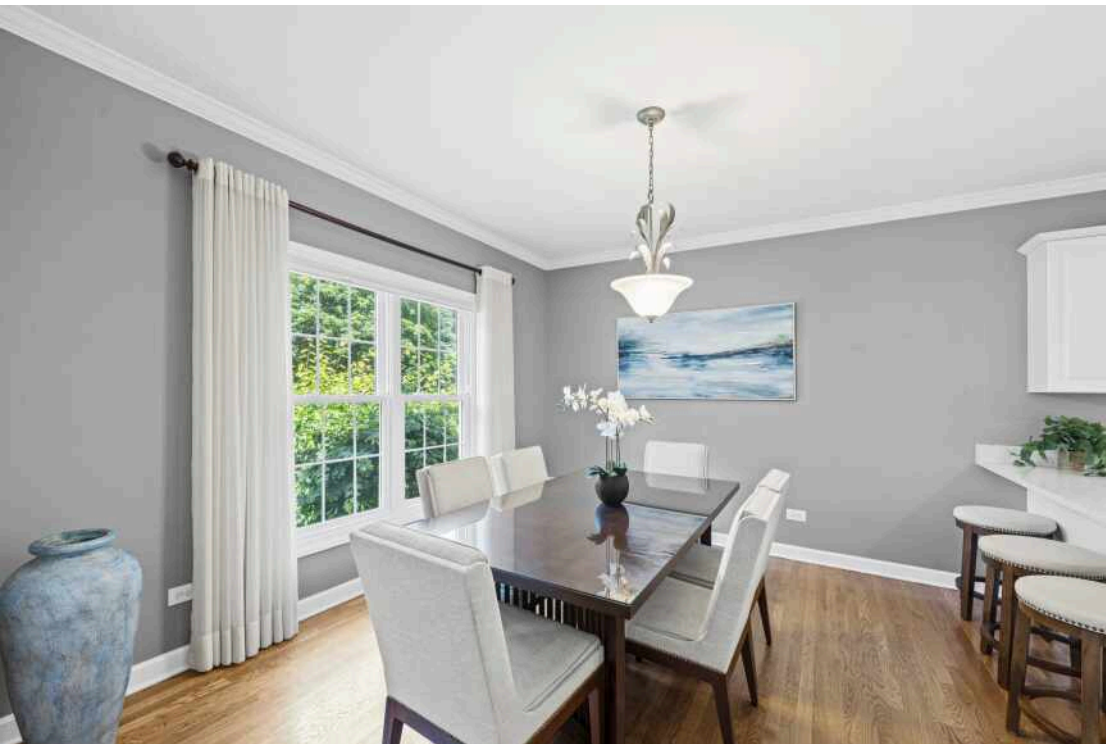
4 BEDROOM

3.1 BATH

STUNNING TOWNHOME

Rare opportunity to own this executive style townhome with very desirable amenities including volume ceilings throughout including 9', cathedral or vaulted ceilings in most rooms and an open floorplan that flows. This home is truly turnkey and offers a welcoming entry with a flex space perfect as a dining room, sitting room, den or reading nook. The family room is a terrific space for both family and friends. The beautiful WB fireplace, hardwood floors and scenic views through sliders to deck (with remote controlled awning) offers an amazing space for those intimate gatherings while also being spacious and open to the fabulous kitchen making it perfect for entertaining. Enjoy cooking? You're going to love this oversized kitchen with plenty of lovely white 42" cabinets, beautiful quartz counters including breakfast bar, stainless appliances, walk in pantry, hardwood floors, and generous breakfast/dining room. The second level is highlighted by a primary suite with french entry, vaulted ceiling, and luxurious bath with whirlpool tub, shower, dual sink vanity and large walk in closet. The two remaining bedrooms are large and feature closets with built-ins. The second floor laundry also makes washing clothes an easier task. No lugging up and down stairs but there's also laundry hook up in the basement if you prefer to move it there. You've got options. The fabulous, finished English lower level offers a large recreation room with plenty of natural lighting, an additional bedroom and lovely full bath. Need storage space? No worries...there's a generous storage room with utility sink. Even the 2.5 car garage is fully drywalled and ready for your sweet ride. Great location close to shopping, banks and more.

- Low Association Fee
- Spacious turnkey interior









Not To Scale By Client's Request. Measurements are approximate and subject to change.



Not To Scale By Client's Request. Measurements are approximate and subject to change.



Not To Scale By Client's Request. Measurements are approximate and subject to change.



LIBERTYVILLE OWES MUCH OF ITS EARLY GROWTH TO THE RAILROAD.

A spur on the Milwaukee Road train line brought rapid growth to the area, which was incorporated in 1882.

Today the Metra rail system provides a convenient commute for residents of this vibrant community.

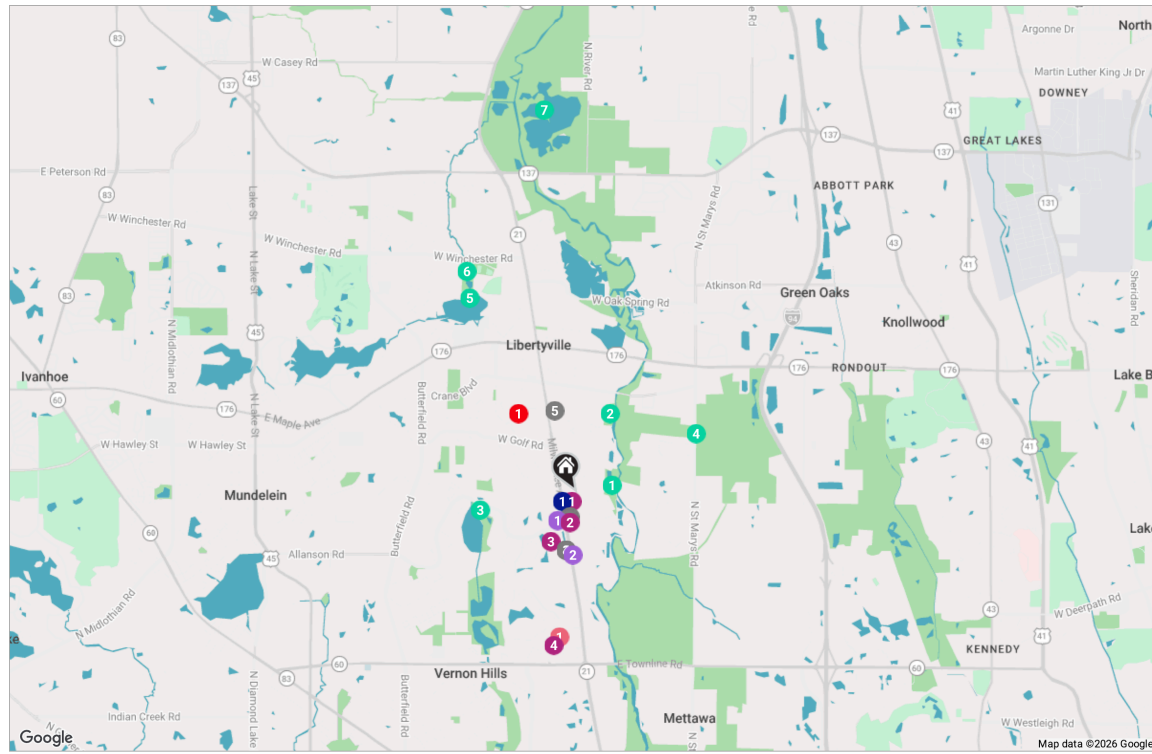
Libertyville's bustling downtown district received a Great American Main Street Award by the National Trust for Historic Preservation. The downtown was rebuilt after a fire in 1895 destroyed most of the buildings; they were rebuilt with mandated brick reconstruction, giving them a singular style.

The downtown area includes bakeries, gourmet coffee vendors, and a microbrewery. In spring and summer months, residents enjoy a farmers market that has been operating for more than three decades.

In addition to a variety of restaurants, there are upscale boutiques, antique shops, and gift stores along Milwaukee Avenue.

Residents have eight miles of bike paths and numerous parks to enjoy along with the annual Libertyville Days Festival, an outdoor concert series, and other community events.

Three Metra stations and the Tri-State Tollway make for a convenient commute to downtown Chicago, O'Hare International Airport, and suburban corporate headquarters.



NOTES _____

RESTAURANTS

- 1 La Mera Mera
1428 SOUTH MILWAUKEE AVENUE,
0.2 MI
- 2 Lou Malnati's Pizzeria
1436 SOUTH MILWAUKEE AVENUE,
0.2 MI
- 3 Starbucks Coffee Company
1640 NORTH MILWAUKEE AVENUE,
0.5 MI
- 4 Jersey Mike's Subs
1640 NORTH MILWAUKEE AVENUE
SUITE 200, 0.5 MI
- 5 Panera Bread
832 SOUTH MILWAUKEE AVENUE,
0.8 MI

SHOPPING

- 1 Jewel-Osco
1300 SOUTH MILWAUKEE AVENUE,
0.1 MI
- 2 Walgreens
1470 SOUTH MILWAUKEE AVENUE,
0.3 MI
- 3 Mariano's
1720 NORTH MILWAUKEE AVENUE,
0.5 MI
- 4 Hawthorn Mall
122 HAWTHORN CTR, 1.4 MI
- GROCERY**
- 1 ALDI
1800 NORTH MILWAUKEE AVENUE,
0.3 MI

MEDICAL

- 2 Trader Joe's
1600 SOUTH MILWAUKEE AVENUE,
0.6 MI
- 1 Advocate Condell Medical
Center
801 S MILWAUKEE AVE, 0.9 MI

ENTERTAINMENT

- 1 AMC Hawthorn 12
675 HAWTHORN CTR, 1.3 MI

TRANSIT

- 1 Milwaukee Ave & Red Top
Dr
UNITED STATES, 0.1 MI

PARKS

- 1 Red Top Park
LIBERTYVILLE, 0.3 MI
- 2 Riverside Park
LIBERTYVILLE, 0.8 MI
- 3 Lake Charles Park
11 GREGGS PARKWAY, 0.9 MI
- 4 Old School Forest Preserve
28285 NORTH SAINT MARYS ROAD,
1.2 MI
- 5 Butler Lake
819-761 LAKE ST, 2.0 MI
- 6 Butler Lake Park
835 W WINCHESTER RD, 2.3 MI
- 7 Independence Grove Forest
Preserve
16400 BUCKLEY ROAD, 3.5 MI



KARINA KOLB-FORMENTO

BROKER, MBA

847.687.4680

KARINAKOLBFORMENTO@ATPROPERTIES.COM

