

1855 N DAMEN AVE UNIT 2S BUCKTOWN

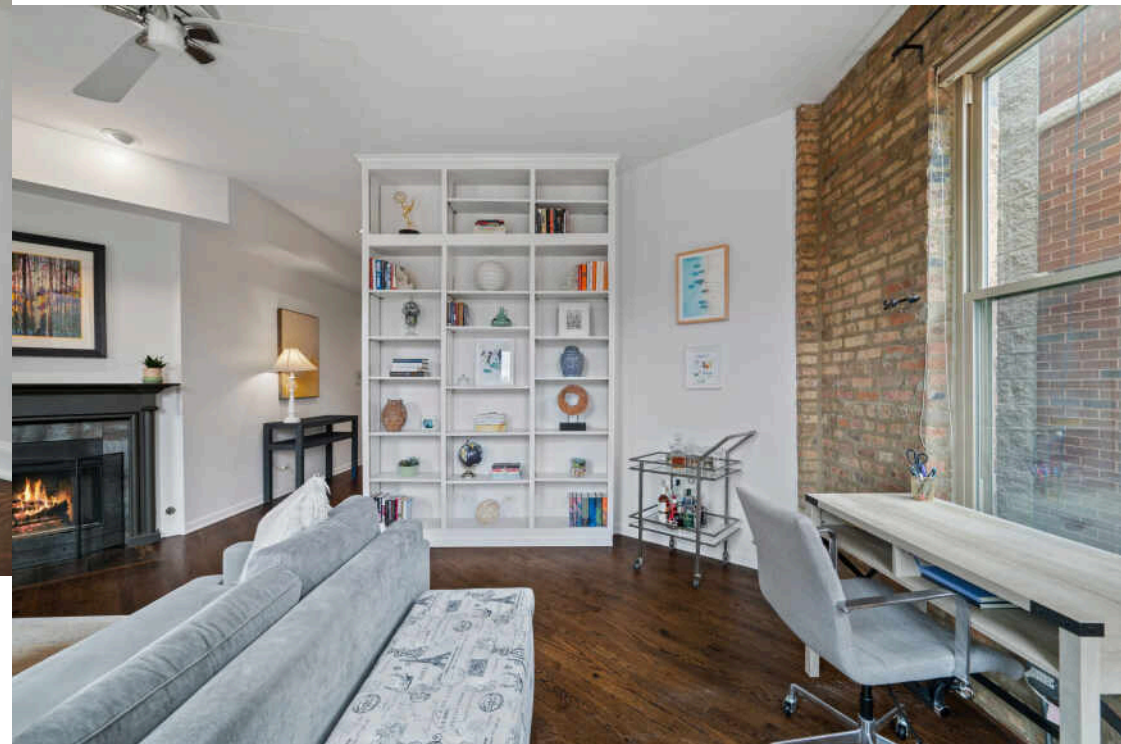
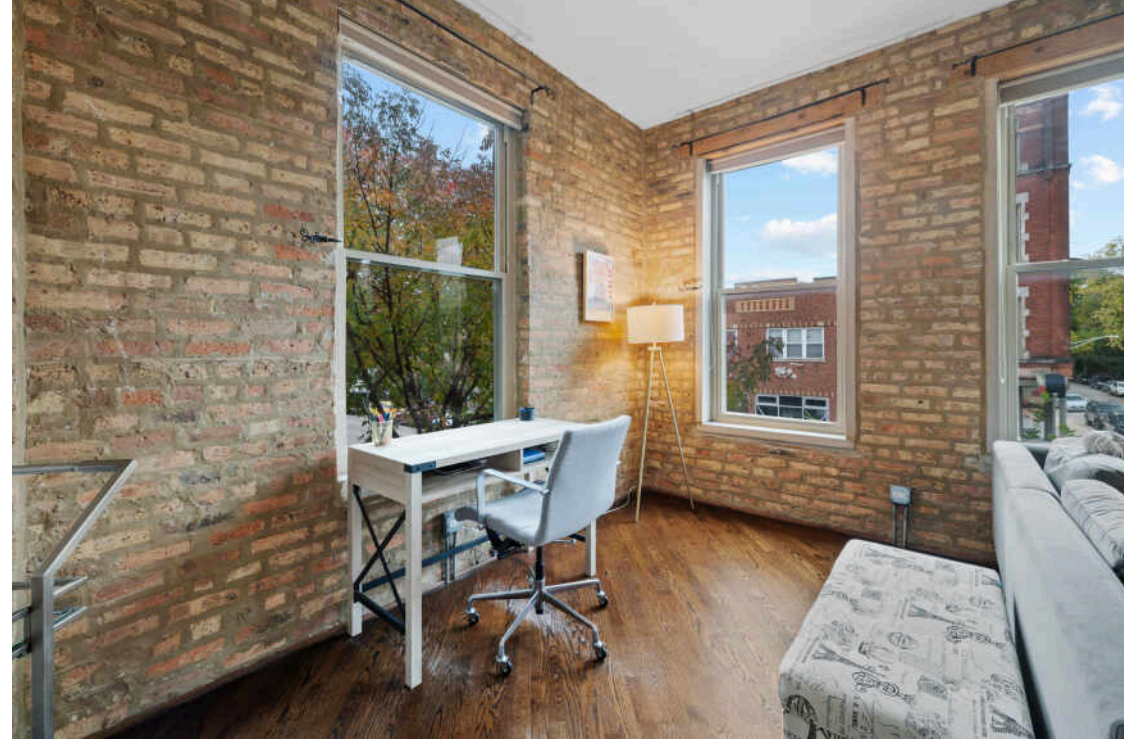


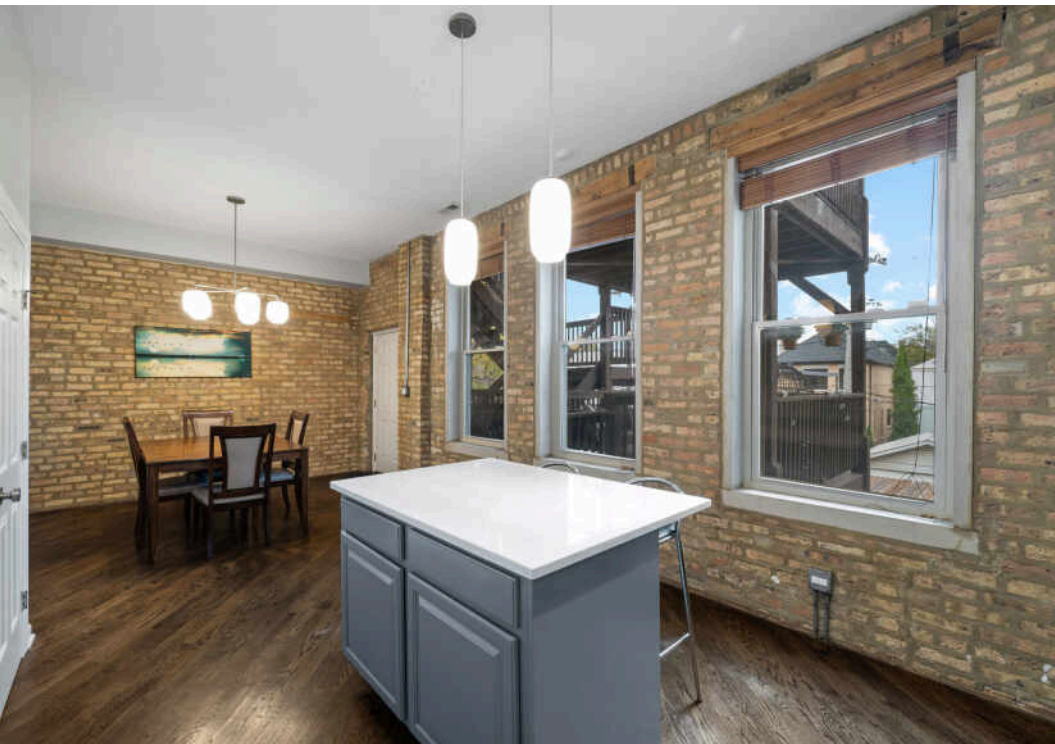


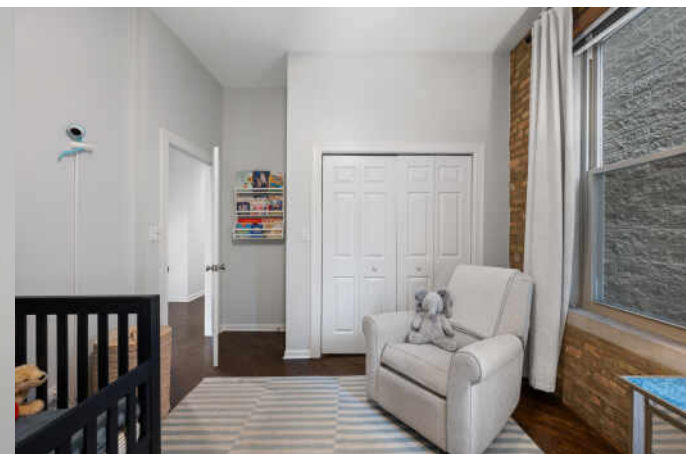
2 BEDROOM
2 BATH
TAXES: \$8,616
ASSESSMENTS: \$304

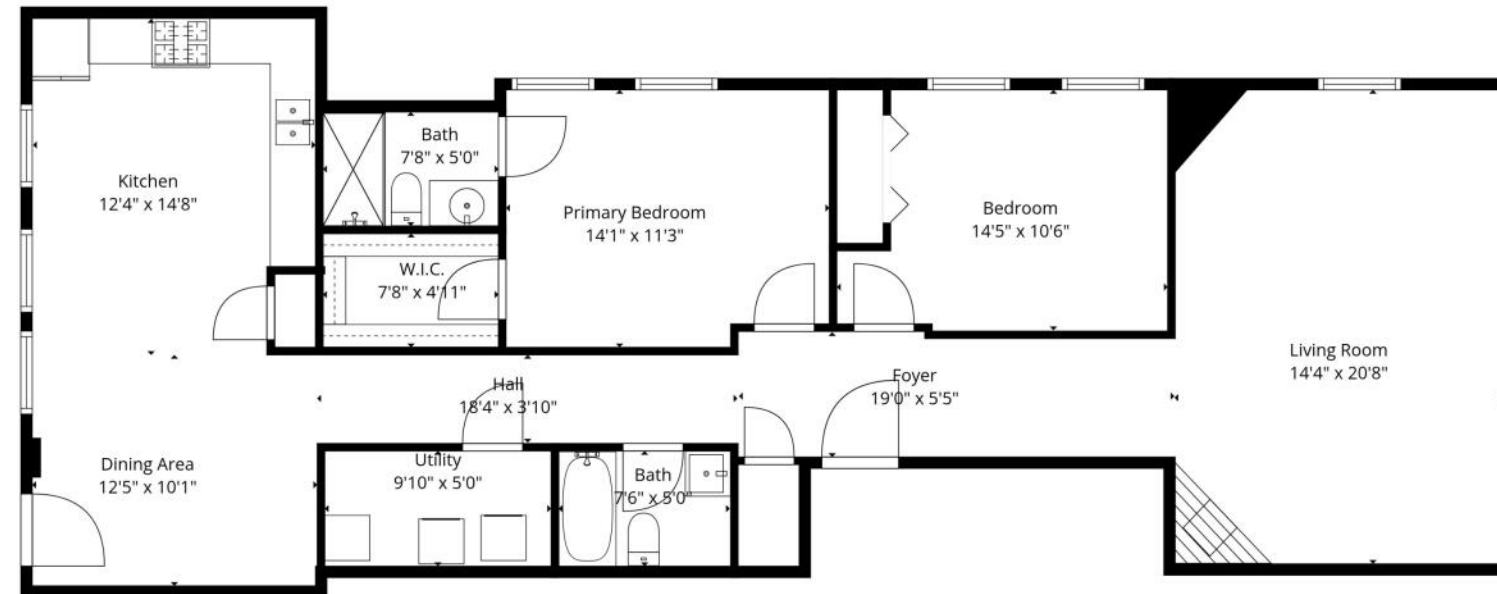
CHARACTER, LIGHT & SPACE IN PRIME BUCKTOWN

Situated in the heart of Bucktown, this spacious and thoughtfully updated 2 bed, 2 bath condo stands apart from the typical floor plan. The home offers an ideal blend of character, functionality, and modern finishes, with exposed brick, soaring ceilings, and dark hardwood floors creating warmth and visual interest throughout. At the front of the unit, a large, light-filled living room features built-in bookshelves and a fireplace, creating a comfortable setting for everyday living or cozy winter nights. Toward the rear, the kitchen is flooded with natural light and provides exceptional space for cooking and gathering, complete with quartz countertops, ample cabinetry, subway tile backsplash, pantry, and a dedicated dining area. Just off the kitchen, a sizable rear deck creates seamless indoor-outdoor flow and is well suited for grilling, outdoor dining, and warm-weather relaxation. The generous primary suite includes a large organized walk-in closet and en suite bath with walk-in shower, while the second bedroom offers flexibility for guests, a home office, or nursery. Additional highlights include abundant interior storage, a walk-in laundry room, large additional storage space, and deeded gated parking. All of this in an unbeatable Bucktown location just steps from the 606 Trail, shopping and dining along Damen and Milwaukee, and convenient access to the CTA Damen Blue Line and nearby expressways.









Floor Plan Created By Cubicasa App. Measurements Deemed Highly Reliable But Not Guaranteed.





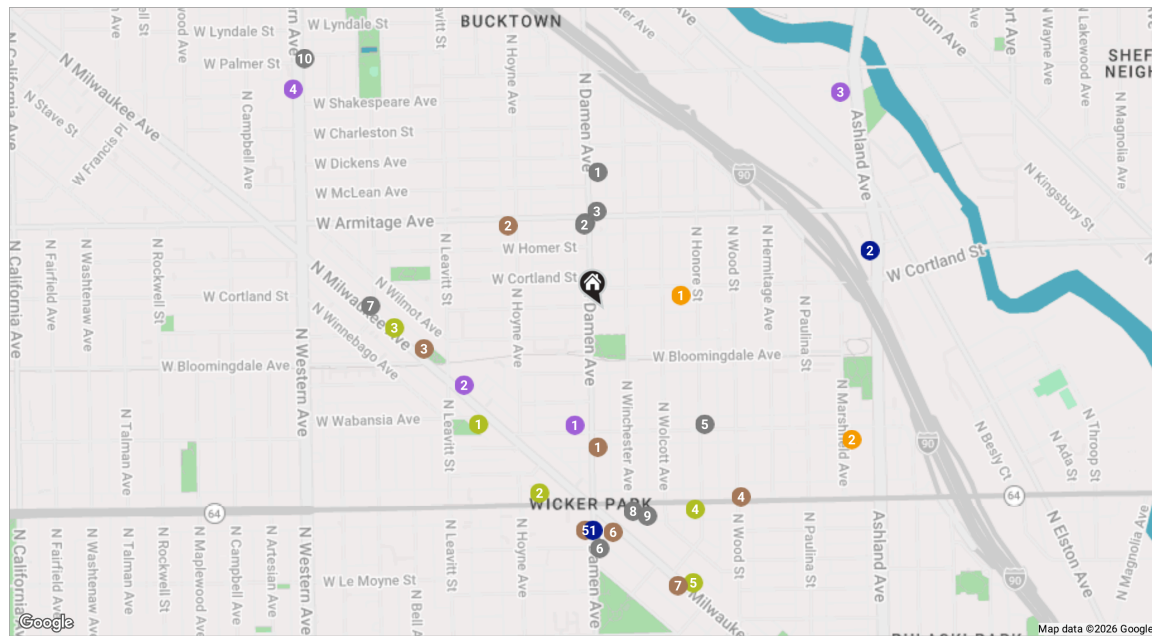
AS AN ARTISTS' COMMUNITY, NIGHTLIFE HOTSPOT, FOODIE DESTINATION, AND SHOPPING MECCA, **BUCKTOWN** IS UNDISPUTEDLY ONE OF CHICAGO'S TRENDIEST NEIGHBORHOODS.

Bucktown's restaurant scene is diverse and local friendly. Residents also enjoy a unique mix of independent bookstores, shops, bars, galleries, and theaters. Meanwhile, upscale retailers have made the neighborhood a designer destination.

Overlooking the six corners intersection, a stunning Art Deco skyscraper is now a modern boutique hotel with a rooftop bar and amazing views. A stately historic bank building on the corner is now home to a pharmacy with stunning archways and stained-glass ceilings.

Located a few miles northwest of The Loop, Bucktown has a variety of housing including modern new construction, stately brownstones, and loft apartments and condominiums.

Between the CTA's Blue Line, the 606 Trail, and numerous bus routes, it's easy for residents to get to surrounding neighborhoods. Likewise, drivers appreciate being able to hop on the expressway just east of the community.



RESTAURANTS

- 1 Coast Sushi Bar
2045 NORTH DAMEN AVENUE, 0.2 MI
- 2 Le Bouchon
1958 NORTH DAMEN AVENUE APT 3,
0.2 MI
- 3 Mirra
1954 W ARMITAGE AVE, 0.2 MI
- 4 Pompette
1960 N DAMEN AVE, 0.2 MI
- 5 Club Lucky
1824 WEST WABANSIA AVENUE, 0.3 MI
- 6 Big Star Wicker Park
1531 NORTH DAMEN AVENUE, 0.4 MI
- 7 Irazu Costa Rican
Restaurant & Catering
1865 NORTH MILWAUKEE AVENUE,
0.4 MI
- 8 Piece Pizzeria and Brewery
1927 W NORTH AVE, 0.4 MI

- 9 Paradise Park | Pizza & Patio
1913 W NORTH AVE, 0.4 MI
- 10 Chef's Special Cocktail Bar
2165 N WESTERN AVE, 0.7 MI

COFFEE

- 1 The Goddess and Grocer
Bucktown
1649 NORTH DAMEN AVENUE, 0.2 MI
- 2 Starbucks Coffee Company
2101 WEST ARMITAGE AVENUE, 0.2 MI
- 3 Ipsento 606
1813 N MILWAUKEE AVE, 0.3 MI
- 4 Gallery Cafe
1760 WEST NORTH AVENUE, 0.4 MI
- 5 La Colombe Coffee
Workshop
1552 NORTH DAMEN AVENUE, 0.4 MI
- 6 Brü Chicago
1562 NORTH MILWAUKEE AVENUE,
0.4 MI

- 7 The Wormhole Coffee
1462 NORTH MILWAUKEE AVENUE,
0.5 MI

GROCERY

- 1 Olivia's Market
2014 WEST WABANSIA AVENUE, 0.2 MI
- 2 ALDI
1753 NORTH MILWAUKEE AVENUE,
0.3 MI
- 3 Mariano's
2112 N ASHLAND AVE, 0.6 MI
- 4 Agora Market
2134 NORTH WESTERN AVENUE, 0.7 MI

GYM

- 1 CorePower Yoga - Bucktown
1704 NORTH MILWAUKEE AVENUE,
0.3 MI
- 2 Bucktown Athletic Club
2040 WEST NORTH AVENUE, 0.3 MI

- 3 Zen Yoga Garage
1845 NORTH MILWAUKEE AVENUE,
0.4 MI

- 4 Pure Barre
1837 WEST NORTH AVENUE, 0.4 MI
- 5 Barry's Wicker Park
1457 N MILWAUKEE AVE, 0.5 MI

SCHOOLS

- 1 Drummond Montessori
Magnet School
1845 WEST CORTLAND STREET, 0.1 MI
- 2 Jonathan Burr Elementary
School
1621 WEST WABANSIA AVENUE, 0.5 MI

TRANSIT

- 1 Damen
CTA - BLUE LINE, 0.4 MI
- 2 Clybourn
METRA - UNION PACIFIC NORTHWEST,
0.5 MI

NOTES



TIM MCLOUGHLIN

C: (773) 251-7493

O: (773) 254-0200

TMCLOUGHLIN@ATPROPERTIES.COM

WWW.TIMMCLOUGHLIN.COM

