

1855 WELLINGTON PLACE

HOFFMAN ESTATES





ROOM DIMENSIONS

LIVING ROOM : 19' × 11'

DINING ROOM : 8' × 8'

KITCHEN : 17' × 11'

PRIMARY BEDROOM : 17' × 11'

SECOND BEDROOM : 12' × 8'

THIRD BEDROOM : 11' × 8'

RECREATION ROOM : 17' × 16'

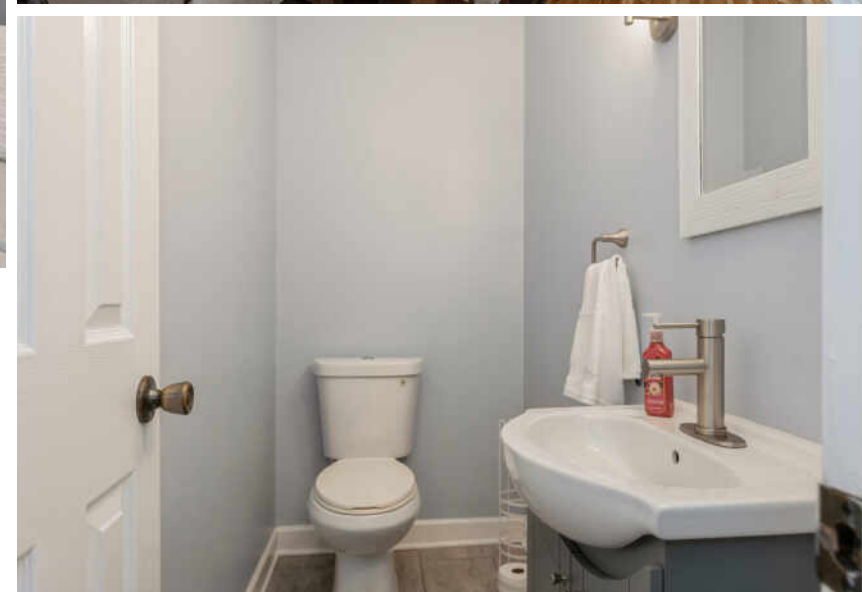
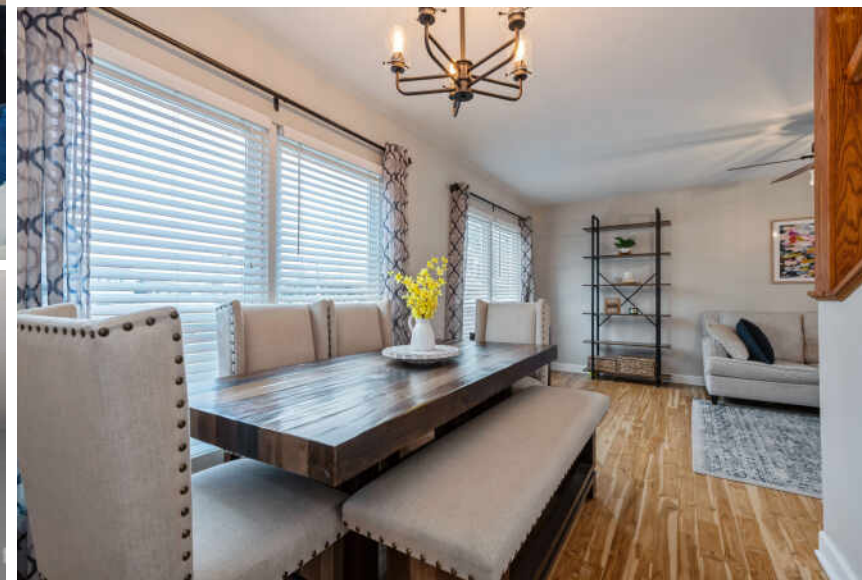
3 BEDROOM

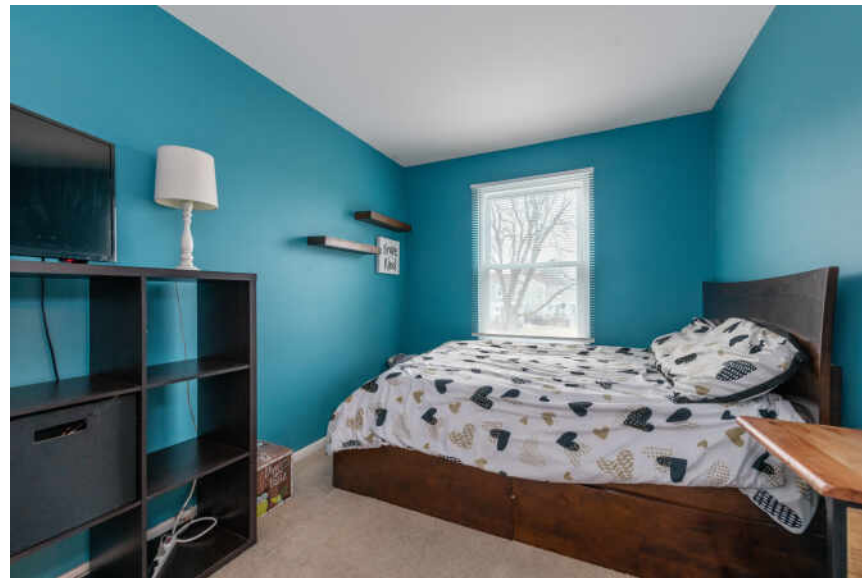
1.1 BATH

TAXES: \$5,677

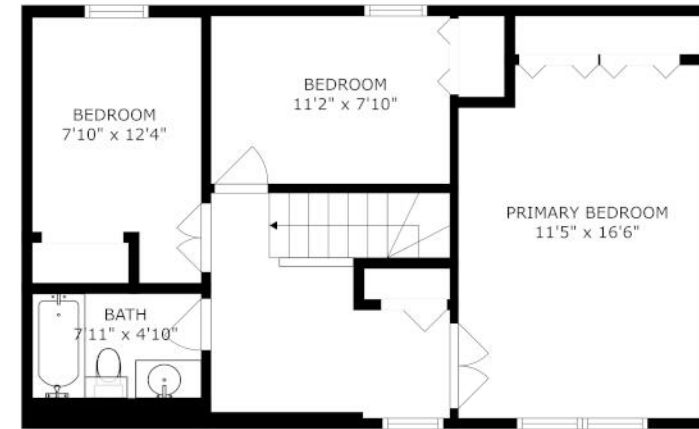
ASSESSMENTS: \$219 / MONTH

Discover this delightful 3-bedroom, 1.5-bath townhouse offering a comfortable and convenient lifestyle. The main level features a bright living room, dining area, a kitchen with island and sliding doors leading to the yard, and a convenient half bath. Upstairs, you'll find 3 generous bedrooms and a loft space perfect for a home office or study area. The lower level boasts an inviting basement with a spacious family/recreation room and utility area with plenty of storage. Ideally located, just steps away from the neighborhood playground, clubhouse with a party room, pool, basketball courts, and more. With easy access to highways, shopping, restaurants, and the award-winning Hoffman Estates Park District, everything you need is within reach. Plus, benefit from highly-rated District 54 & 211 schools. This is more than a home-it's a lifestyle. Don't miss out!

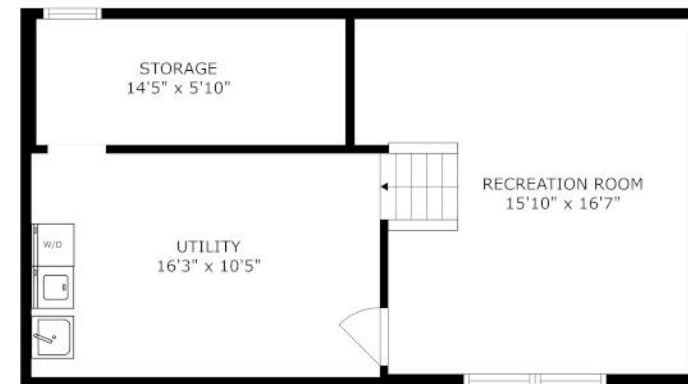




FLOOR 2



FLOOR 3



FLOOR 1

SIZES AND DIMENSIONS ARE APPROXIMATE, ACTUAL MAY VARY.



TREE-LINED STREETS, ABUNDANT GREEN SPACE, AND AMPLE RECREATIONAL ACTIVITIES CHARACTERIZE THE VILLAGE OF **HOFFMAN ESTATES.**

The community offers easy access to nearby nature attractions such as the Spring Valley Nature Center & Heritage Farm in Schaumburg and the Deer Grove Forest Preserve in Palatine. Meanwhile, Bridges of Poplar Creek Country Club features an 18-hole golf course with over 6,000 yards of fairways and greens. Golf aficionados also take to the Hilldale Golf Club and Highland Woods Golf Course.

The village is most notably home to the Now Arena, providing sports, musical, and theatrical entertainment throughout the year. Residents also enjoy trying different cuisines at Hoffman Estates’ many restaurants.

In the summertime, locals and visitors gather at the Seascope Family Aquatic Center, where they can swim, dig in the sand, and go down any of the four water slides. Other recreational facilities include the Triphahn Community Center & Ice Arena, Willow Recreation Center, and the Club at Prairie Stone.

Hoffman Estates is located along I-90 and has access to major regional roadways such as Illinois Routes 58, 59, 62, and 72. Commuters are also served by two Metra rail lines, the Union Pacific Northwest Line and the Milwaukee District West Line.



LATASHA CHEDDA

6302173000

LATASHACHEDDA@ATPROPERTIES.COM



CHRISTIE'S
INTERNATIONAL REAL ESTATE

All specifications, features, designs, price, assessments, taxes and materials are subject to change without notice. Depicted floor plans and architectural renderings are only an artist's impression.

