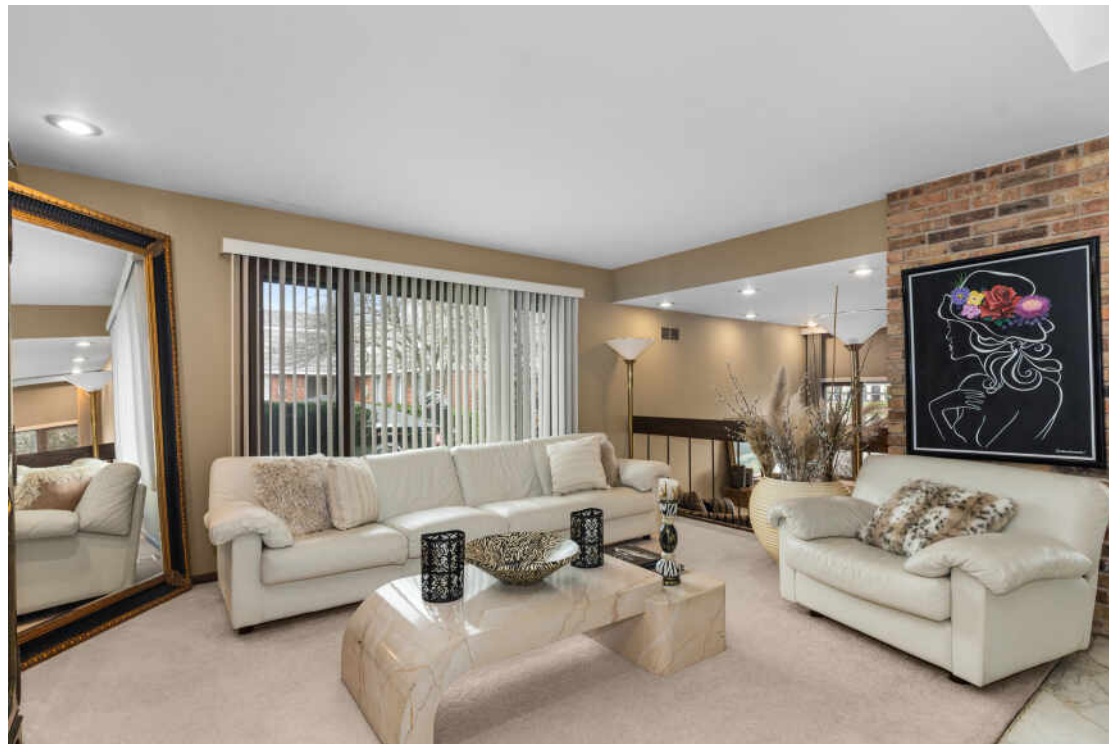


1865 ELIZABETH COURT

DEERFIELD

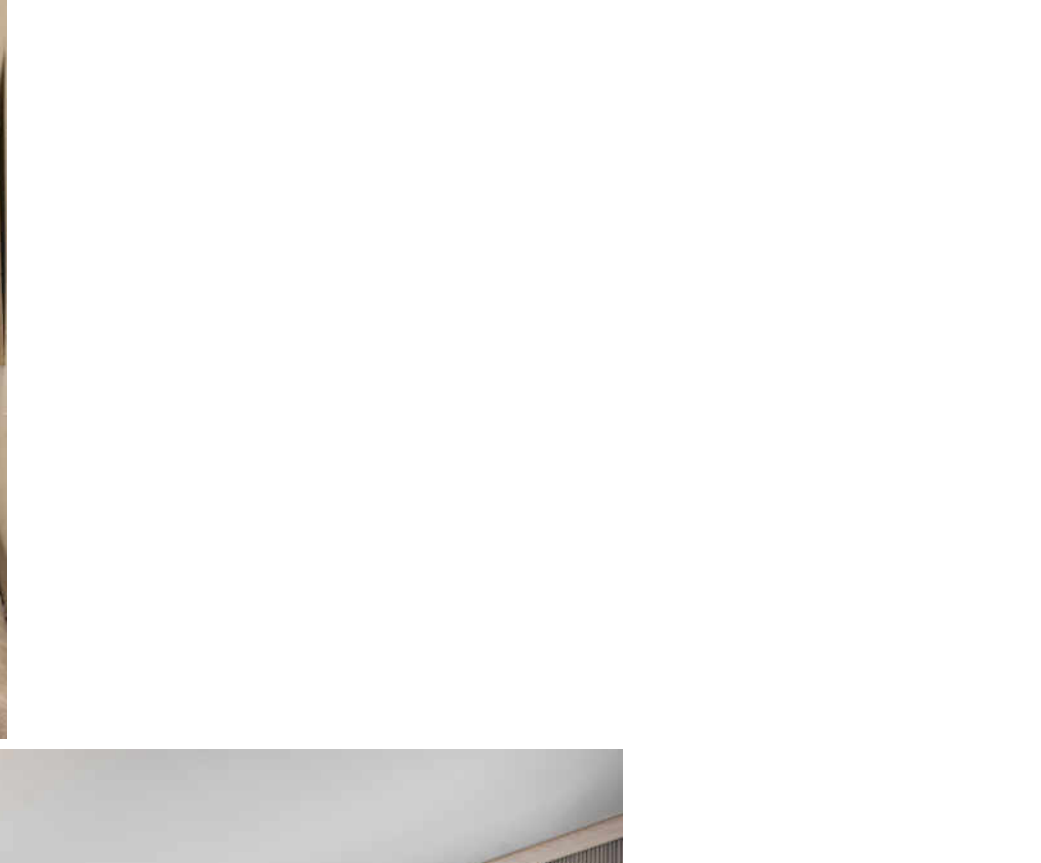


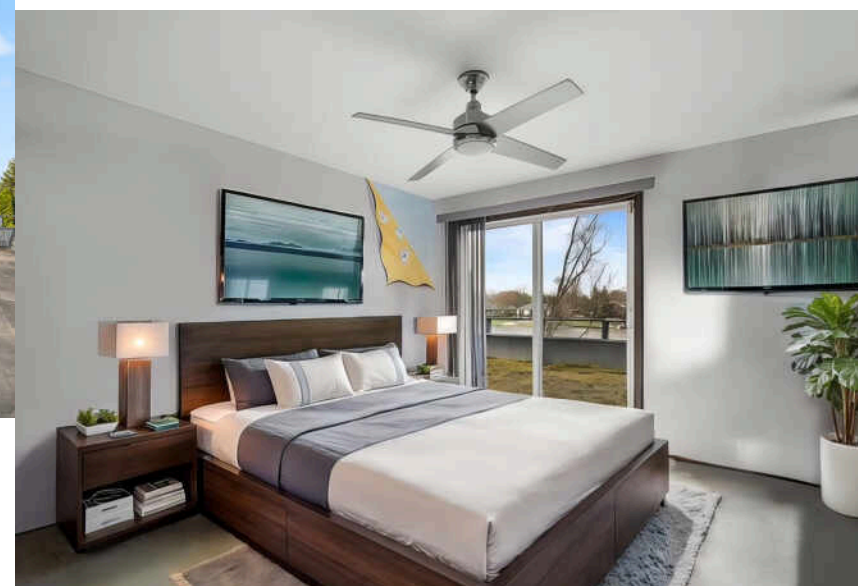


1865 ELIZABETH COURT - DEERFIELD

- Incredible opportunity to live on coveted Lake Eleanor!
- This beautifully maintained 4 bedroom, 3 1/2 bath contemporary colonial offers over 3,000 sq ft of spacious living on a serene private lake.
- The open-concept main level features a dramatic atrium entry, formal living and dining rooms, a private office plus mudroom/laundry that leads to 2 car garage.
- The large kitchen is equipped with wood cabinetry, Corian countertops, tile flooring and a generous eat-in area - perfect for entertaining.
- Sunlit family room with hardwood floors and a double-sided fireplace opens to a spacious wood deck with breathtaking lake views.
- Cozy sitting room with fireplace offers a quiet retreat.
- Upstairs, the primary suite includes a walk-in closet, private bath and sliders to an expansive second-floor balcony.
- Three additional bedrooms share a hall bath, with bedrooms 2 and 3 also offering access to balcony.
- The walk-out lower level adds even more living space with a large recreation room, wet bar, full bath and direct access to the lakeside patio.
- Live like you're on vacation every day!











DEERFIELD BOASTS THE BEST OF BOTH
WORLDS – THE AMENITIES AND
CONVENIENCES OF CITY LIVING WITH THE
CHARM OF A SMALL TOWN.

Touting a variety of housing options, Deerfield offers condominiums, townhomes, and single-family homes in a wide range of architectural styles and prices.

When it comes to amenities, Deerfield checks all the boxes. Deerfield Square includes an assortment of shops, restaurants, and boutique workout studios, while the Sachs Recreation Center offers an indoor pool, tennis courts, gymnasiums, fitness classes, and more. Another popular attraction is the Deerfield Historic Village, where residents and visitors can explore buildings dating back to the 1800s.

The community is home to Deerfield High School, which ranks among the top high schools in Illinois, according to *U.S. News and World Report*.

With two Metra stations and proximity to the Tri-State Tollway and Edens Expressway, Deerfield puts residents within easy reach of downtown Chicago, O'Hare International Airport, and numerous corporate headquarters.



NOTES _____



BETH WEXLER, JOEY GAULT & LIZ SALINAS

THE WEXLER GAULT GROUP

(312) 961-6699 JOEY CELL

WEXLERGAULT@ATPROPERTIES.COM

THEWEXLERGAULTGROUP.COM



CHRISTIE'S
INTERNATIONAL REAL ESTATE