

187 RABBIT RUN

INGLESIDE



SLOKA PHOTOGRAPHY

@properties®

CHRISTIE'S
INTERNATIONAL REAL ESTATE



UNBELIEVABLY STUNNING, THIS CUSTOM FULL-LOG HOME SHOWCASES 10" DIAMETER DEAD-STANDING ENGELMANN SPRUCE CRAFTED IN A CLASSIC SWEDISH COPE DESIGN.

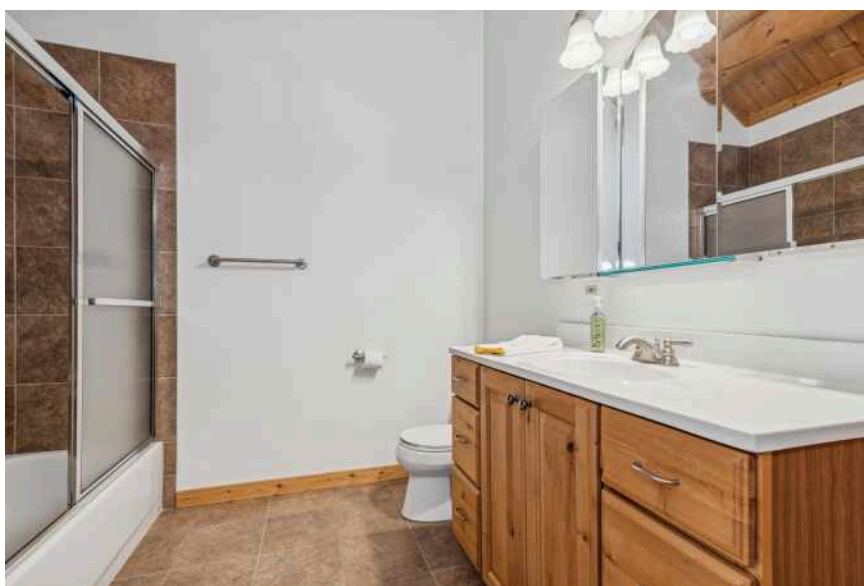
Perfectly set on a serene 1.3-acre site, it offers mature trees, bluestone patios & a full walkout lower level creating a true Northwoods retreat. Step inside to a breathtaking Great Room with towering vaulted ceilings & a dramatic 24-foot Acucraft stone fireplace featuring a bluestone hearth & steel chamber that efficiently circulates warm air. Crafted from four varieties of stone sourced from multiple quarries, the masonry continues across patios & accent walls inside & out. Double French doors open to a patio while a side door leads to a vaulted screened porch. The open-concept layout flows into the well-appointed dining area & kitchen with 42" cabinetry, granite counters, a pantry & abundant workspace. Enjoy the convenience of true one level living with two 1st floor bedrooms & laundry. The luxe primary suite offers a vaulted ceiling, private patio & balcony, along with a spa-inspired bath. A second main-floor bedroom & adjacent full bath provide flexible space for guests or a home office. Half-log stairs lead to the upper-level balcony overlook & a charming loft with built-ins. Two additional bedrooms with vaulted ceilings & a full bath complete this level. The finished walkout lower level is designed for fun with large rec area with Vermont Gas Stove, wet bar, game space, 5th bedroom & full bath. Over 500 sq ft of unfinished storage plus additional crawl space. Outdoors, enjoy peaceful evenings on the private bluestone patio under starry skies. A two-car attached garage & storage shed complete the package. With a community pier at Duck Lake & just minutes to the Chain O'Lakes, Millennium bike trails & nature preserves, this home offers year-round vacation-style living.















1st Floor



Basement 1



2nd Floor

TOTAL: 4528 sq. ft
 BELOW GRADE: 1237 sq. ft, 1st floor: 2006 sq. ft, 2nd floor: 1285 sq. ft
 EXCLUDED AREAS: BASEMENT: 556 sq. ft, PATIO: 1481 sq. ft, GARAGE: 529 sq. ft,
 SCREENED PORCH: 175 sq. ft, PORCH: 478 sq. ft, BALCONY: 33 sq. ft,



JOHN MORRISON

(847) 409-0297

JOHN@MORRISONHOMETEAM.COM

WWW.MORRISONHOMETEAM.COM

@MORRISON_HOME_TEAM



All specifications, features, designs, price, assessments, taxes and materials are subject to change without notice. Depicted floor plans and architectural renderings are only an artist's impression.

