

1881 N RIDGEVIEW ROAD
MICHIGAN CITY





ROOM DIMENSIONS

LIVING ROOM : 14.8' × 11.7'

FAMILY ROOM : 20.0' × 16.5'

DINING ROOM : 12.2' × 12.5'

KITCHEN : 12.1' × 13.1'

PRIMARY BEDROOM : 15.3' × 11.6'

SECOND BEDROOM : 13.1' × 13.0'

THIRD BEDROOM : 10.3' × 16.6'

BREAKFAST NOOK : 11.1' × 8.11'

FOYER : 6.2' × 18.4'

3 BEDROOM

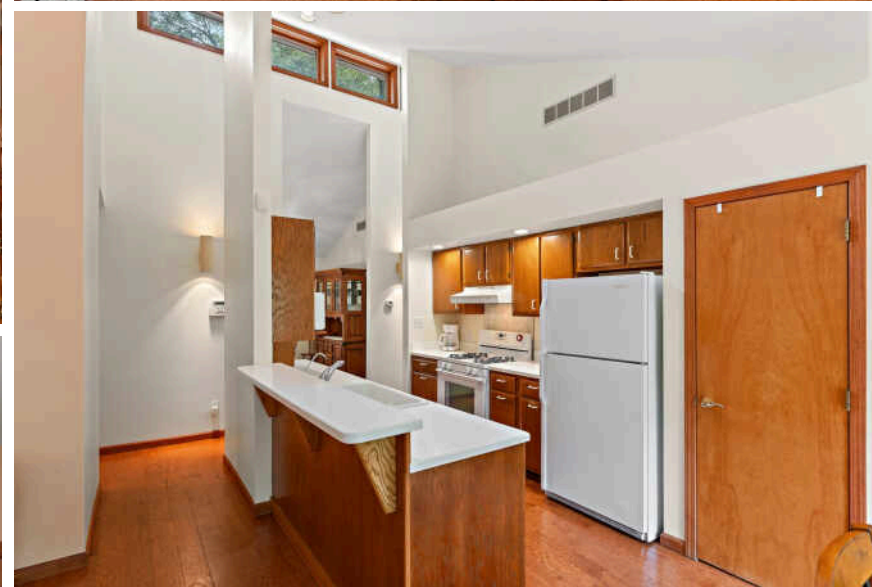
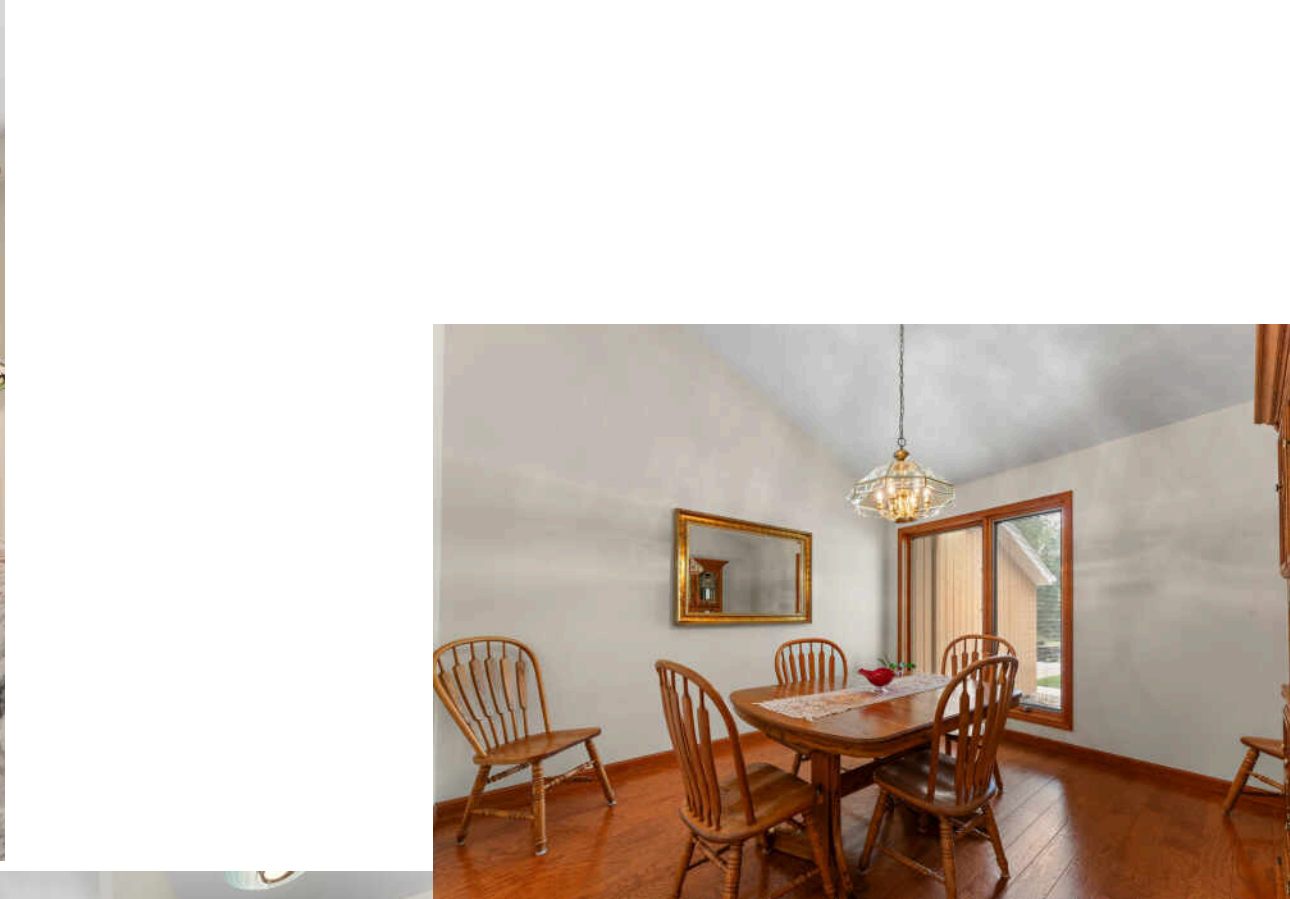
2 BATH

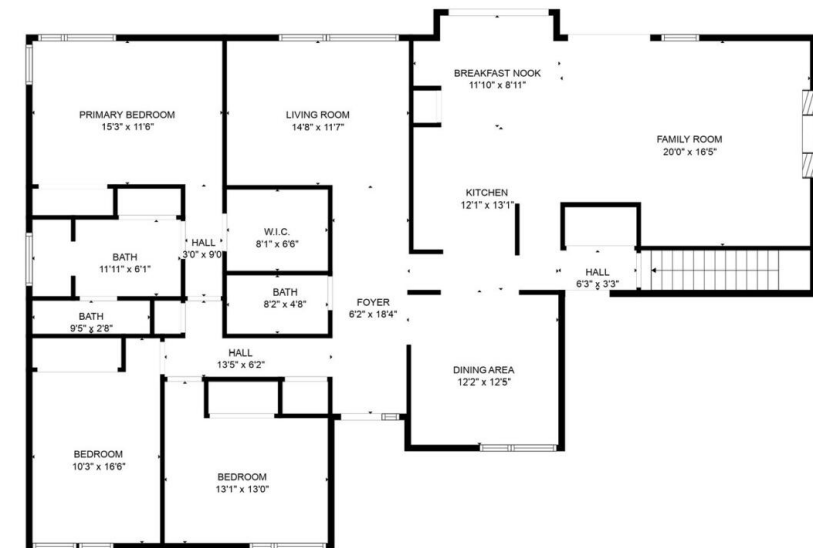
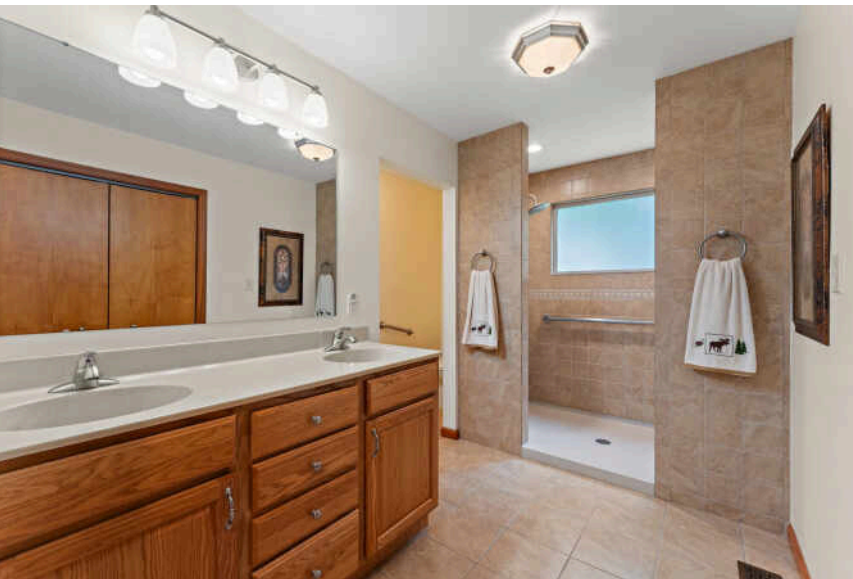
TAXES: \$2,217

MODERN COMFORT MEETS NATURAL CHARM IN RIDGEVIEW

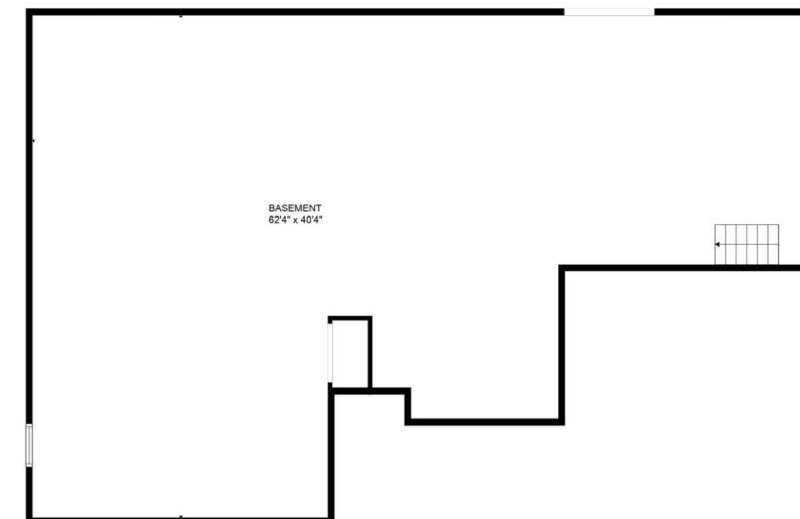
Welcome to this light-filled, contemporary ranch that's as spacious as it is stylish! This 3 Bedroom, 2 Bath gem offers over 2,000 sqft of beautifully maintained living space -- all on one level-- and an additional 2,051 sqft of dream-big potential in the walk-out basement. Step inside to discover gleaming hardwood floors that flow throughout the open-concept layout. The vaulted ceilings, skylights, and oversized windows make the living areas feel bright and airy, while the cozy gas fireplace in the family room adds the perfect touch of warmth.

- French doors lead you out to a generous deck, ideal for morning coffee, backyard BBQs, or just relaxing while you overlook your own wooded, fenced-in sanctuary.
- The Primary Suite is a retreat in itself, complete with a walk-in closet, large tiled shower, and water closet.
- With amazing curb appeal, nestled on a quiet, tree-lined street in the sought-after Ridgeview neighborhood, this home has the perfect blend of tranquility and convenience.
- Whether you're settling in or looking to expand, this is a rare opportunity to live comfortably now and grow into your future. Don't miss your chance to own a slice of quiet charm in a prime location!





FLOOR 2



FLOOR 1

Estimated 4,100 SQFT with Basement



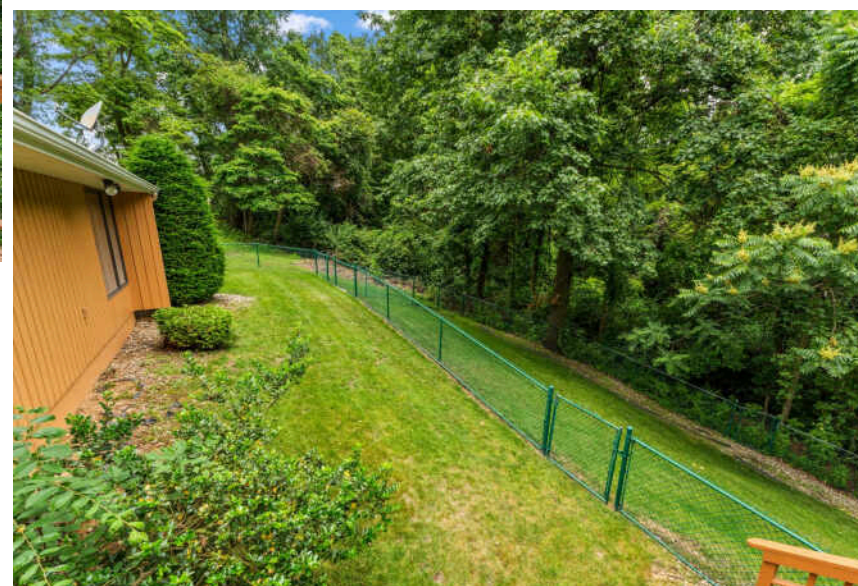
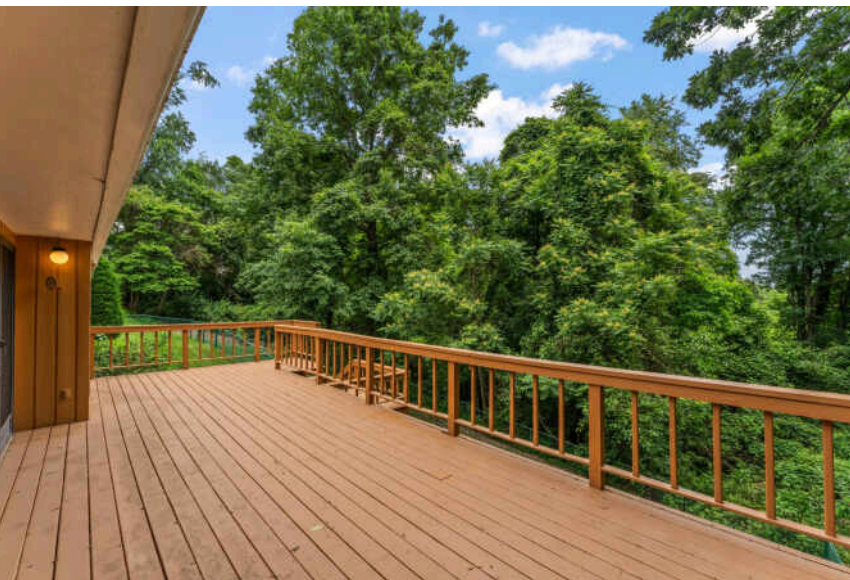
WITH PRISTINE BEACHES AND CLOSE PROXIMITY TO BOTH THE **INDIANA DUNES** AND THE SOUTH SHORE OF LAKE MICHIGAN, MICHIGAN CITY HAS IT ALL.

Home to the Old Michigan City Light, the community boasts one of the last remaining and oldest lighthouses in Indiana. Today, the Michigan City Historical Society operates the Old Lighthouse Museum for visitors to explore the historical landmark.

Residents take advantage of the many parks and beaches, as well as three golf courses. Washington Park is a local favorite, offering a beach, fishing, bird watching, hiking, picnic areas, sand volleyball, and ice skating in the winter. The nearby Washington Park Zoo is home to tigers, wolves, alligators, and grizzly bears. Michigan City's Blue Chip Casino Hotel Spa is a local getaway with a casino, dining options, and a spa. For shopping enthusiasts, the Lighthouse Place Premium Outlets features more than 100 factory stores in a park-like, village setting.

Michigan City real estate opportunities encompass beachfront cottages, grand vacation homes, and custom homes in gated resort communities.

The Michigan City Transit runs a local bus route, and both Amtrak and the South Shore Line offer daily service from Michigan City to Chicago.



NOTES _____



MICKY GALLAS

1 2198616012

1 2198747070

MICKYGALLAS@ATPROPERTIES.COM



BRAEDAN GALLAS

BROKER/CO-TEAM LEADER

M: (219) 229-1951

O: (219) 874-7070

BRAEDANGALLAS@ATPROPERTIES.COM

