

18 NEW HAVEN DRIVE #18
CARY



@properties®

CHRISTIE'S
INTERNATIONAL REAL ESTATE



WELCOME TO YOUR BRIGHT AND SUNNY TOWNHOME IN THE HIGHLY DESIRABLE CAMBRIA SUBDIVISION!

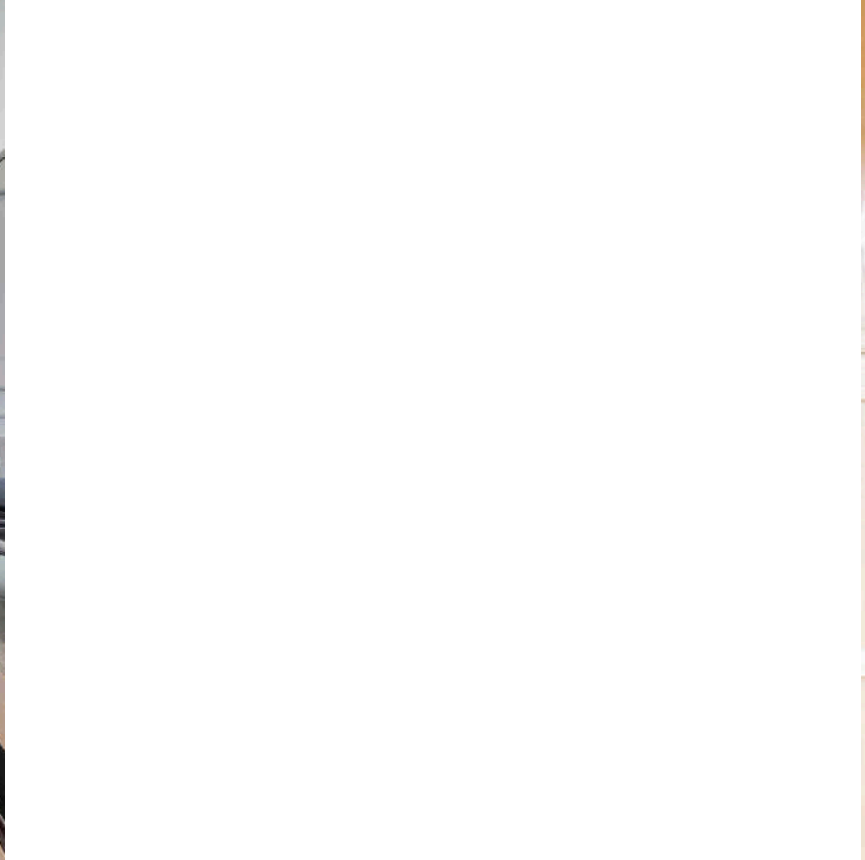
1928 sqft, 3-bedroom, 1.5-bath. This home offers three spacious levels and is tucked away in a cul-de-sac, overlooking professionally landscaped grounds, mature trees, and a serene outdoor setting. MAIN level features a large open-concept living, dining, and kitchen area. Living and dining spaces include laminate flooring, recessed lighting, and a three-sided fireplace. The spacious eat-in kitchen is complete with slate tile flooring, 42" oak cabinets, and newer stainless-steel appliances. Half-bath also features slate flooring. Kitchen provides direct access through sliding door to a private balcony with beautiful views of the park/pond, and gazebo. Laundry room has its own dedicated space alongside the mechanicals. SECOND level is dedicated to the bedrooms. The primary suite features vaulted ceilings and shares a full bath, with views overlooking the scenic wooded front setting. Two additional bedrooms and a linen closet complete the upper level. LOWER level offers flexible living space that can be used as a playroom, home office, gym, additional bedroom, or whatever best suits your needs. SCHOOL DISTRICT: Rare that this home resides within the highly sought-after Cary School District 26 and Cary-Grove High School. ADDITIONAL HIGHLIGHTS include: Furnace (2026), Garage Door Opener (2026), AC (2025), Water Heater (2024), Recessed Lighting in Living Room & Kitchen (2024), Kitchen Appliances (2023), and Roof (2021/2022).

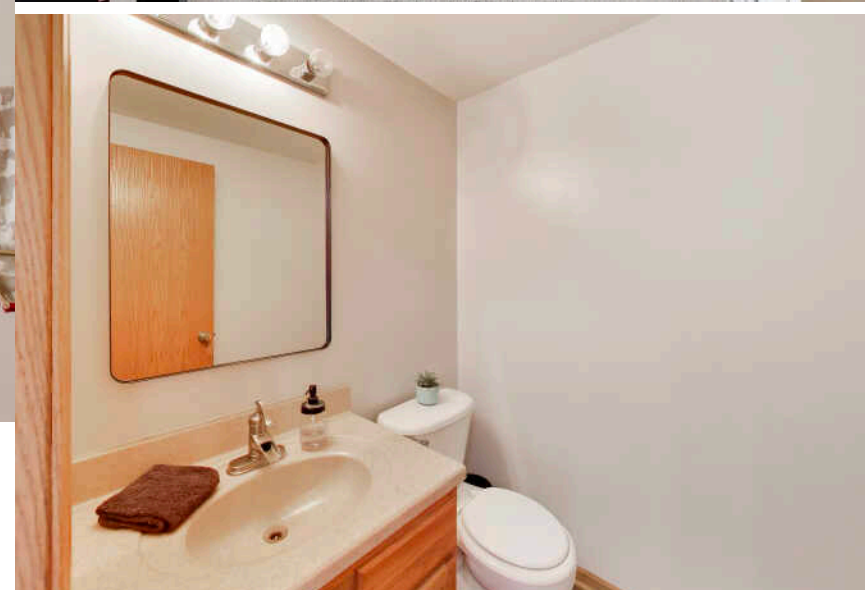
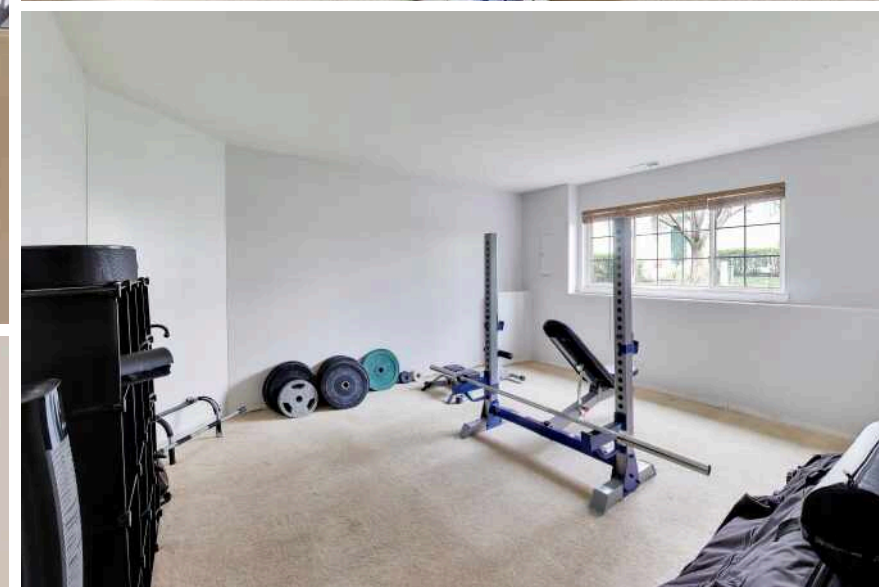
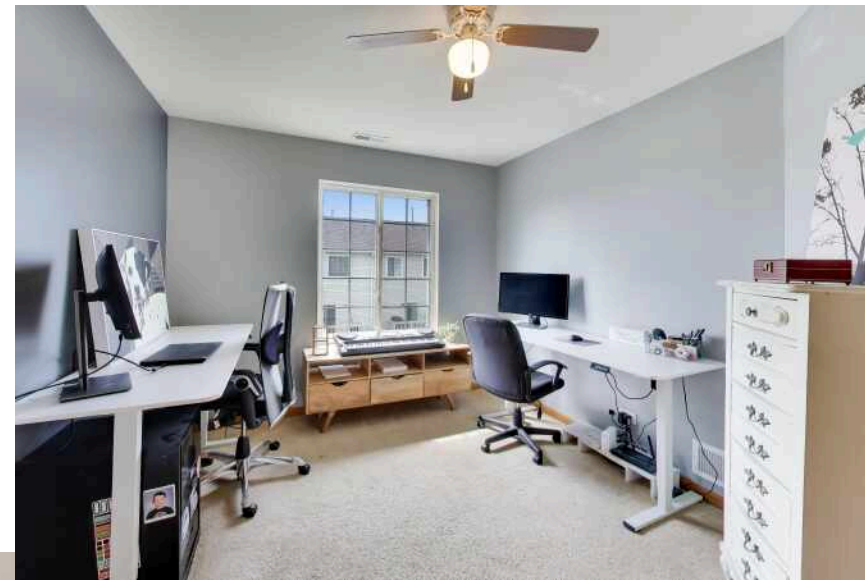
3 BEDROOM

1.1 BATH

TAXES: \$6,459

ASSESSMENTS: \$384 / MONTH







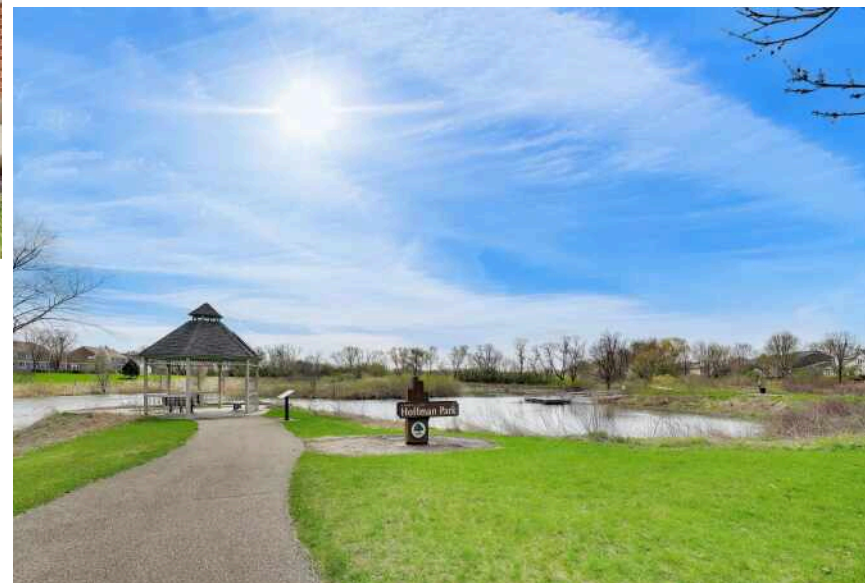
CARY IS A COMMUNITY ON THE MOVE.

Residents can bike, hike, canoe, kayak, cross country ski, skate, and golf at one of the village's three country clubs. There are also sports fields, playgrounds, parks, the Fox River, and popular Hollows Conservation Area.

A charming downtown, plentiful shopping, recreational areas, and a Metra station are just a few reasons why residents love this McHenry County village.

The Metra station is on the site of Cary's first railway station built in 1863. The railroad played a key role in Cary's evolution from a farming community to the suburb it is today. The railroad enabled farmers to sell their produce and pickles to Chicago and St. Louis buyers, expanding the local economy.

A range of housing is available including single-family homes, townhomes, and apartments.





LIZ TREVINO MARTINEZ

847.373.1594

LIZTM@ATPROPERTIES.COM



LIZ TREVINO MARTINEZ
REALTOR®

@properties® | CHRISTIE'S
INTERNATIONAL REAL ESTATE