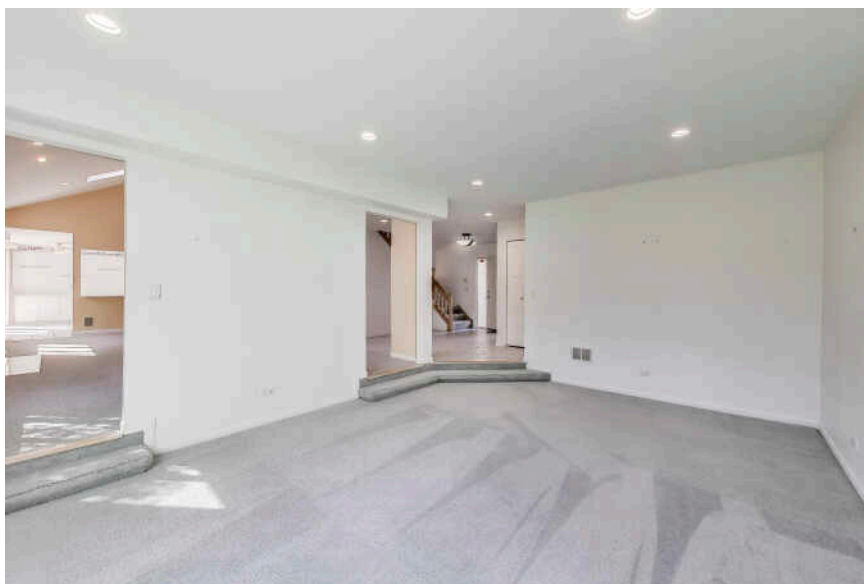
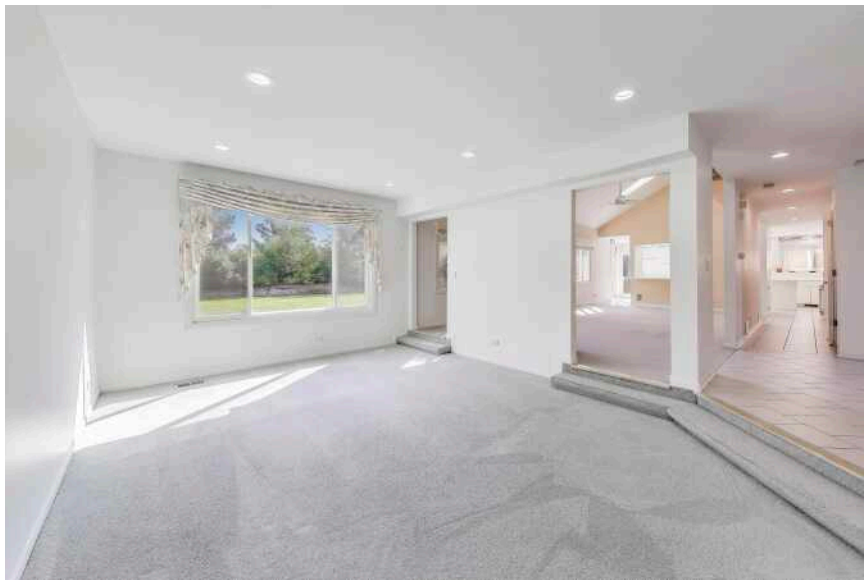
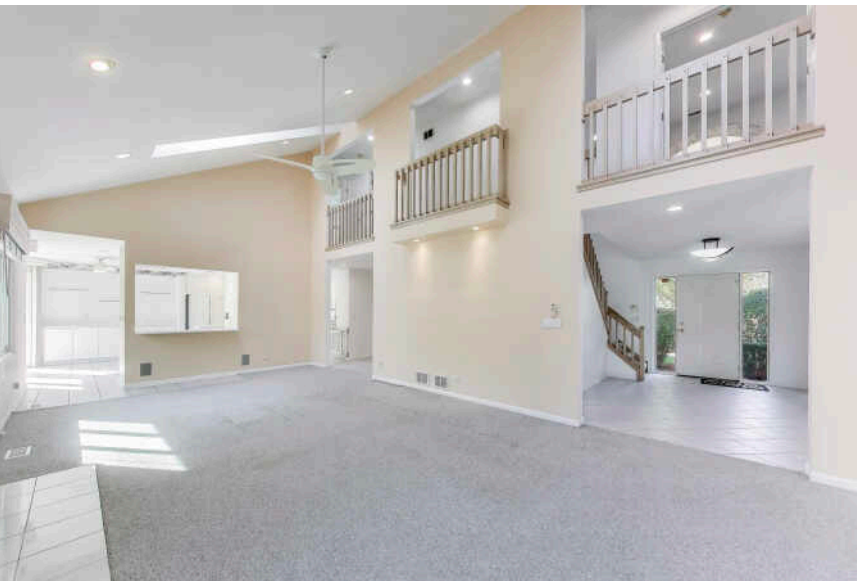


**1903 SHERIDAN ROAD**  
BUFFALO GROVE







## ROOM DIMENSIONS

FOYER : 14' × 9'

LIVING ROOM : 18' × 13'

DINING ROOM : 14' × 15'

FAMILY ROOM : 14' × 28'

KITCHEN : 13' × 14'

BREAKFAST ROOM : 14' × 11'

OFFICE : 13' × 11'

PRIMARY BEDROOM : 18' × 21'

SECOND BEDROOM : 11' × 12'

THIRD BEDROOM : 11' × 13'

FOURTH BEDROOM : 11' × 12'

FIFTH BEDROOM : 15' × 9'

SIXTH BEDROOM : 14' × 11'

LAUNDRY ROOM : 15' × 6'

RECREATION ROOM : 22' × 12'

GAME ROOM : 15' × 11'

WORK ROOM : 15' × 15'

STORAGE : 17' × 13'

**6 BEDROOM**

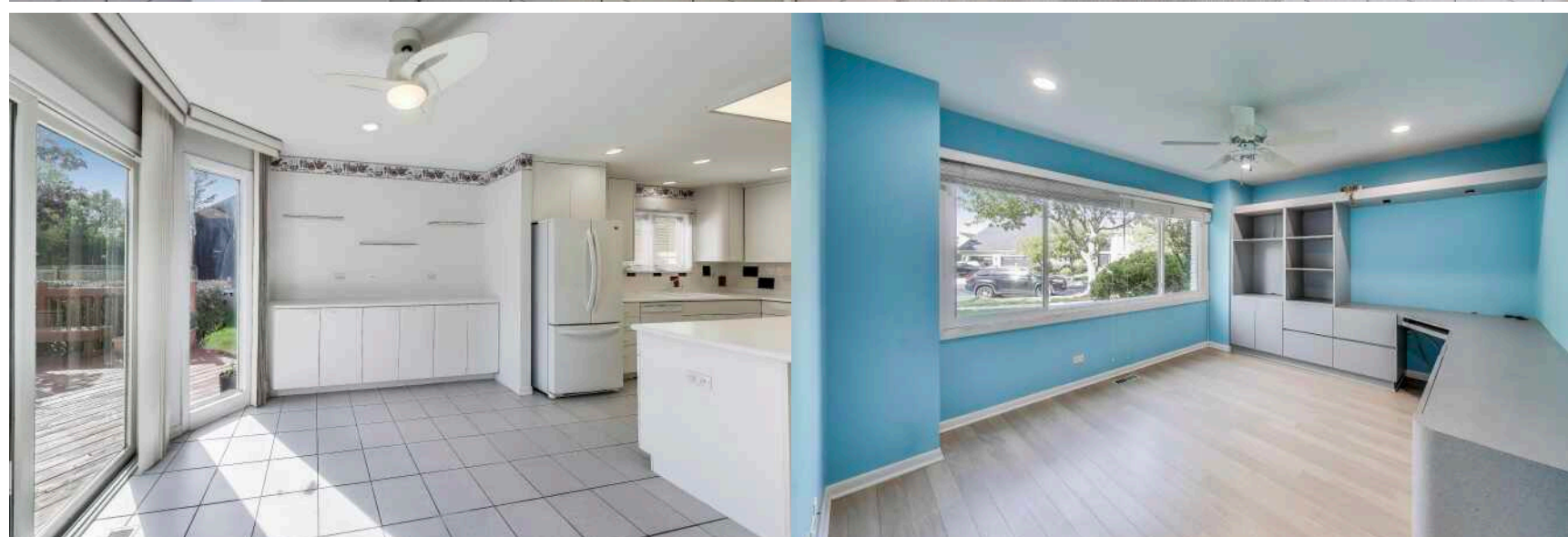
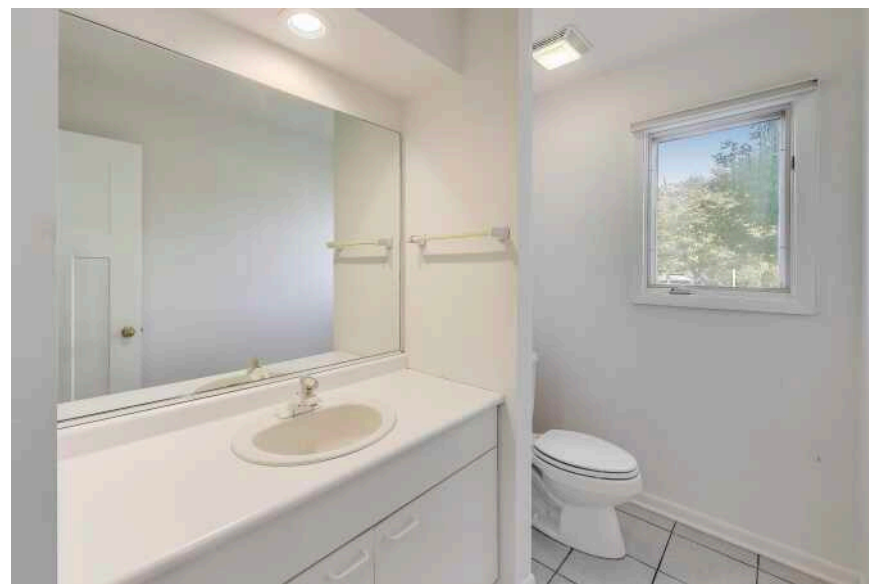
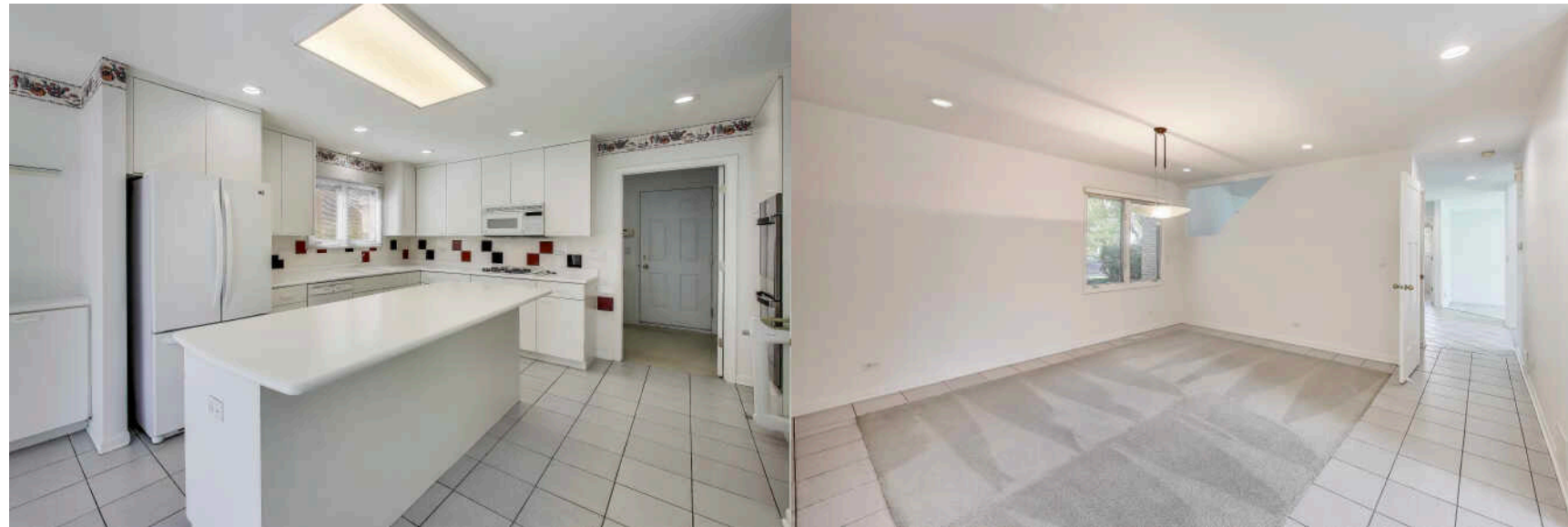
**3.1 BATH**

**TAXES: \$20,280**

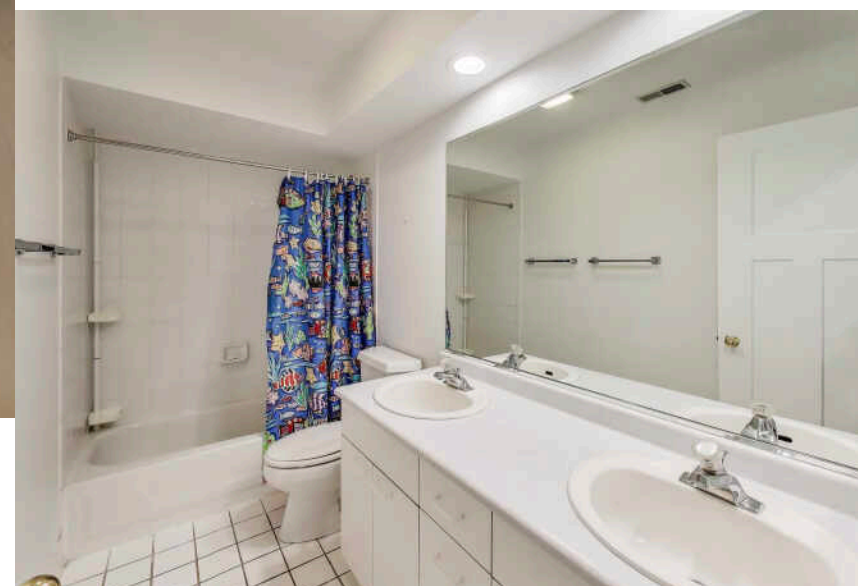
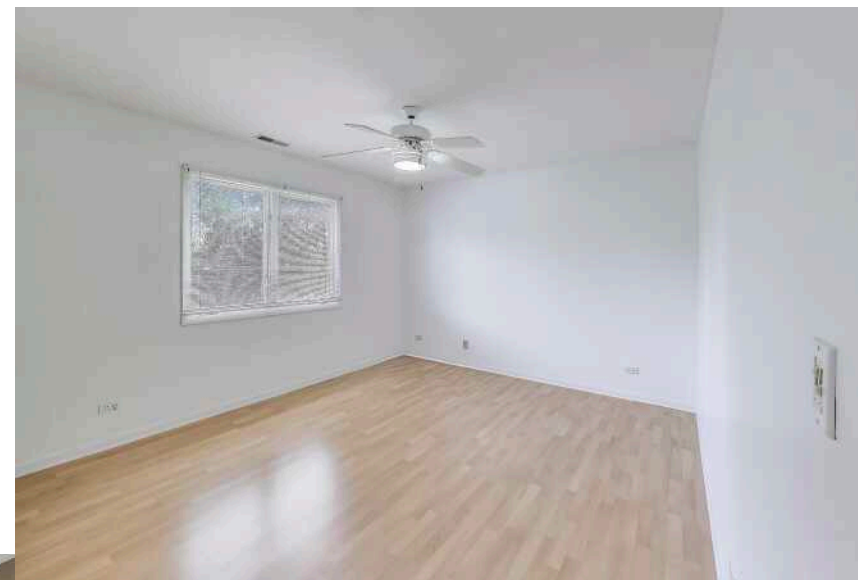
## PROPERTY INFORMATION & DETAILS

Situated in the Stevenson High School district and boasting over 4,000 sqft of beautifully designed living space, this impressive 6-bedroom residence is perfect for anyone seeking comfort, style, and convenience. As you step into the inviting foyer, you'll immediately notice the first-floor office featuring custom built-ins, ideal for anyone working from home or needing a quiet study space. The spacious vaulted family room offers an open concept layout that floods the area with natural light, thanks to its abundance of windows. The heart of the home is the white kitchen, equipped with ample counter space, a generous island, and room for an eat-in kitchen table - perfect for gatherings. From here, slide open the doors to reveal a massive deck overlooking an expansive backyard, making it an entertainer's paradise. For those more formal occasions, the separate dining room provides an elegant setting, while the additional living room on the main level offers even more versatile space for relaxation or entertaining guests. A convenient main-level mudroom/drop zone enhances functionality, seamlessly connecting to the three-car garage. Ascending to the second floor, you'll discover the primary suite, complete with space for a private sitting area and a custom-organized walk-in closet. The ensuite bathroom provides a double vanity, separate shower, and a soaking tub - your personal retreat after a long day. Three additional generously-sized bedrooms and a full bathroom complete this level, offering plenty of space for family and guests. The fully finished basement expands your living area, featuring a spacious recreation room with a wet bar - perfect for game nights or movie marathons. You'll also find two additional bedrooms, along with a versatile office/game room/music room and another full bathroom ('19). Whether it's for crafts or hobbies, the built-ins provide a perfect nook for all your creative endeavors, and don't miss the large walk-in storage room for all your organizational needs. This home has been meticulously updated, including a new roof ('22), new windows ('24), and updated furnace and A/C units ('16) ensuring peace of mind for years to come. Don't miss the chance to make this exceptional property your own.

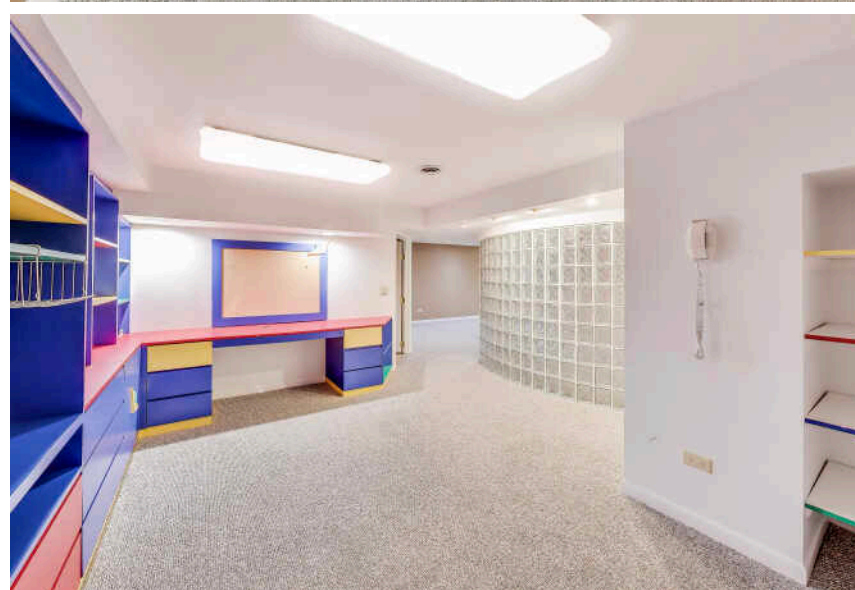
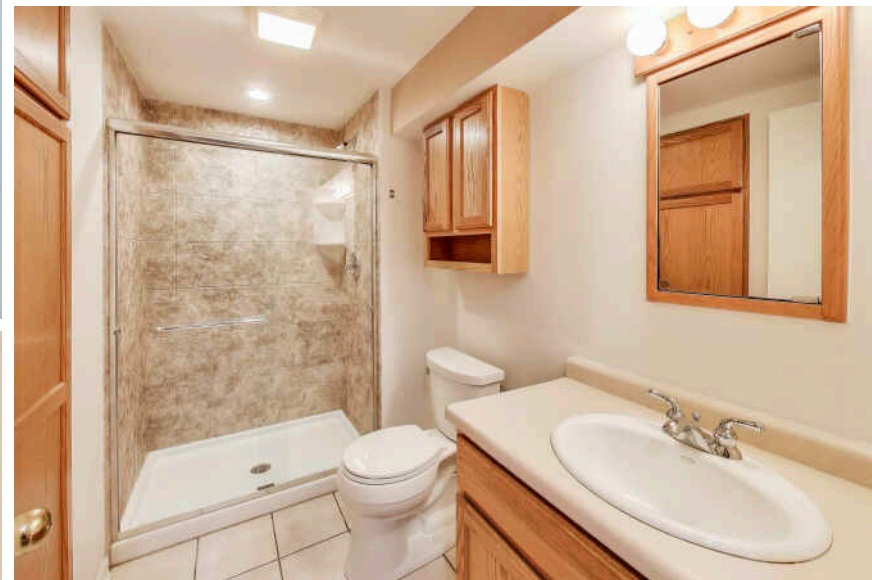
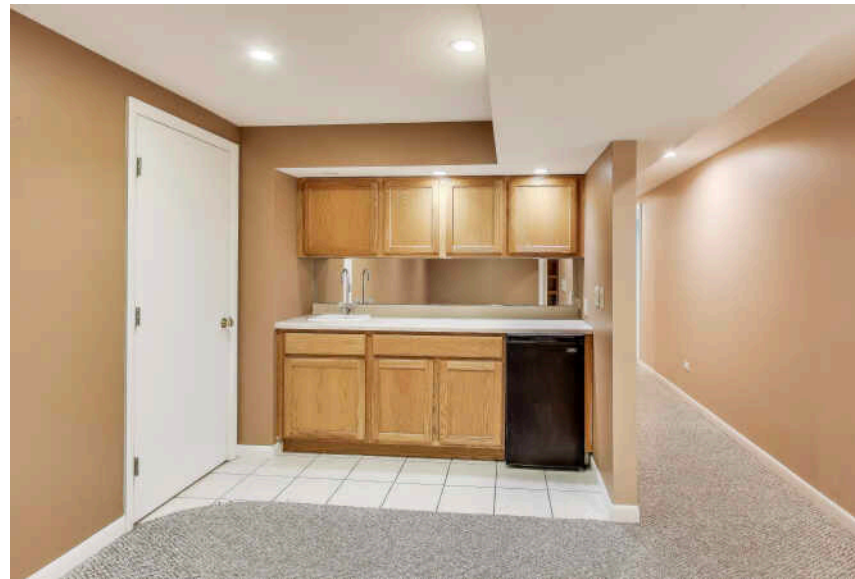
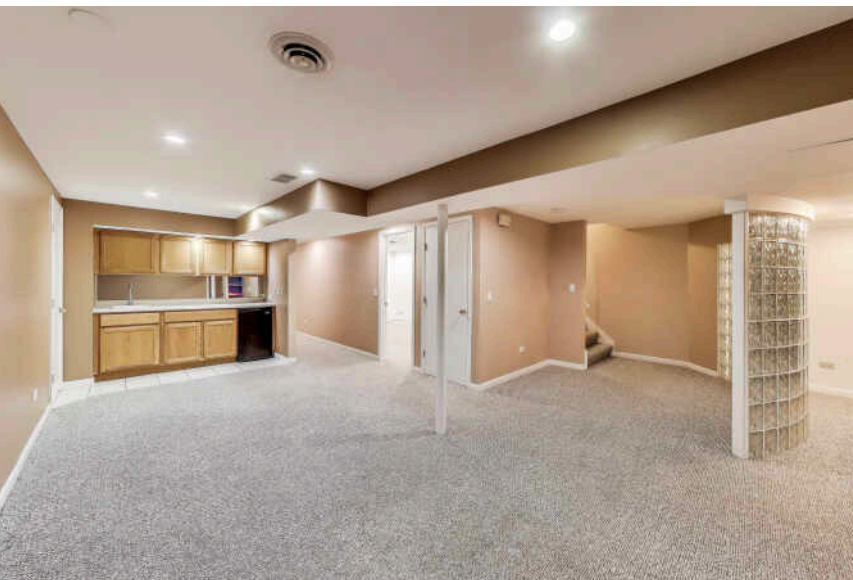








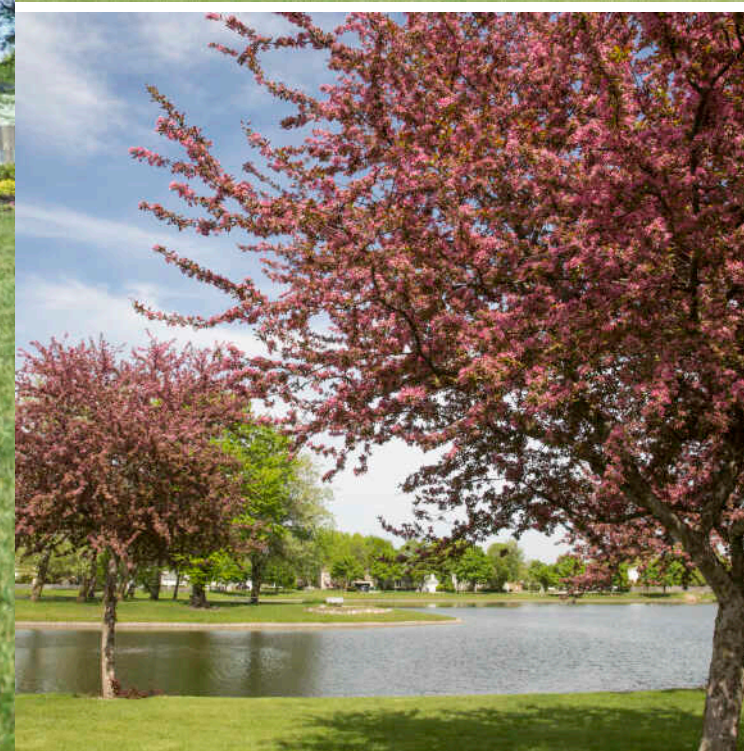












RECOGNIZED BY *MONEY* MAGAZINE AS ONE OF THE BEST PLACES TO LIVE IN THE U.S., **BUFFALO GROVE** IS HOME TO RESIDENTS WHO ENJOY COMMUNITY PARKS, GOLF COURSES, LAKES, POOLS, AND TENNIS COURTS.

A few favorite attractions include Long Grove Confectionary and the Raupp Memorial Museum, which chronicles the community's history. In addition to an annual farmers market, the village hosts two popular festivals every summer – a fine arts festival and Buffalo Grove Days, featuring carnival rides, craft booths, and live music.

Homes include a range of styles and prices – from new construction to well-maintained homes dating back to the 1950s. Neighborhoods include subdivisions with parks, sidewalks, and plenty of activities.

Commuting or visiting downtown is easy with the village's train station on Metra's North Central Line.









## AMY DIAMOND

847.497.0230

AMY@DEALWITHDIAMOND.COM

DEALWITHDIAMOND.COM



All specifications, features, designs, price, assessments, taxes and materials are subject to change without notice. Depicted floor plans and architectural renderings are only an artist's impression.

