

1917 GREENWOOD AVENUE
WILMETTE



@properties®

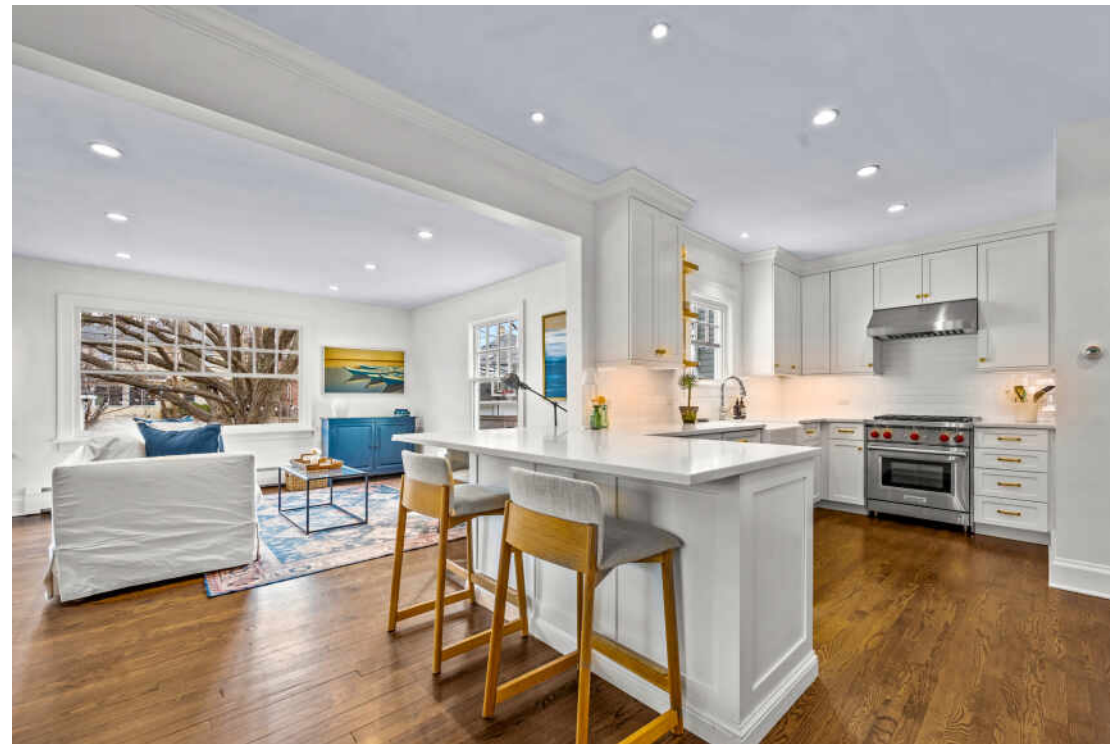
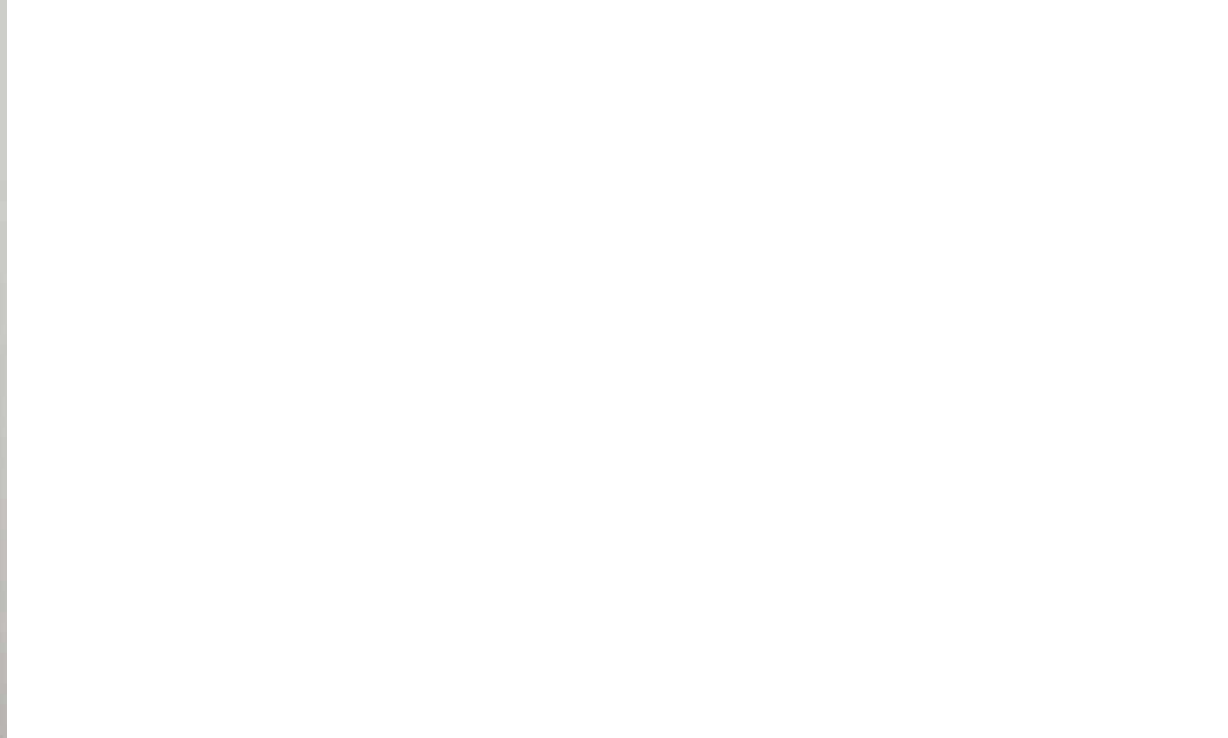
CHRISTIE'S
INTERNATIONAL REAL ESTATE



3 BEDROOM
1.1 BATH

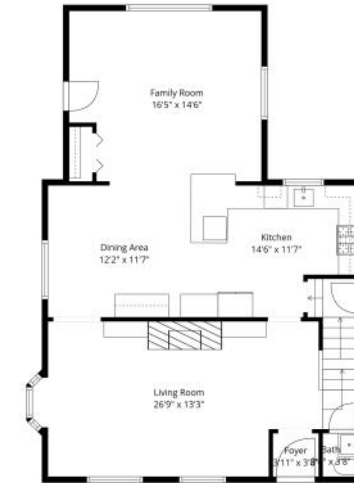
IMPROVEMENTS BY CURRENT OWNERS

- Marvin Windows & Window Treatments (2024-2026)
- Doors & Hardware (2024)
- HVAC System (2022)
- Fireplace Restoration (2021) - Capital Chimney Corp.
- Laundry Appliances (2025)
- Bathroom Ventilation (2025)
- Garage door opener replaced by Raynor Door Company (2021)
- South and west fencing with two gates installed by Durabilt Fence (2022)
- East fence installed by neighboring property (2021)
- Backyard Sod (2026)



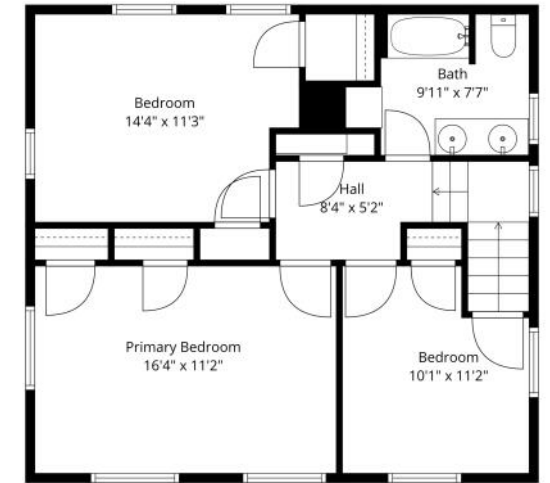






TOTAL: 1718 sq. ft.
 Basement: 122 sq. ft, 1st floor: 905 sq. ft, 2nd floor: 662 sq. ft, 3rd floor: 29 sq. ft
 EXCLUDED AREAS: RECREATION ROOM: 295 sq. ft, UTILITY: 42 sq. ft, LAUNDRY: 167 sq. ft,
 BAY WINDOW: 6 sq. ft, LOW CEILING: 85 sq. ft, UNFINISHED: 195 sq. ft,
 WALLS: 211 sq. ft.

Plan Created by Cadence App. Measurements Derived by Mobile App Not Guaranteed.



TOTAL: 1718 sq. ft.
 Basement: 122 sq. ft, 1st floor: 905 sq. ft, 2nd floor: 662 sq. ft, 3rd floor: 29 sq. ft
 EXCLUDED AREAS: RECREATION ROOM: 295 sq. ft, UTILITY: 42 sq. ft, LAUNDRY: 167 sq. ft,
 BAY WINDOW: 6 sq. ft, LOW CEILING: 85 sq. ft, UNFINISHED: 195 sq. ft,
 WALLS: 211 sq. ft.

Plan Created by Cadence App. Measurements Derived by Mobile App Not Guaranteed.

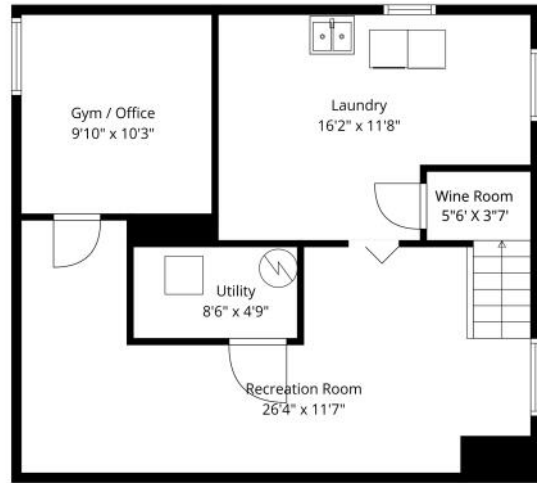


RANKED BY *CHICAGO* MAGAZINE AS ONE OF THE CHICAGO AREA'S BEST PLACES TO LIVE, **WILMETTE** IS A VIBRANT TOWN WITH A WEALTH OF AMENITIES.

When it comes to housing, there's no shortage of architectural styles and price points in this lakefront community. Quintessential Cape Cod, Victorian, and Colonial homes line the village's historic streets, many of which are paved with clay-fired bricks from the 1800s. In addition to single-family homes, there are beachfront condominiums and townhomes. While well-kept homes maintain Wilmette's rich architectural history in all of its glory, new construction attests to the village's enduring popularity.

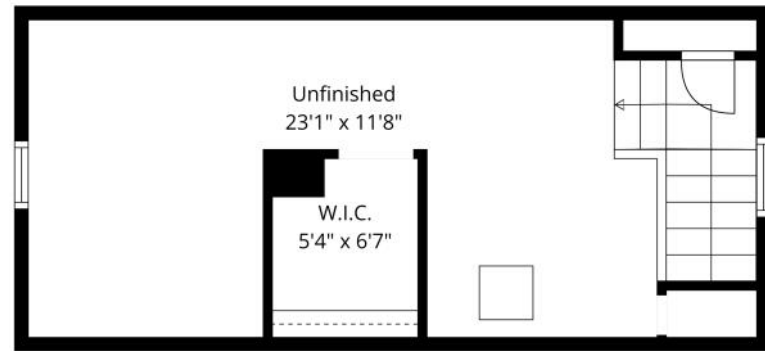
Residents also have access to nationally recognized New Trier High School, located in Winnetka.

Wilmette's Metra station and access to I-94 make commuting to downtown Chicago a breeze, but there's plenty of reasons to stay local. At the heart of town is the Village Center, where you'll find specialty stores, restaurants, and the Wilmette Theatre. Along Sheridan Road there is Plaza del Lago, providing more shops and services to locals. Meanwhile, ample recreational activities are available at Gillson Park and beach, Wilmette Harbor, and the Centennial Recreation Complex, which includes swimming, tennis, and ice skating.



TOTAL: 1718 sq. ft.
 Basement: 122 sq. ft, 1st floor: 955 sq. ft, 2nd floor: 662 sq. ft, 3rd floor: 29 sq. ft
 EXCLUDED AREAS: RECREATION ROOM: 295 sq. ft, UTILITY: 42 sq. ft, LAUNDRY: 167 sq. ft.
 BAY WINDOW: 6 sq. ft, LOW CEILING: 85 sq. ft, UNFINISHED: 195 sq. ft.
 WALLS: 211 sq. ft.

Floor Plan Created by Calcsuite App. Measurements Taken on Sight by Mobile App Not Guaranteed.



TOTAL: 1718 sq. ft.
 Basement: 122 sq. ft, 1st floor: 955 sq. ft, 2nd floor: 662 sq. ft, 3rd floor: 29 sq. ft
 EXCLUDED AREAS: RECREATION ROOM: 295 sq. ft, UTILITY: 42 sq. ft, LAUNDRY: 167 sq. ft.
 BAY WINDOW: 6 sq. ft, LOW CEILING: 85 sq. ft, UNFINISHED: 195 sq. ft.
 WALLS: 211 sq. ft.

Floor Plan Created by Calcsuite App. Measurements Taken on Sight by Mobile App Not Guaranteed.

NOTES _____



BONNIE TRIPTON

(773) 896-5628

847-881-0200

BONNIE@ATPROPERTIES.COM

WWW.BONNIETRIPTON.COM

