

1919 W CRYSTAL STREET #104
WICKER PARK

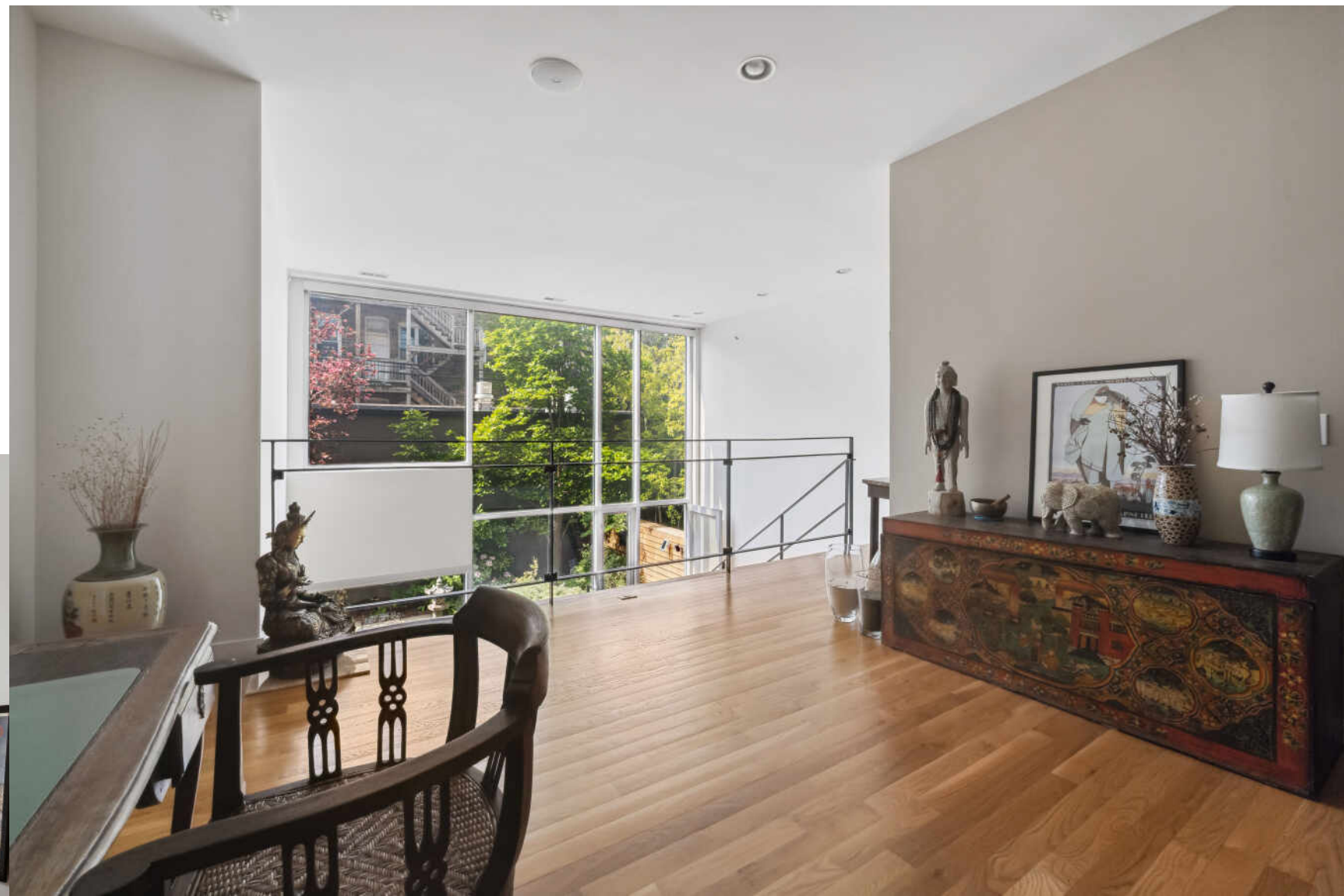
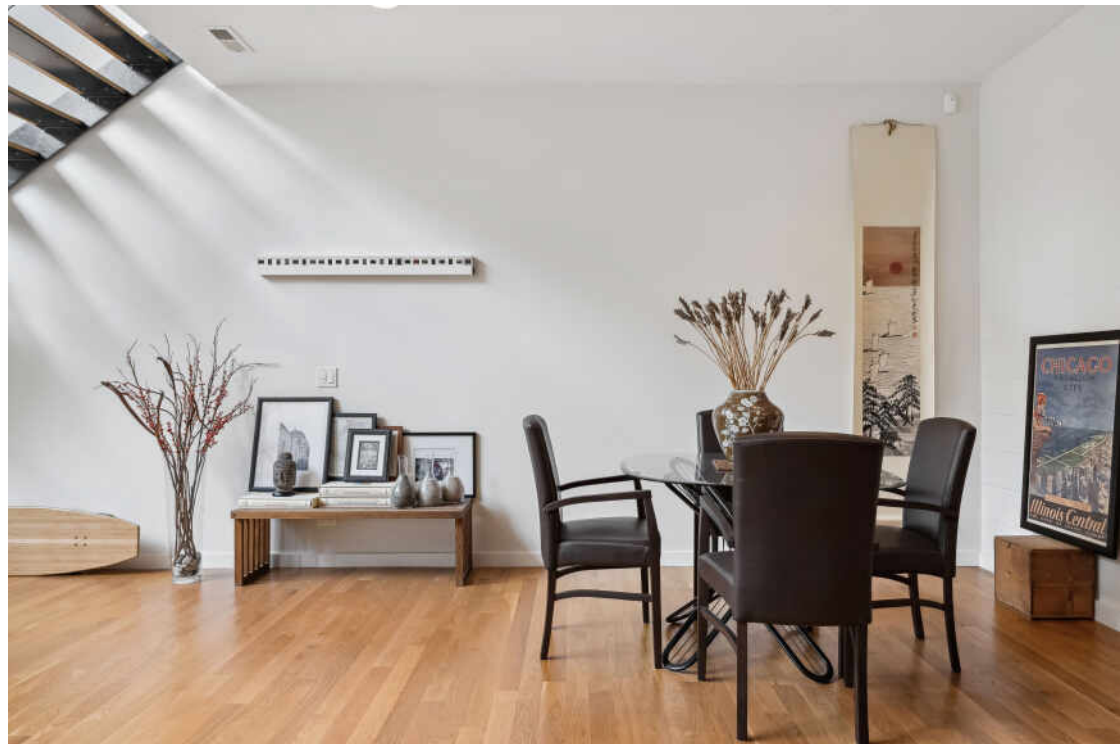


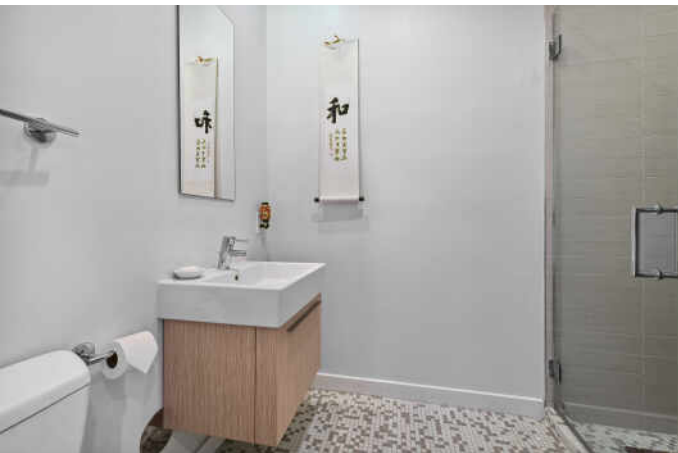
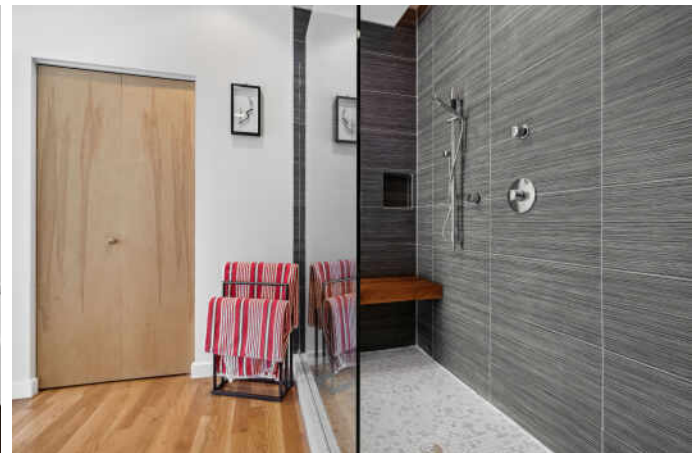
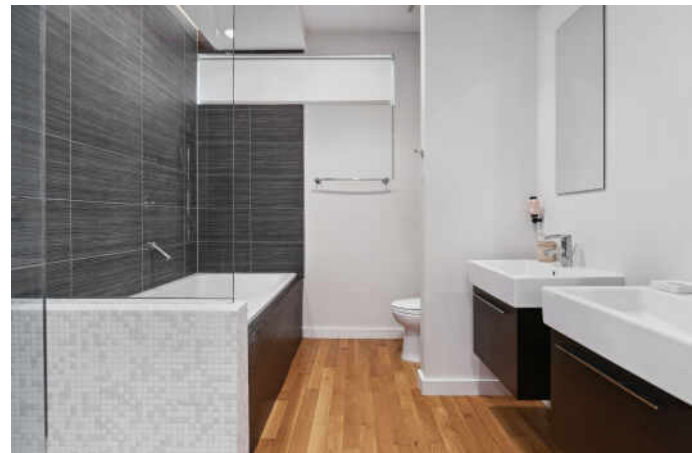


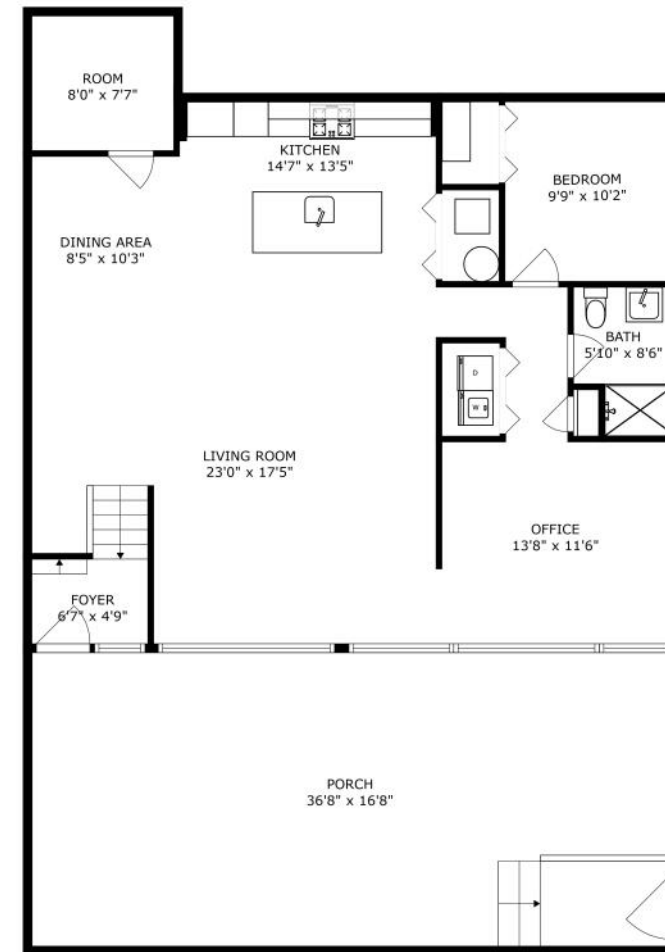
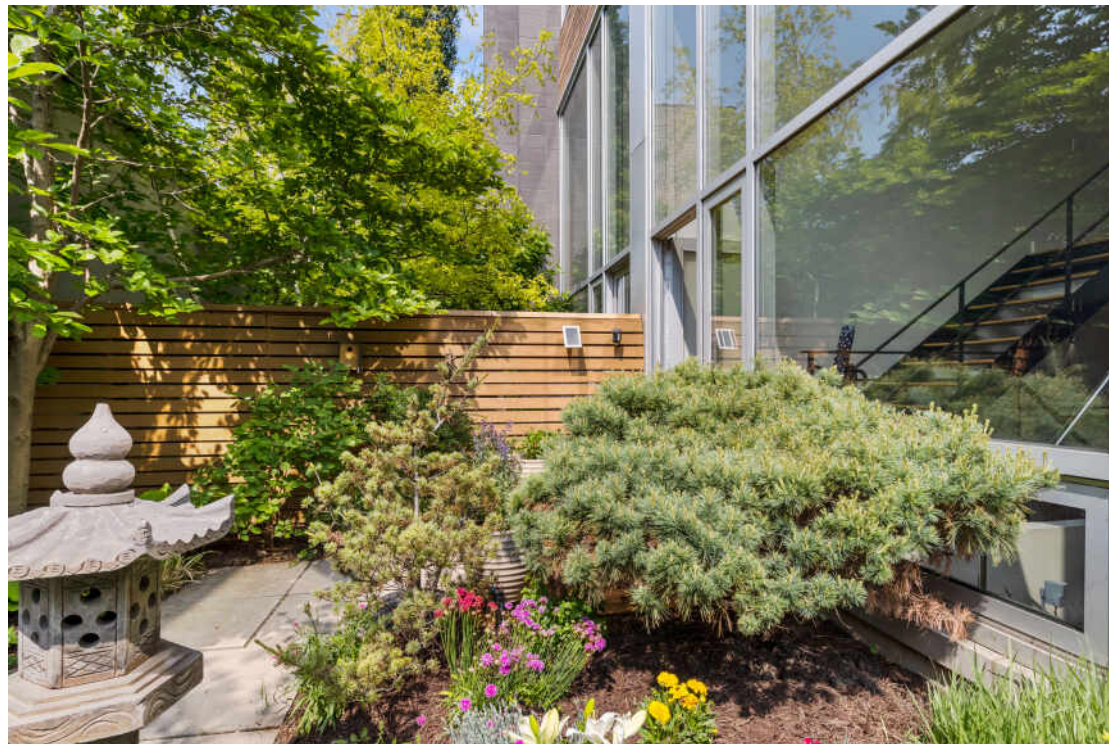
LOCATION&DESIGN

This unit designed by Award winning Architects Studio Dwell offers amazing space and light! An urban oasis with dramatic 20 ft ceilings, a floating staircase and floor to ceiling windows letting the outside be connected to life inside on both levels! Large primary suite on the top floor, a pretty loft space connects to the below. The main floor has an open concept, a stunning kitchen with arclinea cabinets, miele appliances and quartz countertops. Large living room and a beautiful large 37x16 professionally landscaped private outdoor space. Unit is wired for surround sound throughout. and has automated blinds. This units 3rd bedroom is open to living room and used as an office today but can be made into an enclosed room again. Amazing area, close to train, highway, shopping and all the bars, coffee shops and stores of Wicker park. 1 car garage spot included in price.

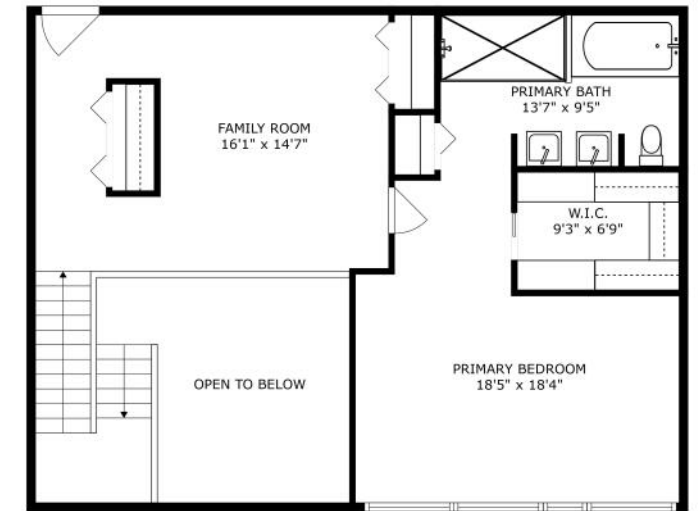






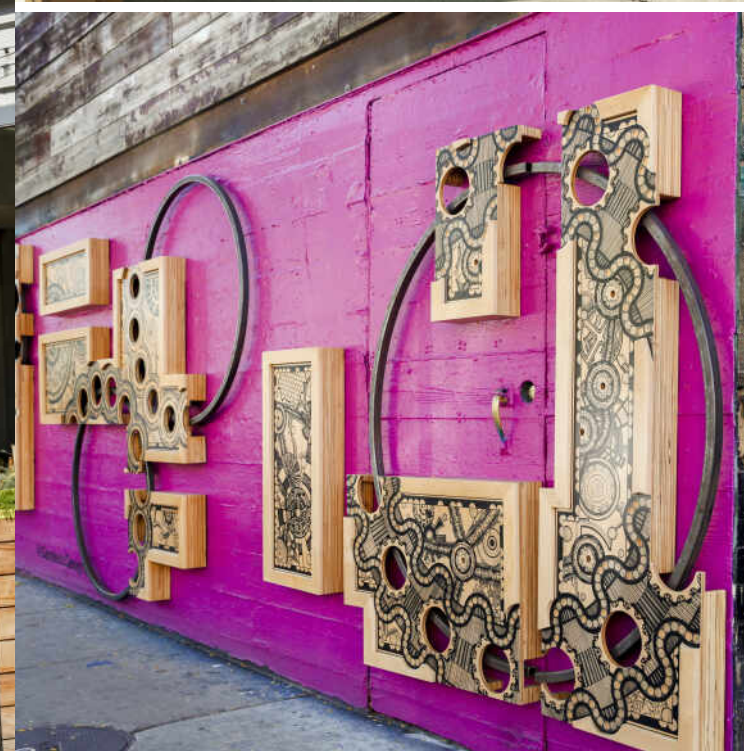
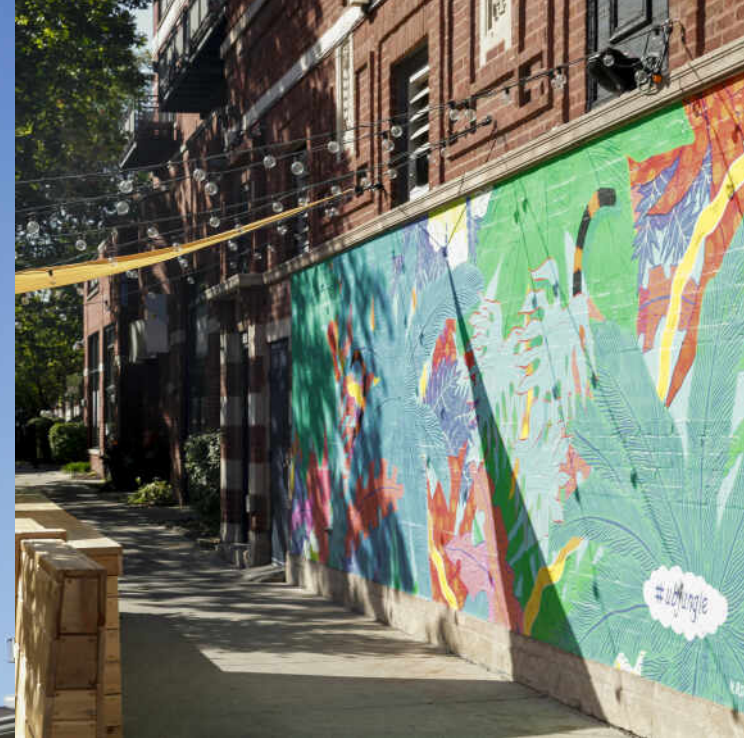


FLOOR 1



FLOOR 2

SIZES AND DIMENSIONS ARE APPROXIMATE, ACTUAL MAY VARY.



RESIDENTS AND BUSINESSES FLOCKED TO **WICKER PARK** TO REBUILD AFTER THE GREAT CHICAGO FIRE OF 1871. TODAY, CHICAGOANS FLOCK TO THE HIP, HAPPENING NEIGHBORHOOD FOR ITS EATERIES, ARTS AND ENTERTAINMENT.

Wicker Park boasts an eclectic assortment of cafes, independent stores, dive bars, upscale boutiques, art galleries and city parks including four-acre Wicker Park. The neighborhood is home to some of Chicago's most popular and acclaimed restaurants, elevating pizza and tacos to foodie fare and offering a wide variety of options for drinking and dining pleasure.

Located just south of Bucktown and northwest of The Loop, the neighborhood includes large historic 19th century brick and stone mansions and landmark Victorian homes on tree-lined streets. Modern new construction condominiums and single-family homes along with vintage walk-ups, three-flats and lofts round out the diversity of housing available.

Like neighboring Bucktown, Wicker Park's notable commercial architecture remains - re-imagined, redeveloped and restored. The iconic Flat Iron Arts Building, home to artists who moved to the neighborhood in the 1980s, still houses various art studios and local businesses today.

The CTA Blue Line offers convenient access to The Loop and O'Hare International Airport, while the Kennedy Expressway allows for an easy drive to surrounding neighborhoods and suburbs.

[illegible]



ANNIKA VALDISERRI

(312) 504-5020

ANNIKA@ATPROPERTIES.COM



CHRISTIE'S
INTERNATIONAL REAL ESTATE