

1919 W. SCHILLER STREET
WICKER PARK





ROOM DIMENSIONS

PRIMARY BEDROOM : 18' × 12'

SECOND BEDROOM : 14' × 10'

THIRD BEDROOM : 13' × 10'

DEN : 13' × 13'

LIVING ROOM : 18' × 12'

DINING ROOM : 14' × 12'

KITCHEN : 17' × 9'

BREAKFAST ROOM : 15' × 11'

LAUNDRY : 8' × 6'

PHENOMENAL OPPORTUNITY IN WICKER PARK

- Incredible opportunity to rehab a 2-story brick Victorian House in an amazing, heart of Wicker Park location right across the street from Wicker Park
- Great light, space and flow ready to be finished off by a new buyer
- Gorgeous vintage details throughout including hardwood floors, high ceilings, transoms and beautiful woodwork and trim
- Main floor features 10'4" ceiling height, large and open eat-in kitchen overlooking an extra deep backyard with brick paver patio and lattice fencing
- Living room offers bay windows overlooking Wicker Park
- Separate dining room, full bath with walk-in shower and a laundry room w/ side by side washer/dryer on main floor
- Partially finished 2nd floor features 9'9" ceiling height and a primary bedroom with large walk in closet and bay windows overlooking Wicker Park
- Framed for 2 more full baths upstairs
- Oversized 25' x 162' lot
- 2 car detached masonry garage

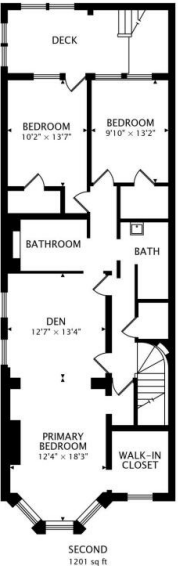
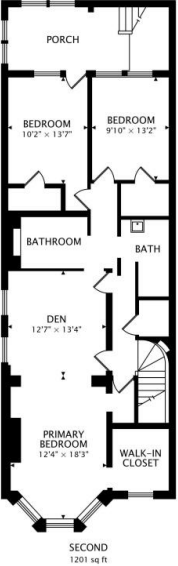
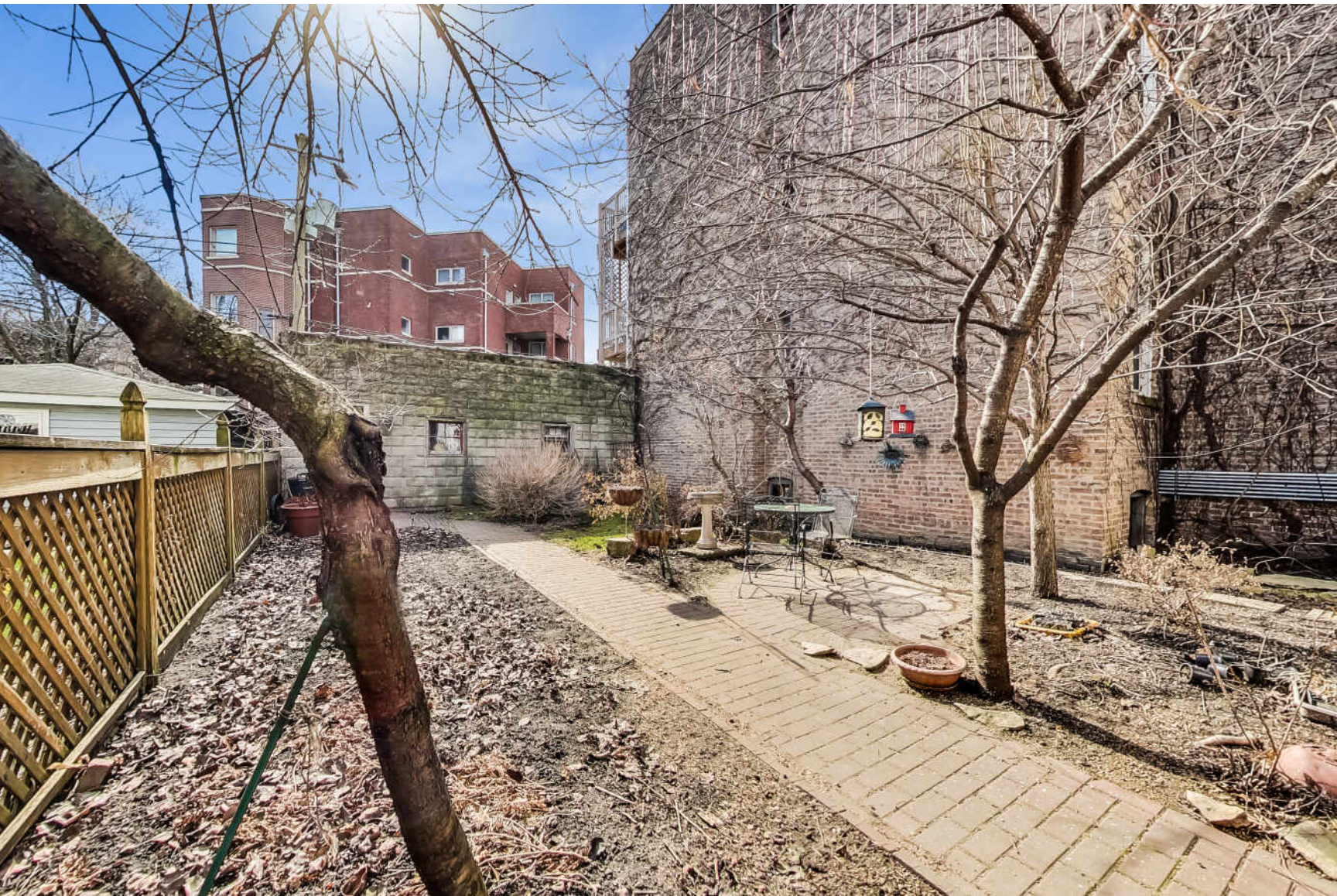














SCOTT STAVISH

(773) 879-4444

SCOTTSTAVISH@ATPROPERTIES.COM

SCOTTSTAVISH.COM

SCOTTSTAVISH



CHRISTIE'S
INTERNATIONAL REAL ESTATE

1919SCHILLER.INFO